



Canberra Hospital Expansion Project Update

August 2020



CONTENTS

| | |
|---|-----------|
| Minister's Message | 3 |
| Project Overview | 4 |
| Benefits to our community..... | 4 |
| Meeting Canberra's growing demand for healthcare services..... | 5 |
| What we've achieved to date..... | 6 |
| Multiplex announced as partner to deliver next stage of the Canberra Hospital Expansion | 7 |
| Other healthcare facility improvements across the hospital campus | 8 |
| Supporting a stronger, more highly skilled workforce | 11 |
| Continuing engagement | 12 |
| Patient-centred ways of working | 13 |
| Design consultation..... | 14 |
| A better-connected healthcare facility..... | 14 |
| Better community spaces | 16 |
| Reducing our carbon footprint | 16 |
| Meeting future demand for healthcare..... | 17 |
| Next steps..... | 18 |
| Get involved..... | 20 |



MESSAGE FROM THE ACT MINISTER FOR HEALTH



The ACT Government's investment in the Canberra Hospital Expansion will mean you have access to better healthcare when you need it most.

The need for high-quality healthcare facilities has never been more front of mind than during the COVID-19 pandemic. Delivering a bigger, better Canberra Hospital is a priority project for the ACT Government as we work to future-proof our public healthcare system to meet the needs of our growing city.

In a significant milestone for the project, I am pleased to announce the ACT Government will be partnering with experienced global constructor Multiplex to deliver the new emergency, surgical and critical healthcare facility as the centrepiece of the Canberra Hospital Expansion.

We have been preparing the hospital campus over the last 12 months for works on the new building to start in 2021. To date we have delivered a new administration building and progressed new teaching and research facilities, a new Child at Risk Health Unit, new library facilities and a new temporary staff carpark. These projects have already improved the healthcare experience for staff and patients at the hospital. With the new facility set to be completed in 2024, we will deliver a major boost to our region's healthcare capacity.

Work on the Canberra Hospital Expansion will support hundreds of construction jobs over the next four years, contributing significantly to the Canberra economy and supporting Canberrans through the post COVID-19 recovery period. The new facility will also attract more nurses and doctors to the Canberra region, further enhancing the ACT's healthcare system.

The ACT Government remains committed to supporting Canberrans in building a better, modern, fit-for-purpose health facility for patients, carers and their families and for the staff who care for them.

I look forward to seeing this exciting project take shape.

Rachel Stephen-Smith, MLA
Minister for Health





PROJECT OVERVIEW

The ACT Government is investing in bigger, better, health infrastructure for Canberrans.

Canberra Hospital is expanding to include new emergency facilities, with more operating rooms, more treatment spaces and more intensive care beds. It is the biggest investment in ACT health facilities since the formation of self government.

The new emergency, surgical and critical care facility will be an integrated building at the heart of the hospital campus and be a significant element of the Canberra Hospital Masterplan.

BENEFITS TO OUR COMMUNITY

The Canberra Hospital Expansion is caring for our growing community.

In growing Canberra's healthcare system, the Canberra Hospital Expansion will deliver significant benefits through better access to health services and support jobs for Canberrans now and into the future.

The Canberra Hospital Expansion will:



Create hundreds of construction jobs.



Provide spaces for patients, carers and staff for respite, learning and meetings.



Build more operating rooms, more treatment spaces and more intensive care beds.



Reduce the new facility's carbon footprint by being 100% electric.

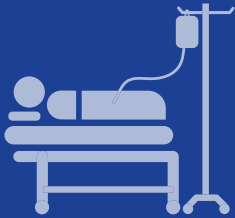


Improve access to the emergency department.



Attract clinicians to train and stay in Canberra in the long term.

MEETING CANBERRA'S GROWING DEMAND FOR HEALTHCARE SERVICES



148

IN-PATIENT BEDS



**RADIOLOGY
& MEDICAL
IMAGING**

55
DAY
SURGERY
BEDS

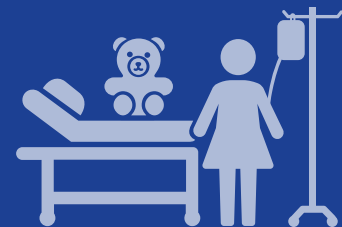


**RELOCATION
OF THE
HELIPAD**

IMPROVING ACCESS TO THE
EMERGENCY DEPARTMENT



**FAMILY-CENTRED CARE
CLOSE TO LOVED ONES**

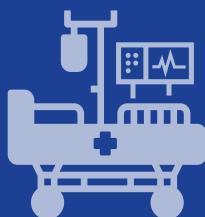


INCLUDING
4 PAEDIATRIC
ICU BEDS

DOUBLE THE EXISTING
ICU TREATMENT SPACES
FROM 30 TO 60



39



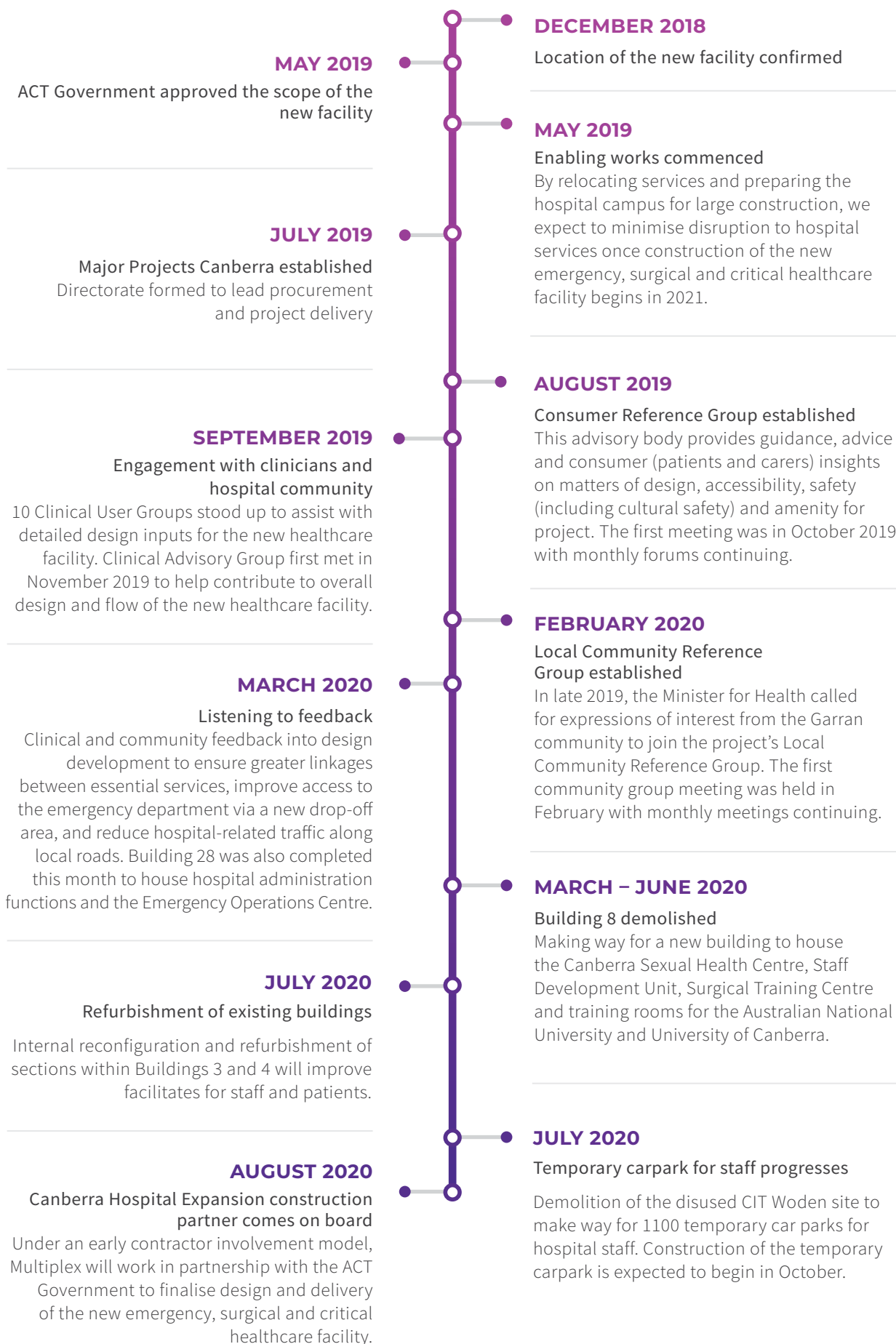
ADDITIONAL
EMERGENCY DEPARTMENT
TREATMENT SPACES

22

OPERATING
THEATRES
IMPROVING
ACCESS TO
SURGERY



WHAT WE'VE ACHIEVED TO DATE





MULTIPLEX ANNOUNCED AS PARTNER TO DELIVER NEXT STAGE OF THE CANBERRA HOSPITAL EXPANSION

Multiplex has been announced as the ACT Government's construction partner for the new emergency, surgical and critical healthcare facility as part of the Canberra Hospital Expansion.

Construction of the new facility is scheduled to commence in 2021, with detailed planning and design now underway.

"Our team is ready to deliver a world-class hospital facility for Canberra which responds to the needs of an ever-changing world. We care about Canberra, its people, its hospital and its future and look forward to working with the ACT Government over the coming years to see this project successfully delivered," said David Ghannoum, Multiplex Regional Managing Director.

Multiplex is highly experienced in the delivery of other successful hospital projects, such as Sydney's Westmead Hospital and the University of Canberra Public Hospital.

We care about Canberra, its people, its hospital and its future and look forward to working with the ACT Government over the coming years to see this project successfully delivered.

– David Ghannoum
Multiplex Regional
Managing Director

"Having delivered the University of Canberra Hospital in 2017 we are looking forward to reconnecting with the community, and will be implementing specific initiatives to support local employment, safety training and the environment," said Mr Ghannoum.

The project is being procured under an Early Contractor Involvement (ECI) model, which involves the contractor early during the detailed planning and

design phase of the project. This model allows our partner to work collaboratively with the ACT Government and community to finalise the design of the new building over the coming months. This will ensure the project delivers the best possible outcome for clinicians, patients and the wider Canberra community.

REFURBISHMENT OF EXISTING BUILDINGS

BUILDING 3

SHAPE Australia (Pty Ltd.) is scheduled to begin construction in August on the transformation of a space for the Child at Risk Health Unit, which provides a critical service to vulnerable youth in the Canberra region. The Child at Risk Health Unit will benefit from new accommodation with more space, providing an optimal environment for care. A play area will also be built within the Building 3 internal courtyard.

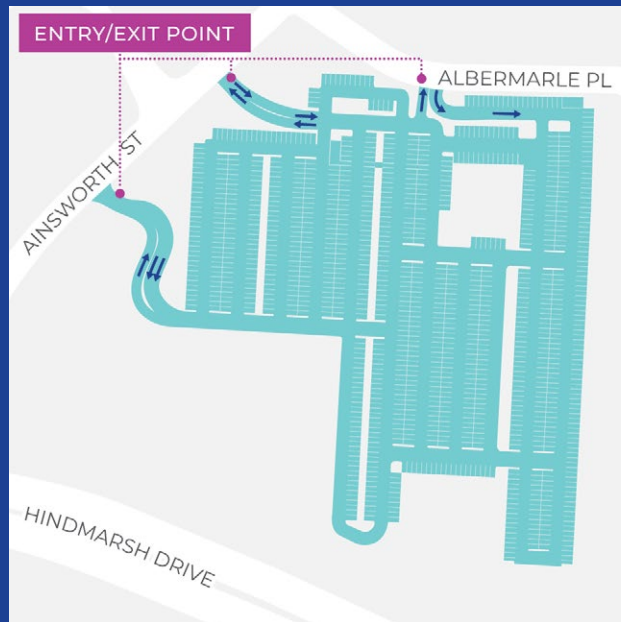
BUILDING 4

Internal reconfiguration works began in July and will continue for the duration of 2020. These upgrades will include a refurbished library area, digitisation of library resources, modern teaching and training spaces for ANU and updated ICT infrastructure.

PROVIDING MORE PARKING

CONSTRUCTION OF A TEMPORARY CARPARK

More parking for staff is on track with demolition nearing completion of the former CIT Woden campus, adjacent to the hospital campus off Hindmarsh Drive. A tender has been issued to market for contractors to build a temporary staff carpark at the site, with applications closing 18 August. The new temporary carpark will provide capacity for more than 1100 staff vehicles, freeing up public parking on the hospital campus. It will help to alleviate parking and traffic pressures within the Canberra Hospital campus during construction. Construction of the temporary carpark is expected to begin in October and is scheduled for completion in early 2021.



Minister Stephen-Smith inspects demolition progress at the former CIT Woden campus and announces more temporary parking for Canberra Hospital staff, July 2020.



NEW FACILITY FOR CANBERRA SEXUAL HEALTH CENTRE, RESEARCH AND TRAINING

Construction of the new Building 8 is scheduled to begin in September for a new four-storey building, with local company SHAPE Australia (Pty Ltd.) selected to deliver the work. This project is expected to support more than 100 jobs during construction and is part of a significant investment by the ACT Government for bigger, better, health infrastructure for Canberrans.

Anticipated to be completed in the first half of 2021, the new Building 8 will house the Canberra Sexual Health Centre, Staff Development Unit, Surgical Training Centre and hospital administration functions. It will also include training and teaching rooms for the University of Canberra and Australian National University.

SHAPE Australia (Pty Ltd.) has a strong track record of delivering complex projects on the Canberra Hospital campus. The company are currently partnering on the transformation of a new space for the Child at Risk

Health Unit and redeveloping two existing critical care inpatient units. They have previously worked with ACT Health on expanding and refurbishing the existing emergency department with minimal impact to the hospital's daily activities. The company also completed Building 28 in March 2020 which houses administration functions and the Emergency Operations Centre, as well as Building 15 works which provided additional clinical spaces for a more efficient outpatient facility.

Water, fire and gas services are currently being relocated underground along Hospital Road to prepare this site for construction, which has required the partial closure of Hospital Road.

The project team will continue to work with all stakeholders to ensure clinical, community, public transport, emergency services and all other needs are considered regarding Hospital Road access during Building 8 construction works.





SUPPORTING A STRONGER, MORE HIGHLY SKILLED WORKFORCE

The Canberra Hospital Expansion is set to support hundreds of local construction jobs and upskilling opportunities for apprentices.

Construction of the new emergency, surgical and critical healthcare facility will create about 500 jobs for Canberrans and support our city's response to COVID-19 economic recovery.

There will also be opportunities for about 150 local trainees and apprentices to support upskilling of our local workforce, as well as targeted investment with Aboriginal and Torres Strait Islander contractors and businesses.

Employment opportunities for locals interested in working on the project will also be available via the ACT

Government and Multiplex joint 'Connectivity Centre' initiative, which will link job seekers with prospective employers.

Construction of the new Building 8, set to commence works in September, is also expected to support more than 100 jobs. Building 8 will house the Canberra Sexual Health Centre, Staff Development Unit, Surgical Training Centre and hospital administration functions. It will also include training and teaching rooms for the University of Canberra and Australian National University.

SUPPORTING MORE THAN
600 CONSTRUCTION JOBS
FOR CANBERRANS OVER
THE LIFE OF THE PROJECT



CONTINUING ENGAGEMENT

The project team continues to work with stakeholders to understand what is needed to deliver the best quality care through the Canberra Hospital Expansion, with regular monthly meetings of the Consumer Reference Group, Local Community Reference Group and Clinical Advisory Group.

Most forums are now being hosted online due to COVID-19 restrictions, but continue to be an integral part of the consultation process.

The team has received important clinical and community feedback which has fed into plans for the new facility. Updated designs will now ensure greater linkages between essential services, improve access to the emergency department via a new drop-off area, and reduce hospital-related traffic along local roads.

This consultation is contributing to a facility that is fit-for-purpose and complements the community it operates in.

A transport working group, comprising consumers and community members, will also look at shuttle, taxi and bus access at the hospital, including transport links between the hospital and Woden town centre. Access to taxis and buses will be critical in ensuring the hospital remains an accessible healthcare hub for the Canberra community.

CANBERRA HOSPITAL EXPANSION STAKEHOLDERS

CANBERRA HEALTH SERVICE

- Clinicians
- Administrative staff
- Clinical support staff
- ACT Emergency Services

CONSUMERS AND COMMUNITY

- Patients, carers and families
- Local residents
- Garran Primary School families and staff
- Carer organisations

HEALTH INDUSTRY

- ANU Medical School
- External suppliers and contractors
- External health providers
- Non-Government Organisations
- Professional associations

REFERENCE GROUPS

- Consumer Reference Group
- Transport User Group
- Clinical Advisory Group
- Clinical User Groups (10)
- Local Community Reference Group

GOVERNMENT

- Commonwealth Department of Health
- Australian Commission on Safety and Quality in Health Care
- NSW Department of Health

PROJECT OVERSIGHT

- ACT Government
- Minister for Health
- Project Governance
 - Project Board
 - Project Control Group



PATIENT-CENTRED WAYS OF WORKING

Intensive engagement with hospital staff, consumer and carer representatives is underway to tailor care and service delivery models.

Models of care aim to ensure patients get the right care, at the right time, by the right team and in the right place, while service delivery models provide a framework for support services in the building, such as sterilising services and medical imaging.

Patient-centred care is widely recognised as a foundation to high-quality healthcare.

Understanding a patient’s perspective of a service is a fundamental component of patient-centred care. It is respectful and responsive care to the preferences, needs and values of the individual patient.

Core themes have been developed in consultation with the Consumer Reference Group to be guiding principles for the models of care, which will shape ways of working in the new emergency, surgical and critical healthcare facility.

CONSUMER CARE PRINCIPLES

| | |
|----------------------|---|
| Participation | Consumers (and where appropriate their family members and carers) will be equal partners within the multidisciplinary care team, enabling them to be actively involved in their own care. |
| Communication | Embedding frequent and meaningful communication with consumers, their family members and carers, about their care for their entire hospital journey, including discharge. |
| Experience | Care is delivered in a way that supports the consumers’ experience of safety and fosters trust. |
| Support | Recognising the importance of involving family and carers in the consumer’s care and recovery throughout their health journey. |

DESIGN CONSULTATION

With the announcement of the ACT Government's new construction partner, Multiplex will work closely with all established reference groups including the Clinical Advisory Group, Consumer Reference Group and Local Community Reference Group to continue incorporating their feedback into the building design. Multiplex will also continue the consultation and co-design process with other user groups from September.

The new emergency, surgical and critical healthcare building proposes to include spaces for carers and families as well as enhanced landscaping and several

courtyards, with the design for these areas to be developed in consultation with hospital users and the community.

The ACT Government and Multiplex will hold a series of open days, workshops and stakeholder engagement activities during 2021 so that the general public can gain an insight into the design of the hospital and continue to provide input.

All members of the public will also have another opportunity to have their say when the Development Application for the proposed facility is lodged in early 2021.

A BETTER-CONNECTED HEALTHCARE FACILITY

The project's collaborative design process is developing a facility with more clinical infrastructure, improved connectivity to other hospital services and attractive public spaces.

A significant design development following detailed consultation was the addition of a physical connection between the new facility and Building 2 across Hospital Road. This physical link will improve pedestrian access between essential services at the hospital campus.

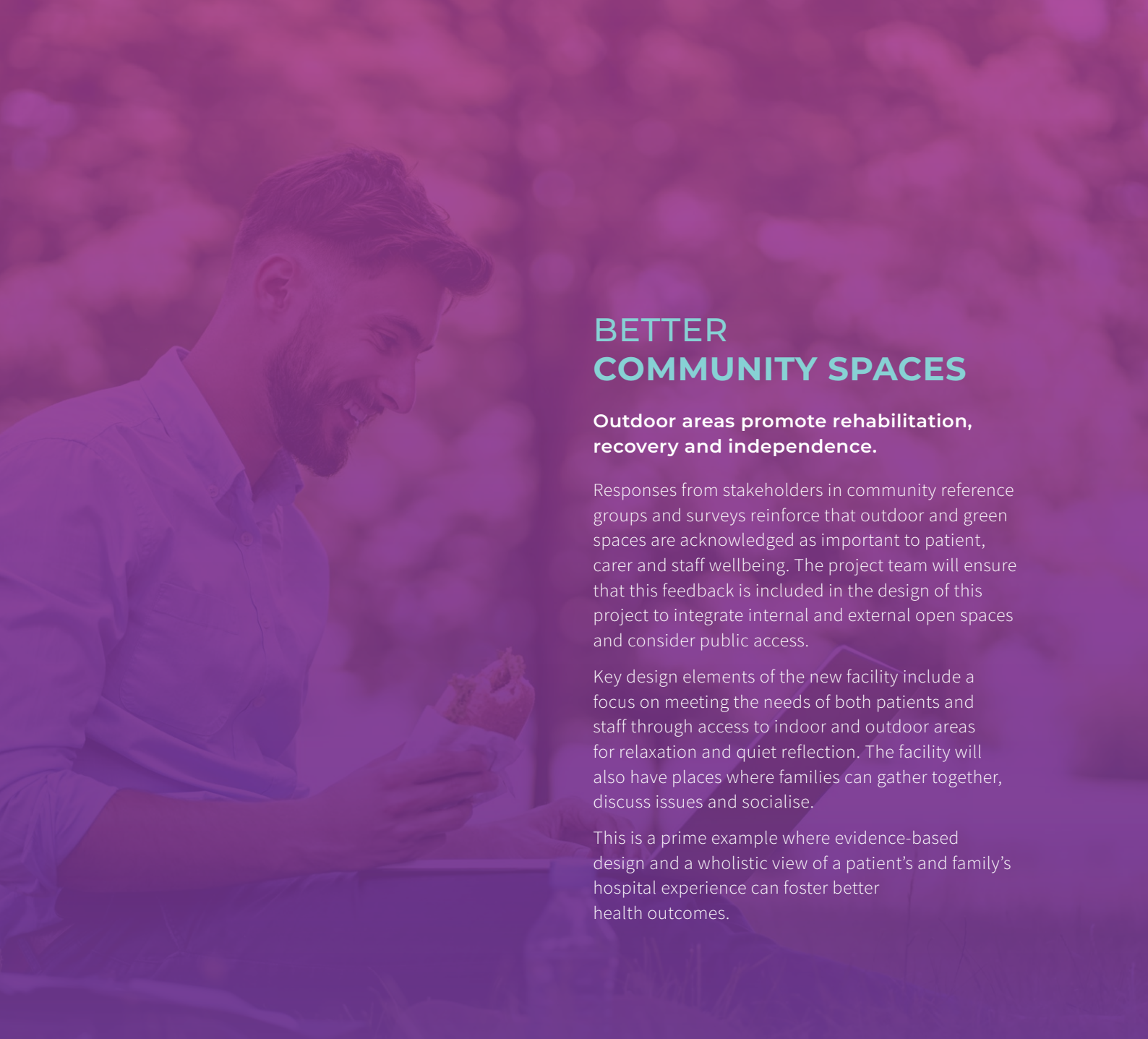
Benefits of the updated design following feedback include:

- ▶ Patients, visitors and clinicians will be able to move between existing facilities and the new building through an enclosed walkway at ground level.
- ▶ A new and expanded main entry vehicle drop-off point for the main hospital in front of Building 2 facing Yamba Drive. Vehicles can then conveniently progress to the multi-storey hospital carpark.
- ▶ People wishing to self-present at the new emergency department will be dropped off within a designated zone at the front of the facility on Hospital Road South.

New enclosed walkway linking the new Emergency Department with Building 2 ▶







BETTER COMMUNITY SPACES

Outdoor areas promote rehabilitation, recovery and independence.

Responses from stakeholders in community reference groups and surveys reinforce that outdoor and green spaces are acknowledged as important to patient, carer and staff wellbeing. The project team will ensure that this feedback is included in the design of this project to integrate internal and external open spaces and consider public access.

Key design elements of the new facility include a focus on meeting the needs of both patients and staff through access to indoor and outdoor areas for relaxation and quiet reflection. The facility will also have places where families can gather together, discuss issues and socialise.

This is a prime example where evidence-based design and a wholistic view of a patient's and family's hospital experience can foster better health outcomes.

REDUCING OUR CARBON FOOTPRINT

The new facility will be all electric, helping to minimise the carbon footprint of the hospital and helping to contribute to a better environment for Canberrans.

Back-up diesel generators will also ensure the hospital can keep critical services running during an emergency power outage.

Other sustainability aspects of the facility's design will include ecological or park-like spaces with benches and landscaping, which promote personal wellbeing and align with the government's climate change strategy.

As the ACT shifts to a carbon-neutral future, the Canberra Hospital Expansion will improve current green star ratings and support a target of net zero emissions.

A healthcare worker in a white uniform is smiling and looking down at an elderly patient who is sitting up in a hospital bed. The patient is wearing a light blue hospital gown and is looking up at the healthcare worker. The scene is brightly lit, suggesting a window with natural light. The overall mood is warm and caring.

MEETING FUTURE DEMAND FOR HEALTHCARE

As the Canberra community grows, our healthcare services are growing with us.

Canberra's population and surrounding region is forecast to increase from under 412,000 people in 2017 to more than 530,000 people in 2032. Investment in our Canberra Hospital campus is also a long-term investment in our healthcare workers, ensuring they have ample facilities and resources to do the important job of caring for our community.

Once completed in 2024, the new emergency, surgical and critical healthcare facility is expected to attract more clinicians to train and stay in Canberra. Tertiary institutions such as the Australian National University and the University of Canberra will also offer modern teaching, training and research facilities at the hospital campus once Building 8 is completed next year. Attracting the best and brightest students and experienced clinicians to Canberra will promote a vibrant public health sector and support positive health outcomes for our community into the future.



NEXT STEPS

SEPTEMBER 2020

Multiplex and Major Projects Canberra to meet regularly with user groups and reference groups to continue the co-design process.

2021

Early works expected to commence in the first half of 2021 with the main works contract awarded in mid 2021.

AUGUST 2020

Multiplex and the ACT Government will commence the next stage of project development.

EARLY 2021

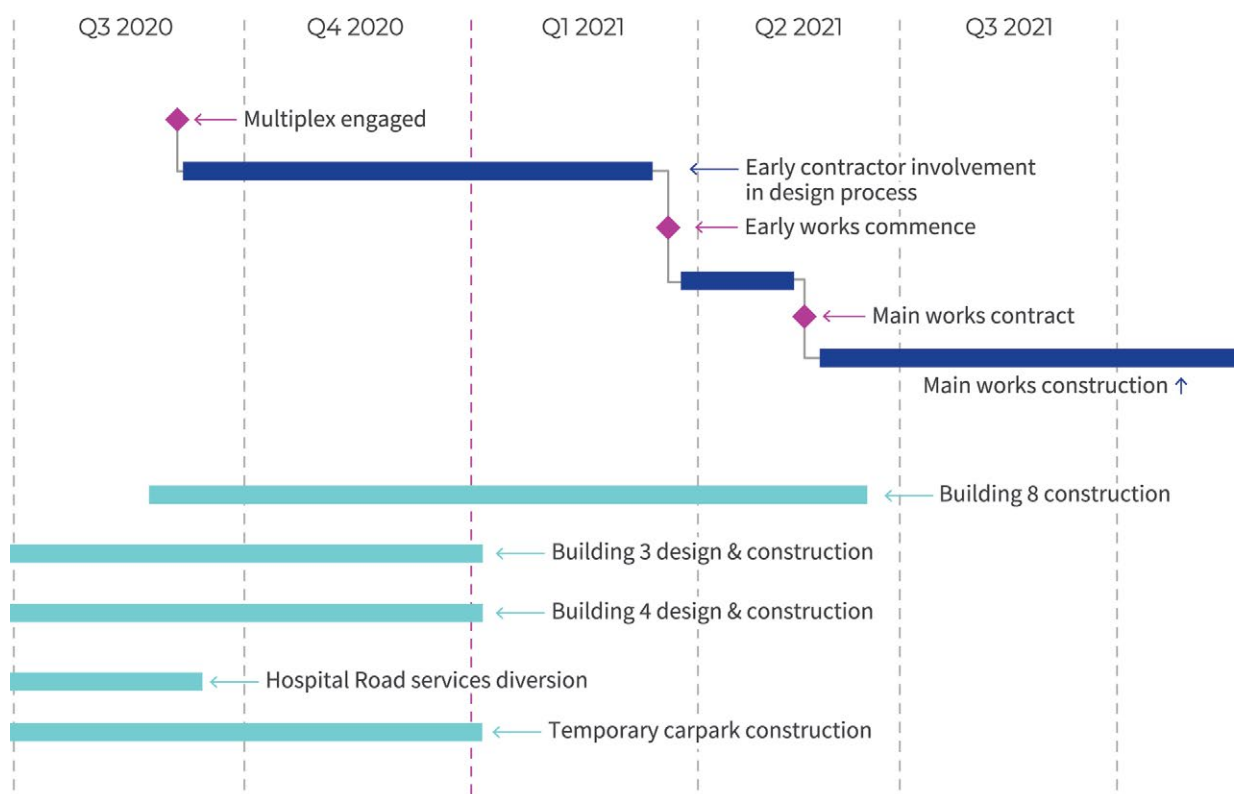
Development Application for the new healthcare facility will be available for comment.

2024

Construction complete. Testing and commissioning of new emergency, surgical and critical health facility to commence.



THE YEAR AHEAD: CANBERRA HOSPITAL EXPANSION



LEGEND

- New emergency, surgical and critical healthcare facility

- Enabling works

- Milestone



GET INVOLVED

Join the conversation about the Canberra Hospital Expansion. Subscribe to project updates through the website to get the latest information, construction updates and to find out how you can get involved.

hospitalexpansion.act.gov.au

hospitalexpansion@act.gov.au

02 5124 9891