

Works Notification

Project: CIT WODEN PROJECT	Notification No: 16
Work Duration: From 27 April 2023	Date Issued: 13/04/2023
Work Area/ Location: Callam Street	
Description of Works: Closure of Callam Street Pedestrian Crossings	

Lendlease has been engaged by the ACT Government to deliver a new CIT campus, youth foyer and public transport interchange in Woden. This notification includes information about the upcoming works associated with construction of the CIT Campus, including general construction information on working times and what to expect.

Closure of Callam Street Pedestrian Crossings

From **Thursday, 27th April 2023** pedestrians and cyclists will no longer be able to cross at the temporary pedestrian crossing at the corner of Callam and Matilda Streets in Woden.

- Pedestrians and cyclists travelling west towards the Woden Town Centre will need to follow the footpath (see figure 01) heading north up to Launceston Street and cross at the traffic lights on the corner of Launceston and Callam Streets.
- Pedestrians and cyclists travelling east will need to follow the new footpath along the Hellenic Club (see figure 01) heading north up to Launceston Street and cross at the traffic lights on the corner of Launceston and Callam Streets

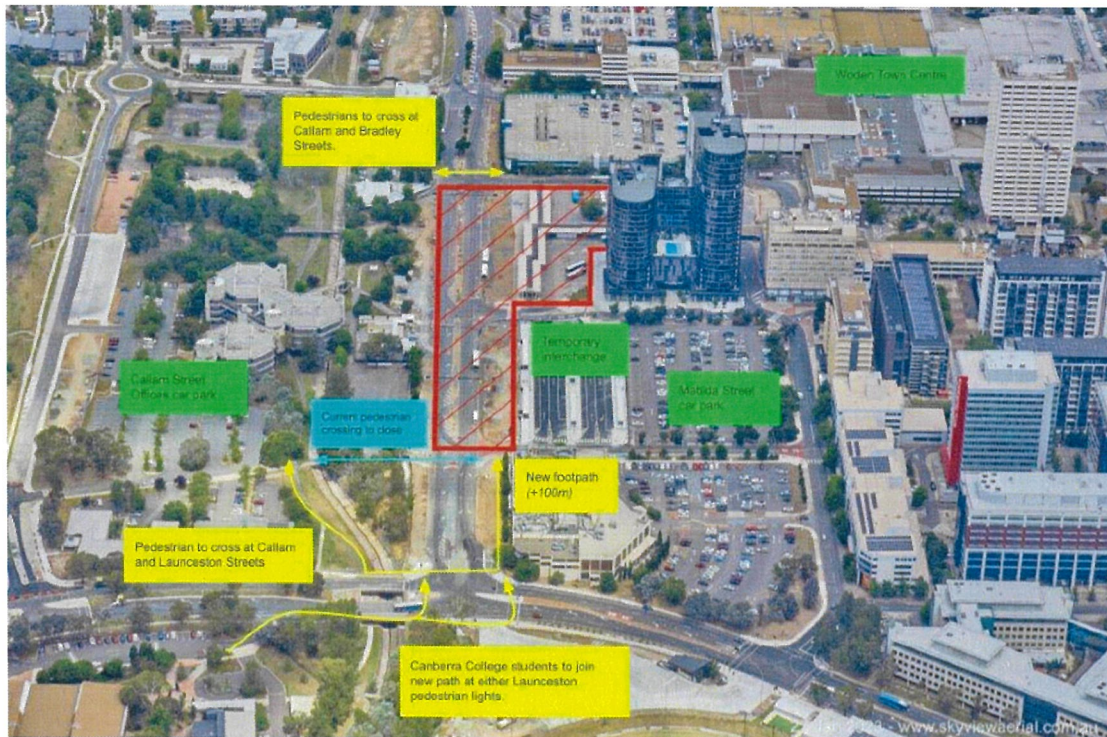


Figure 01. Crossing Routes.



This closure is in place to enable Lendlease to begin work on the new Woden Transport Interchange and to ensure the safety of pedestrians and cyclists while the work takes place.

These changes will be in place until the new Woden Transport Interchange is in operation in 2025.

Working hours and what to expect

Closure of Callam Street Pedestrian Crossings works will be undertaken during standard working hours of **6:00am to 6:00pm Monday to Friday**.

Out of Hours Work

Closure of Callam Street Pedestrian Crossings works have minimal impacts or disruptions to the current Woden Precinct operations and therefore out of hours works are not required in this instance.

Construction impacts

Every effort will be made to minimise disruption to the local community during these works, however we anticipate:

- Noise typical of a construction site.
- Traffic disruptions, including temporary speed reductions.
- Pedestrian Diversions.

We will endeavour to minimise noise impacts where possible by:

- Turning off equipment and vehicles when not in use.
- Working efficiently to limit durations of noisy equipment use.

If you have any questions or would like to know more about the works, please contact Thomas Moulds on 0415 256 942 or email thomas.moulds@lendlease.com

More project and roadwork information is available at www.act.gov.au/citcampuswoden

Yours sincerely,

A handwritten signature in black ink, appearing to read "Thomas Moulds", is written over a horizontal line.

Thomas Moulds
Construction Manager
Lendlease Construction