

# CANBERRA HOSPITAL EXPANSION PROJECT UPDATE



AUGUST 2021

## NEW HOSPITAL STAFF CARPARK TO EASE PARKING PRESSURE

**A new temporary carpark for hospital staff is now operational at the old CIT Woden site. It will offer more than 1,100 spaces, freeing up valuable carparking across the Canberra Hospital campus.**

The opening of this new temporary staff carpark means that staff vehicles will be directed away from the hospital campus, easing traffic congestion and freeing up space in Canberra Hospital's southern multi-storey carpark.

The completion of the carpark has taken just 10 months to build with construction creating local jobs for Canberrans.

The temporary carpark is one of many new projects to improve facilities for staff, patients and visitors at Canberra Hospital and to prepare the campus for construction to begin later this year on the new Emergency, Surgical and Critical Healthcare building.

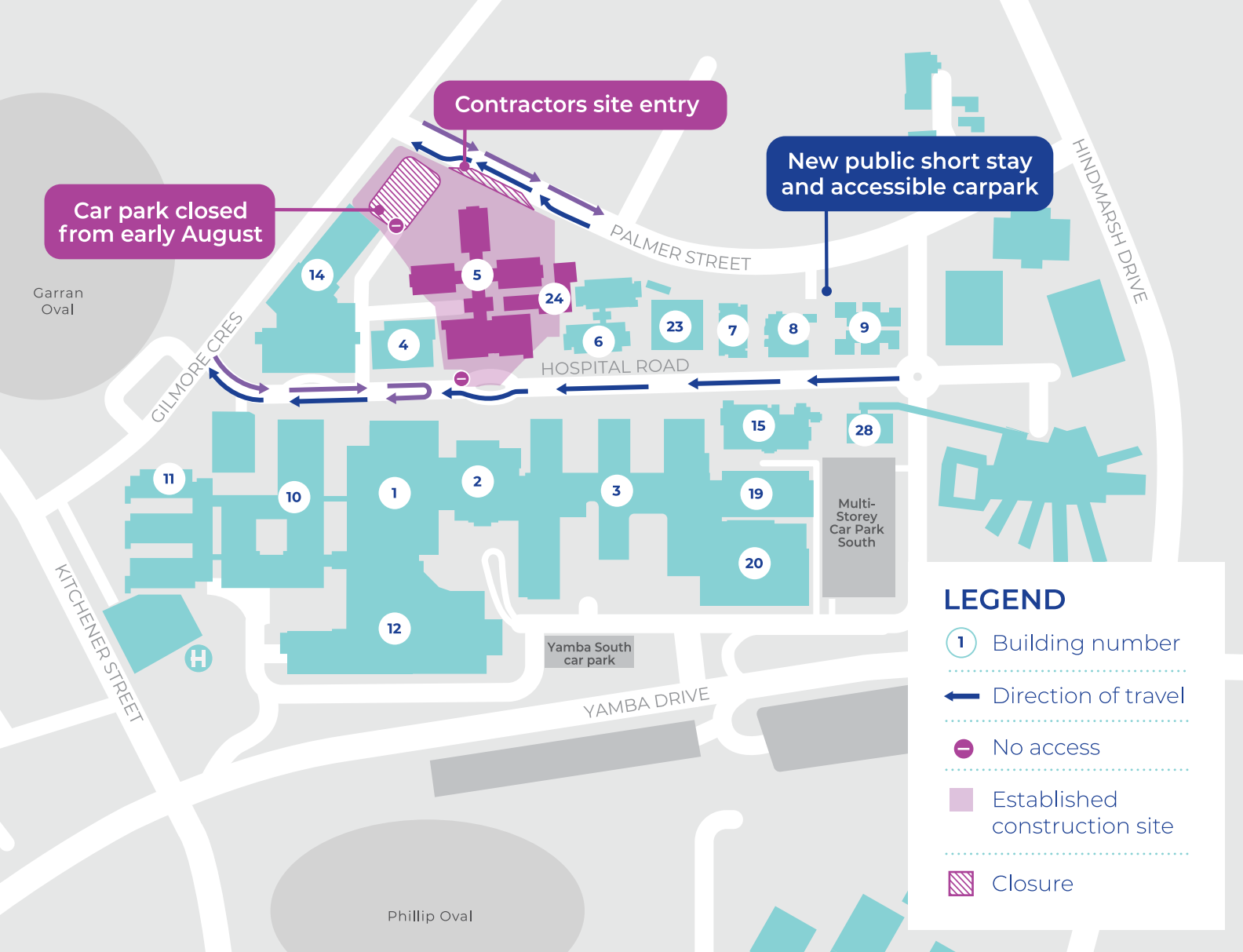
### KEY FACTS

- Temporary carpark is exclusive for hospital staff
- More than 1,100 car spaces
- Helping to free up valuable carparking across the hospital campus
- Separate compound for construction workers working on the new facility



## INSIDE THIS UPDATE

- ▶ Traffic changes around the Canberra Hospital campus
- ▶ Building 8 open for use
- ▶ Construction contract signed
- ▶ Latest refurbishment projects completed
- ▶ Master Plan update
- ▶ See the latest designs



## CHANGES TO TRAFFIC ARRANGEMENTS

If you've been to Canberra Hospital recently, you may have noticed several changes across the campus.

As part of construction works for the Canberra Hospital Expansion site establishment has started to demolish two existing buildings (5 and 24).

This, together with other early works activity, has impacted local traffic arrangements.

### Hospital Road

The southern section of Hospital Road has reopened as a one-way through road from south to north. This is to facilitate the closure of one side of the roundabout outside the Main Entry. Hospital users can still use the Main Entry drop-off point outside Building 2 then must continue north to exit the campus at Gilmore Crescent.

The northern section of Hospital Road will remain two-way to service Centenary Hospital for Women and Children and National Capital Private Hospital. New signage is in place to assist visitors with these changed arrangements.

### Palmer Street

A site entry has been established off Palmer Street. This will be in place for the duration of the construction period and will ultimately be the entry point for the new ambulance bay serving the Emergency Department. Later this year, a section of Palmer Street to the south of the site entry will be configured to include a construction vehicle lane to avoid significant impacts of construction deliveries on Palmer Street traffic.

Although construction of the new emergency building will require materials to be delivered to site via Gilmore Crescent and via Palmer Street,

the ACT Government and Multiplex will make every effort to minimise disruption to the local community.

### Building 8 carpark

A carpark behind Building 8 is now open for public use. This includes 23 two-hour and accessible car spaces.

### National Capital Private Hospital carpark

The carpark behind National Capital Private Hospital will close in early August 2021. Users will be redirected to park at the new building 8 and 9 carparks as well as the multi-storey carpark.

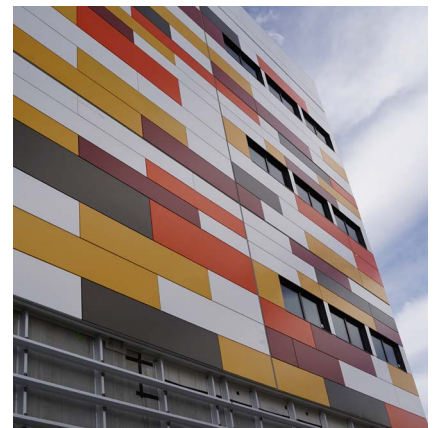
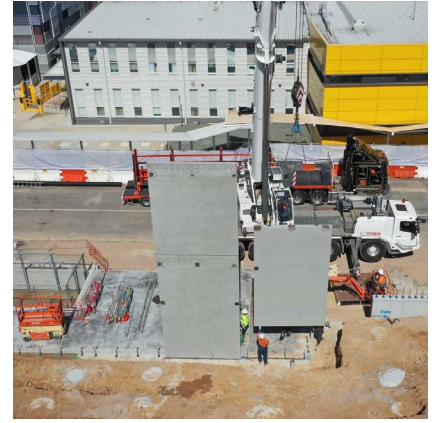
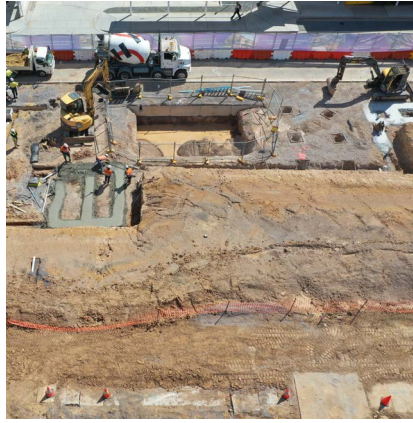
## BUILDING 8 CONSTRUCTION COMPLETE AND OPEN FOR USE

In another milestone for the Canberra Hospital Expansion Project, construction of the new Building 8 is now complete.

Officially opening on 21 June, the building now houses the Canberra Sexual Health Centre, and has delivered enhanced teaching and training facilities for the hospital, including accommodation for the ANU Medical School, University of Canberra and a new Surgical Training Centre.

Construction of Building 8 supported over 100 local jobs and many local businesses. Major Projects Canberra worked closely with main contractor, SHAPE, and Canberra-based company ABS Façade to develop an innovative structural and façade system that facilitated a fast-tracked construction program.

The build took ten months, with the building's structure and façade panels installed in just five months.



▲ Top left: Aerial shot, October 2020. Top right: Day one of structure installation, 27 November 2020. Bottom left: Façade installation, 15 January 2021. Bottom right: Building 8 Façade appearance, April 2021.

▼ Final construction, May/June.



## DESIGN AND CONSTRUCTION CONTRACT SIGNED

The Canberra Hospital Expansion Project has reached a major milestone with the construction contract signing for the new Emergency, Surgical and Critical Healthcare building.

The ACT Government and Multiplex signed the main design and construction contract to deliver the Canberra Hospital Expansion at a virtual signing event in late June.

The contract signing marks the continuation of the partnership and the next step towards building the

new Emergency, Surgical and Critical Healthcare building.

The ACT Government initially partnered with Multiplex in August 2020 to progress the new facility's design to the development application stage, in consultation with user groups and the wider community.

Over the coming months, the ACT Government and Multiplex will continue to consult with hospital staff, consumers and the local community as part of the detailed design process and commence construction of the new building.

- ▼ Canberra Hospital Expansion Project Director Martin Little (L) and Major Projects Canberra Chief Projects Officer Duncan Edghill with the Multiplex team joining via video conference at the virtual contract signing event on 29 June, 2021.



- ▼ Still from the new flythrough showing the paediatric emergency treatment area

To mark the signing of the design and construction contract, Minister for Health, Rachel Stephen-Smith, released a new flythrough of the Canberra Hospital Expansion.

Visit [hospitalexpansion.act.gov.au](https://hospitalexpansion.act.gov.au) to check it out.

- ▼ Minister Stephen-Smith announcing the signing of design and construction contract and new flythrough.





## TAKE A LOOK AT THE LATEST DESIGNS

In May, the Development Application (DA) for the new Emergency, Surgical and Critical Healthcare building was lodged with the planning authority.

To support the DA, the latest designs and artist impressions of the new building were released. These were the culmination of more than 12 months of ongoing consultation with hospital staff, consumers, hospital users, families, carers and the general public.

Thank you to everyone who participated in the design process and provided input and feedback.

Take a look at more of the new designs online at [hospitalexpansion.act.gov.au](http://hospitalexpansion.act.gov.au)

**Images:** Top: Main Plaza Entry Hospital Road South, Middle: Corner of Palmer Street and Gilmore Crescent Bottom: "Welcome Hall" view from Building 2 Entry



## NEW ACCOMMODATION FOR PATIENTS AND CARERS

Patients and carers are enjoying newly refurbished accommodation facilities in Building 9 on the Canberra Hospital campus.

These refurbishment works are part the Canberra Hospital Expansion Project. The accommodation opened last month and provides much needed upgraded residential accommodation for patients from surrounding regional areas undergoing treatment, or families who need to be close to their loved ones, while they are in hospital.

Previously used as doctors' residences, the refreshed accommodation is more welcoming and comfortable for users.

These works have helped to relocate accommodation services from Building 5 before it is demolished to make way for the new Emergency, Surgical and Critical Healthcare building, due to start construction later this year.



## MASTER PLAN UPDATE: CANBERRANS WANT A MORE ACCESSIBLE AND CONNECTED HOSPITAL CAMPUS

Over a six-week period, the ACT Government undertook community and stakeholder engagement to understand what the community and campus users believe is important and what needs to change across the Canberra Hospital campus.

More than 530 individuals and groups provided feedback on the Canberra Hospital campus and its development over the next 20 years.

The main feedback themes from the community during the first phase of consultation include:



### Access and accessibility

Concerns about how the campus can be accessed by car and public transport, how easily it can be navigated and the desire for a more intuitive campus that is easier to navigate.



### Safety, security

A strong desire to have design elements incorporated on the campus to create a safer campus where people feel more secure.



### Clinical services and staff and public amenity

Including the retail offerings on the campus.



### Carparking

Feedback indicated strong support for more carparking, and closer to where clinical services are delivered.



### Outdoor space

More green space on campus and more places for children to play. There was also a desire to have green space visible from hospital windows.



### Broader ACT health services

Comments regarding new hospitals in other areas of Canberra and other locations for this hospital.

Phase 2 of Master Plan consultation will start soon. Keep watching YourSay for updates.

Visit [www.yoursay.act.gov.au/canberra-hospital-master-plan](http://www.yoursay.act.gov.au/canberra-hospital-master-plan).