

LIGHT RAIL TO WODEN

STAGE 2A CITY TO COMMONWEALTH PARK



Light Rail - Stage 2A will deliver Canberrans a convenient new transport option from Alinga Street to Commonwealth Park to provide a greater connection between the city and the lake.

Three new stops will extend the light rail network by 1.7 kilometres, while London Circuit will be raised to enhance the amenity and connectivity of the city. The project is jointly funded by the ACT Government and the Australian Government.

To view the alignment or ask the team a question, [click here](#) to visit our interactive map.

BENEFITS

Stage 2A is the first important step in taking light rail all the way to Woden. Benefits of expanding the light rail network to Woden will include:

- providing more convenient and reliable transport options for people on the southside
- helping to prevent future traffic gridlock
- cutting transport emissions to support Canberra's transition to zero net emissions
- creating better city spaces along the route where people can live and work, connected by public transport.

KEY FEATURES

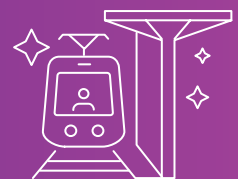
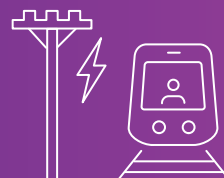


**INTEGRATED
TICKETING**
BETWEEN LIGHT RAIL
AND BUS NETWORK

5 NEW
LIGHT RAIL VEHICLES
INCORPORATED INTO THE ROUTE



**WIRE-FREE
TRACK
DESIGN**



**3 NEW
STOPS AT**
EDINBURGH AVENUE,
CITY SOUTH AND
COMMONWEALTH PARK



**TRAFFIC SIGNALLING,
ROAD IMPROVEMENTS
AND TREE PLANTINGS**



THE STOPS

EDINBURGH AVENUE

The Edinburgh Avenue stop will service residents and major businesses in the area, along with the Australian National University.

CITY SOUTH

The City South stop will provide connection to the waterfront and New Acton.

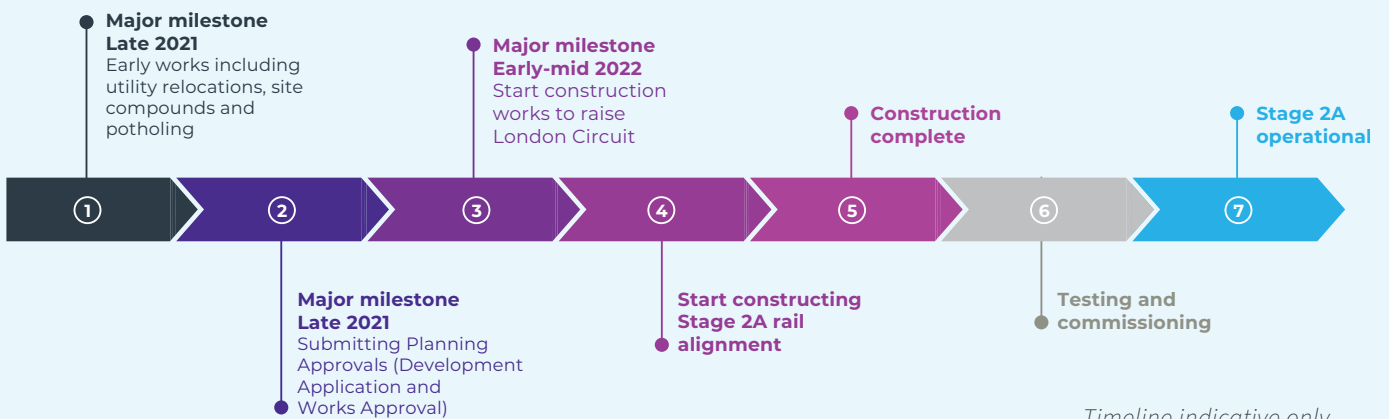
COMMONWEALTH PARK

The third stop on Stage 2 will be built adjacent to Commonwealth Park, offering a convenient way to reach lakeside events, attractions and parks.

LEGEND

- Light Rail Stage 1: Gungahlin to City
- Light Rail Stop
- Light Rail Stage 2A: City to Commonwealth Park
- Proposed Light Rail Stop
- Light Rail Stage 2B: Commonwealth Park to Woden
- City

NEXT STEPS



Timeline indicative only



RAISING LONDON CIRCUIT

Raising London Circuit is a major road project that is essential to constructing Light rail to Woden Stage 2A. It will provide a more convenient at grade intersection for light rail and its passengers, and will improve access to Canberra's city centre.

WHAT ARE THE BENEFITS OF RAISING LONDON CIRCUIT?

In addition to enabling Stage 2 of light rail, raising London Circuit will provide improved level access for pedestrians and a wider range of transport modes between the CBD, City West, Acton and the Acton Waterfront. The project will improve the overall connectivity and amenity of our city precinct and make it easy for people to move around by foot, bicycle or car. Amenity of the local area will be further improved by landscaping, with new trees to be planted along London Circuit's eastern verge.

WHAT WILL RAISING LONDON CIRCUIT INVOLVE?

To facilitate the extension of light rail from the City to Commonwealth Park, London Circuit needs to be raised by six metres to create an at grade intersection with Commonwealth Avenue. Works will involve changing the current split-level, overpass-underpass configuration into a more pedestrian and cyclist-friendly intersection by raising the road level on either side of Commonwealth Avenue. This process will require the delivery of approximately 60,000 cubic metres of fill.

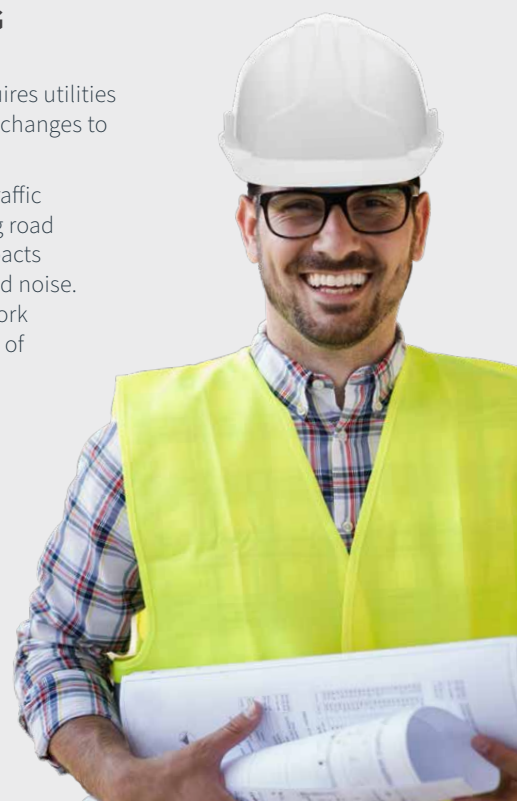
WHAT IMPACTS SHOULD I EXPECT DURING CONSTRUCTION?

Raising London Circuit requires utilities relocation, earthworks and changes to the local road network.

This will cause significant traffic disruptions to the adjoining road network, plus localised impacts including dust, vibration and noise. Notification of disruptive work will be provided in advance of activities starting.

Raising London Circuit is still undergoing detailed design.

We are committed to working closely with the community to identify and ease impacts wherever possible.



EARLY WORKS

Before we can construct the Light rail to Woden Stage 2A, some early work must be completed to ensure the construction can proceed in the most efficient manner possible for the community. This includes geotechnical investigations and utility relocations.

WHEN WILL EARLY WORKS START?

Some early works are already underway. This includes low impact activities such as geotechnical investigations and identification of potential service and utility locations. You may see some project team members out in the local community completing these activities.

Works likely to cause more significant impact, including excavation to confirm utility locations and relocate utilities, are expected to start in mid-2021. We will work with the local community in advance of these works to minimise potential impacts and provide advance notification of expected disruptions.

WHAT IMPACTS WILL SERVICE RELOCATIONS CAUSE?

Service relocations will likely cause some road traffic, pedestrian and active transport impacts. The level of impact will depend on the requirements assessed during geotechnical investigations which are currently underway. We are committed to working with the local community to mitigate these impacts wherever possible and providing advanced notice of works which may cause disruption.

Please [click here](#) to subscribe to project updates.

PLANNING APPROVALS

An Environmental Assessment is being developed to support the submission of ACT Government Development Applications and Commonwealth Works Approvals which are expected to be submitted in late 2021.

CONSTRUCTION TIMINGS

Major physical works for Stage 2A will begin with utility relocations later in 2021 followed by the raising of London Circuit and then the construction of the light rail alignment. Raising London Circuit will begin in 2022 and is an important enabling road upgrade creating an at grade intersection for light rail vehicles to move between London Circuit and Commonwealth Avenue.

We are working hard for the construction of the light rail alignment to start in 2024 on the newly raised London Circuit. This final step of constructing the project which includes track-laying, is expected to take around two years to complete.

The final delivery timeline will be subject to receiving Works Approval from the NCA, Development Application from the ACT Planning and Land Authority and signing a contract with our delivery partner.



CONTACTING US

Are you getting the right information you need, in a suitable format? Please contact us at any time with suggestions for how we can better communicate appropriate and timely project updates.

@ lightrailtowoden@act.gov.au ▶ www.yoursay.act.gov.au/light-rail-to-woden 📞 1800 956 409



Australian Government

BUILDING OUR FUTURE



ACT
Government

2021 V2