



ACT Heritage Council

Entry to the ACT Heritage Register

Heritage Act 2004

20150. ANZ Bank Building (former ES&A Bank)

Section 3 Block 1

CITY

This document has been prepared by the ACT Heritage Council.

This entry which was previously part of the old heritage places or the old heritage objects registers (as defined in the ***Heritage Act 2004***), as the case may be, is taken to be registered under the ***Heritage Act 2004***.

Conservation Requirements (including Specific Requirements), as defined under the ***Heritage Act 2004***, that are contained within this document are taken to be Heritage Guidelines applying to this place or object, as the case may be.

Information restricted under ***the old heritage places register or old heritage objects register*** is restricted under the ***Heritage Act 2004***.

Contact: ACT Heritage Council c/o Secretary PO Box 144
Enquiries: phone 02 6207 2164 fax 02 6207 5715

Lynham ACT 2602
e-mail heritage@act.gov.au



ACT Government



Helpline: 02 6207 9777
Website : www.cmd.act.gov.au
E-mail: EnvironmentACT@act.gov.au



ACT Heritage Council

**AUSTRALIAN CAPITAL TERRITORY
ENTRY TO AN INTERIM HERITAGE PLACES REGISTER FOR:**

ANZ Bank Building (former ES&A Bank)

**Block 1 Section 3 City
(17 London Circuit Canberra City)**

For the purposes of s.54 of the *Land (Planning and Environment) Act 1991*, this heritage assessment for the above place has been prepared by the ACT Heritage Council as the basis for its inclusion within an interim ACT Heritage Places Register, Pursuant to resolution: 86/9 on 4 December 2003

Notification Effective: 19 November 2004

Background material about this place and additional copies of the Entry are available from::

**The Secretary
ACT Heritage Council
PO BOX 144
LYNEHAM ACT 2602**

**Telephone (02) 6207 7378
Facsimile: (02) 6207 2200**

LOCATION OF PLACE: (see figure 1)

17 London Circuit, Canberra City ACT 2000
Block 1 Section 3 City

FEATURES THAT ARE INTRINSIC TO THE HERITAGE SIGNIFICANCE OF THE ANZ BANK BUILDING

The features intrinsic to the heritage significance of the 'place' and which are therefore required for conservation include:

- (i) the setting of the place that enables its scale and form to be appreciated from the public domain of London Circuit and University Avenue.
- (ii) the five-storey scale of the building
- (iii) the fabric of the building integral to the original design by Stuart McIntosh
- (iv) the external form and detail of the building including sunshades, granite facings and external portico.
- (v) the interior form and detail of the building including the 'open well' staircase, the banking chamber and the strong horizontal theme of the building evident in the structural design elements and interior finish details.

STATEMENT OF SIGNIFICANCE

The ANZ Bank building was designed by bank architect Stuart McIntosh in 1961 for the English Scottish and Australian bank and was completed by 1963. It is an elegant commercial building that embodies stylistic departure from multistorey office buildings of the period and demonstrates the post war retail expansion of commercial banking. It demonstrates adoption of the Modern style of Architecture in an Australian context in Canberra. It is an innovative and sophisticated response to the bank as a building type in the 1960s that nevertheless employs materials and finish effects traditionally associated with bank buildings such as granite, sandstone and marble.

The building is a bold and sculptural composition featuring horizontal design elements. These elements are in the form of continuous horizontal windows with horizontal projecting sunshade devices of varying width and thickness. The latter appear to hover unsupported due to their separation by glass. The visual effect is heightened by the use of a predominantly black and white colour scheme. The building thus embodies its abstract design intent in that its structure is not overtly expressed. The form and volume of the ground floor banking chamber enables the dominant horizontal theme to continue internally by accommodating a 'floating' extension of the lowest cantilever sunshade and by allowing long horizontal views through the building. The 'open well' nature of the staircase also contributes to the ability to look across the ground floor. The horizontal design theme is also demonstrated internally by the continuity of internal/external ceiling planes and details, large-scale rectangular plane light fittings, and use of decorative horizontal

wood panelling.

The design of the building was advanced and technologically innovative for its time. It conserved energy with the use of a heat pump. It was also designed to achieve climate control with the closely spaced projecting horizontal planes that shaded the windows and were integral to the design, however the siting and orientation of the building reduced the effectiveness of these measures. Design elements of the building reflect use of proportional ratios by the architect.

The building occupies a dominant site on a key corner block on London Circuit and University Avenue in Civic. It is part of a precinct of commercial buildings planned as Hobart Place. The building demonstrates the stage in Canberra's post federal planning history of development of commercial precincts of multi-storey buildings. This stage was coincident with the influence of the International Style, when building design adopted modern functional approaches.

The architecture and historical and environmental context of this office building has potential to contribute to the education of architects and designers and their understanding of Late Twentieth Century architectural styles and their adoption.

In 1996 the building was awarded the Royal Australian Institute of Architects ACT Chapter (RAIA ACT) *25 Year Award* for a Public-commercial Building. The building is cited in Metcalf (2003) and Bingham Hall (1999) as a commercial building of architectural merit in Canberra.

SPECIFIC REQUIREMENTS FOR THE CONSERVATION OF THE ANZ BANK BUILDING

In accordance with s.54 (l) of the *Land (Planning and Environment) Act 1991*, the following specific requirements are identified as essential to the conservation of the heritage significance of the place. These specific requirements are prepared to implement the following conservation policy for the place.

The original features of the ANZ Bank Building, including its original form, fabric, scale and setting shall be managed in a manner appropriate to conserving its significance.

Any action relating to these specific requirements is development for the purposes of the Act and will require approval prior to undertaking the activity. To undertake development without approval may be an offence.

CONSERVATION OBJECTIVE - *To conserve the significance of the ANZ Bank Building by retaining the building and the features intrinsic to its heritage significance.*

Specific Requirement 1.1:

Applications for development of Block 1 Section 3 City shall only be approved where they are in accordance with a Conservation Management Plan prepared for the building endorsed by the ACT Heritage Council.

Specific Requirement 1.2:

Conservation and maintenance of the building and features intrinsic to its heritage significance shall be undertaken in accordance with the Conservation Management Plan prepared for the building.

Specific Requirement 1.3:

Restoration of original fabric and details no longer present should be encouraged and if proposed, should be undertaken in accordance with the Conservation Management Plan prepared for the building.

Specific Requirement 1.4:

Total demolition of the building shall not be permitted except in exceptional circumstances where it can be demonstrated that the building is so structurally unsound as to be beyond reasonable economic repair, or the existing condition of the building poses a significant health or safety risk that is beyond reasonable economic repair.

Any application for total demolition must include a professional structural, health or other assessment that clearly validates the need for demolition.

Co-development of the adjacent northern blocks may be permitted up to and including the northern (rear) façade of the building. Such co-development shall be undertaken in accordance with the Conservation Management Plan prepared for the building.

Specific Requirement 1.5:

Where in the opinion of the Authority, neglect of the ANZ bank building has contributed to it becoming structurally unsound so as to necessitate total demolition, redevelopment of the site shall not exceed the gross floor area and height of the identified building and

additions to a replacement building shall not be permitted within three years of completion of the replacement building.

Specific Requirement 1.6:

New street furniture, signage and plantings within the frontage and verges addressing London Circuit and University Avenue shall be designed and installed in a manner that does not detract from the significance of the place and shall not detrimentally affect the view of the building from the public domains of London Circuit and University Avenue.

ANZ BANK BUILDING

TERMINOLOGY

International Style – The functional architecture devoid of regional characteristics created in Western Europe and the USA during the early twentieth century and applied throughout the world (Harris 1977:300).

Brise Soleil – A fixed or movable device such as fins or louvres designed to block the direct entrance of sun rays into a building (ibid:74).

Cantilever- a beam, girder or truss or other structural member which projects beyond its supporting wall or column (ibid:87)

Description of Place

Background

The former ANZ Bank Building occupies a prominent location on the corner of London Circuit, University Avenue and Darwin Place (figure 1). It was designed by Stuart McIntosh who was in charge of the architectural department of the English, Scottish and Australian Bank (ES&A Bank) at the time. Yuncken Freeman were the supervising architects and the main building contractor was the A.V. Jennings Construction Company Canberra Ltd. The building was constructed as a branch of the ES&A Bank in association with the Legal and General Assurance Society Limited (RAIA ACT:2002). It is one of a number of private enterprise commercial buildings forming the Hobart Place offices and as such was part of the first private enterprise development in Canberra.

Designed at a time in Canberra's development when the quality of town planning and civic design were considered paramount Hobart Place was planned to create a civic square commercial precinct (NCDC 1962:25). The building envelope of each block within the square was closely defined prior to development and planners were considering the form and streetscape unity of the completed group of buildings rather than just individual buildings. The design brief specified the overall aim being to create an office precinct of maximum amenity and architectural quality (Hargreaves 2003 23). It was the view of the NCDC that the designs were to have currency for the future Canberra:

“Buildings can be erected which would be appropriate in size and location for a much later period in the life of any normal Australian town. For example the buildings in Hobart Place would be suitable in scale and arrangements for parts of Brisbane, Adelaide or Perth. As a first stage construction, however, the Hobart Place group would not be normal in any other Australian city of the size of Canberra today [1965]. Yet it appears to be the right kind of building group to encourage on the open land lying between the emerging Canberra city business centre and surrounding development” (NCDC 1965:84).

The result was a composition of a group of nine buildings laid out around a central landscaped pedestrian courtyard (figure 2). The group included the AMP, T&G and City Mutual Building, designed by Stephenson and Turner, the MLC Building designed by

Bates Smart and McCutcheon, and the ES&A Building designed by McIntosh. The AMP building was the tallest development at 12 storeys in height. There were varied views about the ultimate success of the final precinct design, although two buildings in the group the MLC and ES&A buildings were recognised as the better of the designs. In particular the ES&A Bank was noted to be of “...*striking design with highly dramatic projecting concrete sun hoods, faced with vitreous mosaic tiles...*” (Taylor 1994b:33).

The ANZ (former ES&A Bank) building is a significant component of the Hobart Place development that marks the particular stage in the commercial development of Civic (figure 3) and the period when multi-storey office blocks were becoming an increasingly established form of construction. This type of commercial development also reflected then national and international trends of increasing post war economic prosperity. Similar developmental stages occurred in cities throughout Australia and worldwide. The period is marked in urban areas by characteristic buildings of dramatically increased height and innovative architectural design.

Planning regulations in Canberra resulted in relative restraint of such developments in the city in the 1960s, particularly in relation to the maximum heights permitted. Nevertheless developments such as the ES&A Bank managed to implement innovative construction techniques and establish architecturally designed works of distinction.

The building was opened on the 26th July 1963 by the then Prime Minister, Sir Robert Menzies. A commemorative plaque on the London Circuit façade records the event.

Building Function

The construction of multi-story office buildings in the 1960s was undertaken by both private and public sector agencies, predominantly for the purpose of housing and displaying their own businesses. Business activities such as banking and insurance sales are typical of the period (Taylor 1994). The buildings often also included additional rented or leased office spaces for a variety of tenants. The ANZ Bank building was constructed by the ES&A Bank to accommodate its business and the public interface of the building was primarily devoted to banking. When it opened in 1963 Mr A. E. Brown was the manager of the branch and worked in a ground floor office. Legal and General Assurance Society Ltd (managed by Mr John Bishop) operated their Canberra office from the first floor, as did Permanent Trustee Co NSW Ltd and Roderick Ross and Associates. The remaining floors were separately tenanted (RAIA 2002) and included the firms of Smith & Johnson and Commercial Union Insurance (Hargreaves 2003: 12).

The ES&A Bank merged with the ANZ Bank on 1 October 1970. The ANZ relocated out of the building on 7 May 2001 and a number of floors were observed vacant in 2002. The building is largely vacant in 2003.

Internally the buildings generally included functional spaces to cater for public reception and interaction, important company business, general offices, communal staff areas and service areas (Taylor 1994 *Interior: function:3*).

Building Design and Form

The building is modern in style. (It also has characteristics that would place it within what Apperly and Irving term the 'Late Twentieth Century International Style', an architectural style that dates approximately from 1960 and onwards (Apperly et al 1989:232)). This style was influenced by functionalism and abstract art styles. Rationality, as expressed through clarity and consistency of detailing (Taylor:1994:*interior finishes*:1), comprehensibility and simplicity are key values of modernity. The building design employed use of proportional ratios (RAIA ACT pers comm. 2004)

The design of the ANZ building and the choice of materials employed in its construction demonstrate adoption of the Modern Style in Australia. The ANZ Bank building designed by McIntosh demonstrates how a design response to the style can reflect and respond to the Australian climate, materials, the Australian planning and building conditions and indeed, ACT planning requirements for the particular corner site location at the time. McIntosh's stated design intentions were for the building to harmonise with the Canberra landscape of low hills and rolling plains and to create bold sun and shadow effects (ANZ 1963 *in* RAIA 2002).

Apperly *et al* 1989 note that the application of the Late Twentieth Century International Style in Australia is typified by commercial and institutional buildings. Such buildings characteristically display enhanced three dimensional qualities and employ sculptural precast concrete with traditional materials such as polished granite cladding (1989:232). Typical external characteristics of the style include cubiform overall shapes, cantilevered forms, contrasts in texture, overhangs and external sun control devices (ibid:235).

The ANZ Bank building is of cubiform overall shape. It has overhangs and external sun control devices integrated into the design, an assertive cantilever and strong horizontal emphasis in the overall design (figures 4, 5 and 6). The building has a visually powerful abstract sculptural form and its corner block location has enabled development of a generous and elaborate façade.

The building is five storeys in height and is constructed of reinforced concrete faced with precast concrete slabs, with a lightly textured sand coloured finish on external facing walls. The ground floor façade on University Avenue is predominantly glass but partially faced with polished black South Australian granite which provides a marked contrast in colour and texture to the sandstone and glass surfaces. The granite is applied in an irregular coursed ashlar pattern i.e. rows of variable thickness but blocks of consistent width. The choice of Australian granite is also typical for commercial buildings at this time (Taylor 1994:*external skin cladding*:5).

Bank buildings have traditionally used relatively prestigious building finishes and materials such as granite and sandstone to convey an impression of permanence, quality and solidity. The use of granite and sandstone-effect finishes demonstrates an element of continuity between more traditional designs and the emerging new commercial and banking architecture of the time.

The striking visual character of the building is established by its projecting horizontal sunhoods located on all facades of the building. Sunshades cover the southern,

eastern and part of the western facades (figure 4). A smaller series of shades covers part of the western and northern facades (figure 6). The shades commence at floor level and are of varying thickness, width and spacing. There are triple layers of hoods for each floor, the thicker hoods at floor level. The horizontal hoods are separated by continuous horizontal windows installed in multiple panes. The lowest shades act as porticos over the entry points. The lowest shade on the southeastern face of the building continues internally and 'floats' within the ground floor banking chamber.

The horizontal planes serve to provide both a striking visual effect and were designed for a practical function, acting to shade the interior from the glare of the sun and heat and reduce traffic noise. The concept of form following function is characteristic of the style. The shades are an exaggerated expression of the period architectural interest in '*brise soleil*' sun shading. Smaller horizontal planes on the western corners define the outline of the building as well as providing a sun control function. Unfortunately the siting and orientation of the building within Hobart Place has reduced the effectiveness of these features. The edges of the hoods were originally faced with white glass mosaic tiles and the tops were lined with blue tiles to give soft interior reflection (RAIA 2002).

Building Interior

The original internal design of the building also exemplified the style and period of its expression. Taylor notes that the dominant themes governing the detail and selection of internal finishes in buildings of this period are those of modernity and internationality (1994:interior finishes:1).

Internationality resulted in Australian design responses that often employed endemic materials but were equally likely to also incorporate design elements and finishes of clearly foreign nature. The banking function too required relatively prestigious finishes to convey an appropriately dependable financial atmosphere. The interiors of the ES&A Bank utilised a variety of Australian materials and modern finishes. The manager's office and visitor rooms located at the western end of the building were panelled in Australian blackwood and black Australian granite was placed around the lift and entry areas. The lift lobby and corridors were panelled in vertical timber boarding, and a wall that separated the strong room and staff amenities and extra work spaces was finished in off-white vinyl panelling (RAIA 2002).

There is also continuity between materials and design elements used internally and externally. As noted above, the lowest horizontal external plane continues internally, flowing into the space of the banking chamber, with the edge still faced with white glass mosaic tiles. The black Australian granite finishes were common externally and internally.

The main banking area on the ground floor measured 24 x 8 m. The chamber ceiling was concrete. A 13 x 3.6 m light fitting was suspended from the ceiling and swept over the banking chamber, providing an abundance of evenly reflected and distributed light (ibid) (figure 7). Elaborate pendant lighting was commonly used in the entry foyers and large chambers of post war commercial multi-storey buildings to highlight the volume of these spaces (Taylor 1994:*interior lighting*:3).

Counter space was also generous and each teller's section was set off by two-inch thickness slabs of solid green marble (RAIA 2002).

The building has an internal stair of open risers, again a typical element in buildings of the period (Taylor 1994: *interior finishes*:1994).

The windows of the banking chamber facing London Circuit are in clear glass, framed in black anodised aluminium. Grey glass is used for the upper floors and would have functioned to reduce glare. Air conditioning was included in the building at construction (RAIA 2002). The incorporation of a heat pump into air conditioning systems was innovative for the time (Taylor 1994:*services air conditioning*).

Condition and Integrity

The building was completed in 1963. IN 1972 and 1998 minor structural alterations occurred (Hargreaves 2003). The building is in good condition externally and internally. The mosaic tile cladding was removed from the ends of the projecting planes on most levels prior to November 1986 (RAIA 2002).

The RAIA (2002) description of the building noted that the materials used internally appeared to be functional and serviceable. At that time the building retained its open riser stair treads, and vertical timber boarding to the lift lobby and corridor on all levels except level 3. The lift lobby and entry area floors were a mixture of carpet and black granite finishes. The lift was still framed in black granite (RAIA 2002).

All service areas had been upgraded, the general office areas had been re-partitioned and a false ceiling has been added (or upgraded) but it has been kept back from the window line to keep the high level glazing effect (RAIA 2002).

The banking chamber's original volume was noted to remain although the original fit out had changed, and the entry door had been relocated.

A site inspection undertaken in November 2003 noted some further change since the RAIA account. The ground floor interior although serviceable was of run down appearance with evidence of some minor water damage to paintwork at the northern end. Timber panelling was observed in the partitioned offices at the northern end of the ground floor, but it was not clear whether it was original. Timber panelling in the upper floor corridors and restroom areas was evident and composed of narrow horizontal strips of dark polished wood. The panelling was not evident on the second from top executive floor.

The black granite finish around the lift area was no longer evident.

The ANZ banking function changed with relocation of personnel on 7 May 2001.

Stuart McIntosh (Biographical material prepared by RAIA 2002)

Stuart McIntosh was born in 1924 in Adelaide and educated in Corowa, NSW. He served in PNG (New Guinea) and Malaysia (Borneo) in the 2/6 Field Regiment. He studied architecture at Melbourne University and after graduating worked in the architectural firm of Yuncken Freeman Bros, Griffiths and Simpson. He joined the staff of the architectural department of the ES&A Bank in 1952 and from 1954 was in charge of the department. He married and had two children.

During his time as bank architect McIntosh primarily designed small banks. He initially designed the Traralgon Branch of the ES&A Bank, then the Parkdale Branch and then the Malvern Branch in Victoria (Figure 8). The Malvern branch building completed in 1959 and the Canberra branch building are considered to be the finest of the series of bank designs he produced. These buildings are innovative and sophisticated architectural responses to a bank as a building type and represented the fresh and progressive image sought at the time by the Bank. Both buildings use cantilevered horizontal planes to achieve a bold abstract sculptural design as well as providing sun protection and contrast by the use of black and white shaded materials in their construction (*cf* figure 4 and figure 9).

The Malvern Bank is listed to the Victorian State Heritage Register (Place No. H1691) and is also entered to the Register of the National Estate.

Significance of McIntosh's Bank Designs

In 1996 the Canberra building was awarded the RAIA (ACT Chapter) 25 Year Award for a Public Commercial Building. The building was noted to be a sophisticated exercise in proportion and illusion with deep, closely spaced horizontal planes controlling the sun in and the view out (RAIA 2002).

Recent publications also cite McIntosh's designs for the ES&A Banks in Victoria and Canberra as important architectural works (RAIA ACT 1982; Bingham Hall 1999 (figure 9); Goad and Bingham–Hall 2001 *in* RAIA 2002; Metcalf 2003). The ES&A Bank Building in Malvern, Victoria, is listed in heritage registers at state and national level.

Status of Place at assessment date

- Nominated to the ACT Heritage Places Register
- Registered on the RAIA Register of Significant Twentieth Century Architecture.
- Included as an Indicative Place on the Register of the National Estate (i.e. awaiting formal assessment)

Bibliography

Apperly, R., R. Irving and P. Reynolds 1989 *Pictorial Guide to Identifying Australian Architecture*, Angus and Robertson.

ANZ Bank 1963 Official Opening ES and A Bank, Canberra Branch Hobart Place, (pamphlet) in RAIA 2002.

Bingham –Hall P 1999 *Austral Eden 200 Years of Australian Architecture*. Watermark, Balmain.

Cuffley, P 1993 *Australian Houses of the Forties and Fifties*. Five Mile Press cited in RAIA 2002

Goad, P and P. Bingham-Hall 2001 *New Directions in Australian Architecture*, Pesaro Publishing, Sydney in RAIA 2002

Hargreaves, L 2003 *ANZ Bank Building (formerly the English, Scottish and New Zealand Bank of Australia E.S & A Bank) Cnr London Circuit and University Avenue, Civic, Canberra ACT*. Unpublished student report UCAN

Harris , C.M 1977 *Illustrated Dictionary of Historic Architecture*. Dover New York

Metcalf, A 2003 *Canberra Architecture*. Watermark Architectural Guides. Watermark Press, Sydney.

NCDC 1962 *Canberra Development 1962-1967. A Report on the Development of Canberra for the Five Year Period July 1962 – June 1967*. Canberra ACT.

NCDC 1965 *The Future Canberra*. Angus and Robertson Sydney

RAIA ACT 1982 *An Architectural Guide To Australia's Capital*. Canberra

RAIA 2002 Register of Significant Twentieth Century Architecture, ANZ Bank Building.

Taylor, J 1994 *Post War II Multistoried Office Buildings in Australia (1945-1967)*. Report prepared for the Australian Heritage Commission

Taylor, J 1994b *Post War II Multistoried Office Buildings in Australia (1945-1967)*. Essay prepared for the Australian Heritage Commission

Acknowledgement: Description and background information has benefited from sources including the RAIA ACT register entry provided by the RAIA (ACT Chapter), Register of the National Estate and Heritage Victoria Heritage Register.

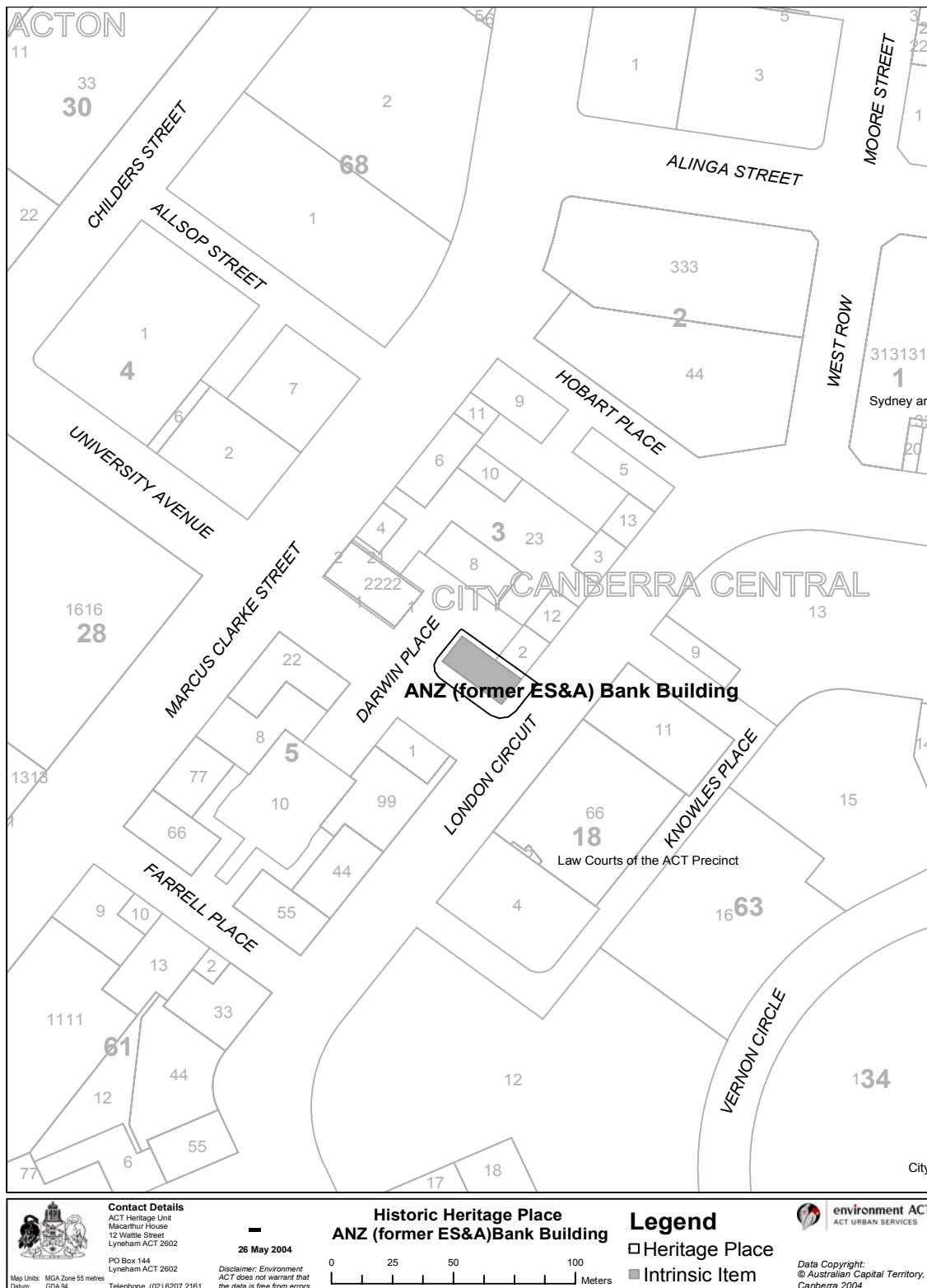


Figure 1. Location of the ANZ (former ES & A) Bank Building

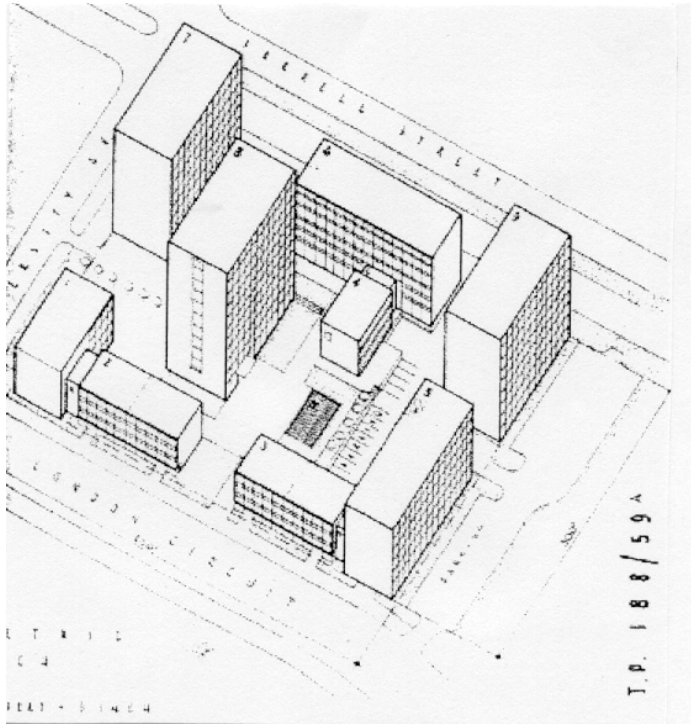


Figure 2. The Design Scheme for Hobart Place



Figure 3. The developed Hobart Place c.1965 (in NCDC The Future Canberra 1965)



Figure 4. The ANZ Bank Building (former ES & A Bank) designed by Stuart McIntosh – view from University Avenue.

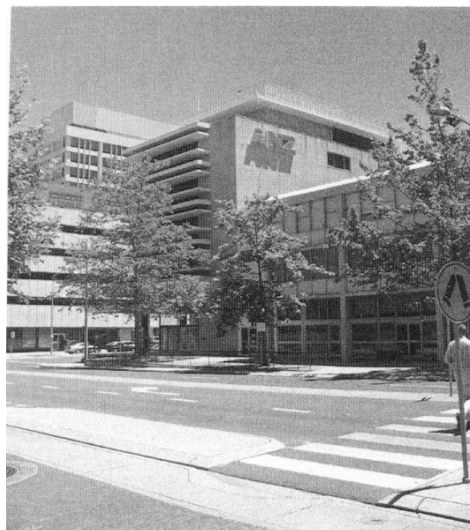


Figure 5. The ANZ Bank Building (former ES & A Bank) designed by Stuart McIntosh – view from London Circuit.



Figure 6. Smaller series of shades on northern façade – viewed from Hobart Place.

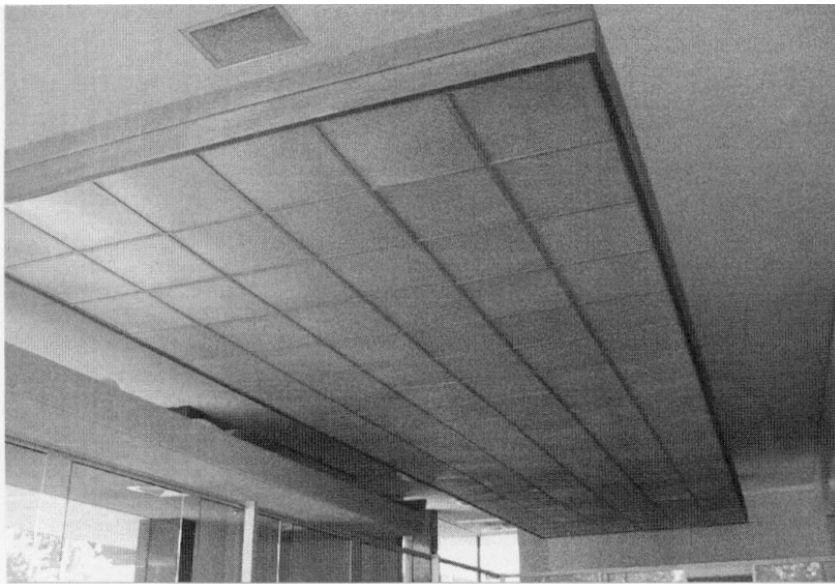


Figure 7. Ground floor light fitting



Figure 8. The former ES & A Bank Building, Malvern, Victoria, designed by Stuart McIntosh (photo: Heritage Victoria website)

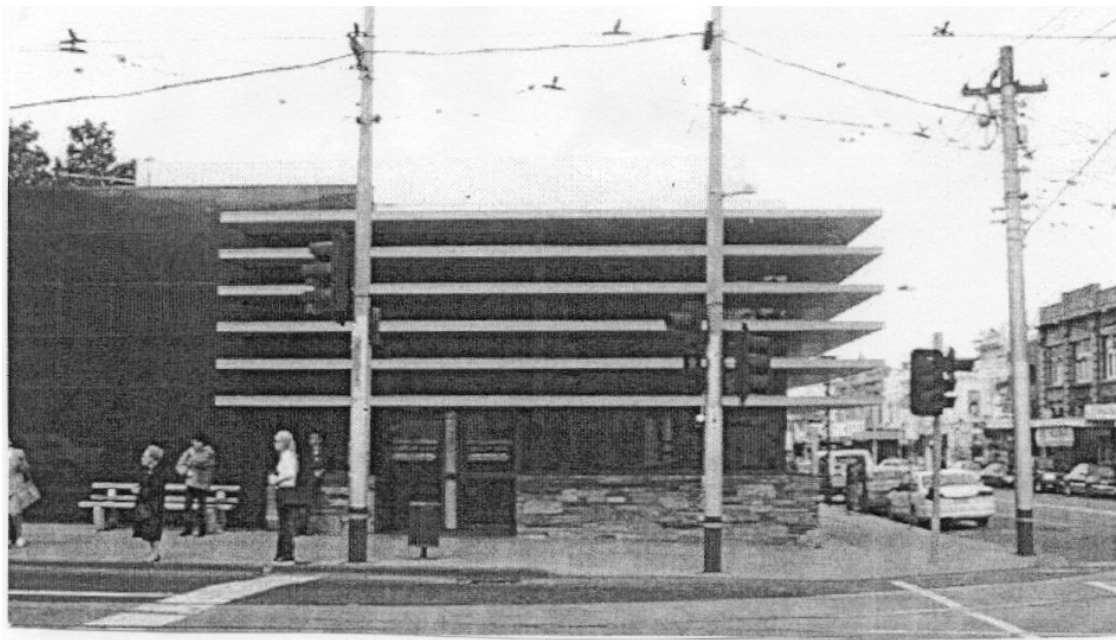


Figure 9. The ANZ Bank Building (former ES&A Bank) designed by Stuart McIntosh as portrayed in Bingham Hall 1999

Analysis against the criteria in Schedule 2 of the *Land (Planning and Environment) Act 1991*

Under section 56 of the *Land (Planning and Environment) Act 1991* the criteria for the assessment of the heritage significance of places are listed in Schedule 2 of the Act:

- (a) A place which demonstrates a high degree of technical and/or creative achievement, by showing qualities of innovation or departure or representing a new achievement of its time;**

The ANZ Bank building is a building that was advanced and technically innovative for its time. It was energy efficient and controlled energy use requirements for heating and cooling with the use of a heat pump and shading of the windows with external sun shades. Unfortunately the siting and orientation of the building does not permit optimal benefit from the external sun shade devices.

Published sources (Bingham Hall 1999, Metcalf 2003) cite the ANZ Bank building designed by Stuart McIntosh as a creative achievement. It is an elegant commercial building demonstrating the Modern Style (also described by Apperly and Irving 1989 as International Style) with a bold abstract sculptural yet functional design. The embodiment of the abstract design intent with such discreet structural expression is highly successful and significant.

The design represents an innovative and sophisticated response to the bank as a building type in the 1960s.

- (b) A place, which exhibits outstanding design or aesthetic qualities, valued by the community or a cultural group**

The building exhibits outstanding design qualities. It is of bold and abstract sculptural design featuring dominant horizontal design elements. These are in the form of continuous horizontal windows with horizontal projecting sunshade devices of varying width and thickness. The latter appear to hover unsupported due to their separation by glass. The visual effect is heightened by the use of a predominantly black and white colour scheme.

The building is valued by the community and highly valued by subsets of the wider community including the Royal Australian Institute of Architects (ACT Chapter) and Heritage organisations. The aesthetic values of the places are highlighted by its inclusion in notable publications of national and regional focus.

In 1996 the building was awarded the Royal Australian Institute of Architects ACT Chapter (RAIA ACT) *25 Year Award* for a Public-commercial Building. The building is cited in publications as a commercial building of architectural merit in Canberra.

- (c) A place which demonstrates a distinct way of life, taste, tradition, religion, land use, custom, process, design or function which is no longer practised, is in danger of being lost, or is of exceptional interest;**

The building demonstrates a distinctive design and use of materials that notify its style and date. It demonstrates modern architectural design as undertaken in the 1960s. It also demonstrates a distinct period in commercial banking in Australia involving construction of impressive architecturally designed buildings for suburban and urban branches which is no longer common practice.

- (d) A place which is highly valued by the community or a cultural group for reasons of strong or special religious, spiritual, cultural, educational or social associations**

n/a

- (e) A place which is the only known or only comparatively intact example of its type;**

n/a

- (f) A place which is a notable example of a class of natural or cultural places or landscapes and which demonstrates the principal characteristics of that class;**

The former ANZ Bank building is a notable and elegant example of the class of commercial multi- storey office buildings of its time (1960s). It has features that demonstrate the principal characteristics of the class i.e. its size and form, location within a commercial precinct, internal design that accommodates multiple tenants with functional spaced to cater for public reception and interaction, important company business, general offices, communal staff areas and service areas. The building is also a notable example of the class of commercial buildings designed for a banking function.

The building has attributes that are key or principal style indicators of the Late Twentieth Century International Style architecture as described by Apperly and Irvin 1989 p234, including: cubiform overall shape, overhangs for shade, external sun control devices, assertive cantilever construction, and contrasting textural finishes.

The design of the ANZ building and the choice of materials employed in its construction typify the adoption of modernity and internationality in Australia. The ANZ Bank building designed by McIntosh demonstrates a design response to the style, reflecting the Australian climate, local materials and the Australian planning and building industry at the time as well as the particular corner site location.

The ANZ Bank building in Canberra is a notable example of a collection of bank buildings designed by notable architect Stuart McIntosh for the English Scottish and Australian Bank. With reference to the ACT the building is the only identified commercial building designed by Stuart McIntosh.

- (g) A place which has strong or special associations with a person, group, event, development or cultural phase which played a significant part in local or national history;**

The building occupies a dominant site on a key corner block on London Circuit and University Avenue in Civic. It is part of a precinct of commercial buildings planned as Hobart Place. The building demonstrates the stage in Canberra's post federal planning history of development of commercial precincts of multi-storey buildings. This stage was coincident with the influence of the Modern (International) Style, when building design adopted modern functional approaches.

The ANZ (former ES&A Bank) building is therefore significant as part of a precinct development associated with a particular stage in the development of Civic, when multi-storey office blocks became an established form of construction. This type of

commercial development reflects national and international trends of increased post war economic prosperity. Similar developments occurred in cities throughout Australia and worldwide and are characterised by buildings of dramatically increased height.

The building has strong associations with the banking industry. It was designed specifically as premises for the ES & A Bank by their architect and continued to be used by the ANZ Banking corporation as bank premises following their merge. It demonstrates the development of the bank as a commercial institution located within urban commercial precincts in Australia.

The building also has associations with key construction industry firms who played an important role in the development of Canberra at the time. The building was designed by Stuart McIntosh who was in charge of the architectural department of the English, Scottish and Australian Bank (ES&A Bank) at the time. Yuncken Freeman were the supervising architects and the main building contractor was the A.V. Jennings Construction Company Canberra Ltd.

(h) a place which represents the evolution of a natural landscape, including significant geological features, landforms, biota or natural processes;

n/a

(i) a place which is a significant habitat or locality for the life cycle of native species; for rare, endangered or uncommon species, for species at the limits of their natural range, or for district occurrences of species

n/a

(j) a place which exhibits unusual richness, diversity or significant transitions of flora, fauna or natural landscapes and their elements

n/a

(k) A place which demonstrates a likelihood of providing information which will contribute significantly to a wider understanding of natural or cultural history, by virtue of its use as a research site, teaching site, type locality or benchmark site.

The building demonstrates a particular style and period and is likely to contribute to a national understanding of its architectural style. It also contributes to an understanding of Canberra's commercial development in the 1960s. Its form and detail contribute to an understanding of the regional adoption and interpretation of international trends in architectural design.

It contributes to the understanding of the bank as a particular class of commercial building and demonstrates developments in the characteristics of that class. It demonstrates that the adoption of modern forms of architecture by banking institutions (institutions that were by reputation conservative and dependable) was eased by the continuity of finishes and materials that continued to convey the tenets of permanence, stability and affluence fundamental to the banking character.

The likelihood of the building providing information that will contribute to an understanding of ACT cultural history and acting as an architectural benchmark is demonstrated by its inclusion in published literature. The ANZ Bank is included in the

collection compiled by Bingham-Hall 1999 termed "...a collection of Australian architectural gems – a demonstration of the evolution of heterogeneous regional architecture..." (1999:11). The ANZ Bank building is included in a recent publication *Canberra Architecture* where it is noted to be 'distinctive' with striking stylistic elements. The entry for the place notes that the strongly horizontal nature of the multiple façade elements 'connects' the work to that of Frank Lloyd Wright (Metcalf 2003:55).