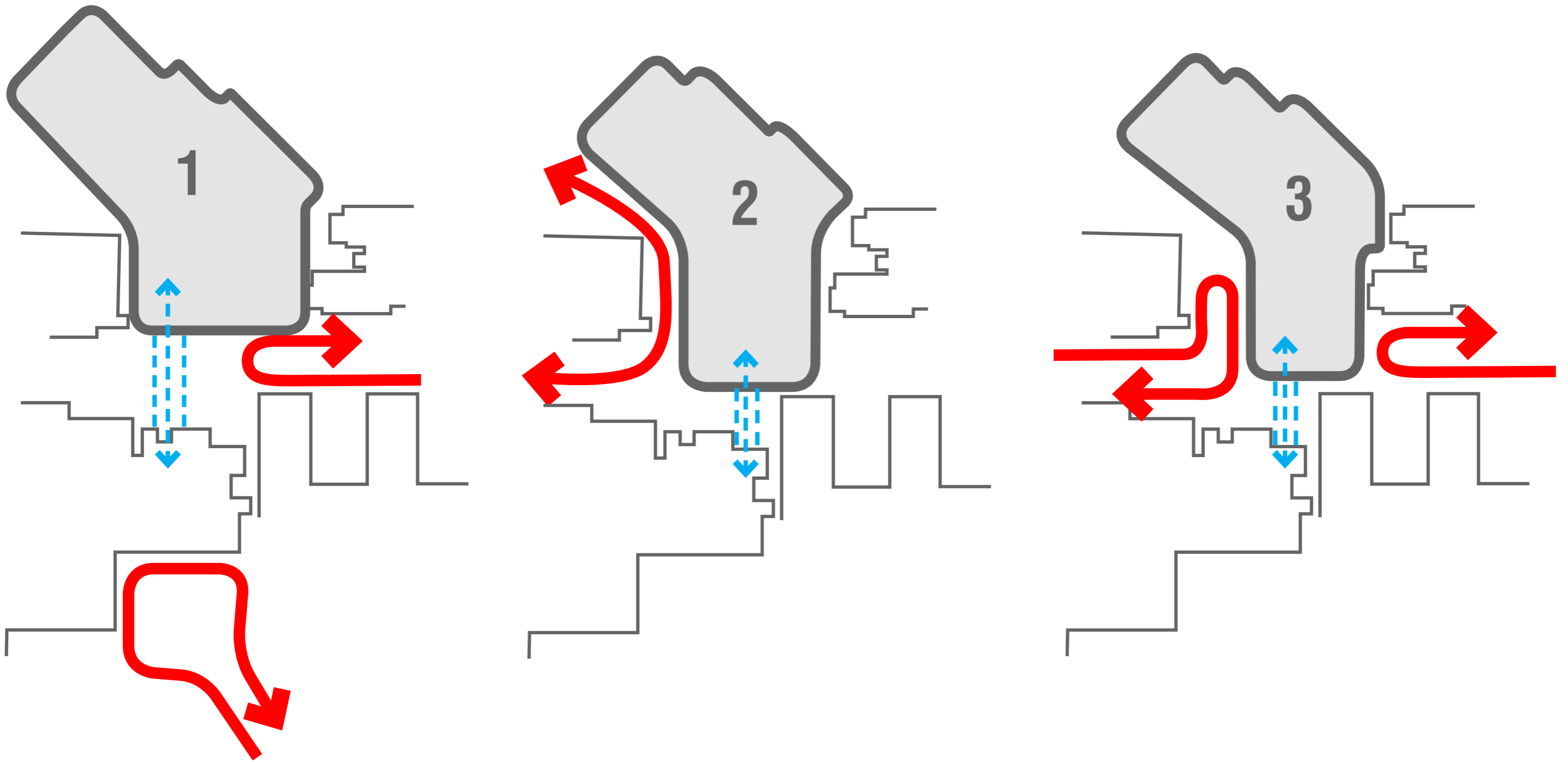




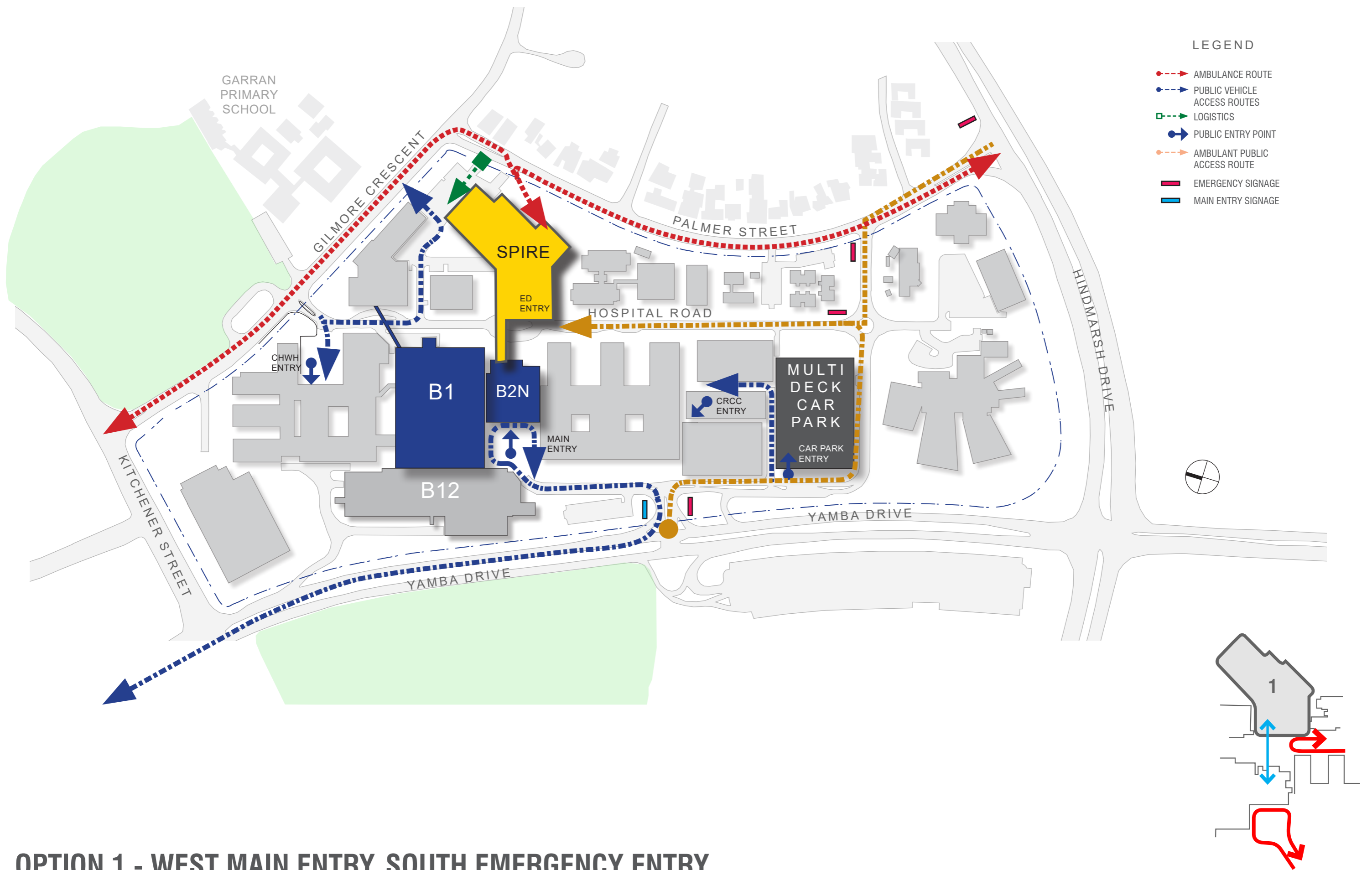
# CANBERRA HOSPITAL SPIRE project

Access & Entry Review Study - 19 November 2019

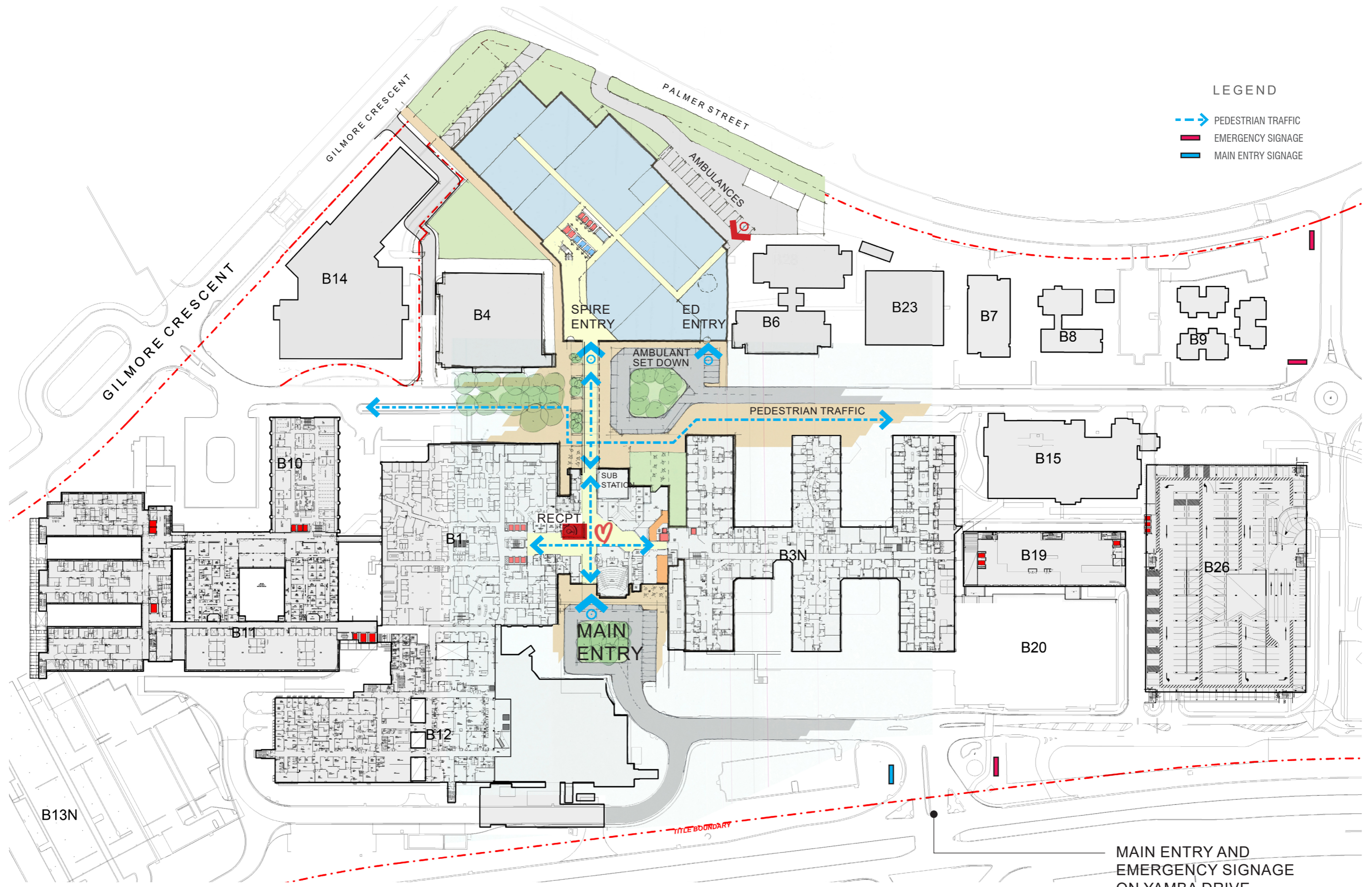




## SUMMARY OF OPTIONS



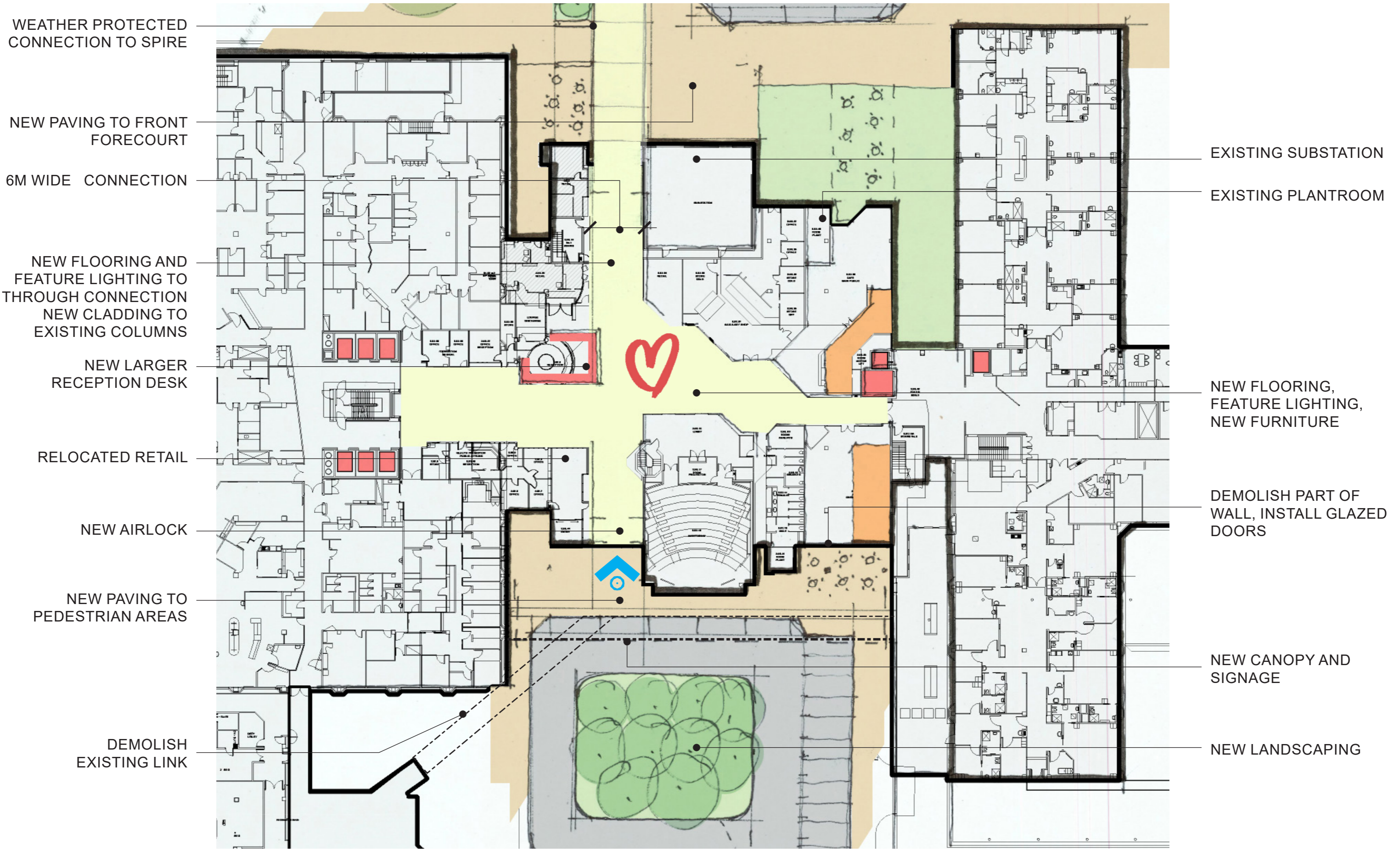
# OPTION 1 - WEST MAIN ENTRY, SOUTH EMERGENCY ENTRY



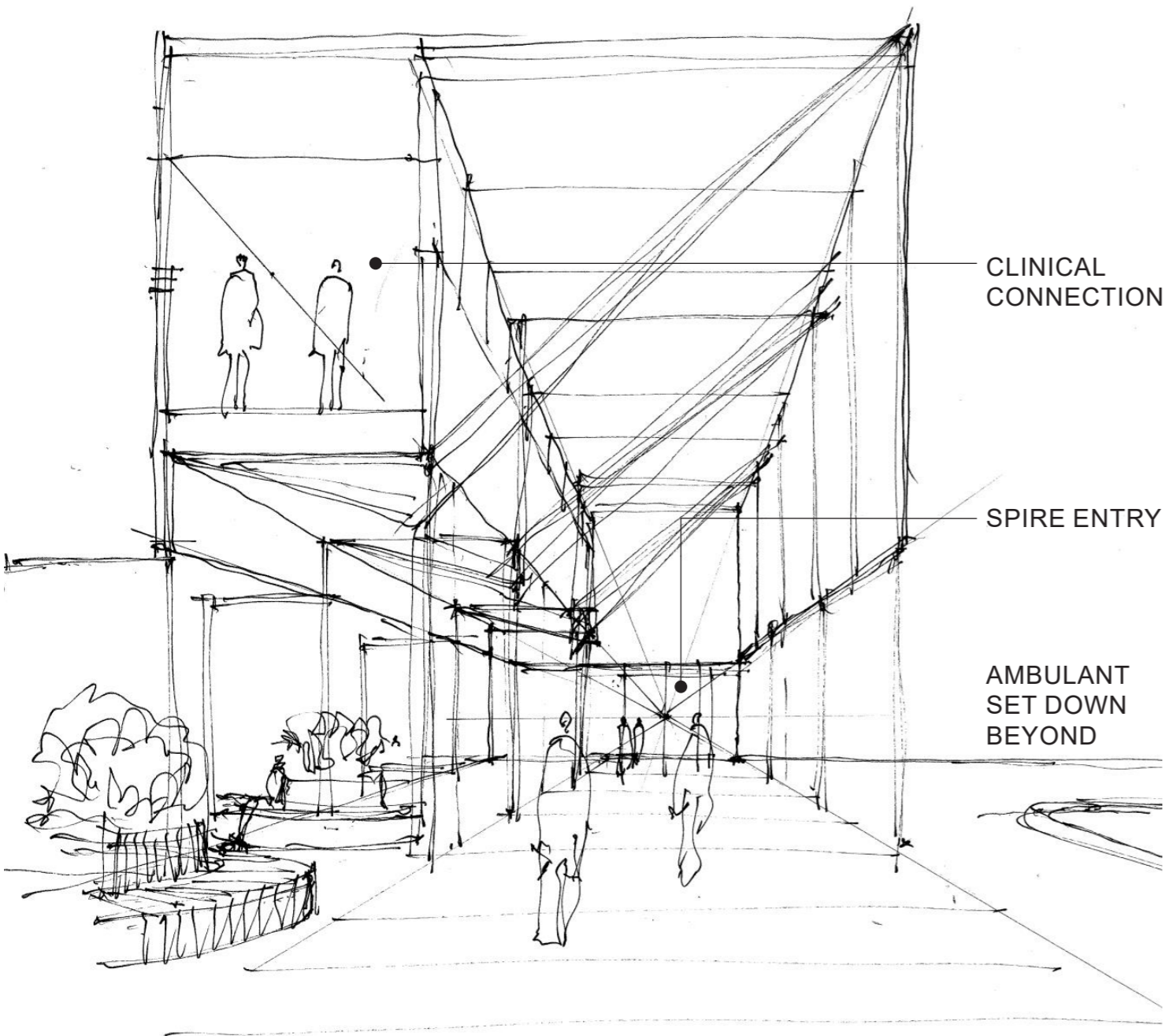
# OPTION 1 - WEST MAIN ENTRY, SOUTH EMERGENCY ENTRY

LEVEL 2 FLOOR PLAN

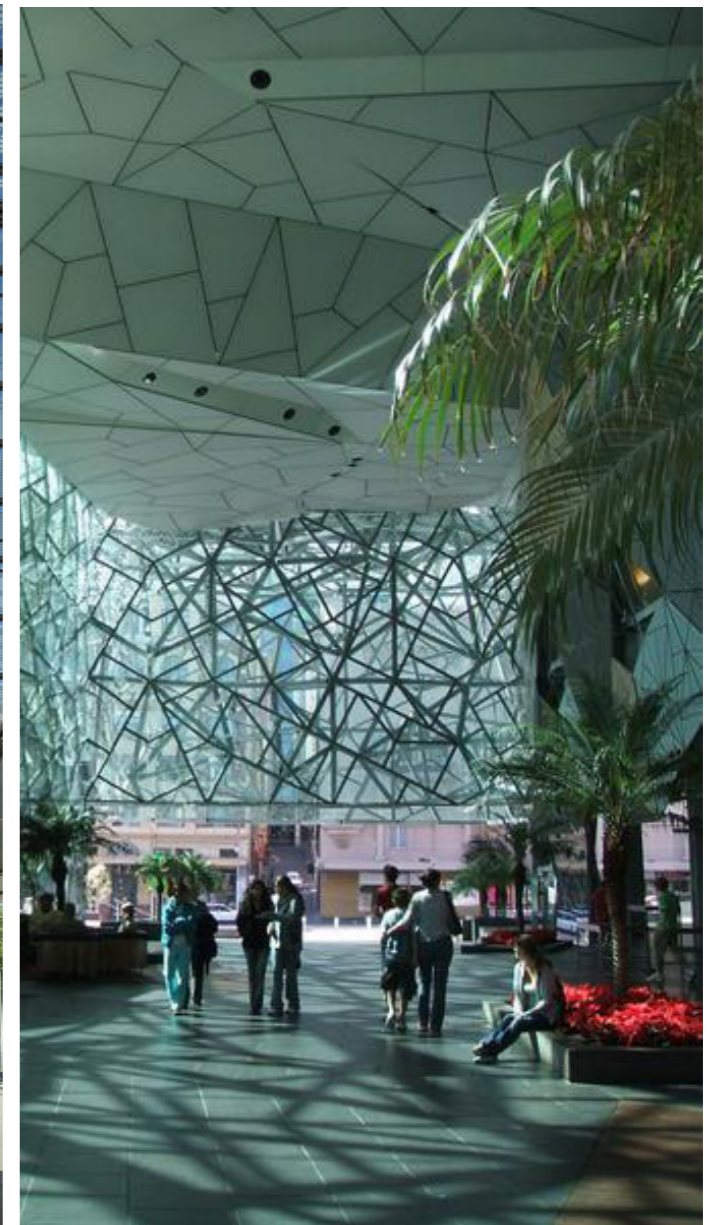
SPIRE | Project No. 10450



# OPTION 1 - WEST MAIN ENTRY, SOUTH EMERGENCY ENTRY

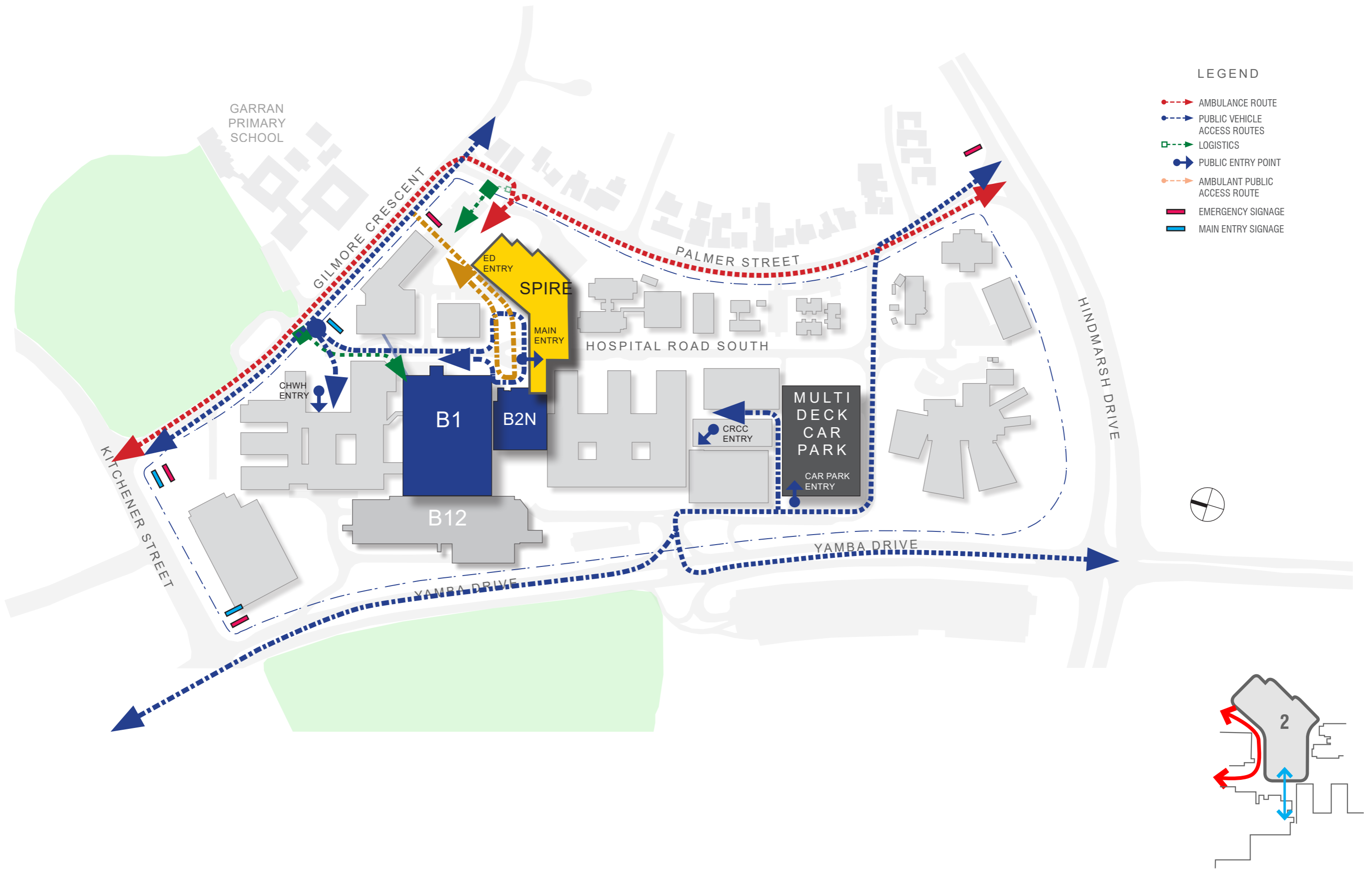


SPIRE LINK  
(VIEW FROM B2)

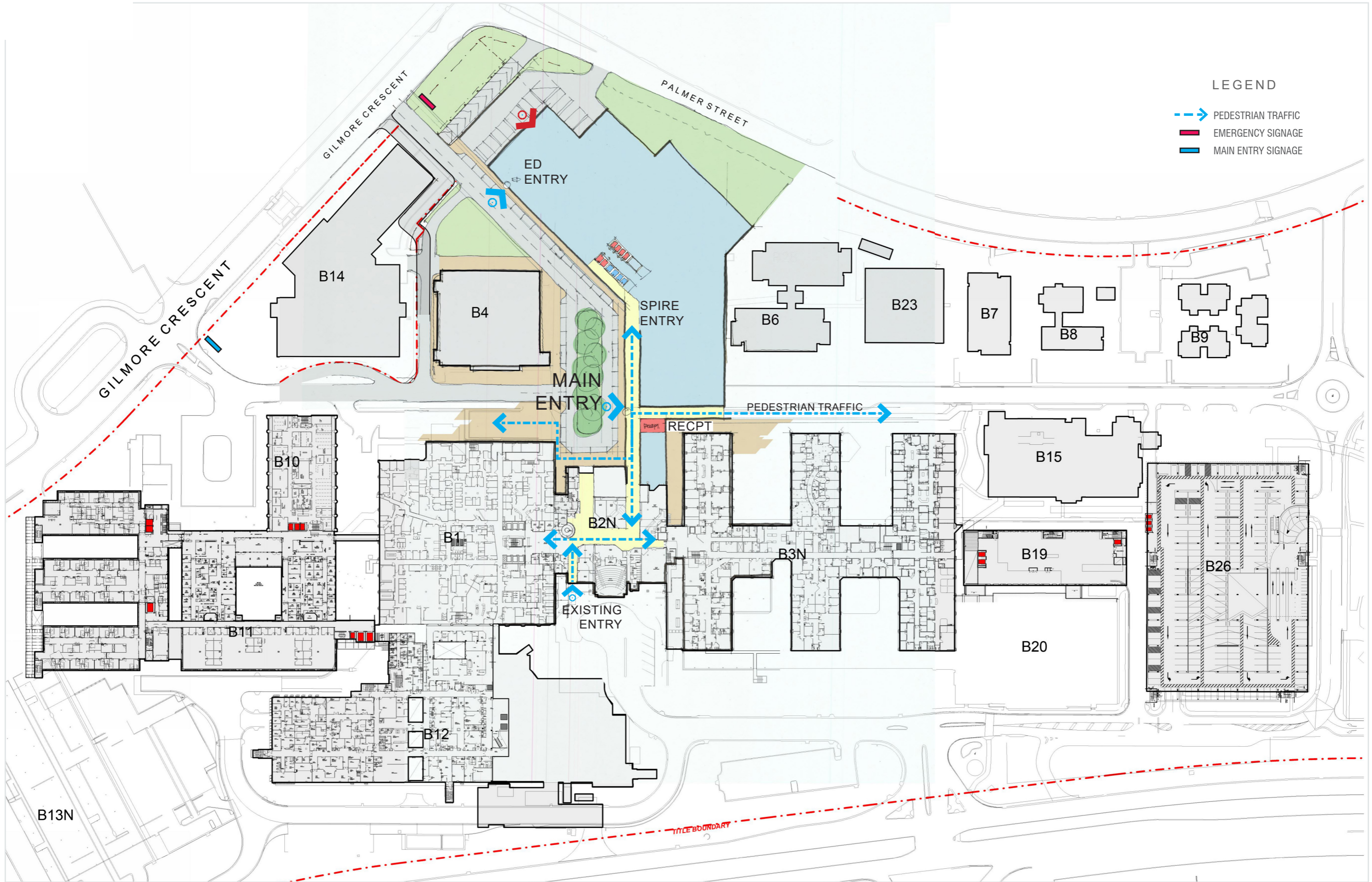


**OPTION 1 - WEST MAIN ENTRY, SOUTH EMERGENCY ENTRY**

MAIN ENTRY TO SPIRE CONNECTION - REFERENCE IMAGES



## OPTION 2 - HOSPITAL ROAD MAIN ENTRY, NORTH EMERGENCY ENTRY

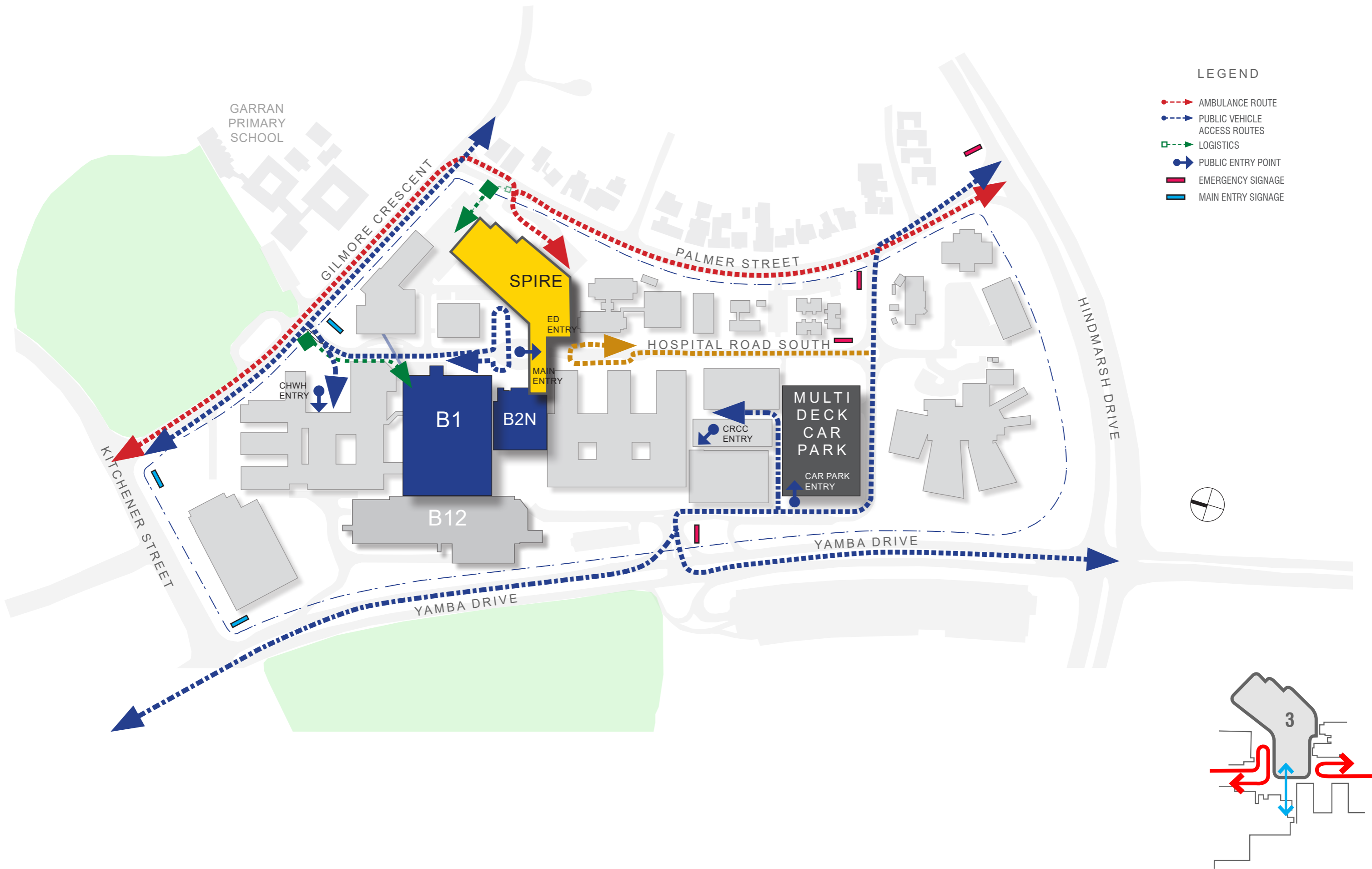


## OPTION 2 - HOSPITAL ROAD MAIN ENTRY, NORTH EMERGENCY ENTRY

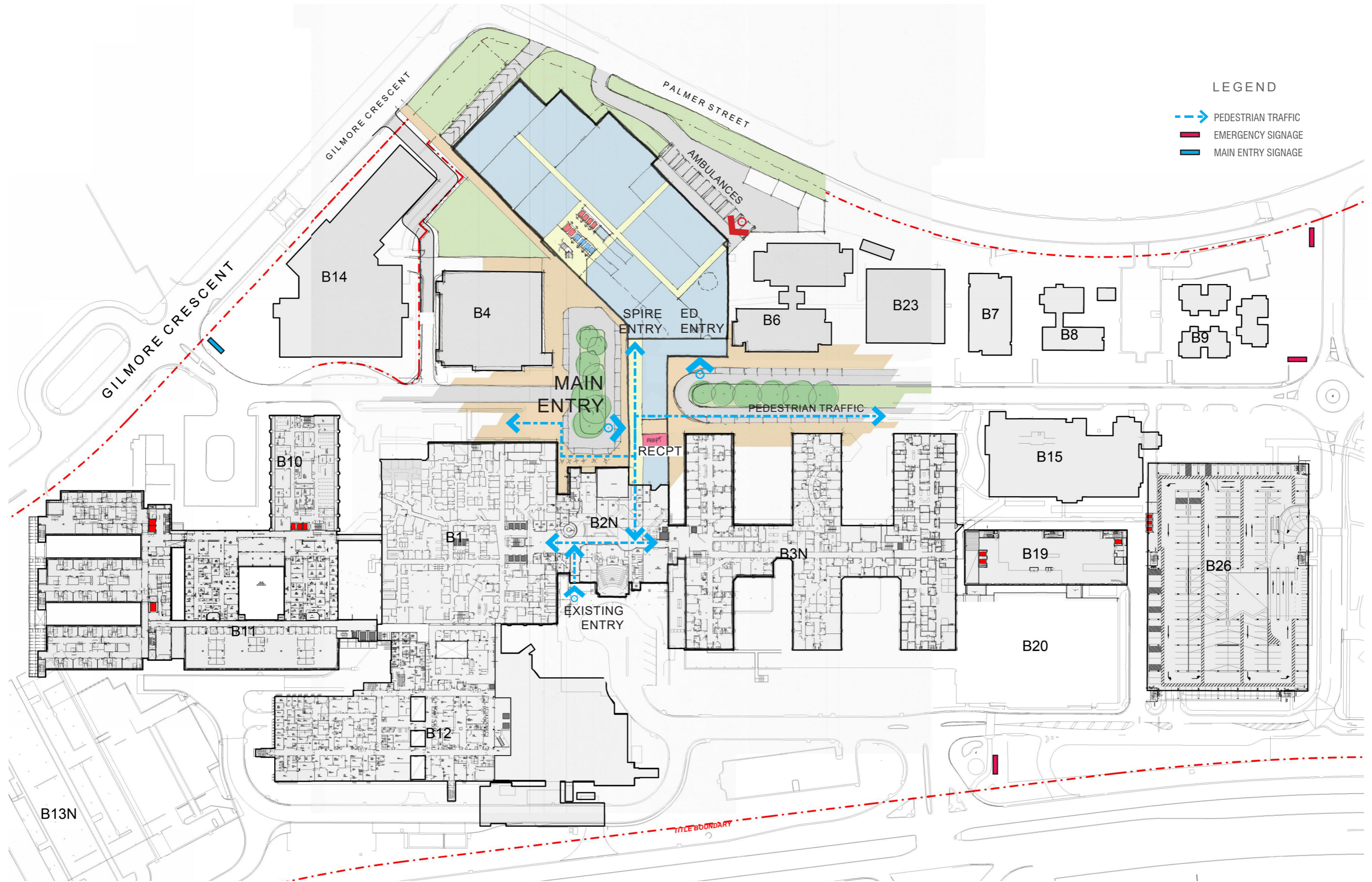
LEVEL 2 FLOOR PLAN

SPIRE | Project No. 10450





### OPTION 3 - HOSPITAL ROAD MAIN ENTRY, SOUTH EMERGENCY ENTRY



### OPTION 3 - HOSPITAL ROAD MAIN ENTRY, SOUTH EMERGENCY ENTRY

LEVEL 2 FLOOR PLAN

SPIRE | Project No. 10450