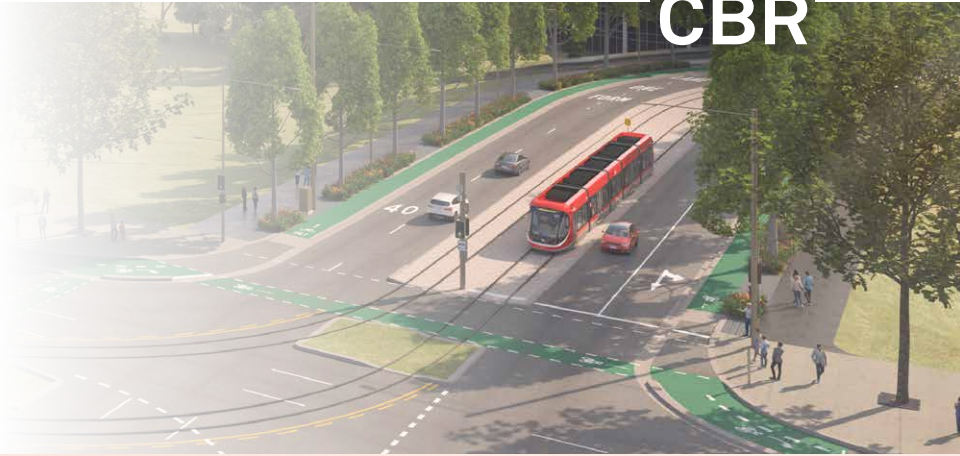


Light Rail to Woden Construction Update

Monthly Look Ahead for September 2023

**BUILT
FOR
CBR**

The ACT Government is building light rail to Woden to help make Canberra a more connected, sustainable, and vibrant city. This construction look ahead provides a summary of expected activity in the work zones for the month ahead on Raising London Circuit – an enabling project for light rail to Woden.



Main works on Raising London Circuit

Activities in September

- > New temporary road opens and earthworks continue
- > Fill placement, including heavy vehicle movements
- > Site remediation activities around London Circuit
- > Relocation of water, sewer, stormwater pipes and structures, wastewater mains, communications and electrical services
- > Potholing to identify existing service locations and removing redundant services
- > Erosion and sediment controls
- > Ongoing site preparation such as decommissioning streetlights and footpath, pavement and kerb removal



Bridge demolition

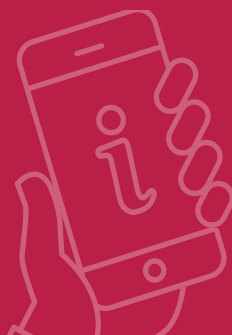
The side track/temporary road along the western side of Commonwealth Avenue, across Parkes Way, is expected to be open on **Monday 4 September**, weather and site conditions permitting. Once the side track is operational, the removal of the existing Commonwealth Avenue southbound bridge and retaining walls will begin. To demolish the bridge, the first step will be to release the tension on the girder strands (support beams) before saw cutting four times to remove the girders in the centre of the bridge. Once this is completed,

jackhammers will be used on the bridge to induce a controlled fall of the pieces, which will then be removed. Each step will be conducted with exclusion zones in place to protect the public. These exclusion zones will be contained within the work zone and will keep road users, pedestrians and cyclist protected.

The bridge demolition will generate dust. To prevent this from impacting the surrounding community, there will be continuous water suppression whilst the works are being undertaken.

Asbestos management

As the Raising London Circuit project continues, construction activities such as excavation, removal of existing structures and utility work may result in the discovery of Asbestos Containing Material (ACM). Any ACM discovered will be analysed and removed by a licensed asbestos removalist. For more information about the removal of ACM, please refer to the project fact sheet on the [Light Rail to Woden website](#).



Sign up for updates

Use this **QR code** to sign up and receive this look ahead and supplementary construction notifications direct to your inbox.

Travel impacts will be published at **Travel impacts - Built for CBR**.



Weekend day and night work

Throughout September, work on fill placement will be carried out **from 7am to 6pm on Saturdays**. In the lead up to the side track completion, work at Commonwealth Avenue and on the side track will also continue until 6pm on Saturdays. Work will be undertaken within the closure area, but you may notice an increase in trucks entering and exiting the site.

Commonwealth Avenue

The traffic switch on Commonwealth Avenue will take place on **Sunday 3 September**. At 8pm on Sunday, Commonwealth Avenue will be closed, and traffic will be diverted (see traffic impacts map for diversion routes). The new traffic route on the side track will be opened at 6am on **Monday 4 September**. If the switch is unable to take place on this night, it will take place the following week.

Edinburgh Avenue

To undertake stormwater work, the intersection of Edinburgh Avenue and London Circuit will be partially closed from **6pm Friday 22 September until 8am Monday 25 September**. If site or weather conditions prevent work from being completed over this weekend, work will be carried out from 29 September until 2 October.

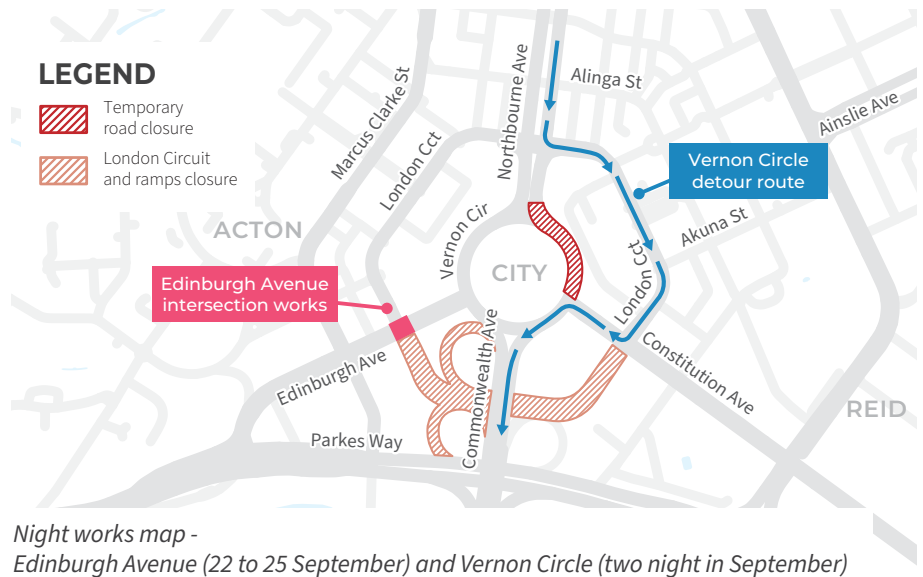
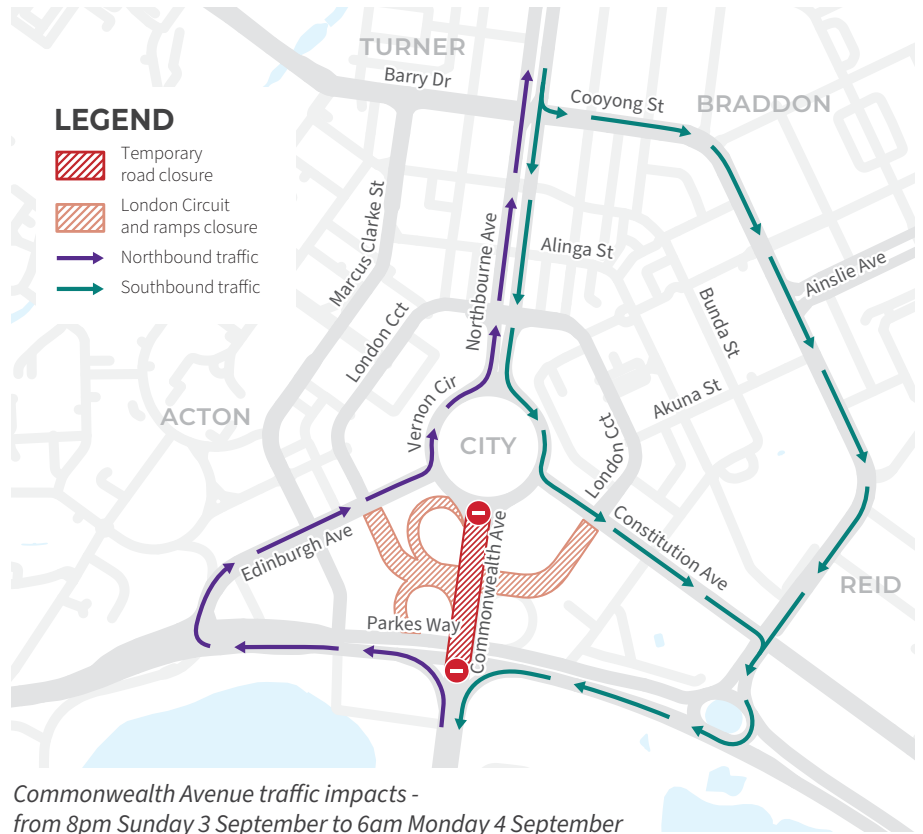
Works will be carried out during the total duration of the shutdown, including overnight. The existing pavement will be removed, the area excavated, and installations carried out. Once this is complete the area will be reinstated.

During this time, the southbound lane of London Circuit will be closed from Gordon Street. Edinburgh Avenue will also be closed from Vernon Circle to London Circuit. Detours will be in place and access to the QT Hotel will be maintained.

Road users who would usually turn left on Edinburgh Avenue from Vernon Circle will need to continue on Vernon Circle, turn left on London Circuit, then use University Avenue and Marcus Clarke Street to reach Edinburgh Avenue (see night works map).

Vernon Circle

Vernon Circle southbound, off Northbourne Avenue, will be partially closed for two nights from **6pm to 6am in September** to undertake asphaltting works. Detours will be in place while this work is undertaken (see night works map for detour).



Other works

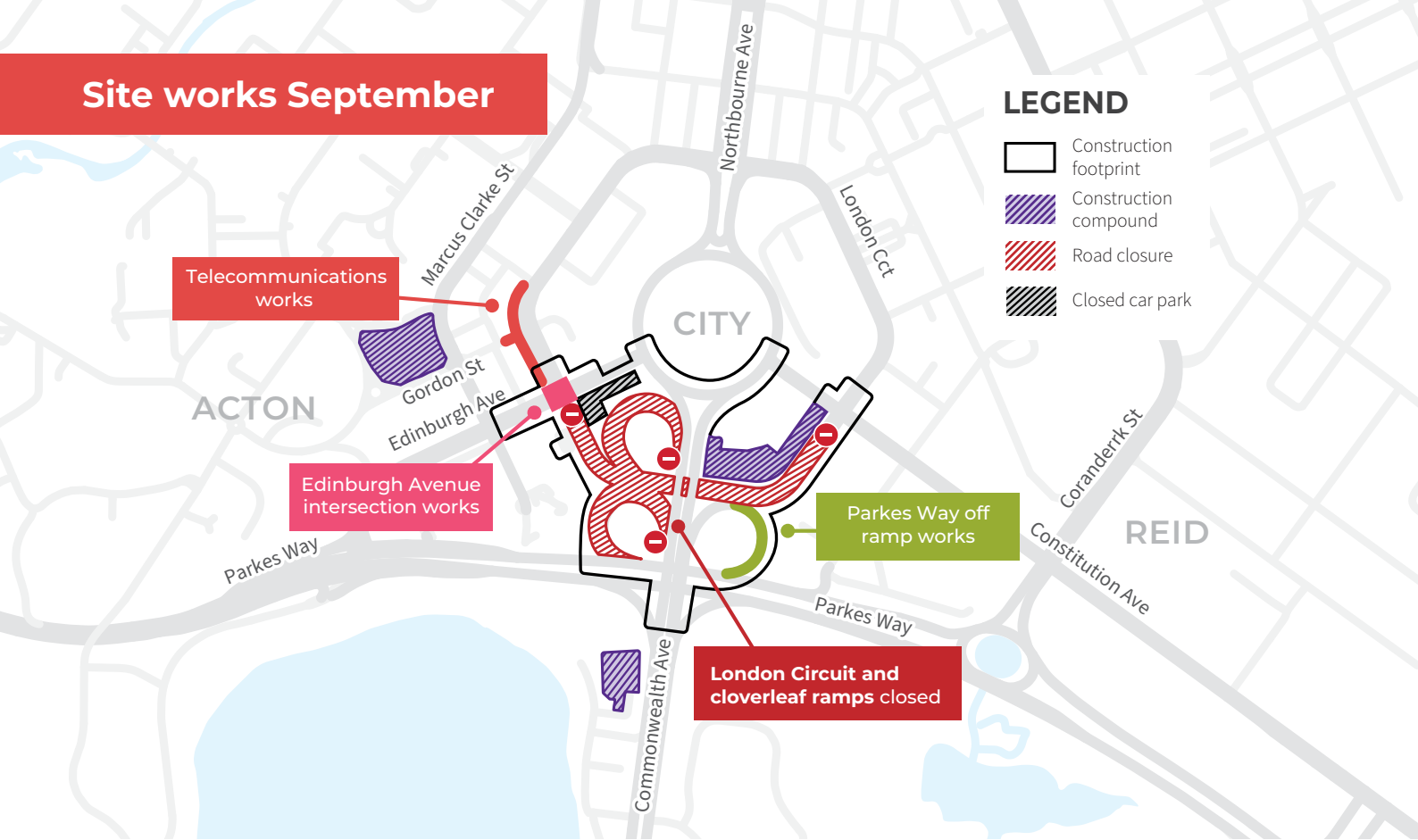
Each week, one night of maintenance work will be carried out on the Commonwealth Avenue side track throughout September. The side track will remain open, but there will be lane closures and traffic control in place during this work.

Upkeep of landscaping at Vernon Circle will take place between **7am and 6pm, two Saturdays** in September. During this work there may be lane closures and traffic control in place around the area.

Graffiti removal and fencing maintenance will be done around the site between **6pm and 7am, Monday to Friday and 6am and 6pm on Saturdays**.

Other night works may need to take place in September. We will publish notifications on act.gov.au/ligtrailtowoden to let you know when these works will take place.

Site works September



Overall project works in September

Parkes Way

The Parkes Way South-East off ramp to Commonwealth Avenue will be closed from **10am to 2pm each day from Tuesday 5 September to Friday 8 September**. This will allow for work to be safely undertaken in this area. Parkes Way will remain open during this work. There will be a detour in place for traffic that would use the off ramp. Works may be pushed to the following week if there is bad weather.

At other times during September, there will be shoulder closures of the Parkes Way South-East off ramp during standard construction hours. The off-ramp will remain open, but traffic control will in place while work is being undertaken. Please follow all traffic signs and directions while travelling in the area and reduce your travel speed accordingly.

Early works – telecommunications work

Work will continue to reinstate the area following telecommunications trenching and conduit installation along London Circuit, on Farrell Place and on Gordon Street.

Edinburgh Avenue and London Circuit intersection

Work to modify the intersection of Edinburgh Avenue and London Circuit is required as part of the London Circuit closure.

Edinburgh Avenue has been reduced to one lane westbound between London Circuit and Marcus Clarke Street. There will be traffic changes, long-term footpath closures, works areas and barriers in place.

Parking bays on the northern side of Edinburgh Avenue (adjacent to the Metropolitan Building) have also been removed. Work will be conducted for utility investigation and installation, including the installation of electrical infrastructure along Edinburgh Avenue (between London Circuit and Marcus Clarke Street).

Where traffic changes are required, traffic and pedestrian detours may be implemented. There will always be one lane in and out open to ensure local access, including access to the QT Hotel. Pedestrian access around the area will also always be maintained.



To speak to someone in a language other than English telephone the Telephone Interpreter Service (TIS) **13 14 50**. It operates 24 hours a day, seven days a week.

Contact Us

Produced by **Major Projects Canberra** | September 2023

@ lightrailtowoden@act.gov.au

act.gov.au/lightrailtowoden

1800 956 409