

# Census of ACT public schools

## August 2024

This publication provides information on students enrolled in Canberra public schools at 2 August 2024

**Release date: 19 December 2024**

## Executive Summary

This publication presents the results from the Canberra public school census conducted on Friday 2 August 2024.

### Student enrolments by level of schooling

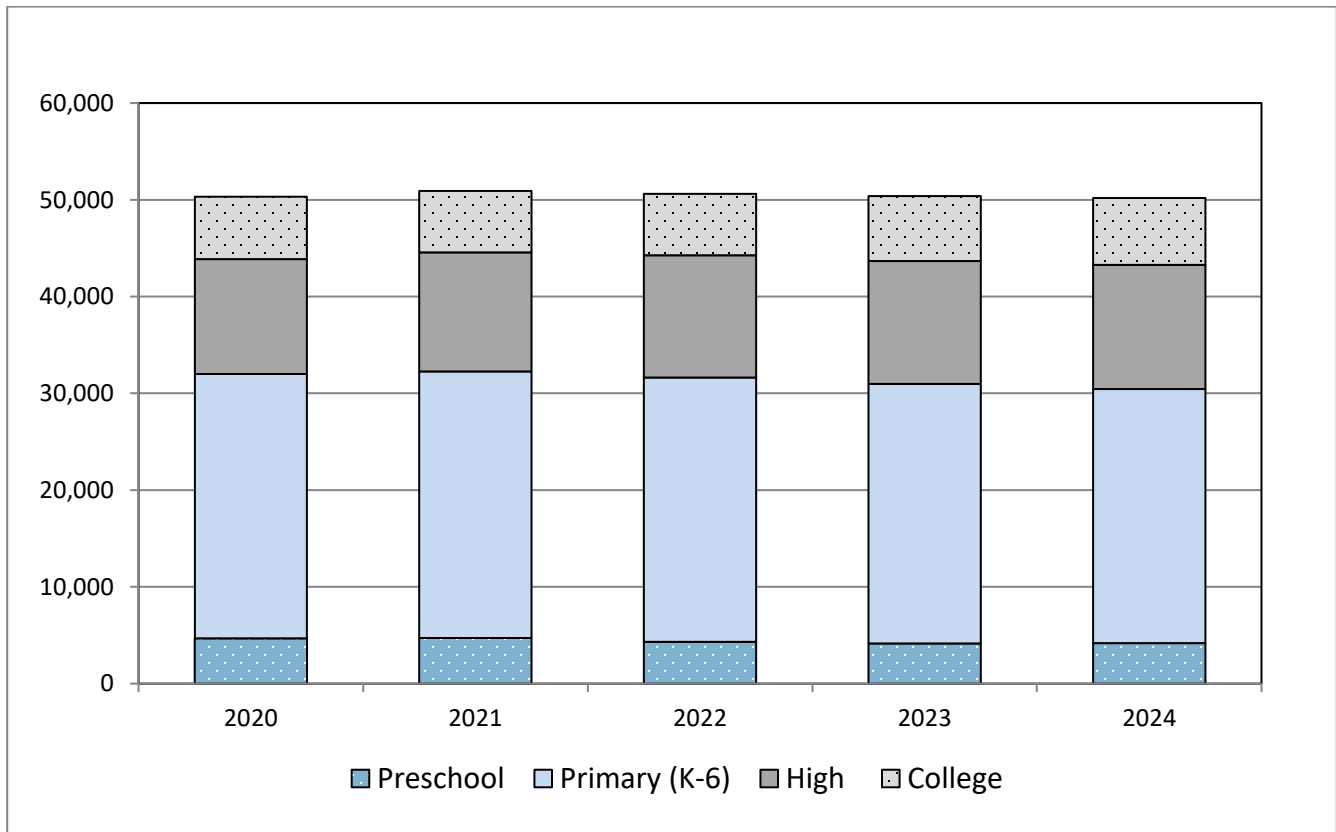
At August 2024 census, there were 50,196 enrolments in Canberra public schools. This represented a decrease of 189 enrolments (0.4%) since August 2023 (Table 1 and Figure 1). From August 2020 to August 2024, enrolments decreased by 135 students (0.3%).

Between August 2021 and August 2024, there was a small steady decrease in enrolments of around 0.5 percent annually (Table 1 and Figure 1). This is partly explained by a change in the annual rate of growth in the estimated resident population (ERP) for school aged children from around two percent in previous years to less than 0.5 percent since 2021 (Australian Bureau of Statistics (ABS), 2024).

Enrolments at the primary school level (K-6) fell slightly (by 2.0%) between 2023 and 2024, similar to the decrease between 2022 and 2023 (1.9%).

The most notable change in enrolment growth was at the college level, where enrolments increased by 214 students (3.2%) compared with August 2023. This rate of growth was similar to that reported for the public college level between February 2023 and February 2024 (2.7%).

**Figure 1: Enrolments by level of schooling, 2020 to 2024**



At the 2024 August school census there were:

- 30,441 primary school level enrolments. This represents a decrease of 526 enrolments (1.7%) since August 2023.
  - preschool enrolments increased by 14 students (0.3%) to 4,183 students
  - kindergarten to year 6 enrolments decreased by 540 students (2.0%) to 26,258 students.
- 12,841 high school level enrolments, an increase of 123 enrolments (1.0%) from August 2023 to August 2024.
- 6,914 college level enrolments, an increase of 214 enrolments (3.2%) from August 2023 to August 2024.

### Aboriginal and Torres Strait Islander students

At the 2024 August school census there were:

- 2,385 Aboriginal and Torres Strait Islander children and young people enrolled, representing 4.8 percent of total enrolments (Table 2 and Table 5). This was an increase of 184 enrolments (8.4%) compared with August 2023, including an increase of 67 preschool enrolments and 54 primary school level (kindergarten to year 6) enrolments.
- 124 students enrolled in Koori preschool programs; including 71 children who attended both Koori and universal preschool programs (reported as two enrolment episodes).
- an additional 29 high school level and 34 college level enrolments compared with August 2023.

### Students enrolled in disability education programs

At August 2024 census, there were 2,981 enrolments (Table 3), representing 5.9 percent of all enrolments, accessing disability education programs at either mainstream or specialist public schools. This was an increase of 52 enrolments (1.8%) since August 2023 and an increase of 334 enrolments (12.6%) since August 2020.

### Student enrolments by gender and year level

There were proportionally more male (51.9%) than female (47.6%) enrolments (Table 4). This general trend was consistent across all academic year levels, with the greatest proportional difference being at the high school level where 52.9% were male and 46.5% were female.

### Non-school education

It is recognised that there are alternative educational pathways for students to undertake school level courses other than by attending an ACT public or non-government school. At August 2024, 590 children and young people were home educated in the ACT, an increase of 71 students (13.7%) since August 2023. A further 114 students who were of school age undertook school equivalent courses at the Canberra Institute of Technology, a decrease of 10 students (8.1%) since August 2023.

In addition, there were 25 ACT students enrolled in the NSW Finigan School of Distance Education.

## Tables

**Table 1: Enrolments by level of schooling, 2020 to 2024<sup>1</sup>**

Level of schooling	2020	2021	2022	2023	2024
Preschool	4,679	4,708	4,311	4,169	4,183
<i>Annual growth (%)</i>		0.6	-8.4	-3.3	0.3
Primary (K-6)	27,321	27,541	27,312	26,798	26,258
<i>Annual growth (%)</i>		0.8	-0.8	-1.9	-2.0
High	11,889	12,308	12,641	12,718	12,841
<i>Annual growth (%)</i>		3.5	2.7	0.6	1.0
College	6,442	6,375	6,351	6,700	6,914
<i>Annual growth (%)</i>		-1.0	-0.4	5.5	3.2
<b>Total all schools</b>	<b>50,331</b>	<b>50,932</b>	<b>50,615</b>	<b>50,385</b>	<b>50,196</b>
<b>Overall Annual growth (%)</b>		<b>1.2</b>	<b>-0.6</b>	<b>-0.5</b>	<b>-0.4</b>

1. Includes a small number of students who attended two schools who are counted as two enrolment episodes in the census.

**Table 2: Enrolments of Aboriginal and Torres Strait Islander students by level of schooling, 2020 to 2024<sup>1</sup>**

Level of schooling	2020	2021	2022	2023	2024
Preschool	278	321	258	299	366
<i>Annual growth (%)</i>		15.5	-19.6	15.9	22.4
Primary (K-6)	1,063	1,131	1,119	1,123	1,177
<i>Annual growth (%)</i>		6.4	-1.1	0.4	4.8
High	496	497	517	548	577
<i>Annual growth (%)</i>		0.2	4.0	6.0	5.3
College	255	255	227	231	265
<i>Annual growth (%)</i>		0.0	-11.0	1.8	14.7
<b>Total all schools</b>	<b>2,092</b>	<b>2,204</b>	<b>2,121</b>	<b>2,201</b>	<b>2,385</b>
<b>Overall Annual growth (%)</b>		<b>5.4</b>	<b>-3.8</b>	<b>3.8</b>	<b>8.4</b>

1. Includes a small number of students who attended two schools who are counted as two enrolment episodes in the census.

**Table 3: Students enrolled in disability education programs by level of schooling, 2020 to 2024<sup>1,2</sup>**

Level of schooling	2020	2021	2022	2023	2024
Primary (K-6)	1,563	1,656	1,586	1,592	1,577
<i>Annual growth (%)</i>		6.0	-4.2	0.4	-0.9
High	770	869	946	927	993
<i>Annual growth (%)</i>		12.9	8.9	-2.0	7.1
College	314	354	377	410	411
<i>Annual growth (%)</i>		12.7	6.5	8.8	0.2
<b>Total all schools</b>	<b>2,647</b>	<b>2,879</b>	<b>2,909</b>	<b>2,929</b>	<b>2,981</b>
<b>Overall Annual growth (%)</b>		<b>8.8</b>	<b>1.0</b>	<b>0.7</b>	<b>1.8</b>

1. Includes a small number of students who attended two schools who are counted as two enrolment episodes in the census.

2. Includes students who meet the ACT Student Disability Criteria, including those students not formally assessed at the time of the census.

**Table 4: Enrolments by academic year and gender, 2024<sup>1,2,3</sup>**

Level of schooling	Males	Females	Non-binary/ Not stated	Total Persons
<b>Primary</b>				
Preschool	2,171	2,012	n.p.	4,183
Kindergarten	1,863	1,771	8	3,642
Year 1	1,937	1,753	n.p.	3,690
Year 2	2,102	1,853	n.p.	3,955
Year 3	1,943	1,799	n.p.	3,742
Year 4	2,046	1,801	n.p.	3,847
Year 5	1,882	1,815	n.p.	3,697
Year 6	1,909	1,768	8	3,685
<b>Subtotal primary</b>	<b>15,843</b>	<b>14,562</b>	<b>36</b>	<b>30,441</b>
<b>High</b>				
Year 7	1,595	1,489	14	3,098
Year 8	1,681	1,458	15	3,154
Year 9	1,767	1,502	27	3,296
Year 10	1,755	1,518	20	3,293
<b>Subtotal high</b>	<b>6,798</b>	<b>5,967</b>	<b>76</b>	<b>12,841</b>
<b>College</b>				
Year 11	1,832	1,789	69	3,690
Year 12	1,575	1,513	49	3,137
Older	6	81	n.p.	87
<b>Subtotal college</b>	<b>3,413</b>	<b>3,383</b>	<b>118</b>	<b>6,914</b>
<b>Total all schools levels</b>	<b>26,054</b>	<b>23,911</b>	<b>230</b>	<b>50,196</b>

1. Includes a small number of students who attended two schools who are counted as two enrolment episodes in the census.

2. Non-binary/Not stated includes students who identify as non-binary or a different term, plus a small number of students whose gender was not stated.

3. Small random adjustments have been made to the male and female cell values for preschool and year 1 - 5 to prevent the release of identifiable non-binary statistics. As a result, the male and female sub-totals for primary do not equal the sum of the corresponding preschool to year 6 cell values.

n.p. - not published due to the small number of enrolments in cell.

**Table 5: Enrolments of Aboriginal and Torres Strait Islander students by academic year and gender, 2024<sup>1,2,3</sup>**

Level of schooling	Males	Females	Non-binary/ Not stated	Total
<b>Primary</b>				
Preschool	187	179	n.p.	366
Kindergarten	83	77	n.p.	160
Year 1	92	73	n.p.	165
Year 2	95	90	n.p.	185
Year 3	76	70	n.p.	146
Year 4	99	86	n.p.	185
Year 5	84	79	n.p.	163
Year 6	99	74	n.p.	173
<b>Subtotal primary</b>	<b>815</b>	<b>728</b>	<b>n.p.</b>	<b>1,543</b>
<b>High</b>				
Year 7	65	68	n.p.	133
Year 8	79	78	n.p.	157
Year 9	83	80	n.p.	163
Year 10	69	55	n.p.	124
<b>Subtotal high</b>	<b>296</b>	<b>281</b>	<b>n.p.</b>	<b>577</b>
<b>College</b>				
Year 11	80	64	n.p.	144
Year 12 (& Older)	57	64	n.p.	121
<b>Subtotal college</b>	<b>137</b>	<b>128</b>	<b>n.p.</b>	<b>265</b>
<b>Total all schools levels</b>	<b>1,248</b>	<b>1,137</b>	<b>15</b>	<b>2,385</b>

1. Includes a small number of students who attended two schools who are counted as two enrolment episodes in the census.

2. Non-binary/Not stated includes students who identify as non-binary or a different term, plus a small number of students whose gender was not stated.

3. Small random adjustments have been made to the male and female cell values for preschool to year 12 to prevent the release of identifiable non-binary statistics. As a result, the male and female totals do not equal the sum of the corresponding preschool to year 12 cell values.

n.p. - not published due to the small number of enrolments in cell.

## Student enrolments by network, school and year level

The North/Gungahlin network (31.5%) had the highest proportion of primary school level enrolments followed by South/Weston (26.8%), Belconnen (25.0%), and Tuggeranong (16.7%).

**Table 6: Number of primary school level enrolments by year level, network and school, 2024<sup>1</sup>**

School	P	K	Year 1	Year 2	Year 3	Year 4	Year 5	Year 6	Total
<b>Belconnen Network</b>									
Aranda Primary School	63	60	69	84	61	87	81	72	577
Charnwood-Dunlop School	75	40	41	39	48	51	39	40	373
Charnwood-Dunlop – Belconnen IEC	-	8	3	3	3	2	3	3	25
Cranleigh School	5	9	20	21	12	13	8	10	98
Evatt Primary School	35	47	41	42	31	52	39	41	328
Florey Primary School	68	54	57	61	67	55	54	49	465
Fraser Primary School	64	56	59	68	71	79	76	77	550
Giralang Primary School	44	34	33	36	49	49	39	36	320
Hawker Primary School	43	42	39	48	46	53	49	50	370
Kaleen Primary School	64	46	58	65	53	65	65	67	483
Kingsford Smith School	65	44	53	41	52	40	52	57	404
Kingsford Smith Koori Preschool	18	-	-	-	-	-	-	-	18
Latham Primary School	44	40	39	60	44	52	48	56	383
Macgregor Primary School	88	77	88	75	79	85	87	57	636
Macquarie Primary School	44	26	43	51	37	32	46	39	318
Maribyrnong Primary School	56	68	89	77	59	60	83	67	559
Miles Franklin Primary School	65	47	56	62	72	58	67	66	493
Mount Rogers Primary School	80	68	68	69	60	68	71	55	539
Southern Cross ECS	88	45	35	33	-	-	-	-	201
Weetangera Primary School	52	35	54	60	70	67	57	69	464
<b>Subtotal Belconnen</b>	<b>1,061</b>	<b>846</b>	<b>945</b>	<b>995</b>	<b>914</b>	<b>968</b>	<b>964</b>	<b>911</b>	<b>7,604</b>

**Table 6: Number of primary school level enrolments by year level, network and school, 2024<sup>1</sup>**  
(continued)

School	P	K	Year 1	Year 2	Year 3	Year 4	Year 5	Year 6	Total
<b>North/Gungahlin Network</b>									
Ainslie School	48	50	69	54	55	47	55	55	433
Amaroo School	86	68	83	98	112	91	137	149	824
Campbell Primary School	40	41	41	41	44	28	51	31	317
Franklin School	85	69	66	68	74	66	48	48	524
Franklin - Gungahlin IEC	-	12	4	5	4	2	1	-	28
Gold Creek School	93	84	88	81	79	90	79	76	670
Harrison School	108	105	90	128	118	138	131	133	951
Jervis Bay School	33	11	11	7	6	12	4	4	88
Lyneham Primary School	61	54	60	63	72	82	77	78	547
Majura Primary School	88	96	101	101	122	109	95	106	818
Margaret Hendry School	145	102	83	83	91	82	59	48	693
Neville Bonner Primary School	104	87	83	103	73	104	104	97	755
Ngunnawal Primary School	110	83	85	105	101	81	76	75	716
Ngunnawal Koori Preschool	32	-	-	-	-	-	-	-	32
North Ainslie Primary School	60	60	71	59	74	90	82	83	579
North Ainslie - Northside IEC	-	4	2	3	2	-	1	1	13
O'Connor Cooperative School	22	19	20	18	-	-	-	-	79
Palmerston District Primary School	109	101	105	86	102	94	88	79	764
Throsby School	83	69	55	48	43	28	26	17	369
Turner School	29	47	39	54	54	50	57	68	398
<b>Subtotal North/Gungahlin</b>	<b>1,336</b>	<b>1,162</b>	<b>1,156</b>	<b>1,205</b>	<b>1,226</b>	<b>1,194</b>	<b>1,171</b>	<b>1,148</b>	<b>9,598</b>
<b>South/Weston Network</b>									
Arawang Primary School	66	62	58	79	63	66	56	77	527
Chapman Primary School	89	72	79	85	77	78	63	67	610
Charles Weston School	86	55	75	80	56	71	70	53	546
Curtin Primary School	63	45	61	52	65	55	61	71	473
Duffy Primary School	44	54	47	64	49	50	55	53	416
Evelyn Scott School	87	79	78	71	47	60	36	44	502
Farrer Primary School	42	39	39	41	36	41	22	43	303
Forrest Primary School	43	59	53	64	65	82	72	81	519
Garran Primary School	46	70	77	102	86	97	86	85	649
Hughes Primary School	43	40	49	63	65	68	60	54	442
Hughes - Southside IEC	-	15	3	7	3	2	3	1	34
Lyons ECS	43	45	34	20	-	-	-	-	142
Malkara School	9	10	14	5	10	5	9	9	71
Mawson Primary School	67	73	85	76	65	63	60	59	548
Narrabundah ECS	58	27	12	12	-	-	-	-	109
Narrabundah Koori Preschool	27	-	-	-	-	-	-	-	27
Red Hill Primary School	89	81	87	113	121	112	113	111	827
Telopea Park School	-	81	84	80	81	80	78	79	563
Torrens Primary School	74	59	47	42	64	60	64	61	471
Yarralumla Primary School	52	43	41	43	51	54	43	47	374
<b>Subtotal South/Weston</b>	<b>1,028</b>	<b>1,009</b>	<b>1,023</b>	<b>1,099</b>	<b>1,004</b>	<b>1,044</b>	<b>951</b>	<b>995</b>	<b>8,153</b>

**Table 6: Number of primary school level enrolments by year level, network and school, 2024<sup>1</sup>**  
(continued)

School	P	K	Year 1	Year 2	Year 3	Year 4	Year 5	Year 6	Total
<b><i>Tuggeranong Network</i></b>									
Bonython Primary School	40	46	47	56	55	46	55	64	409
Calwell Primary School	33	35	28	26	35	29	30	31	247
Caroline Chisholm School	22	22	30	25	23	42	29	29	222
Charles Conder Primary School	103	68	52	58	66	72	56	76	551
Fadden Primary School	37	37	32	37	35	37	33	22	270
Gilmore Primary School	16	22	26	11	20	20	12	19	146
Gordon Primary School	69	54	51	74	69	61	57	55	490
Gowrie Primary School	33	40	33	35	31	35	38	35	280
Isabella Plains ECS	54	25	26	21	-	-	-	-	126
Monash Primary School	64	63	62	71	50	61	62	54	487
Namadgi School	50	49	29	53	54	62	58	57	412
Richardson Primary School	31	20	17	27	20	15	21	20	171
Richardson Koori Preschool	27	-	-	-	-	-	-	-	27
Taylor Primary School	44	39	42	33	39	41	49	39	326
Theodore Primary School	30	21	22	44	26	30	36	33	242
Wanniassa Hills Primary School	44	50	44	58	53	56	46	68	419
Wanniassa Hills - Tuggeranong IEC	-	1	1	0	1	2	-	2	7
Wanniassa School	41	33	24	27	21	32	29	27	234
Wanniassa Koori Preschool	20	-	-	-	-	-	-	-	20
<b>Subtotal Tuggeranong</b>	<b>758</b>	<b>625</b>	<b>566</b>	<b>656</b>	<b>598</b>	<b>641</b>	<b>611</b>	<b>631</b>	<b>5,086</b>
<b>Total primary school level</b>	<b>4,183</b>	<b>3,642</b>	<b>3,690</b>	<b>3,955</b>	<b>3,742</b>	<b>3,847</b>	<b>3,697</b>	<b>3,685</b>	<b>30,441</b>

1. Includes a small number of students who attended two schools who are counted as two enrolment episodes in the census.

IEC – Intensive English Centre.

ECS – Early Childhood School.

- Nil.

The North/Gungahlin network (31.0 %) also had the highest proportion of high school level enrolments followed by South/Weston (29.2%), Belconnen (24.9%), and Tuggeranong (14.9%).

**Table 7: Number of high school level enrolments by year level, network and school, 2024<sup>1</sup>**

School	Year 7	Year 8	Year 9	Year 10	Total
<b>Belconnen Network</b>					
Belconnen High School	153	152	161	151	617
Canberra High School	203	216	230	225	874
Kingsford Smith School	103	106	131	115	455
Melba Copland Secondary School	155	157	197	174	683
UC High School Kaleen	142	150	146	129	567
<b>Subtotal Belconnen</b>	<b>756</b>	<b>781</b>	<b>865</b>	<b>794</b>	<b>3,196</b>
<b>North/Gungahlin Network</b>					
Amaroo School	238	266	245	230	979
Black Mountain School	12	25	22	25	84
Campbell High School	79	116	116	156	467
Dickson - Secondary IEC	7	9	7	13	36
Gold Creek School	175	177	175	158	685
Gungahlin College	-	-	-	14	14
Harrison School	122	153	156	147	578
Lyneham High School	262	272	257	261	1,052
Shirley Smith High School	80	-	-	-	80
<b>Subtotal North/Gungahlin</b>	<b>975</b>	<b>1,018</b>	<b>978</b>	<b>1,004</b>	<b>3,975</b>
<b>South/Weston Network</b>					
Alfred Deakin High School	218	191	247	213	869
Evelyn Scott School	63	45	36	25	169
Melrose High School	191	182	210	222	805
Mount Stromlo High School	187	199	234	215	835
Telopea Park School	245	258	243	262	1,008
The Woden School	15	17	22	14	68
<b>Subtotal South/Weston</b>	<b>919</b>	<b>892</b>	<b>992</b>	<b>951</b>	<b>3,754</b>
<b>Tuggeranong Network</b>					
Calwell High School	76	90	92	99	357
Caroline Chisholm School	118	87	95	102	402
Erindale College	-	-	-	90	90
Lanyon High School	109	143	132	107	491
Namadgi School	64	62	65	68	259
Wanniassa School	81	81	77	78	317
<b>Subtotal Tuggeranong</b>	<b>448</b>	<b>463</b>	<b>461</b>	<b>544</b>	<b>1,916</b>
<b>Total high school level</b>	<b>3,098</b>	<b>3,154</b>	<b>3,296</b>	<b>3,293</b>	<b>12, 841</b>

1. Includes a small number of students who attended two schools who are counted as two enrolment episodes in the census.

IEC - Intensive English Centre.

UC - University of Canberra.

- Nil.

The South/Weston network (31.4%) had the highest proportion of college level enrolments followed by North/Gungahlin (26.9%), Belconnen (22.7%), and Tuggeranong (18.9%).

**Table 8: Number of college level enrolments by year level, network and school, 2024<sup>1</sup>**

School	Year 11	Year 12	Older	Total
<b>Belconnen Network</b>				
Hawker College	314	298	-	612
Melba Copland Secondary School	129	71	-	200
UC Senior Secondary College Lake Ginninderra	436	321	-	757
<b>Subtotal Belconnen</b>	<b>879</b>	<b>690</b>	<b>-</b>	<b>1,569</b>
<b>North/Gungahlin Network</b>				
Black Mountain School	14	18	-	32
Dickson College	414	348	-	762
Dickson College IEC	10	0	-	10
Gungahlin College	548	510	-	1,058
<b>Subtotal North/Gungahlin</b>	<b>986</b>	<b>876</b>	<b>-</b>	<b>1,862</b>
<b>South/Weston Network</b>				
The Canberra College	566	494	-	1,060
The Canberra College - CCCares	15	7	87	109
Narrabundah College	517	460	-	977
The Woden School	13	15	-	28
<b>Subtotal South/Weston</b>	<b>1,111</b>	<b>976</b>	<b>87</b>	<b>2,174</b>
<b>Tuggeranong Network</b>				
Erindale College	415	296	-	711
Lake Tuggeranong College	299	299	-	598
<b>Subtotal Tuggeranong</b>	<b>714</b>	<b>595</b>	<b>-</b>	<b>1,309</b>
<b>Total college level</b>	<b>3,690</b>	<b>3,137</b>	<b>87</b>	<b>6,914</b>

1. Includes a small number of students who attended two schools who are counted as two enrolment episodes in the census.

IEC - Intensive English Centre.

UC – University of Canberra.

- Nil.

## Students to teacher ratio

The students to teacher ratio takes account of all teaching resources allocated to support students. Students to teacher ratios are calculated by dividing the total Full-Time Equivalent (FTE) students by the FTE teaching staff. Overall, the students to teacher ratio for the ACT public school system was 13.0.

**Table 9: Students to teacher ratio by school, 2024<sup>1</sup>**

School Name	Teaching staff FTE (excl preschool enrolments)	Student FTE (excl preschool enrolments)	Students to teacher ratio
Ainslie School	29.9	385.0	12.9
Alfred Deakin High School	60.9	869.0	14.3
Amaroo School	125.5	1,715.2	13.7
Aranda Primary School	34.0	514.0	15.1
Arawang Primary School	29.5	460.2	15.6
Belconnen High School	45.1	617.0	13.7
Black Mountain School	31.1	115.4	3.7
Bonython Primary School	25.4	369.0	14.5
Calwell High School	31.8	357.0	11.2
Calwell Primary School	18.6	214.0	11.5
Campbell High School	44.6	466.1	10.5
Campbell Primary School	20.4	277.0	13.6
Canberra High School	64.2	873.8	13.6
Caroline Chisholm School	47.5	601.4	12.7
Chapman Primary School	35.8	521.0	14.6
Charles Conder Primary School	30.2	448.0	14.8
Charles Weston School	37.3	460.0	12.3
Charnwood-Dunlop School	30.4	322.4	10.6
Cranleigh School	20.1	88.7	4.4
Curtin Primary School	25.4	409.2	16.1
Dickson College	60.4	808.0	13.4
Duffy Primary School	27.1	372.0	13.7
Erindale College	58.0	783.0	13.5
Evatt Primary School	23.6	292.6	12.4
Evelyn Scott School	50.4	583.2	11.6
Fadden Primary School	19.2	232.5	12.1
Farrer Primary School	22.2	261.0	11.7
Florey Primary School	28.2	397.0	14.1
Forrest Primary School	27.7	474.7	17.2
Franklin School	35.7	467.0	13.1
Fraser Primary School	33.2	485.7	14.6
Garran Primary School	34.7	603.0	17.4
Gilmore Primary School	12.0	130.0	10.8

**Table 9: Students to teacher ratio by school, 2024<sup>1</sup> (continued)**

School Name	Teaching staff FTE (excl preschool staff)	Student FTE (excl preschool enrolments)	Students to teacher ratio
Giralang Primary School	22.1	273.8	12.4
Gold Creek School	97.3	1,260.4	13.0
Gordon Primary School	32.4	420.4	13.0
Gowrie Primary School	20.6	247.0	12.0
Gungahlin College	78.9	1,037.4	13.1
Harrison School	99.4	1,419.1	14.3
Hawker College	44.2	611.2	13.8
Hawker Primary School	22.7	327.0	14.4
Hughes Primary School	26.6	433.0	16.3
Isabella Plains ECS	10.5	72.0	6.9
Jervis Bay School	10.4	55.0	5.3
Kaleen Primary School	26.5	419.0	15.8
Kingsford Smith School	76.0	793.2	10.4
Lake Tuggeranong College	50.2	583.5	11.6
Lanyon High School	38.5	491.0	12.7
Latham Primary School	32.1	339.0	10.6
Lyneham High School	73.2	1,051.8	14.4
Lyneham Primary School	30.9	485.6	15.7
Lyons ECS	10.2	99.0	9.7
Macgregor Primary School	37.9	547.6	14.5
Macquarie Primary School	23.6	274.0	11.6
Majura Primary School	44.7	729.6	16.3
Malkara School	19.2	61.0	3.2
Margaret Hendry School	44.9	544.5	12.1
Maribyrnong Primary School	35.2	502.4	14.3
Mawson Primary School	35.0	481.0	13.7
Melba Copland Secondary School	86.5	882.9	10.2
Melrose High School	61.3	805.0	13.1
Miles Franklin Primary School	33.1	428.0	12.9
Monash Primary School	36.4	423.0	11.6
Mount Rogers Primary School	32.5	458.1	14.1
Mount Stromlo High School	61.2	834.6	13.6
Namadgi School	47.9	621.0	13.0
Narrabundah College	63.0	977.0	15.5
Narrabundah ECS	7.8	51.0	6.5
Neville Bonner Primary School	45.8	651.0	14.2
Ngunnawal Primary School	48.8	604.4	12.4
North Ainslie Primary School	34.0	532.0	15.6
O'Connor Cooperative School	7.0	57.0	8.1

**Table 9: Students to teacher ratio by school, 2024<sup>1</sup> (continued)**

School Name	Teaching staff FTE (excl preschool staff)	Student FTE (excl preschool enrolments)	Students to teacher ratio
Palmerston District Primary School	50.8	654.4	12.9
Red Hill Primary School	49.3	737.5	15.0
Richardson Primary School	15.2	139.2	9.1
Shirley Smith High School	13.4	80.0	6.0
Southern Cross ECS	11.8	112.6	9.6
Taylor Primary School	21.3	281.4	13.2
Telopea Park School	113.6	1,569.2	13.8
The Canberra College	75.5	1,169.0	15.5
The Woden School	26.4	95.0	3.6
Theodore Primary School	21.0	210.2	10.0
Throsby School	25.4	286.0	11.3
Torrens Primary School	27.9	397.0	14.2
Turner School	29.9	369.0	12.3
UC High School Kaleen	44.1	565.3	12.8
UC Senior Secondary College Lake Ginninderra	52.6	748.0	14.2
Wanniassa School	50.5	510.0	10.1
Weetangera Primary School	31.0	411.8	13.3
Yarralumla Primary School	22.7	322.0	14.2
<b>Total</b>	<b>3,537.2</b>	<b>45,896.2</b>	<b>13.0</b>

1. Excludes preschool students and preschool teaching staff.  
FTE - Full-Time Equivalent.

## Explanatory Notes

### Reference date

The 2024 August census was conducted on Friday 2 August 2024.

### Scope and coverage

The August census includes all Canberra public schools providing primary, secondary and specialist education. Jervis Bay School was included in Canberra public primary schools as the Education Directorate administers the Jervis Bay School for the Australian Government under a service agreement.

### Collection

Canberra public school census data was electronically downloaded from the Directorate's centralised administrative system.

### Student enrolments

The census included students who were officially enrolled in a school on census day and who were active in a primary, secondary or specialist education program at that school. Students who were absent without an authorised explanation for more than four continuous school weeks prior to census date were excluded.

### Primary school level

The primary school level of schooling included students from preschool to year 6, unless 'K-6' was specified. Preschool included three, four, and five-year-old children who were enrolled in a school prior to starting kindergarten. Preschool level data also included students who were attending a preschool program as an early entry student. Please note, children can be enrolled in more than one preschool program.

### High school level

The high school level of schooling is equivalent to the lower secondary level of education of the Australian Standard Classification of Education and includes students in years 7, 8, 9 and 10. A small number of year 10 students undertake early access programs at Erindale and Gungahlin Colleges.

### College level

The college level of schooling is equivalent to the senior secondary level of education of the Australian Standard Classification of Education and includes students in years 11 and 12 as well as those students defined as older. Students in public schools aged 18 years by 31 December in the year prior to the commencement of their college studies, were classified as Older (O).

## Flexible education

The census included students who were participating in Flexible Education. Flexible Education provides alternative education options across five campuses. These campuses include the Muliyan Program, the Cottage, Hospital School, Murrumbidgee School and Distance Education. Students attending Flexible Education sites were counted in the census at their mainstream school, except for the number of students who were enrolled in the NSW Finigan School of Distance Education which is listed separately in the Non-school education section on page 3.

## Introductory English Centres

Introductory English Centres (IECs) are for students who require intensive full-time English language instruction. There were five IECs in the primary sector, conducted at Charnwood-Dunlop School (Belconnen IEC), Franklin School (Gungahlin IEC), Hughes Primary School (Southside IEC), North Ainslie Primary School (Northside IEC) and Wanniasa Hills Primary School (Tuggeranong IEC). There was one IEC in the secondary sector at Dickson College (Secondary IEC).

## Students enrolled in disability education programs

The Census included students who met the ACT Student Disability Criteria. These students accessed disability education programs at either mainstream or specialist public schools.

There are four specialist schools in Canberra; Black Mountain School, Cranleigh School, Malkara School, and The Woden School. Specialist schools cater for students with a moderate to profound intellectual disability, severe Autism Spectrum Disorder or with multiple disabilities that require intensive levels of support.

## References

Australian Bureau of Statistics (2024). National, state and territory population, December 2023. Canberra, Australia: Australian Bureau of Statistics.

### © ACT Government, 2024

This publication has been produced by the ACT Education Directorate. Apart from any use permitted under the *Copyright Act 1968*, no part of this publication may be reproduced by any process without written permission. Requests should be made to the Directorate.

Comments and suggestions regarding this publication are welcomed and should be forwarded to the Directorate.

Published by: Education Directorate, ACT Government  
GPO Box 158  
Canberra City ACT 2601  
Telephone: 132 281  
Website: <https://www.education.act.gov.au>