



**ACT**  
Government

Justice and Community Safety

**ACT Corrective Services**

# **Suicide Prevention Framework**

**Easy Read version**



# What is in this guide

Acknowledgement of Country 3

---

About this plan 4

---

How we made our plan 7

---

What is in our plan 8

---

How we will know if the plan is working 16

---

Contact information 17

# Acknowledgement of Country



We acknowledge Aboriginal and Torres Strait Islander people.



Acknowledge means we understand the importance of Aboriginal and Torres Strait Islander people's:

- culture
- language
- history.

# About this plan



**ACT**  
Government

Justice and Community Safety

This plan is from ACT Corrective Services.

We are part of the ACT government.



We help to keep the community safe.

We look after prisons and run programs  
for people who do crime.



We work with people when they are in prison or  
in the community, after they have done a crime.



Some things in this plan might make you feel sad or upset.

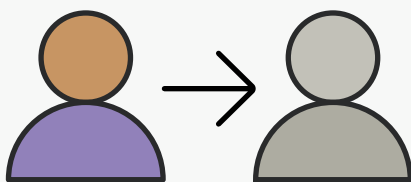


If you feel sad or upset you can talk to someone you trust. For example:

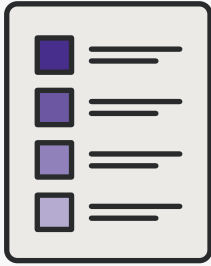
- a case manager
- a custodial officer
- Justice Health.



We wrote this plan to tell you about what we will do to help protect people to be at less risk of suicide.



Suicide is when someone ends their life.



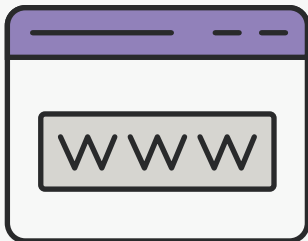
This plan is an Easy Read summary of our Suicide Prevention Framework.



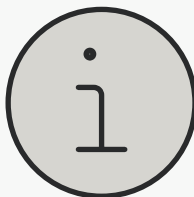
Summary means we only include our most important ideas.



When we write plan, we mean our Suicide Prevention Framework.

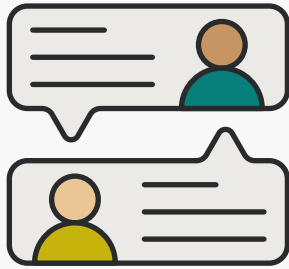


You can read the full plan [on our website](#).



You can find our contact information on page 18 at the end of this plan.

# How we made our plan



We made our plan by talking to people who have been in our services or system.



We also talked to experts. Experts are people who know a lot about preventing suicide.



We looked at information about suicide, like the best ways to prevent it.

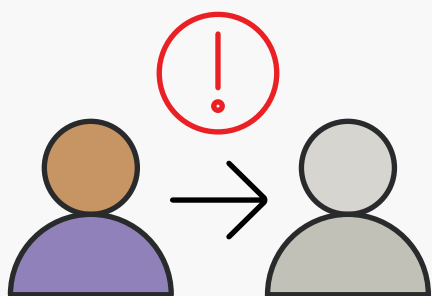


We also looked at how people behave when they are in prison.

# What is in our plan

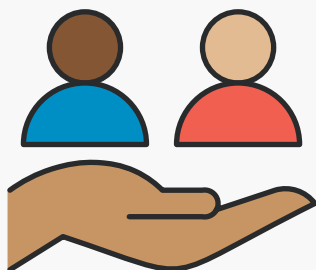


Our plan says what we will do to help protect people to be at less risk of suicide.



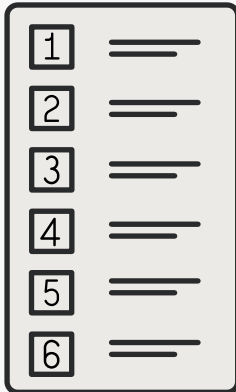
People might be at risk of suicide if they:

- think about ending their life
- have tried to end their life
- have hurt themselves on purpose.



Everyone is different and has different needs.

Our plan says how we will support people both in prison and in the community.



Our plan has 6 areas that we want to focus on. The areas are:

- a safe, secure, and caring environment
- timely identification and support
- collaboration
- continuity of care
- incident management
- trauma informed.

## Safe, secure, and caring environment

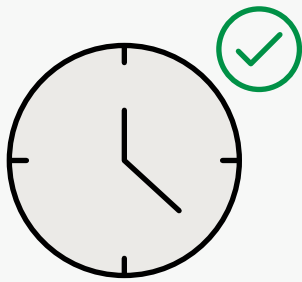


Safe, secure, and caring environment means we will:

- make prisons safer
- tell people about the support they can get
- help protect people by having activities that help with mental health.

# Timely identification and support

Timely identification and support means we will give support early if people need it.



We will make sure our staff know when people need help and how to give help.



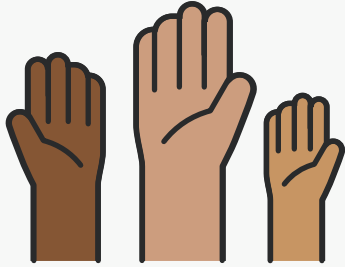
It is very important that we help people before they are at risk of hurting themselves.

To help people, we can:

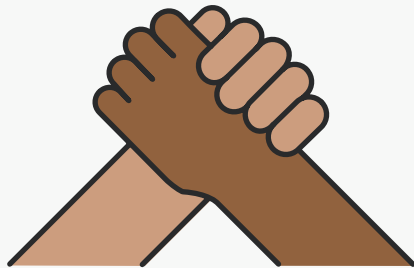
- do mental health assessments, this means a healthcare professional checks people's mental health
- make sure our staff know all about the support services we can give
- have peer support services.



# Collaboration



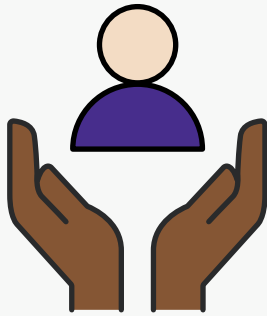
Collaboration means we work together to give care to each person who needs it. We help each person manage their mental health.



Collaboration means we might:

- give support that respects people's cultures
- work together in meetings to give the right treatments and programs.

# Continuity of care



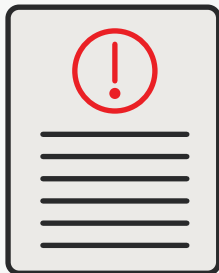
Continuity of care means we make sure people know what support they can get in the community.

To do this, we:

- help people get access to the right services when they are in the community
- give people information about support services
- work with other services in the community
- set up support for people who leave prison, to help them return to the community.



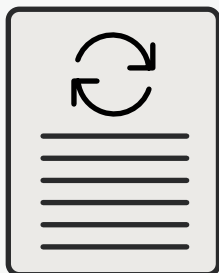
# Incident management



Incident management is about what we do when a suicide happens. And how we can improve things, so suicides do not happen.

To improve our services, we might:

- get information about people who might be a risk of hurting themselves so we know what we must improve
- plan our services by talking to people who know what it is like to have mental health problems or be at risk of suicide
- keep training our staff
- support and not punish people if they hurt themselves on purpose.



# Trauma informed



Trauma informed means we give the right support to people, including staff, who have been impacted by suicide.



Being impacted by suicide might mean:

- you know someone who died by suicide
- you know someone who tried to die by suicide
- you know someone who hurt themselves on purpose.



Being impacted by suicide means you have experienced trauma. Trauma is when something happens that is very stressful or makes you upset.



Trauma takes a long time to recover from.



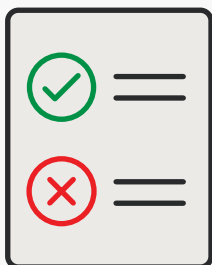
Trauma informed support means we think about the trauma when we give support.

It helps keep people safe in the future.

# How we will know if the plan is working



We will do reviews of our plan to see what is working and what we need to change or improve on.

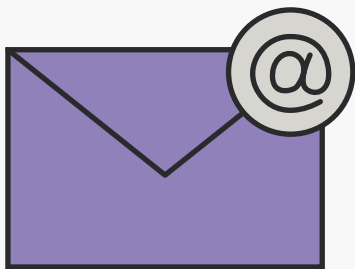


Reviews are when we check to see if the things in our plan are happening.

# Contact information



You can contact ACT Corrective Services for more information. There are many ways to contact us.



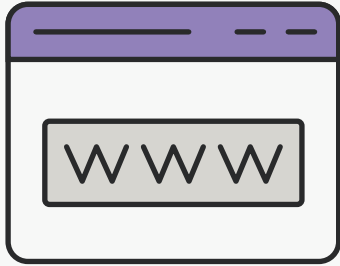
## Email

[amcexecsupport@act.gov.au](mailto:amcexecsupport@act.gov.au)



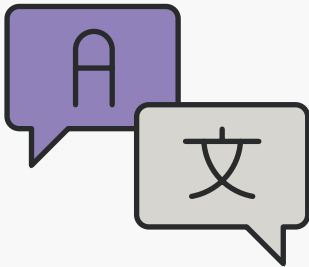
## Call

1300 286 583



## Visit our website

[correctiveservices.act.gov.au](http://correctiveservices.act.gov.au)



## Use the Translating and Interpreting Service (TIS)

Call 131 450 and ask to speak to ACT  
Corrective Services on 1300 286 583.



## Use the National Relay Service (NRS)

Visit the [National Relay Service](http://National Relay Service)  
website or call 1800 555 660.

This document (job AI2598) was created by Scope (Aust) Ltd. using both licensed and custom images. Document must not be sold to third parties. The images must not be reused without permission. For more information contact Scope on 1300 472 673 or visit [scopeaust.org.au](https://scopeaust.org.au)