



ACT Heritage Council

Entry to the ACT Heritage Register

Heritage Act 2004

20082. Deakin Anticline

Block 9, Section 36

DEAKIN

This document has been prepared by the ACT Heritage Council.

This entry which was previously part of the old heritage places or the old heritage objects registers (as defined in the *Heritage Act 2004*), as the case may be, is taken to be registered under the *Heritage Act 2004*.

Conservation Requirements (including Specific Requirements), as defined under the *Heritage Act 2004*, that are contained within this document are taken to be Heritage Guidelines applying to this place or object, as the case may be.

Information restricted under *the old heritage places register or old heritage objects register* is restricted under the *Heritage Act 2004*.

Contact: ACT Heritage Council c/o Secretary PO Box 144
Enquiries: phone 02 6207 2164 fax 02 6207 5715

Lynham ACT 2602
e-mail heritage@act.gov.au



ACT Government



environment ACT

Helpline: 02 6207 9777
Website : www.cmd.act.gov.au
E-mail: EnvironmentACT@act.gov.au



ACT Heritage Council

**AUSTRALIAN CAPITAL TERRITORY
ENTRY TO AN INTERIM HERITAGE PLACES REGISTER FOR:**

Deakin Anticline, Deakin

For the purposes of s. 54 of the *Land (Planning and Environment) Act 1991*, this heritage assessment for the above place has been prepared by the ACT Heritage Council as the basis for its inclusion within an interim Heritage Places Register.

This is pursuant to the Heritage Council decision at Meeting 85 on 21 August 2003.

Notification Effective: 21 December 2004

Further information about this place is available from:

**The Secretary
ACT Heritage Council
PO BOX 144
LYNEHAM ACT 2602**

**Telephone: (02) 6207 7378
Facsimile: (02) 6207 2200**

DEAKIN ANTICLINE, DEAKIN

LOCATION OF PLACE:

Block 9, Section 36 Deakin, including a 5m 'no development' buffer zone around the Anticline, measured from the base of the Anticline (Refer Figures 1 & 2).

FEATURES INTRINSIC TO THE HERITAGE SIGNIFICANCE OF THE DEAKIN ANTICLINE

The features which contribute to the heritage significance of the Deakin Anticline, and which require conservation, comprise:

- tuffaceous sandstone and siltstone of the Yarralumla formation;
- the anticlinal fold;
- The immediate setting of the Anticline, which is of a native bushland style, including the White barked Eucalypts (*Eucalyptus mannifera*) and non-irrigated native grasses; and
- The visual points to and from the Deakin Anticline, including both distant and close views (Refer Figure 2 below).

STATEMENT OF SIGNIFICANCE

Exposure of the Deakin Anticline (geological feature) is a result of the extraction of brick clay for the Yarralumla Brickworks (also a registered heritage place).

The Deakin Anticline is a significant element of the sedimentary rocks that comprise the Yarralumla Formation in the ACT. It is a clear illustration of a simple Anticlinal formation and a highly visible feature of the last marine incursion into the ACT region. It is also an important teaching site in that the geological features of an Anticline are clearly shown and readily accessible, particularly on the steep eastern face of the Anticline where the major Anticlinal hinge lies.

The Anticline is a very dominant geological feature within what is now part of the residential suburb of Deakin. Views of the northern and western faces of the Anticline are impeded by overgrown introduced exotic vegetation and fence lines. The views of the southern and eastern faces of the Anticline include key structural features and are essential to the sites interpretation and educational use. Views of the southern and western faces of the Anticline are short distance, owing to surrounding urban development.

SPECIFIC REQUIREMENTS FOR THE CONSERVATION OF DEAKIN ANTICLINE

In accordance with s.54 of the *Land (Planning and Environment) Act 1991*, the following specific requirements are identified as essential to the conservation of the heritage significance of the place. The guiding Conservation Objective is:

The Deakin Anticline and its immediate setting are to be conserved and appropriately maintained consistent with its significance.

CONSERVATION OBJECTIVE 1.

Provide adequate conservation management planning

Conservation Objective 1.1

Ensure that any actions impacting on the significance of the Deakin Anticline are based on professional conservation planning, with geological experience.

Specific Requirements for Conservation Objective 1.1:

- (a) A conservation management plan (CMP) shall be developed for the Deakin Anticline to guide its conservation and future use.
- (b) Any works necessary prior to the development of a CMP that have a potential impact on intrinsic features and are not addressed by these requirements shall be guided by a professionally documented interim assessment and conservation policy relevant to that feature (ie a Heritage Impact Statement - HIS).
- (c) No changes of use necessitating substantial changes to the Deakin Anticline or its immediate setting, or other substantial works affecting intrinsic features, other than reversible stabilisation works, shall be permitted prior to the preparation of a CMP, after which all works and uses should be in accordance with the CMP.
- (d) Maintenance will be as defined in the *Australian Natural Heritage Charter*, and shall not involve change to significant features. Maintenance shall be continued regardless of the status of the CMP or HIS.
- (e) Following the preparation of a CMP or HIS, identified essential conservation works shall be implemented. The requirements determined within the CMP or HIS may further refine the Specific Requirements in the interim Heritage Places Register.

CONSERVATION OBJECTIVE 2.

Conserve the Significant components of Deakin Anticline

Conservation Objective 2.1

Minimise the loss of integrity of the Anticline.

Specific Requirements for Conservation Objective 2.1.

- (a) The existing Yarralumla Formation containing the Anticline shall be protected from further built development.
- (b) The northern and eastern faces of the Formation, and especially the steep eastern face which reveals the Anticline, shall be maintained and appropriately conserved, recognising that natural processes of weathering will result in gradual erosion of the rock face.
- (c) Future development, including formal recreational facilities and formal gardens, shall not be permitted within Block 9, or within five metres of the base of the face of the Anticline. (refer to shaded 'no development' buffer zone on Figure 2 below).
- (d) Existing open views towards the northern and eastern faces of the Anticline from the existing pathway and open grassed area to the north-east of block 9 shall be retained and conserved. This shall include both close and distant views of the faces (refer to hatched 'restricted development' zone in Figure 2 below).

CONSERVATION OBJECTIVE 3.

Conserve the immediate landscape setting

Conservation Objective 3.1

The immediate landscape setting of the Deakin Anticline shall be conserved and maintained.

Specific Requirements for Conservation Objective 3.1.

- (a) The immediate landscape setting of the Anticline **should** consist of the following :
 - White barked Eucalypts; and
 - Non-irrigated native grasses;
 - Low key gravelled pathways may be provided to facilitate pedestrian access. Hard paved surfaces such as bitumen shall not be permitted.
- (b) The following elements **shall not** be permitted within the immediate landscape setting of the Anticline:
 - Formal public facilities, including barbeques and picnic tables;
 - built landscape structures, such as fences and decorative garden edging, and building or roofed structures, such as toilet blocks.

- (c) The mature native trees on the site, including the White barked Eucalypts (*Eucalyptus mannifera*), **shall** be retained and conserved (refer Figure 2 below for locations).
- (d) The native trees **shall** be retained except in circumstances where they have been professionally assessed as being moribund or where it can be demonstrated that there are significant health and safety reasons to warrant their removal. All works shall be in accordance with the provisions of the *Land (Planning and Environment) Act 1991* and the *Tree Protection (Interim Scheme) Act 2001* or subsequent Tree Protection legislation if relevant.
- (e) Plantings shall not include introduced exotic species or weed species.
- (f) The removal of exotic species, including oak trees and weeds from both the face of the Anticline and from within the immediate landscape setting shall be undertaken.
- (g) Controlled seeding / planting of small native shrubs and ground covers to a maximum height of 1.2m shall be permitted.
- (h) No shrubs or trees should be planted within five metres of the base of the Anticline.
- (i) The Anticline shall remain visually dominant in the immediate setting.
- (j) Landscaping shall not diminish the vertical scale and form of the Anticline. Trees should be pruned to a minimum height of two metres above natural ground or a height sufficient to ensure visibility of the Anticline face and structural elements.

CONSERVATION OBJECTIVE 4.

Public access to the Deakin Anticline

Conservation Objective 4.1

Maintain public accessibility to the Deakin Anticline as an educational resource.

Specific Requirements for Conservation Objective 4.1.

- (a) Public access to view the northern and eastern faces of the geological strata shall be retained.
- (b) The existing low key gravelled walkway through Block 9 which passes over the Anticline should be conserved and maintained.

MANAGEMENT RECOMMENDATIONS:

In assessing this place for the interim Heritage Places Register, the Council recommends that the following actions and activities should be undertaken to enhance the heritage values of the place. They are made as recommendations and have no legal effect.

The formation is robust, although the steep faces include some joint blocks, which tend to break loose occasionally. It could pose a hazard if visitors were careless in climbing the rock or to children who may play on the site.

At the present time, a clear view of the structure is limited by the condition of the area in front of the faces at the southern end of the Deakin oval. Tall grass, weeds, uncontrolled shrub growth and derelict fencing materials detract both from the geological and the landscape interest of this feature. Clearing and regular maintenance of this area would enhance its value as an educational feature.

- i. The high grass along the north and east faces should be cut and maintained to allow a safe approach to the face for close visual inspection of the bedding planes.
- ii. The exotic shrubs and trees should be removed from the north and east face.
- iii. The eucalypts should be allowed to remain on the north and east face.
- iv. An appropriate sign explaining the geological features and significance of the Yarralumla Formation should be placed near to north eastern faces near roads or pedestrian access. The sign should include a map of Canberra geology showing how the Deakin Anticline relates to other geological units and the Yarralumla Brickworks.

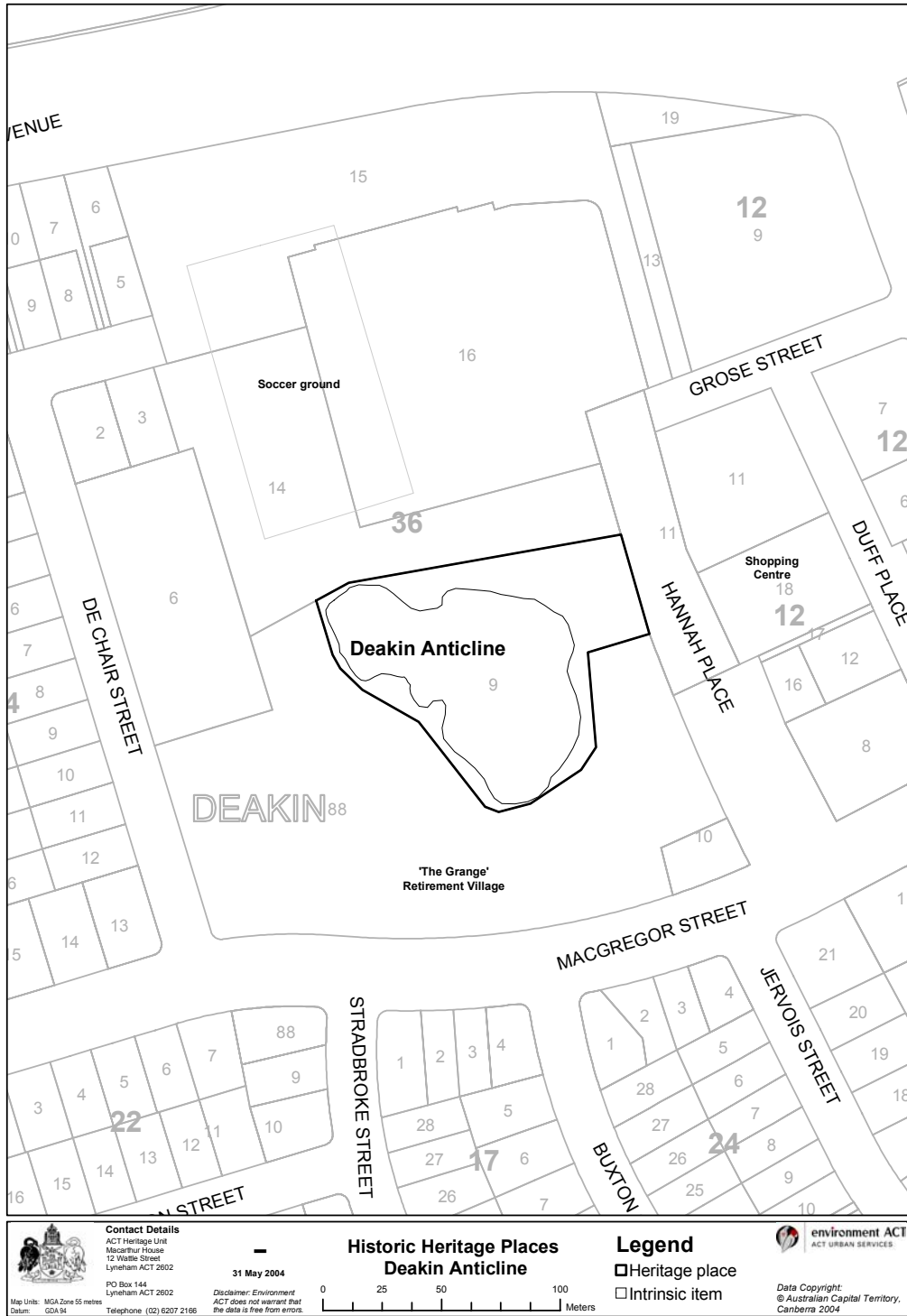


Figure 1
 Deakin Anticline location plan

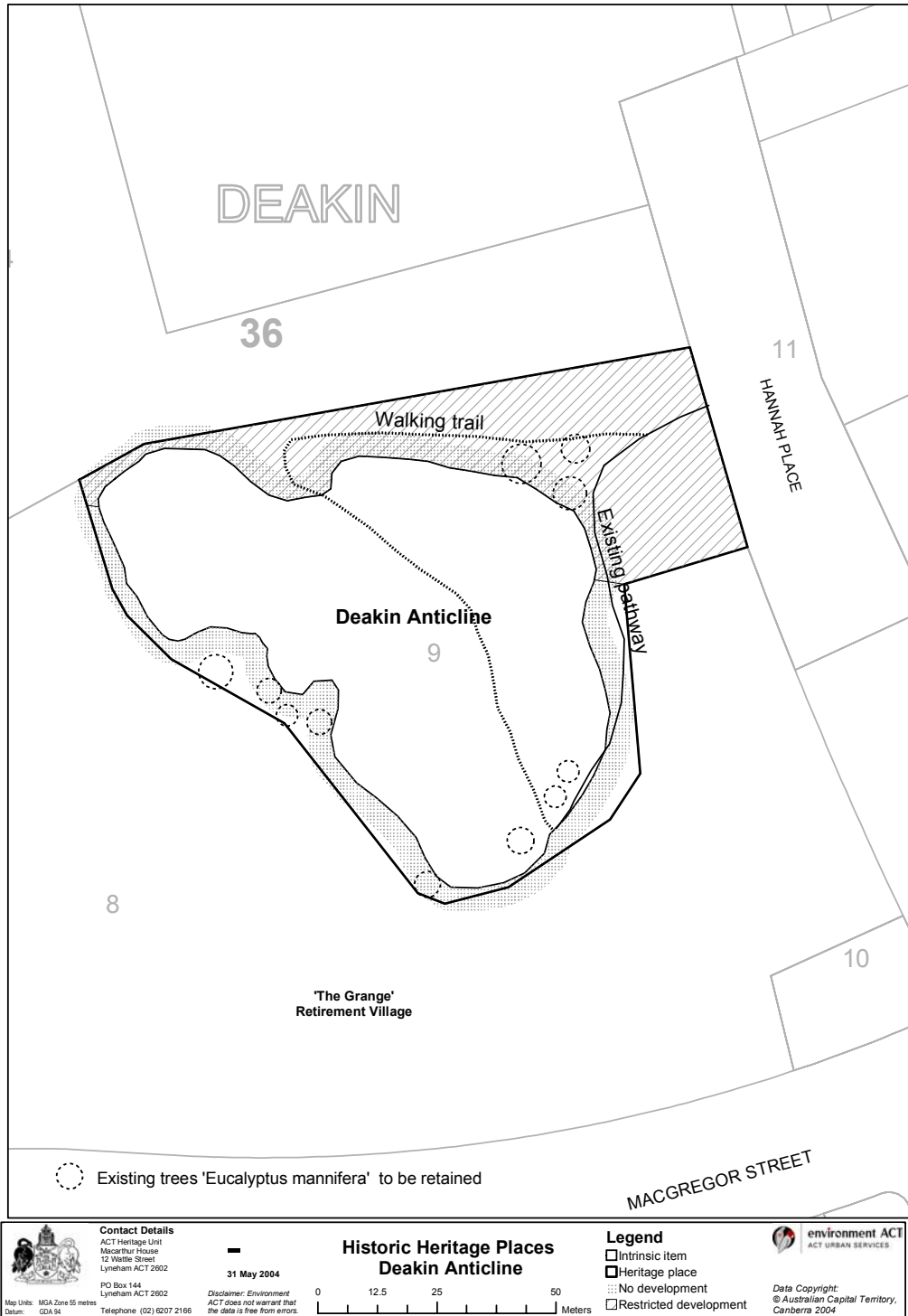


Figure 2
 Deakin Anticline, development control plan, showing location of intrinsic features

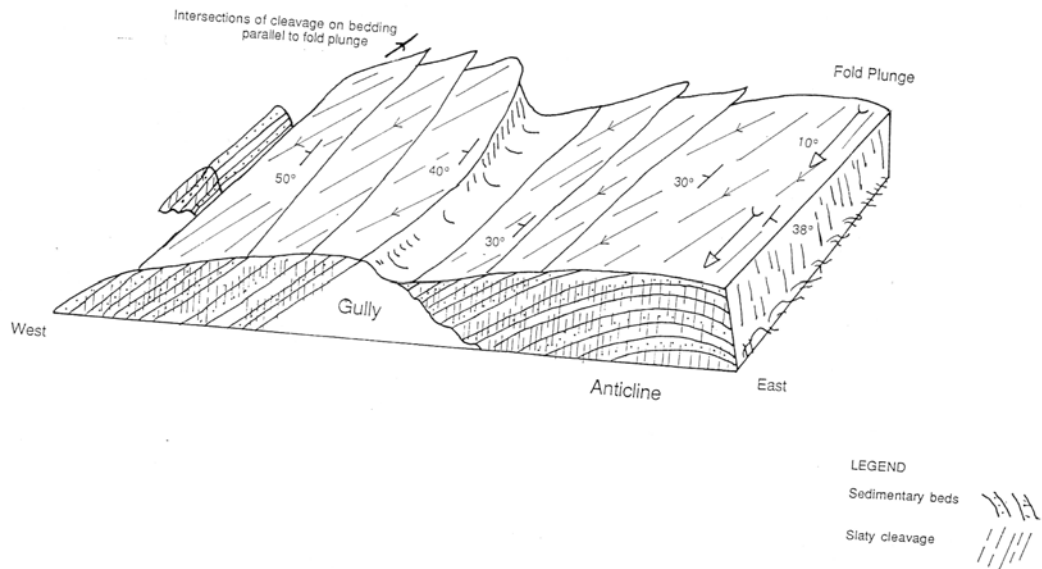


Figure 3
 Deakin Anticline, block view looking north
 ANUTECH Pty Ltd & Strine Design, Deakin Anticline CMP, 1988

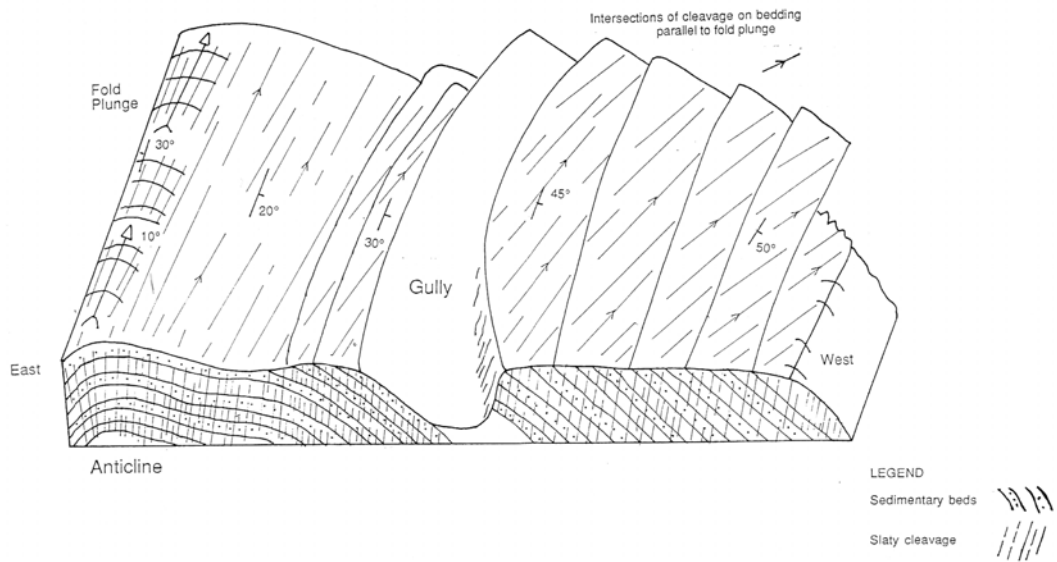
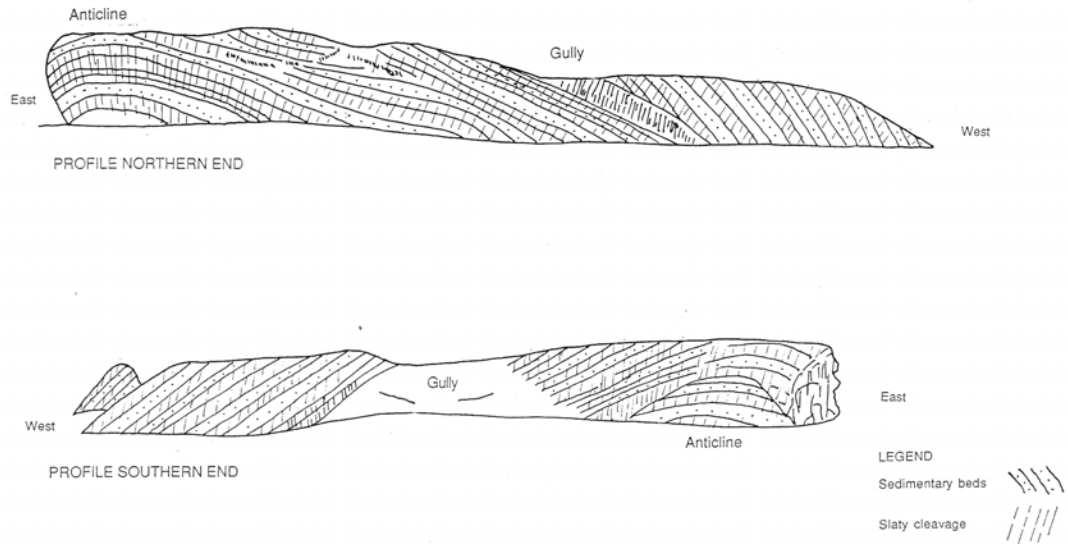


Figure 4
 Deakin Anticline, block view looking south
 ANUTECH Pty Ltd & Strine Design, Deakin Anticline CMP, 1988



Figures 5 & 6

Section profiles through the northern and southern ends of the Deakin Anticline
 ANUTECH Pty Ltd & Strine Design, Deakin Anticline CMP, 1988