

Light Rail to Woden Construction Update

August 2023



**BUILT
FOR
CBR**

Construction notification

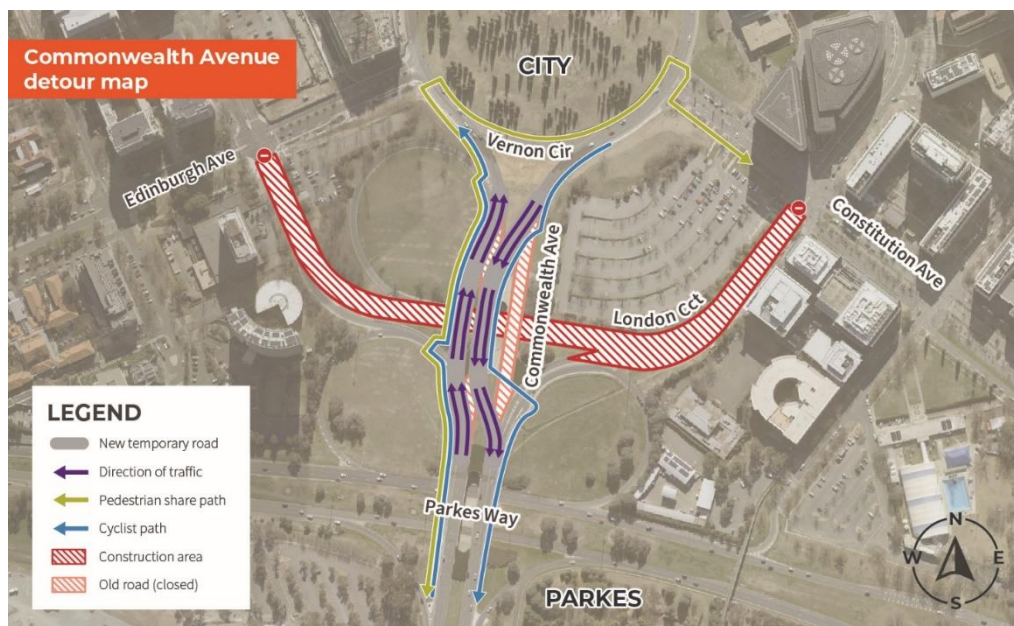
The ACT Government is investing in infrastructure to benefit the lives of all Canberrans. The Light Rail to Woden project is being Built for CBR to create a more connected, sustainable, and vibrant city. This construction notification provides a summary of expected activity and traffic changes associated with the side track works for September on Raising London Circuit – an enabling project for Light Rail to Woden.

Since June, earthworks have been carried out to build a side track including importing and stockpiling fill, removing retaining walls, and installing new road pavements. The side track is a temporary road built along the western side of the Commonwealth Avenue bridge (northbound) over London Circuit and will ensure two lanes of traffic in both directions (northbound and southbound) are maintained during peak hours as construction activities continue.

From **6am Monday 4 September**, traffic heading north on Commonwealth Avenue towards the city will be diverted onto the side track over London Circuit between Parkes Way and Vernon Circle. Traffic heading south on Commonwealth Avenue towards the lake will be diverted onto the northbound lanes across London Circuit between Vernon Circle and Parkes Way).

Motorists are advised to expect minor delays, particularly as people adapt to the new arrangements. There will be no impacts to bus services. Travel speed reductions will remain in place on Commonwealth Avenue between Parkes Way and Vernon Circle.

Cyclists will also be diverted, with cycling paths following the road lanes. Pedestrians will use a shared path following the side track. Please refer to the Commonwealth Avenue detour map below.



Contact us:

Major Projects Canberra

Ph: 1800 956 409 Email: lightrailtowoden@act.gov.au

Website: act.gov.au/lightrailtowoden



To speak to someone in a language other than English, telephone the Telephone Interpreter Service (TIS) on **13 14 50**. It operates 24 hours a day, seven days a week.

Commonwealth Avenue night work

In the lead up to the traffic switch, night shifts will be undertaken between **Monday 28 August to Friday 1 September, from 6pm each night to 6am the following morning**. During this time, work will proceed on Commonwealth Avenue to install traffic barriers and fencing, and to undertake line marking and asphaltting in preparation for moving traffic to the side track. While this work is undertaken, traffic will be reduced to one lane in each direction on Commonwealth Avenue (northbound and southbound) and traffic control measures will be in place.

To facilitate the opening of the side track, Commonwealth Avenue will be closed in both directions between Parkes Way and Vernon Circle from **8pm Sunday 3 September to 6am Monday 4 September**. During this closure, motorists heading north on Commonwealth Avenue can use Parkes Way westbound and the Edinburgh Avenue exit to access the city. Motorists heading south towards Commonwealth Avenue Bridge can use Cooyong Street or Constitution Avenue (from Vernon Circle) to access Parkes Way via the Coranderrk Street roundabout, then access Commonwealth Avenue via the on ramp (refer to detour map below). If works cannot proceed due to inclement weather, the closure and traffic change will be postponed to the following week.

During the closure, no bus stops will be missed, however buses will be diverted via Parkes Way and Edinburgh Ave (northbound buses) and via Constitution Avenue and Parkes Way (southbound buses). Pedestrian and cyclist detours will also be in place via Edinburgh Avenue, Constitution Avenue and the Parkes Way pedestrian bridges.

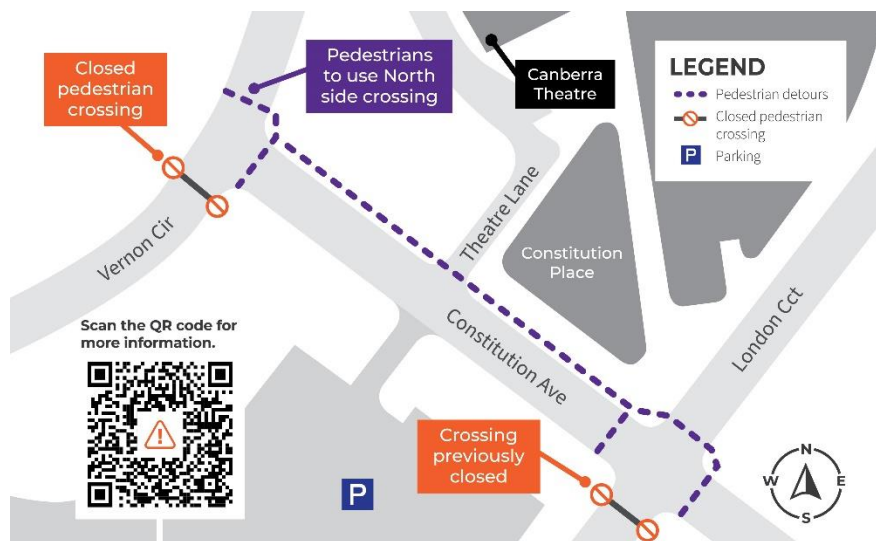


Pedestrian crossing change at Constitution Avenue and Vernon Circle intersection

As part of the Raising London Circuit project, changed traffic conditions are in place on Constitution Avenue and Vernon Circle.

To assist with traffic flow, the pedestrian crossing on Vernon Circle at Constitution Ave (southside) will be temporarily closed from **Friday 25 August 2023**.

Pedestrians can continue to use the Vernon Circle pedestrian crossing on the northside (refer to map below). Please follow detour signs in place, only cross the road at designated crossings and watch for vehicles.



More information



While we make every effort to inform you of upcoming construction activities, works are weather dependent and subject to change. Visit act.gov.au/lightrailtowoden to stay up to date. Thank you for your patience during this time.

Use the QR code to receive construction notifications in your inbox.