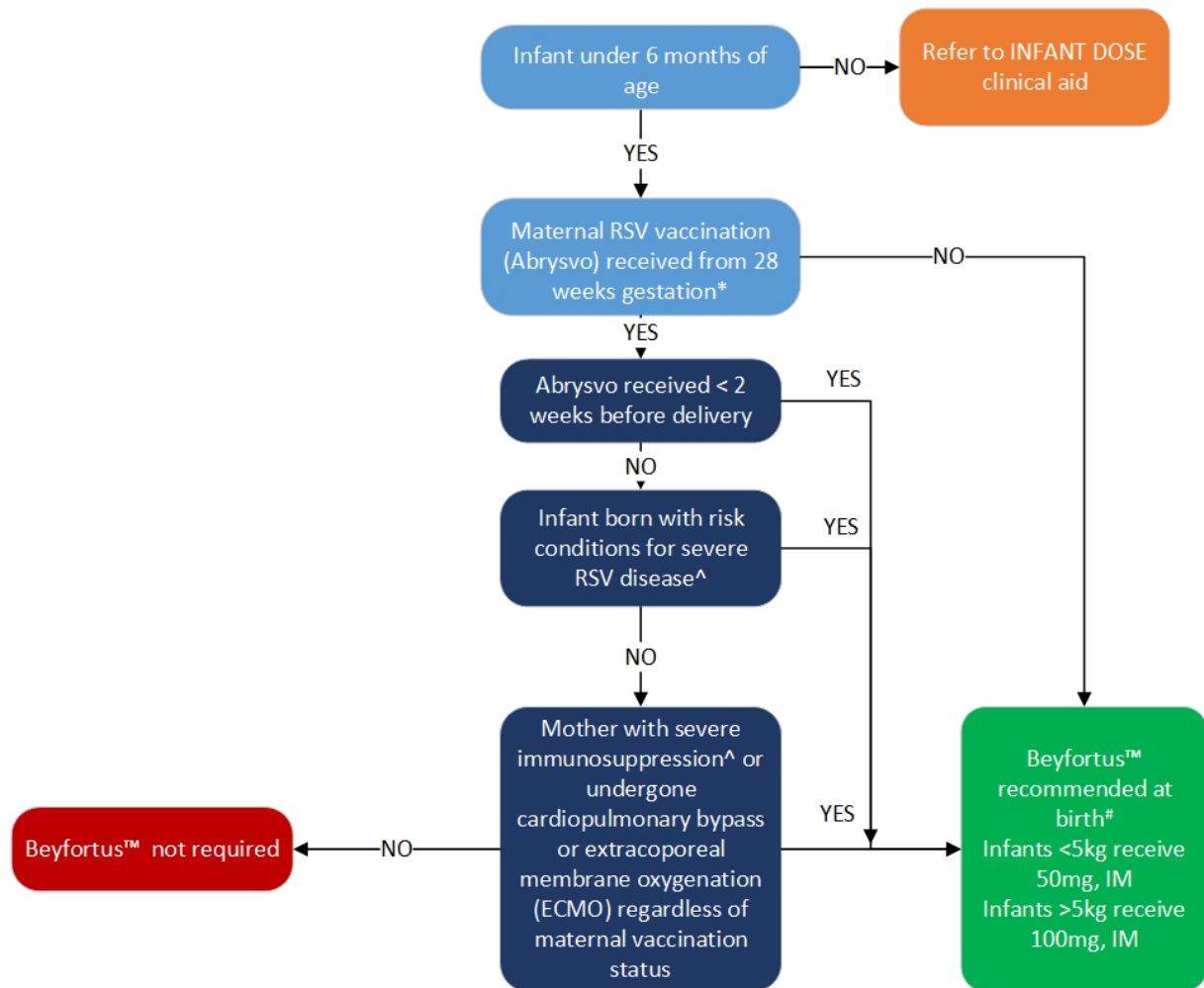


Newborn and under 6-month-old Beyfortus decision aid



*Check maternal RSV vaccination status on the Australian Immunisation Register

^Refer to the ACT RSV prevention program eligibility information

#The dose of nirsevimab for infants weighing <5kg, born during or entering their 1st RSV season is 50mg (0.5mL). The dose for infants weighing ≥5kg, born during or entering their first RSV season is 100mg (1mL). Nirsevimab is administered by intramuscular injection.