



**ACT**  
Government

# CANBERRA HOSPITAL EXPANSION

Emergency, Surgical and Critical Healthcare Building  
Development Application Design Update

MAY 2021





## INTRODUCING YOUR NEW EMERGENCY, SURGICAL AND CRITICAL HEALTHCARE BUILDING

**The new Emergency, Surgical and Critical Healthcare building is the centrepiece of the Canberra Hospital Expansion Project and will include more operating rooms, more treatment spaces and more intensive care beds.**

The latest plans and designs, outlined in this document, are the culmination of over twelve months of ongoing consultation with hospital staff, consumers, hospital users, families, carers and the general public.

The Canberra Hospital Expansion will deliver increased capacity across Canberra Hospital's Emergency Department, adult intensive care, paediatric care, surgical, coronary care and emergency services.

# GROWING CANBERRA'S HEALTHCARE CAPACITY

**156**  
IN-PATIENT BEDS



**MEDICAL  
IMAGING**



**22** OPERATING  
THEATRES  
IMPROVING ACCESS  
TO SURGERY

**55**  
DAY  
SURGERY  
BEDS



**60** ICU  
TREATMENT  
SPACES



INCLUDING  
**4** PAEDIATRIC  
ICU BEDS

**72** ADDITIONAL  
EMERGENCY  
DEPARTMENT  
TREATMENT SPACES



**147**  
EMERGENCY  
DEPARTMENT  
SPACES



'SHELL' SPACE  
FOR FUTURE  
EXPANSION



SEPARATE  
WAITING  
AREAS FOR  
**CHILDREN  
AND ADULTS**

**CARDIAC  
CARE  
BEDS**



INTENSIVE  
**CARE  
UNIT**



RELOCATION OF  
**THE HELIPAD**  
IMPROVING ACCESS TO THE  
EMERGENCY DEPARTMENT



**CORONARY  
CARE UNIT**



PERIOPERATIVE  
SUITE



**INPATIENT  
UNITS**

# DELIVERING A FACILITY THAT YOU HELPED DESIGN

The latest plans for the Emergency, Surgical and Critical Healthcare building are the culmination of months of consultation with clinicians, consumers and the local community.

More than twelve months of your feedback has been used to help shape this project including input from community, consumer and clinical reference groups, the general public and expert advice. This culminated in December last year with a pre-DA consultation on the draft designs for the Development Application.

Over a 10-week period, we received 57 survey submissions, 45 written submissions as well as several hundred pieces of feedback gathered at pop up stalls held at shopping centres around Canberra, at virtual information sessions and through stakeholder reference groups.

This feedback informed the final Development Application which includes the features outlined below.

 <p><b>GREEN SPACES &amp; REFLECTION GARDEN</b></p>	 <p><b>EXTRA WIDE CORRIDORS</b></p>	 <p><b>NEW COURTYARDS WITH DEDICATED SPACES FOR VETERANS AND THE INDIGENOUS COMMUNITY</b></p>		
 <p><b>WELCOME HALL AT CAMPUS HEART</b></p>	 <p><b>DAY BEDS FOR FAMILY AND CARERS</b></p>	 <p><b>NEW PEDESTRIAN CANOPY</b></p>	 <p><b>INDOOR AND OUTDOOR STAFF AREAS</b></p>	 <p><b>BREAKOUT SPACES FOR PATIENTS &amp; LOVED ONES</b></p>
 <p><b>URBAN DESIGN MODIFIED FOR COMFORT OF NEAR NEIGHBOURS</b></p>	 <p><b>A MIX OF SINGLE AND SHARED PATIENT ROOMS</b></p>	 <p><b>SURGICAL RECOVERY AREA REPOSITIONED FOR NATURAL LIGHT</b></p>	 <p><b>CHANGING PLACES ADULT CHANGING FACILITIES</b></p>	
 <p><b>ENHANCED EMERGENCY WAITING AREA</b></p>	 <p><b>DEDICATED CHILDREN'S PLAY AREA</b></p>	 <p><b>POWER OUTLETS IN WAITING AREAS &amp; PATIENT ROOMS</b></p>	 <p><b>A RANGE OF SEATING OPTIONS</b></p>	 <p><b>MORE RETAIL AND FOOD OPTIONS</b></p>
 <p><b>WELLNESS VILLAGE FOR USES SUCH AS MARKETS AND PERFORMING SPACES</b></p>	 <p><b>NATURAL LIGHT THROUGHOUT THE BUILDING</b></p>	 <p><b>SHORT STAY &amp; ACCESSIBLE PARKING</b></p>	 <p><b>DROP OFF &amp; PICK UP ZONES</b></p>	

## MAKING IT EASIER TO FIND YOUR WAY

The new Emergency, Surgical and Critical Healthcare building will include a Welcome Hall (pictured) to improve your wayfinding and arrival experience. The Welcome Hall will encourage community activities including education

events, markets and performances. This additional space will also connect to the covered walkway linking the new building to the existing building 2, making it easier for you to get around campus.



▲ Welcome Hall view from North Plaza Entry



## A NEW MAIN ENTRY PLAZA FOR THE CAMPUS HOSPITAL ROAD SOUTH

This area is the vibrant, active and multi-tasking heart of the campus. It will serve as the Emergency Department drop off and pick-up area and main arrival point for pedestrians walking from the multi-story carpark.

Safety for all users of this area has been fundamental in the design response for this plaza:

- The turning head has a flush kerb with the plaza for users' ease of access and entering or exiting vehicles.
- Bollards ensure pedestrian safety and the new raised pedestrian crossing aligns with the Emergency Department entry.
- To allow clear lines of sight, the design has minimised clutter per Crime Prevention Through Environmental Design principles.



## EASIER DROP OFF AND PICK UP – HOSPITAL ENTRY WEST



The redeveloped Hospital Entry West will provide a formal address to the western edge of the hospital campus. It includes improved parking, pick-up and drop off, will keep the Bateson Road pedestrian footpath, and add an Aboriginal and Torres Strait Islander community gathering space.

- Aboriginal and Torres Strait Islander community gathering space
- Drop off spaces
- Short stay spaces

## CALMING TRAFFIC AND PROVIDING PARKING

Reconfiguration of Hospital Road will include a new emergency drop-off and pick-up area to serve the new facility. The project will also redesign the existing emergency drop-off area on Bateson Road as the new main entrance for the Hospital.

The redesigned areas will enhance the capacity for pick-up and drop-off spaces:

- 16 drop off spaces, ten short stay spaces and two accessible spaces on Hospital Road
- seven drop off spaces, five short stay spaces and six accessible spaces at the new main entrance area

A parking area (for Building 4) near the reflection garden will also accommodate 16 parking spaces (including two accessible spaces), situated immediately to the east of Building 4. This retains the existing provision of parking spaces at this location.



▲ Main Plaza Entry Hospital Road South: pick-up and drop-off zone



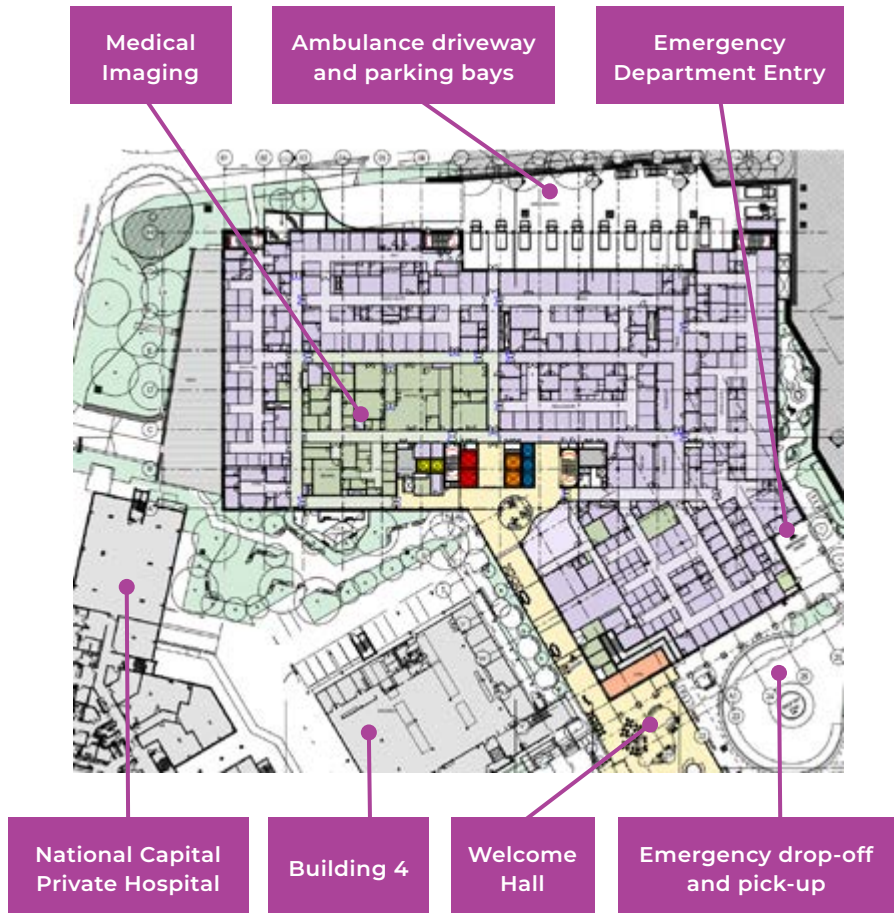
▲ Hospital Entry West: new main entrance drop-off area on Bateson Street (current Emergency Department entrance)

# A MODERN EMERGENCY DEPARTMENT

The building design is based on models of care targeting the principles of right care, right place, right time. New patient flows move patients into the appropriate treatment area so they are receiving the right care in a timely manner.

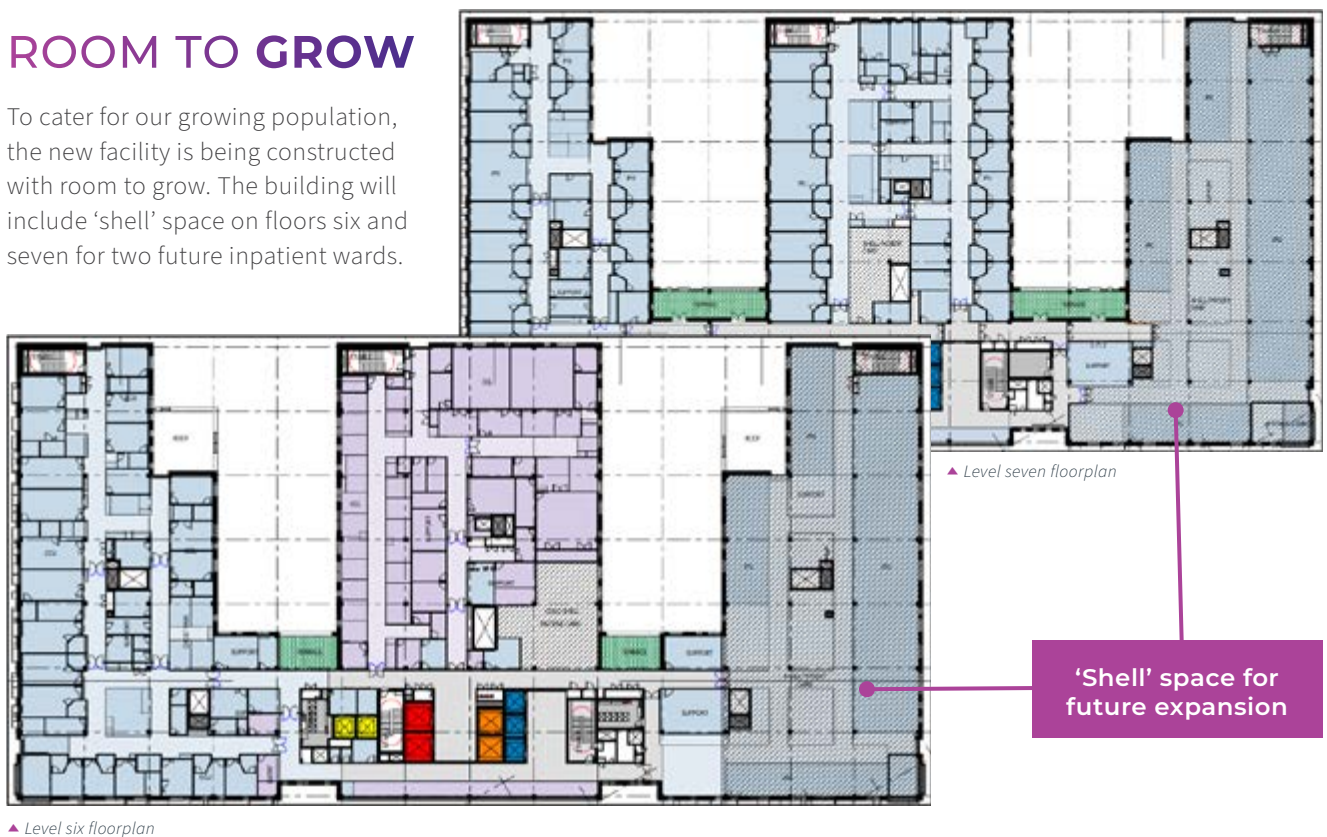
- Rapid assessment is planned to facilitate timely triage flows, with separate paediatric and adult flows.
- Short Stay Unit for fast track patients facilitates flexibility with bed and chair bays to take pressure off the acute zone.

Emergency Department floorplan ▶



# ROOM TO GROW

To cater for our growing population, the new facility is being constructed with room to grow. The building will include 'shell' space on floors six and seven for two future inpatient wards.



▲ Level six floorplan



## GREEN SPACES – IMPROVING WELLBEING

The design includes areas for people to gather, reflect, make a phone call or take time out. New outdoor green spaces provide areas that are welcoming, comfortable and safe.

These spaces feature a variety of seating options for different needs, waste bin enclosures and bike racks. Tactile Ground Surface Indicators and handrails will create an accessible space.

Green spaces will also minimise urban heat through soft landscaping.



▲ Reflection garden situated between the new building and existing Building 4.

### REFLECTION GARDEN

The Reflection Garden is a green lawn area with large shade trees and comfortable seating for a peaceful place to get away from the busy hospital life.

The lawn space will allow for group gatherings and play for children.

### PAEDIATRIC COURTYARD

The paediatric courtyard is a family friendly space that provides a positive distraction for the family who are waiting to be treated.



### LANDSCAPE TERRACES

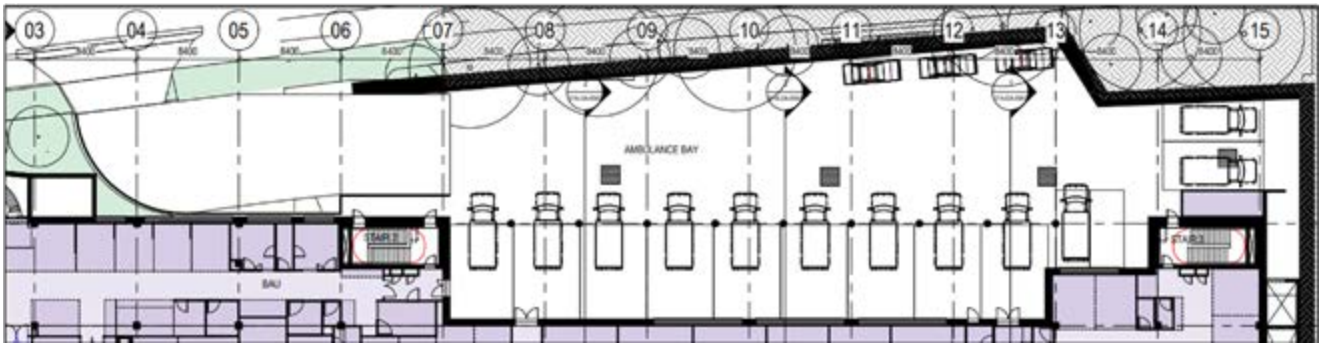
Located on several upper levels, terrace spaces allow patients to enjoy getting outside. Landscape terraces include the Café Terrace, Intensive Care Unit (ICU) Terrace and Inpatient Unit and Family Room Terraces.

Outdoor therapy terrace areas will support patients receiving care in the ICU and their visitors. Each ICU terrace includes four dedicated bed spaces with medical input panels. Each bed space allows patients to enjoy natural light and fresh air in a shaded structure with room for visitor seating.

◀ ICU Terraces located on level 5

## DEDICATED AMBULANCE ENTRY AND DRIVEWAY

The new ambulance entry and parking bays are located on the east side of the building. The entry is accessible via Palmer Street and provides parking for 12 ambulances and three police vehicles. This dedicated ambulance entry will improve safety by separating this service from others arriving at the new facility and will help ease traffic congestion on local streets.



▲ Palmer Street Ambulance driveway

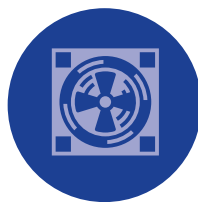
## ACCESSIBILITY

- The new emergency pick up and drop off has a flush kerb with the plaza for easy access for entering or exiting vehicles.
- The new building will also include Changing Places facilities. These are a space designed for people who cannot use standard accessible toilets. They include extra space and specialised equipment for high support needs users and their carers to safely use toilets.
- Wide corridors allow patient beds or wheelchairs to comfortably pass each other.
- Green spaces are wheelchair accessible with places for wheelchairs integrated into seating options.



## AIR QUALITY AND VENTILATION

Each department is served by an individual air conditioning system, which dedicates the supply of air to that department and minimises potential for contamination between departments. The air supplied throughout the building has a high component of direct outdoor air, which ensures dilution and safe removal of airborne contaminants. Ultra Violet C Germicidal Irradiation (UVCGI) sterilisation helps destroy pathogens and reduces the potential build-up of dirt and mould in the major air handling units. The outdoor inlets are provided with high levels of filtration, with the ability to install additional filters in times of poor outdoor air quality, such as from dust, pollen or bushfires. This ensures that the indoor air is maintained at the highest practical level of quality at all times.



## SUSTAINABILITY

The building is targeting a certified Green Star rating which ensures that the building is at the forefront of the Australian built environment. This recognises the wide-ranging sustainability initiatives adopted in the design that address energy efficiency, water conservation, minimisation of resource depletion.

As well as environmental sustainability, the building is set to become a major part of the ACT's socially sustainable infrastructure. Central to these strategies is the electrification of the building which, when combined with renewable power from the grid, sees the elimination of fossil fuel consumption in the day-to-day operation of the building and allows the building to play a key part in facilitating ACT's carbon neutral commitments.

This has only been made possible by reducing demand as much as possible through designing a building envelope that efficiently protects from the extremes of Canberra winter and summers and takes advantage of the ambient conditions during milder times of the year. Major heat-recovery systems ensure operational energy efficiency by avoiding wasted energy through heating and cooling of ventilation air.

# LOOKING FORWARD AND STARTING CONSTRUCTION

The Canberra Hospital Expansion is being delivered through a two-stage Design and Construct process. Following an open approach to the market last year, the Territory engaged Multiplex to deliver Stage 1 to progress the design to the point of Development Application submission. Multiplex has now tendered their offer to deliver the Stage 2 construction works which will see further development of the design. The Territory is scheduled to complete its assessment of the offer mid this year.

## QUARTER 4 2020

The Pre-DA Consultation Package of detailed designs for the emergency, surgical and critical healthcare building released as part of the pre-Development Application consultation period

## QUARTER 4 2020

Refurbishment of ANU teaching and training spaces in Building 4 completed

## QUARTER 1 2021

The emergency, surgical and critical healthcare building Development Application lodged

## QUARTER 1 2021

Child at Risk Health Unit works completed

## QUARTER 1 2021

Early works commence on the new facility site and utility services relocation on Hospital Road

## QUARTER 2 2021

The Development Application for the new healthcare facility will be available for public comment

## QUARTER 2 2021

Building 9 accommodation refurbishment due for completion

## QUARTER 2 2021

Temporary carpark ready for hospital staff use

## MID 2021

Building 8 construction due for completion

## MID 2021

The Development Application outcomes due for planning consideration

## MID 2021

Site establishment will commence for the new emergency, surgical and critical healthcare building at the current Building 5 and Building 24

## MID 2021

Demolition of Building 5 and Building 24 to start

## MID 2021

The final Design and Construction Phase offer is expected to be accepted in June this year

## LATE 2021

Construction to start on the new emergency, surgical and critical healthcare building

## GET INVOLVED

To view the Emergency, Surgical and Critical Healthcare Building Development Application in full visit [planning.act.gov.au](http://planning.act.gov.au) or visit [hospitalexpansion.act.gov.au](http://hospitalexpansion.act.gov.au) for construction updates.



**ACT**  
Government

Major Projects Canberra

Produced by Major Projects Canberra with input from Multiplex and Canberra Health Services.

Images in this document are artists impressions only.

Email: [hospitalexpansion@act.gov.au](mailto:hospitalexpansion@act.gov.au)

## Canberra Hospital Expansion

Growing our  
healthcare capacity