

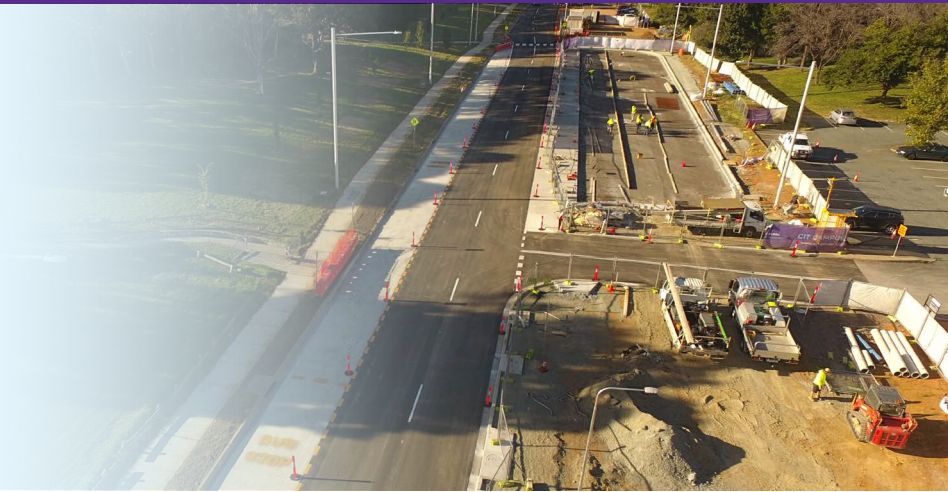
CIT Campus – Woden Construction Look Ahead

To May 2022



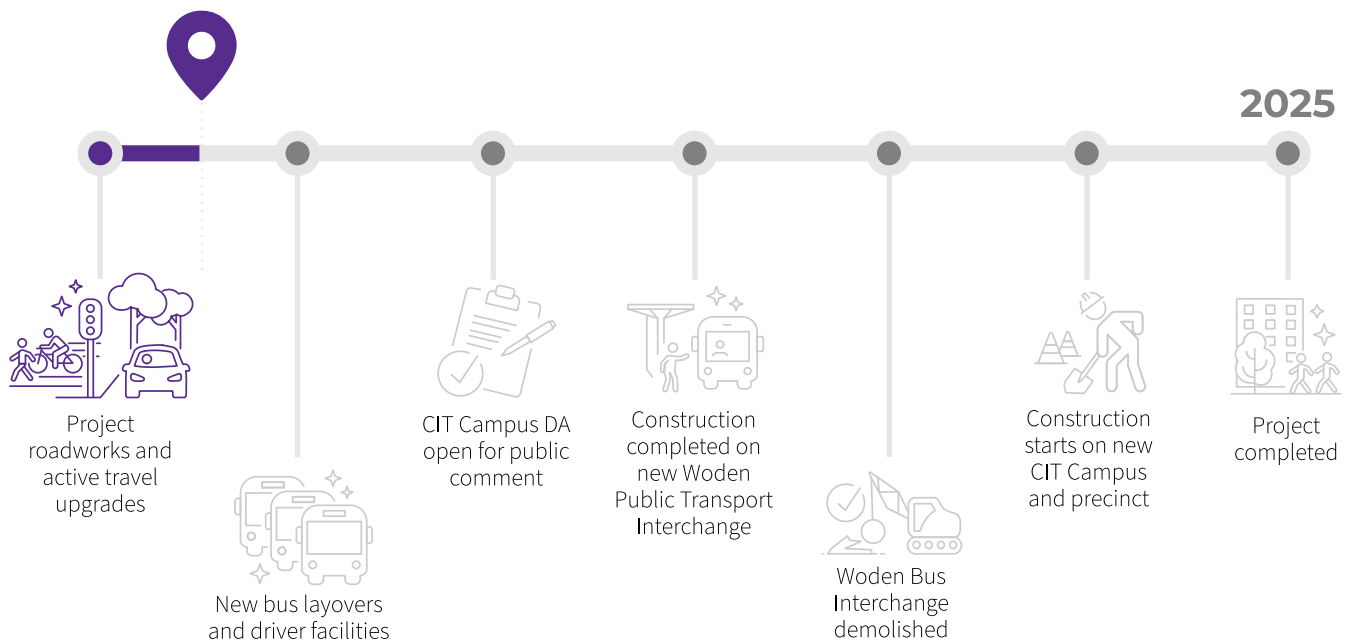
ACT
Government

A new town centre precinct is coming to Woden. It will bring state of the art learning facilities, a safer light rail ready public transport interchange, improved active travel and more green spaces on Woden's eastern side. Construction in the Woden Town Centre is increasing. This construction look ahead provides a summary of expected activity in the work zones to May 2022.



▲ Works along Easty Street will now shift to completing the bus layover.

Progress so far



In the Construction Zone

From now until the end of May construction works will continue to focus on the utilities, verge and road works required to support two new local bus layover areas and the future public transport interchange.

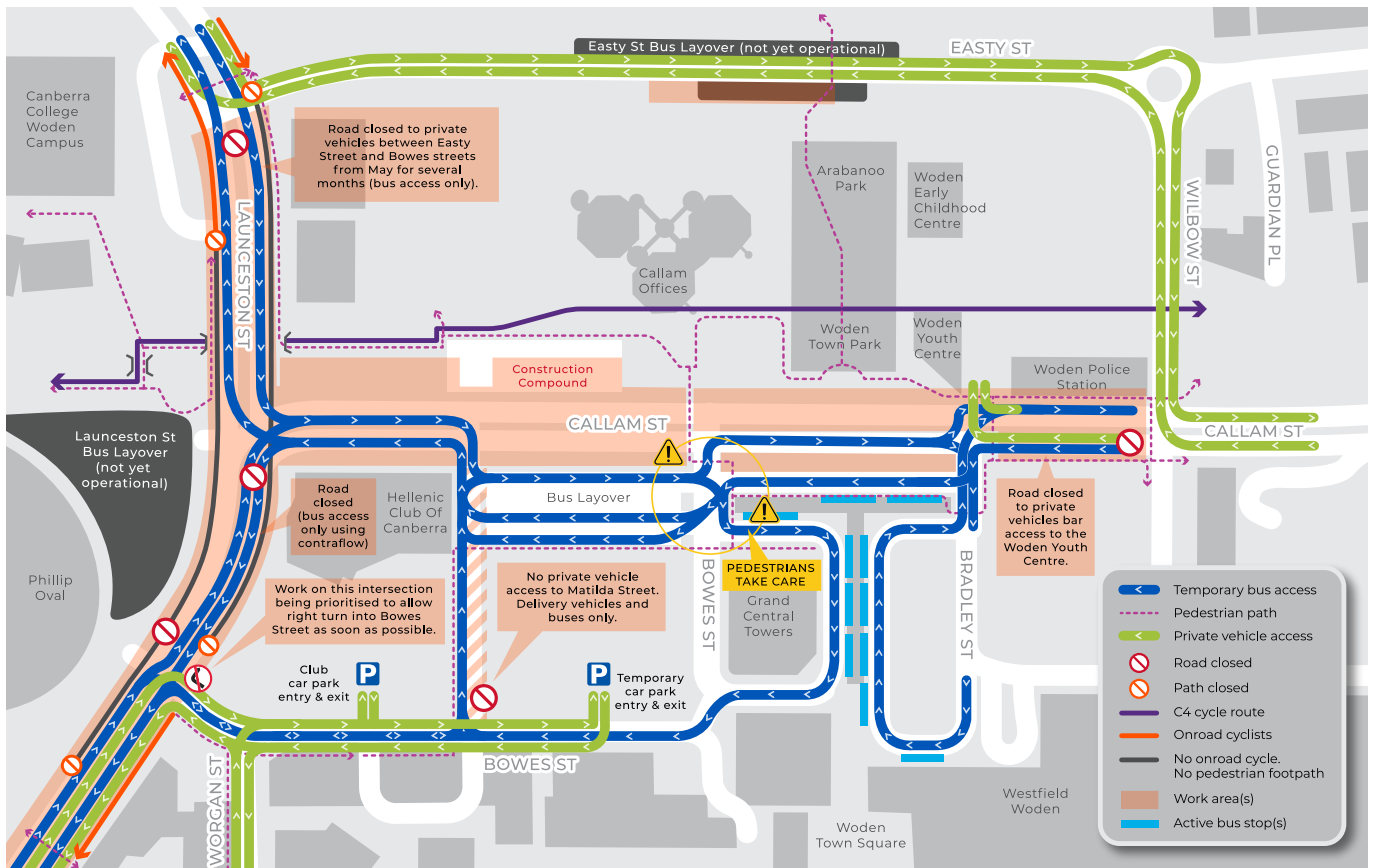
On Callam Street the team is busy relocating and/or upgrading water, telecommunications and electrical services. Meanwhile, Launceston Street will partially close for several months from May to allow upgrades to the road and intersections

between Easty and Bowes streets. As a result, some pedestrian and cycle routes will be impacted.

The coming months will also see a hive of construction activity at the new bus layover near Phillip Oval, as well as the layover along Easty Street, as works on these new facilities continue.

This means there are lots of changes on the way. Please pay attention to signage that will help you best navigate the construction works in your area.





Callam Street remains permanently closed

The section of Callam Street between Bradley and Matilda streets has been closed permanently to private vehicles to make way for the new Woden Public Transport Interchange.

In addition, access has been temporarily limited from Launceston Street to allow for construction.

Despite the closure access to Westfield Woden from the south has not changed, with those accessing the shopping centre from the north encouraged to use Melrose Drive. Visitors to the Woden Youth Centre can continue to turn into the carpark from the south but must exit left on to Callam Street to avoid the impacted area.

Easty Street reopened

Easty Street has reopened to private vehicles in both directions following the recent completion of asphalt works.

With the road open, works will now primarily occur within the verges behind fenced areas. These works will include finalising the bus layover and further improvements to active travel connections.

However, please note that there may still be short periods of one-way traffic required so that some remaining roadworks can be completed. This will be managed by traffic controllers.

Launceston Street temporary closure

With Easty Street reopened, focus will soon shift to completing upgrades along Launceston Street. The section of Launceston Street between Bowes and Easty streets will temporarily close to private vehicles in May for several months. During this period this area will only be available to buses and emergency vehicles.

During the closure Woden CBD is best accessed via Melrose Drive by those travelling from the north. If you require access to Bowes Street the right turn from Launceston Street is now clearly marked and will soon become a signalised turn.

Meanwhile, the opening of Easty Street will help facilitate vehicle access to local facilities for those coming via Yamba Drive. The Canberra College north entrance and exit closest to Yamba Drive also remains open.

The pedestrian crossings at intersections along Launceston Street (north/south as well as east/west) will be modified while these works are taking place.

Changes for pedestrians and cyclists

From late-April, some additional pedestrian and cycle diversions will be required.

This includes the pedestrian crossing at Launceston and Callam streets which will be unavailable until about July. During this time, please use the underpass which now has improved lighting.

For example, if you need to get from Canberra College to the bus interchange, use the underpass and then walk/ride alongside the creek bed to the Bowes Street crossing.

Throughout April and May there will also be temporary paths in place between the Woden Town Park and Arabanoo Park as our team works on sewer lines for the new bus layover on Easty Street.

There are now safe and lit pedestrian crossings near Canberra College on Launceston Street and one on Easty Street near the Childcare Centre and Arabanoo Park.

Signage will be in place to help direct you during these changes. Please observe this signage and ensure you walk or ride only in designated areas.

Please visit act.gov.au/citcampuswoden for the latest driver maps and active travel diversions.

Sign up for these updates

If you haven't already, sign up to receive this construction look ahead via email using the QR code. If you'd prefer a printed copy, email us at citcampuswoden@act.gov.au

