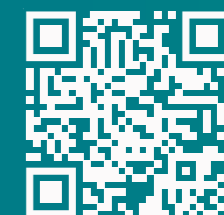




# CANBERRA HOSPITAL MASTER PLAN

[health.act.gov.au/canberra-hospital-master-plan](http://health.act.gov.au/canberra-hospital-master-plan)

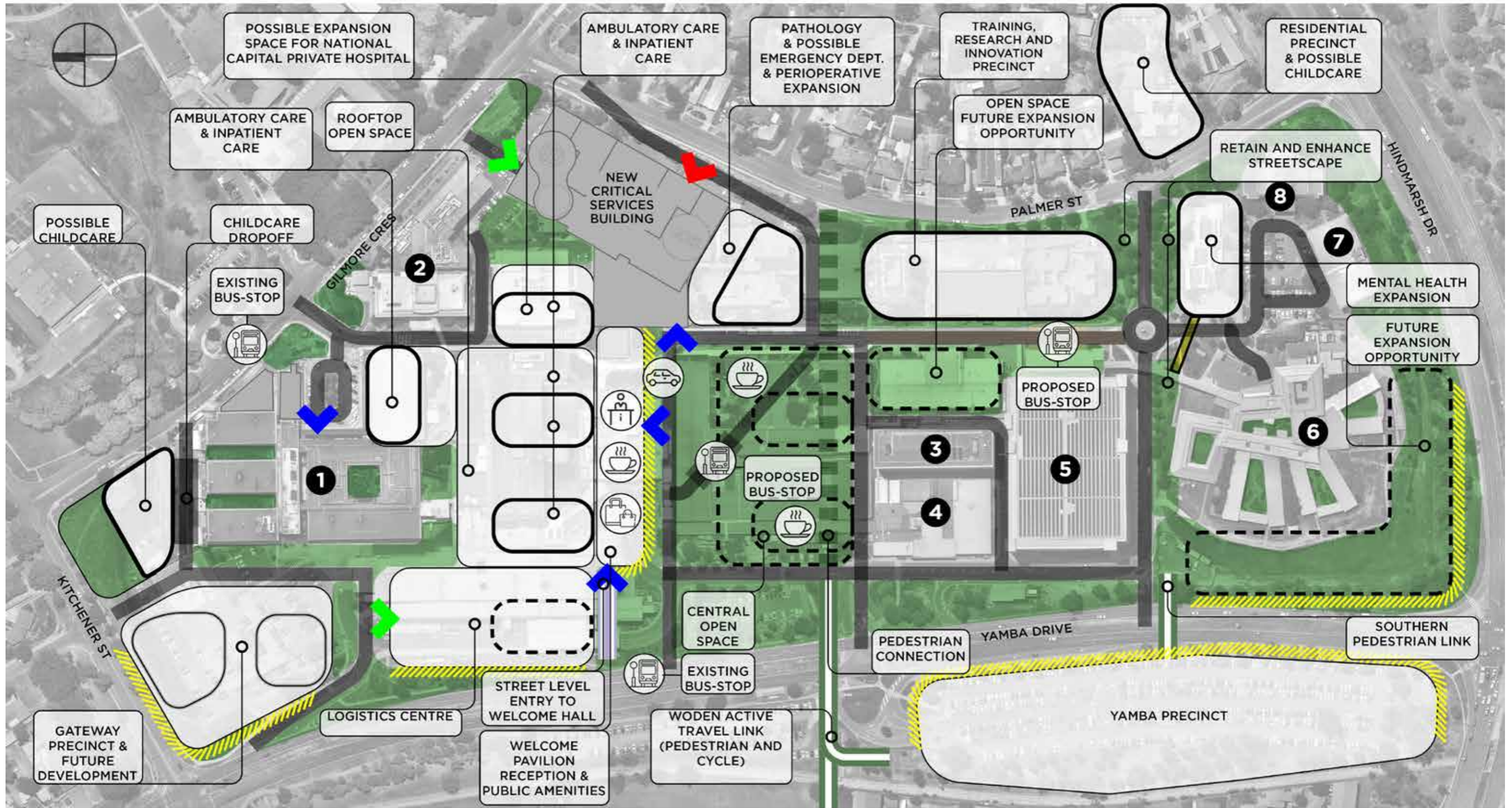




# CANBERRA HOSPITAL MASTERPLAN

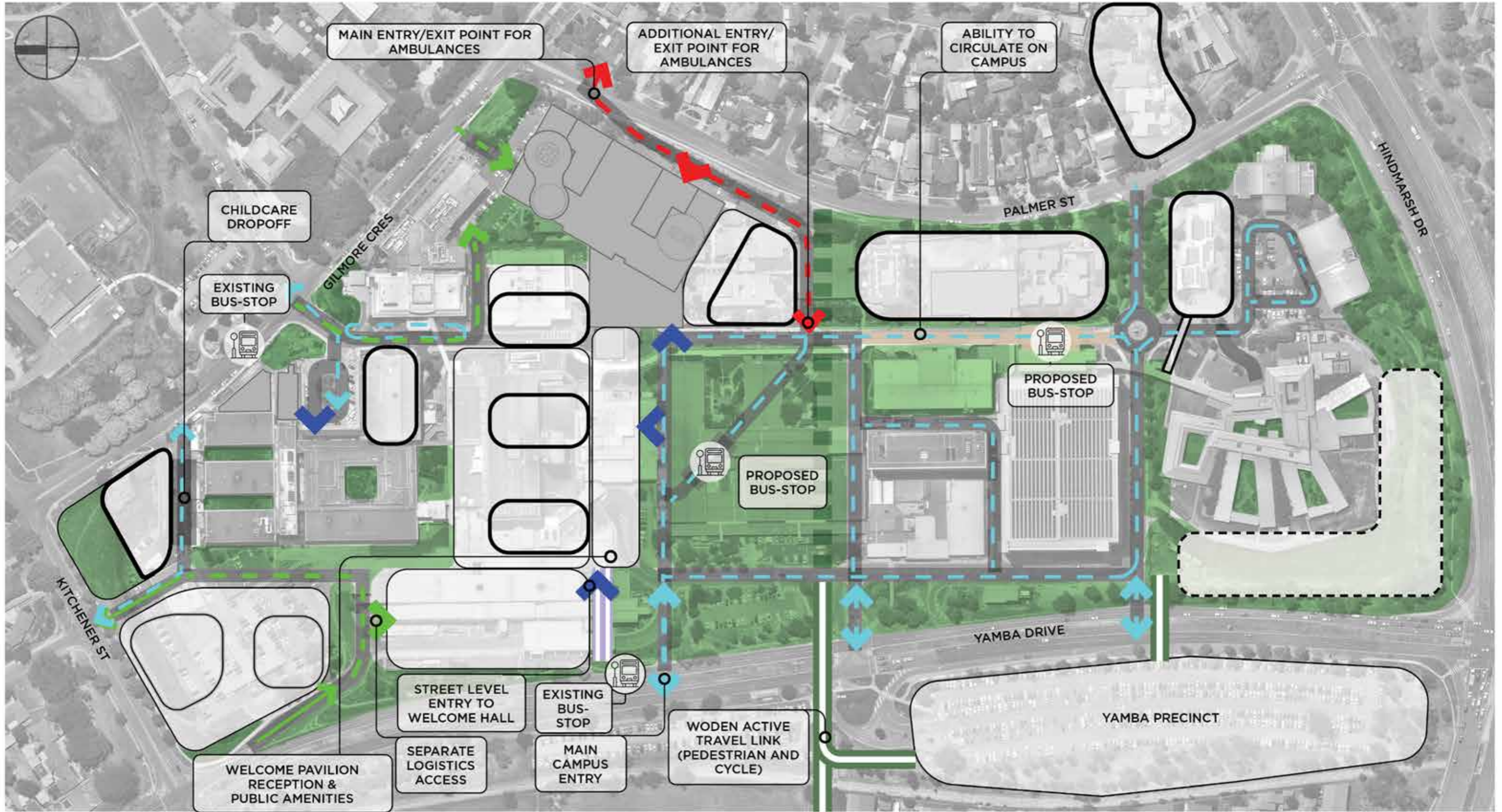
- 1 CENTENARY HOSPITAL FOR WOMEN & CHILDREN
- 2 NATIONAL CAPITAL PRIVATE HOSPITAL
- 3 REGION CANCER CENTRE
- 4 RADIATION ONCOLOGY
- 5 SOUTHERN CARPARK
- 6 ADULT MENTAL HEALTH UNIT
- 7 BRINDABELLA SPECIALIST CENTRE
- 8 RED CROSS HOUSE

- HIGH QUALITY FACADE
- NEW DEVELOPMENT
- FUTURE CAMPUS EXPANSION/RENEWAL
- PUBLIC ACCESS
- AMBULANCE ACCESS
- LOGISTICS ACCESS



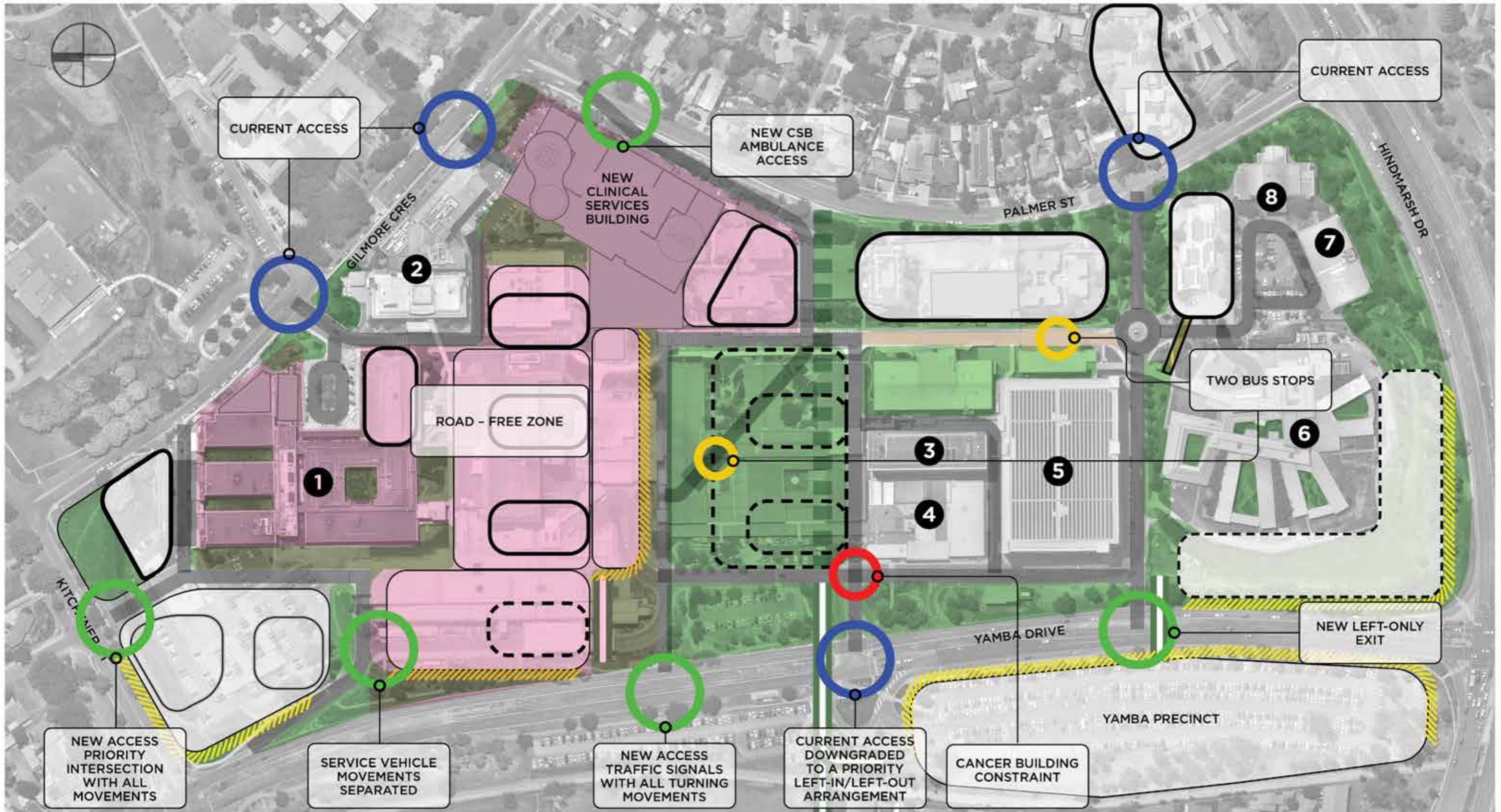


CONSULTATION WITH OTHER GOVERNMENT AGENCIES IS OCCURRING AT THE SAME TIME  
ROAD ALIGNMENTS SUBJECT TO CHANGE



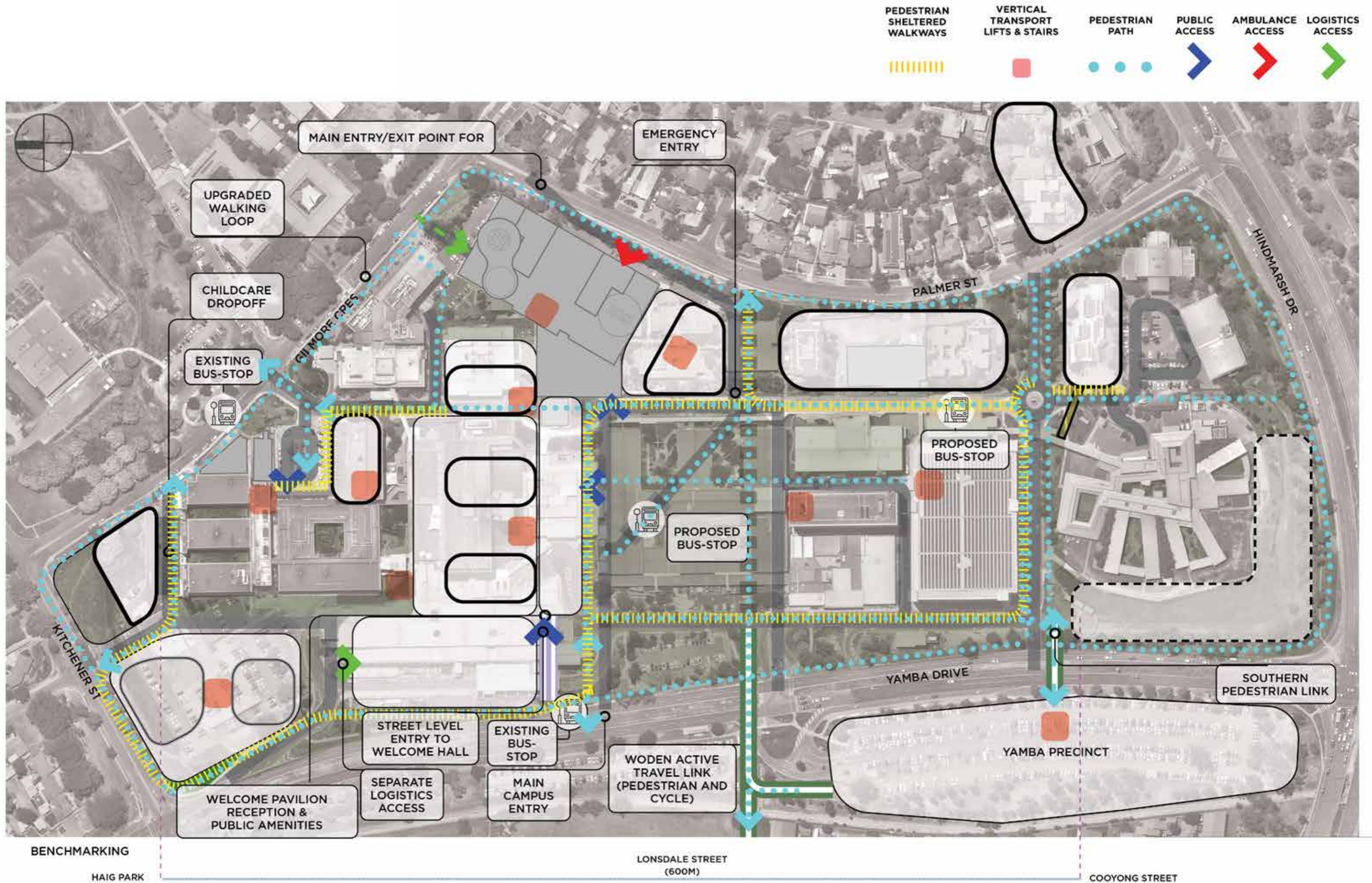
Access and Accessibility (Vehicles)





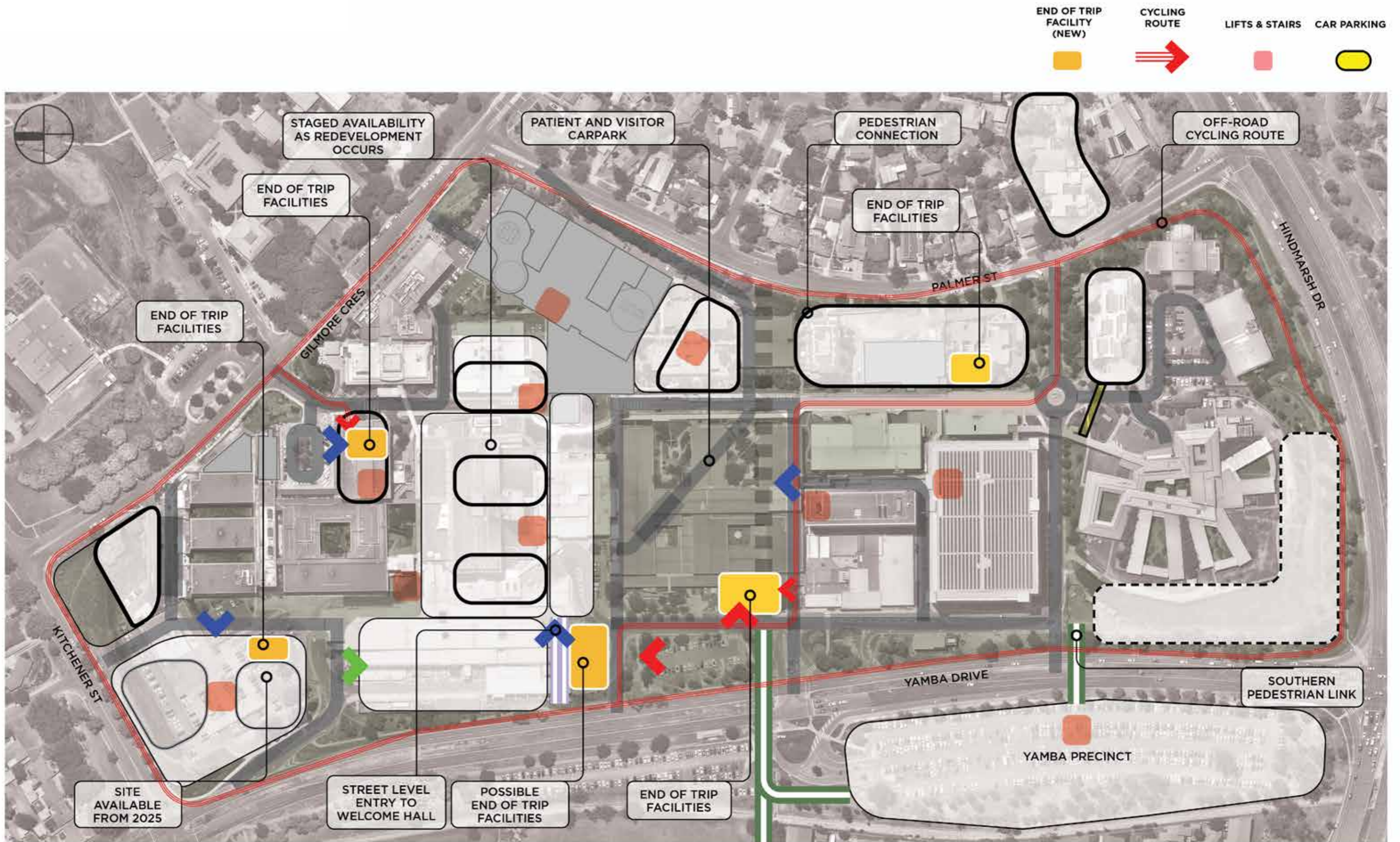
## Campus Intersections





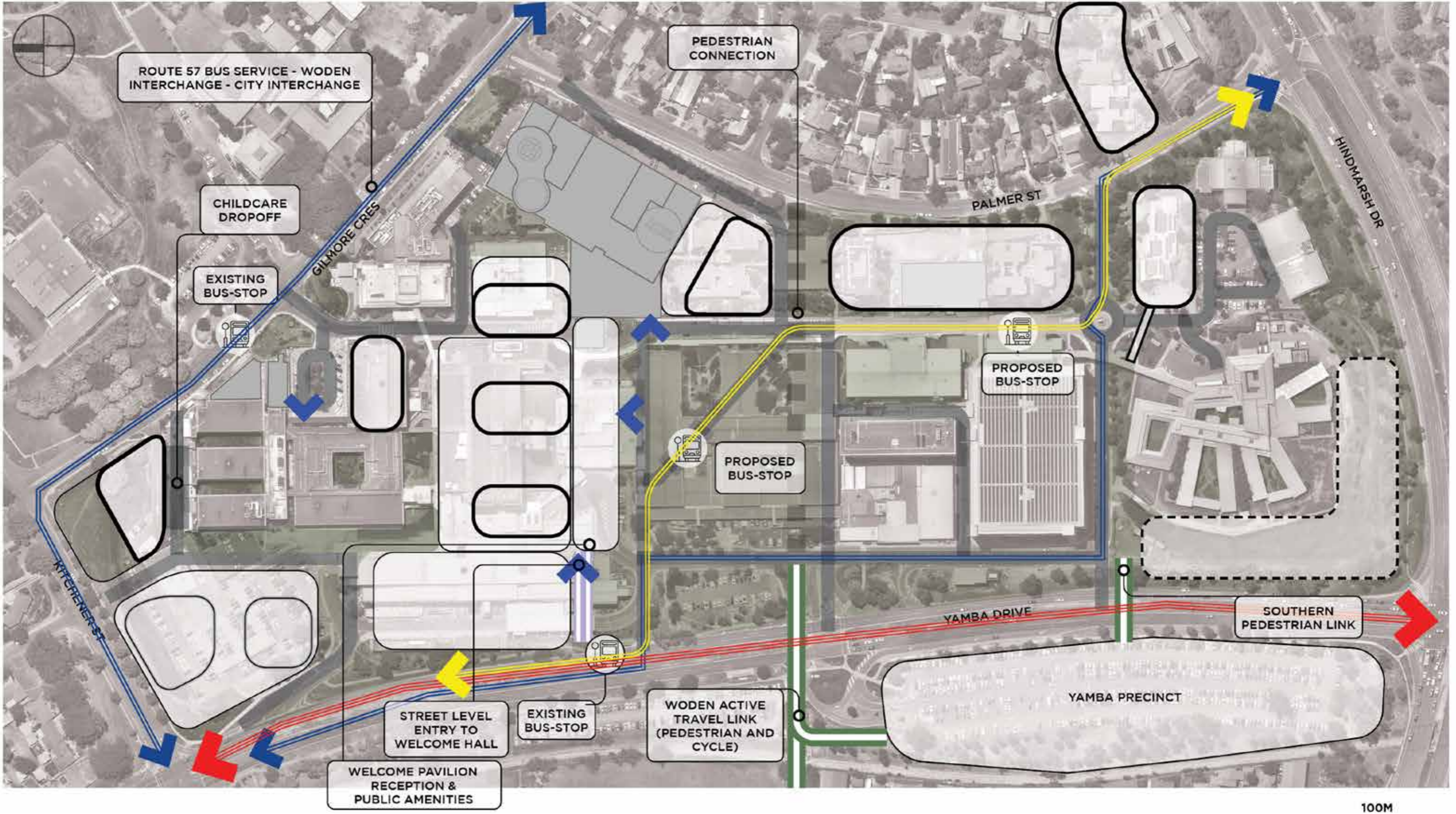
Access and Accessibility (Pedestrians)







CHS CURRENTLY PROVIDES A SHUTTLE BUS SERVICE, WHICH WILL CONTINUE TO FUNCTION

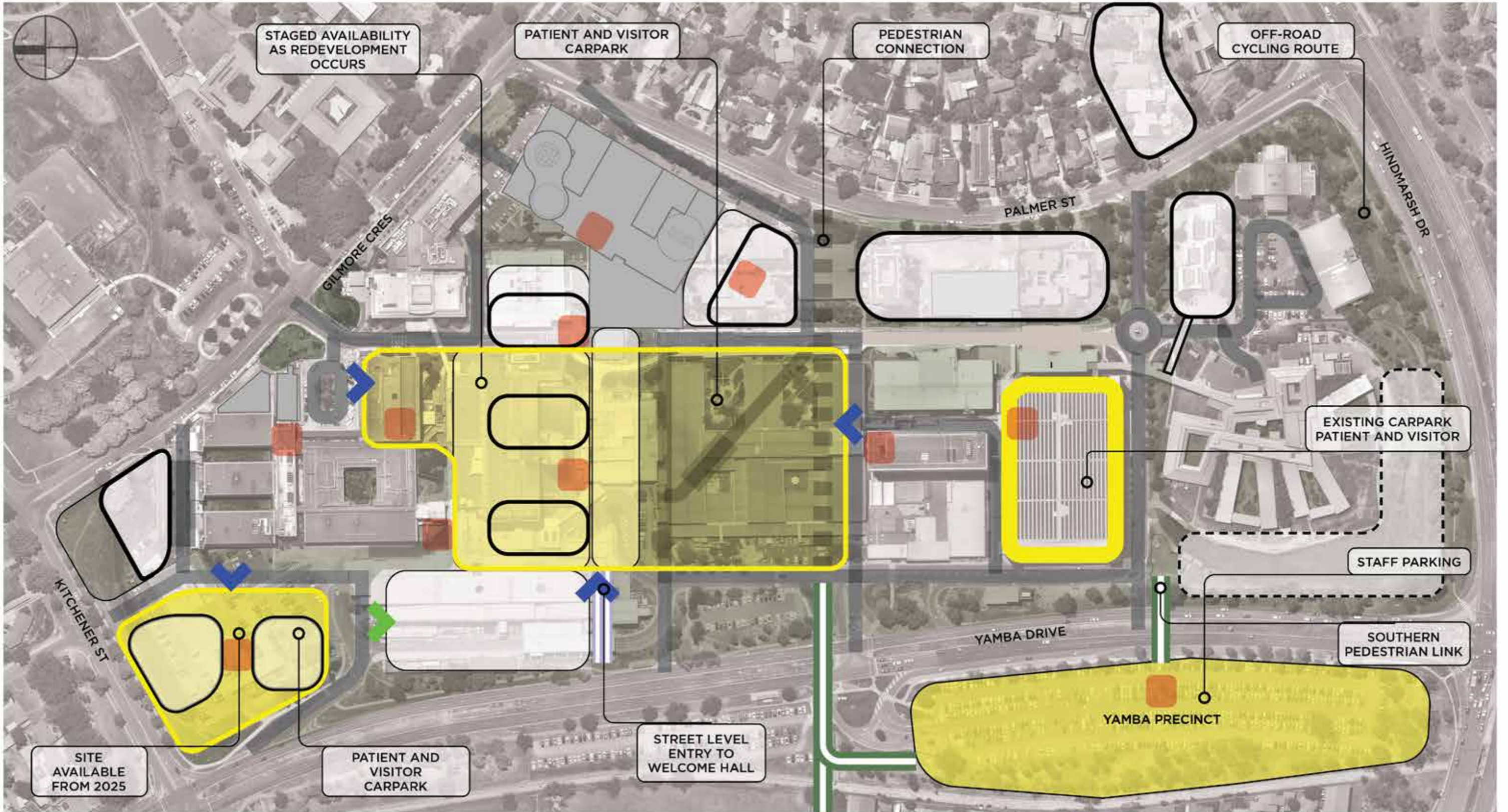


100M



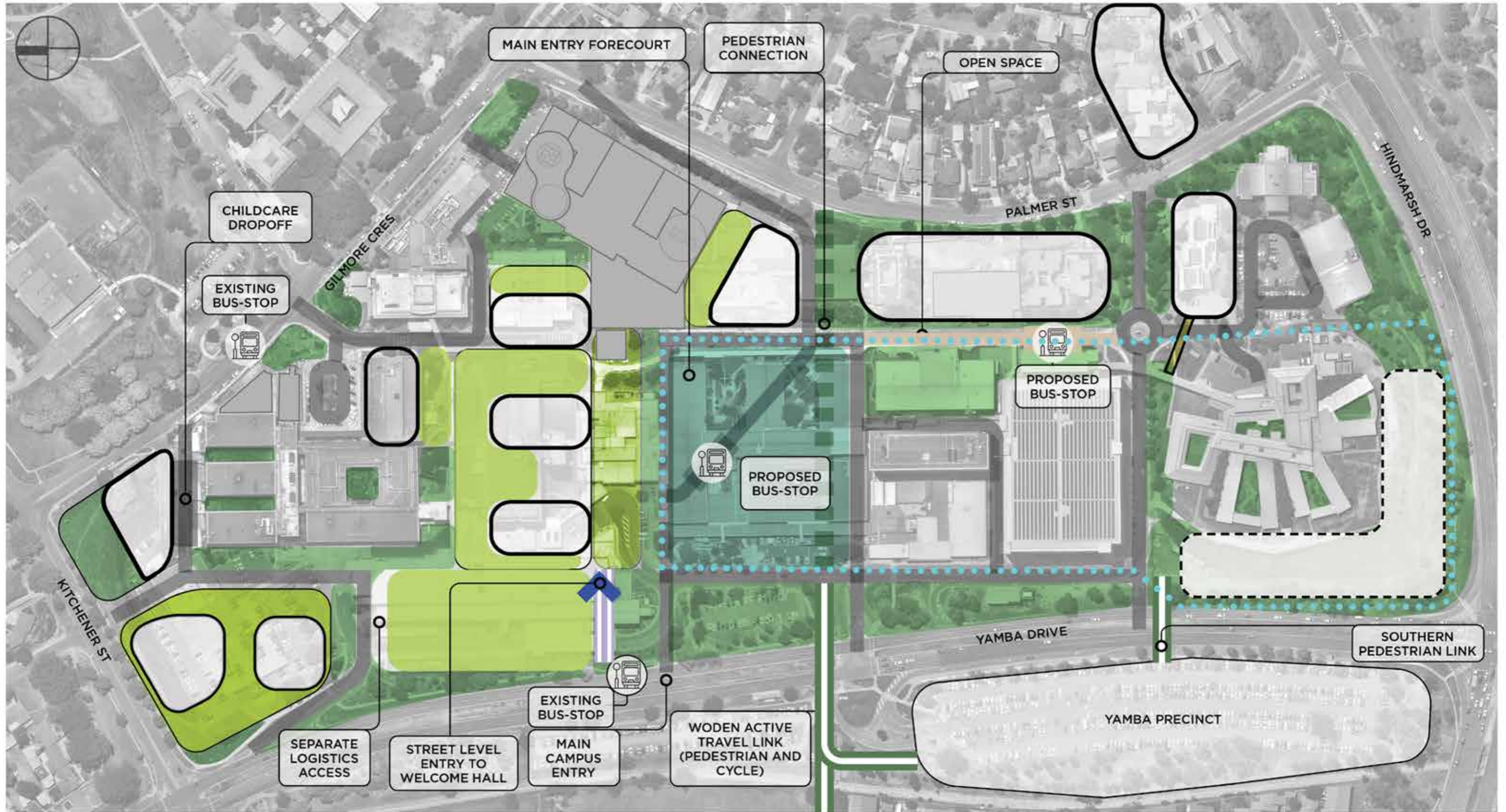
PUBLIC CARPARK ACCESS  
 LIFTS & STAIRS  
 CAR PARKING

INTERIM STAFF CAR PARKING WILL BE AVAILABLE ON CIT SITE (1500 SPACES)





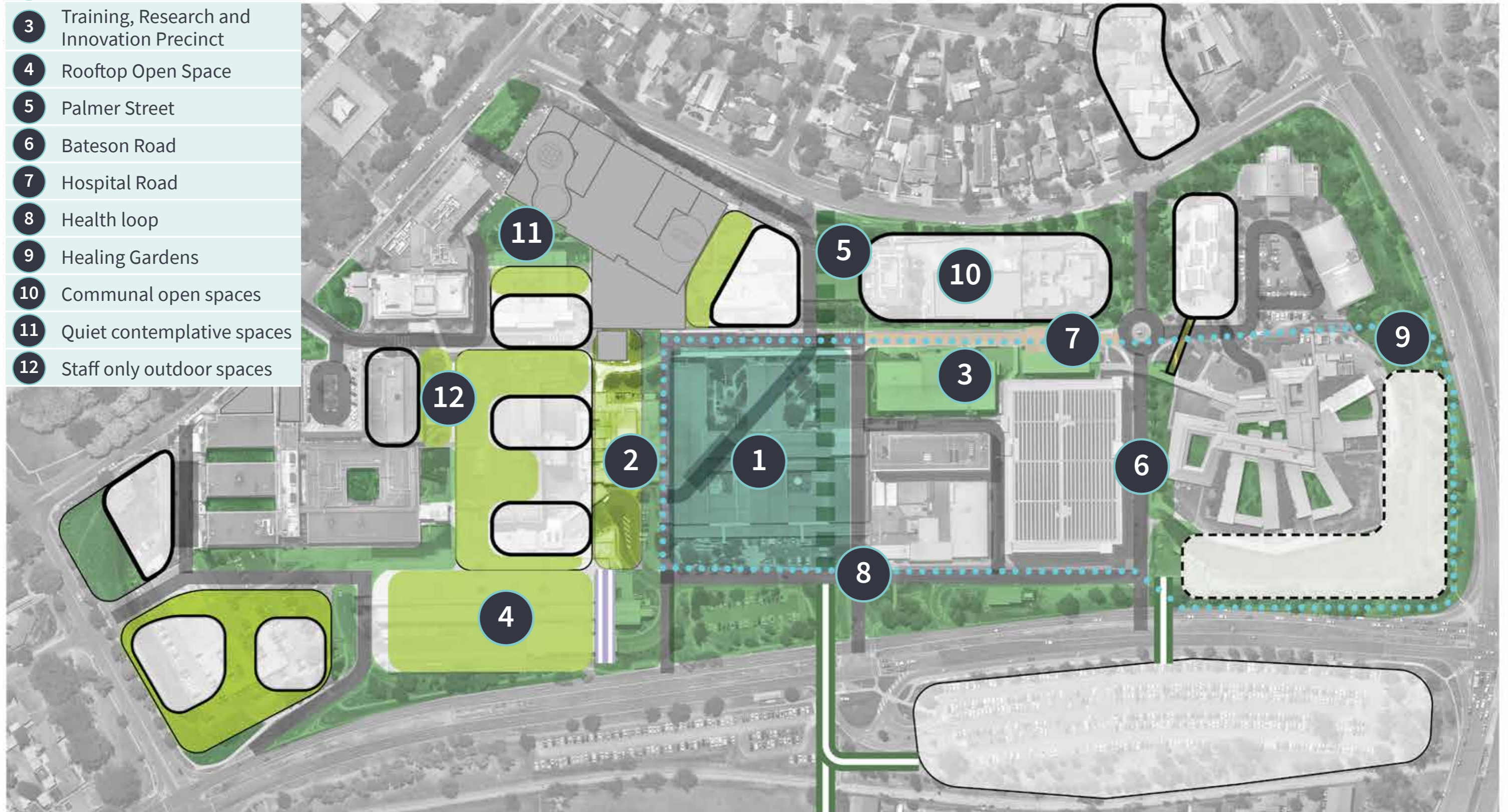
- MAIN ENTRY FORECOURT
- ROOFTOP OPEN SPACE (INCL. GARDENS)
- GREEN SPACE
- HEALTH LOOP EDU / CULTURE



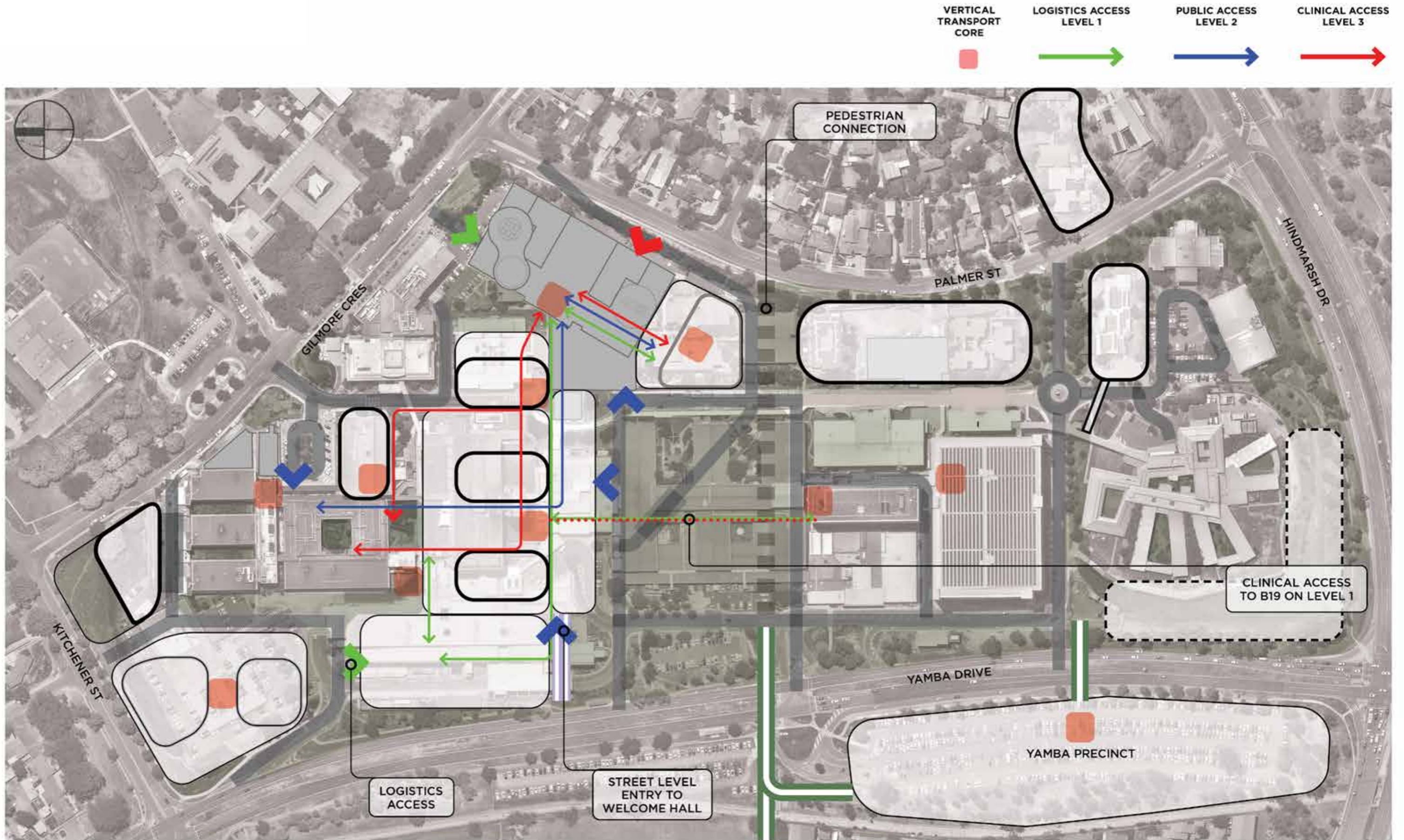


Legend

- 1 Central Open Space
- 2 Welcome Pavilion
- 3 Training, Research and Innovation Precinct
- 4 Rooftop Open Space
- 5 Palmer Street
- 6 Bateson Road
- 7 Hospital Road
- 8 Health loop
- 9 Healing Gardens
- 10 Communal open spaces
- 11 Quiet contemplative spaces
- 12 Staff only outdoor spaces







Horizontal Connectivity