

Light Rail Stage 2A City to Commonwealth Park Environmental Assessment

Chapter Summary: Noise and vibration

Noise and vibration are part of most construction projects. They are usually caused by activities such as excavation and earthworks, or by the use of equipment like jackhammers and concrete saws. Our approach to construction is that while noise and vibration are unavoidable, we can work to mitigate them. This chapter summary includes some of the planned mitigation measures surrounding noise and vibration management.

Noise

The existing noise environment where Light Rail Stage 2A will be built is typically urban in nature, with road traffic and urban 'hum' dominant throughout the area. Construction activities may generate additional intrusive noise from time to time. Construction works will generally occur between **7am and 6pm weekdays and 7am and 1pm on Saturdays**, which follows the ACT's noise standards and general construction hours. However, some works will need to be undertaken outside of these hours. This is usually to ensure worker safety or to avoid major traffic disruptions.

Key measures that will be implemented to limit intrusive noise include:

- orientating noise generating equipment as far as possible from people who could be affected by the noise
- implementing a 'no-idling' policy, by shutting down construction equipment and vehicles when not in use

What we will do



A Construction Noise and Vibration Management Plan will be developed. It will help identify disruptive activities and will outline all measures to manage noise and vibration



Any construction works proposed to take place outside 'normal' construction hours will require individual assessment and approval on a case-by-case basis



As part of construction updates, those that could be affected by potentially intrusive noise will be notified before works commence

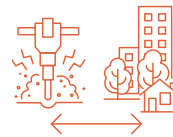


Those affected will also be provided with a 24/7 phone number to raise noise complaints or ask questions

Vibration

Vibration from equipment and construction works can result in human discomfort, and cosmetic or structural damage to nearby buildings. Measures will be in place to ensure these impacts are minimised.

What we will do



Works generating vibration will happen at safe distances from people and buildings, in accordance with the equipment guidelines and relevant Australian and international standards



Surveying will also be undertaken to assess the condition of buildings and structures before vibration intensive works begin, as necessary

During operation

The operation of Light Rail Stage 2A should not create any noise or vibration impacts greater than what is already experienced in the urban setting. Noise levels will still be monitored during operation and mitigation measures will be implemented if any impacts are detected.



Have your say

As part of the planning approval process for the Light Rail Stage 2A project, a Works Approval has been submitted to the National Capital Authority (NCA) and a Development Application has been submitted to the ACT Planning and Land Authority (ACTPLA).

To have your say on the project, you can make a submission to the NCA or ACTPLA.

Visit act.gov.au/lightrailtowoden to learn more about the project and how to have your say.

**BUILT
FOR
CBR**



Australian Government



ACT
Government