

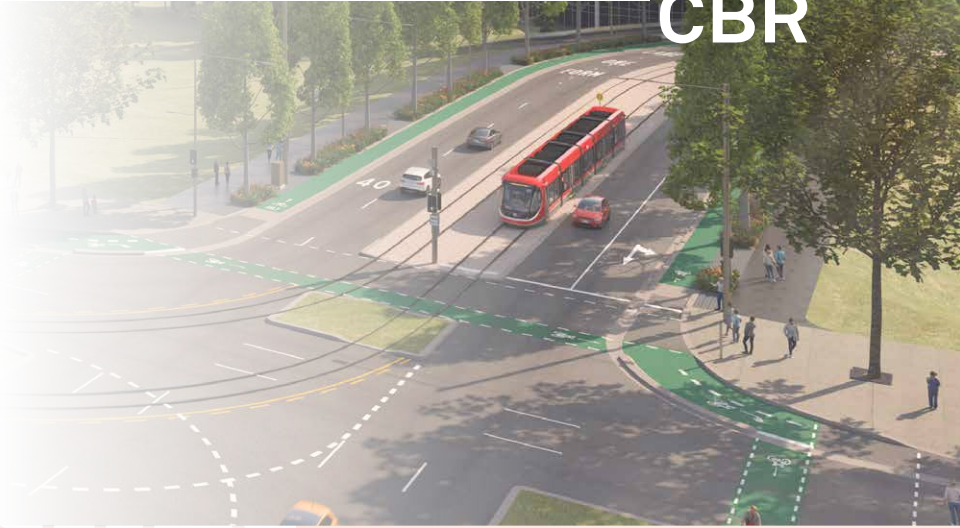
# Light Rail to Woden Construction Update

Monthly Look Ahead for November 2023

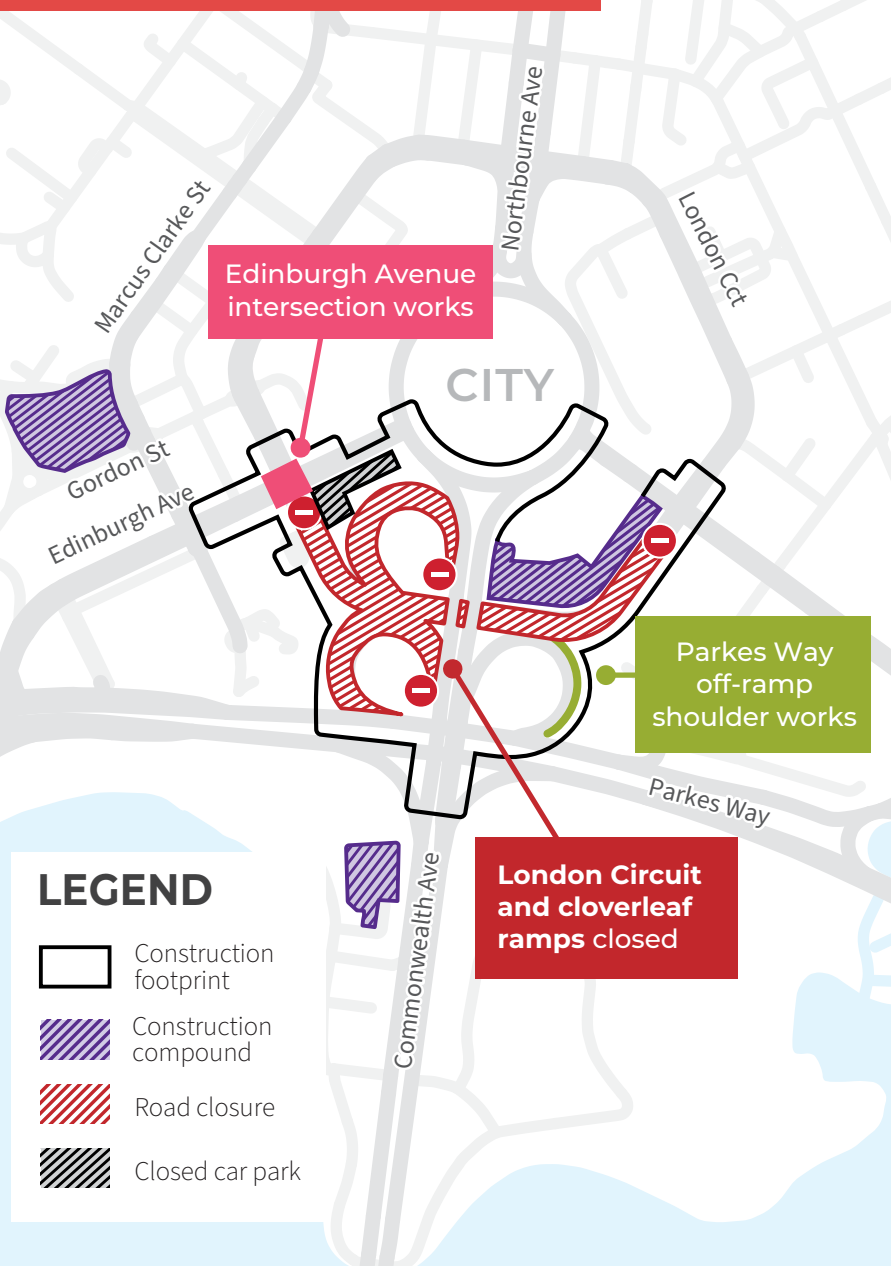


**BUILT  
FOR  
CBR**

The ACT Government is building light rail to Woden to help make Canberra a more connected, sustainable, and vibrant city. This construction look ahead provides a summary of expected activity in the work zones for the month ahead on Raising London Circuit – an enabling project for light rail to Woden.



## Site works November



### LEGEND

- Construction footprint
- Construction compound
- Road closure
- Closed car park

## Main works on Raising London Circuit

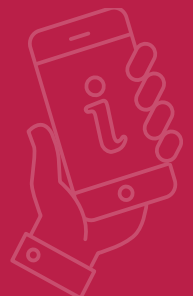
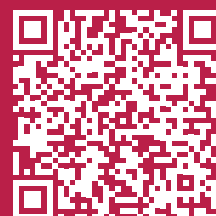
### Activities in November

- > Fill placement and earthworks, including heavy vehicle movements, will continue.
- > Relocation of stormwater pipes and structures and relocation and removal of communications and electrical services within the site footprint and at the intersection of Edinburgh Avenue and London Circuit.
- > Ongoing site preparation such as decommissioning streetlights, footpath, pavement, and kerb removal.

## Sign up for updates

Use this **QR code** to sign up and receive this look ahead and supplementary construction notifications direct to your inbox.

Travel impacts will be published at **Travel impacts - Built for CBR.**



## Overall project works in November

### Edinburgh Avenue and London Circuit intersection

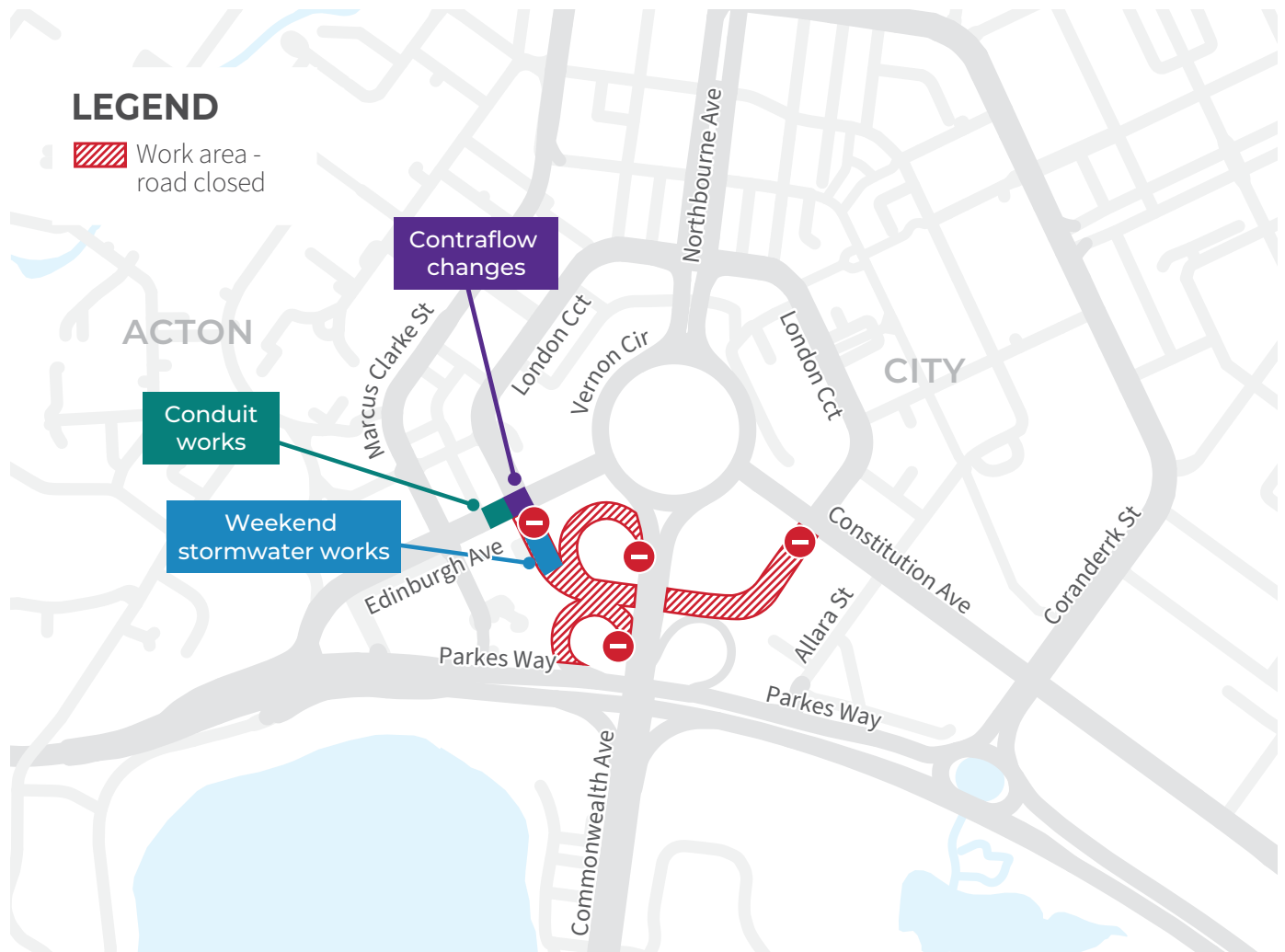
Work to modify the intersection of Edinburgh Avenue and London Circuit is required as part of the London Circuit closure.

Edinburgh Avenue is currently reduced to one lane westbound between London Circuit and Marcus Clarke Street. There will be traffic changes, long-term footpath

closures, works areas and barriers in place. Parking bays on the northern side of Edinburgh Avenue (adjacent to the Metropolitan Building) have also been removed.

During November, there will be works to reinstate pavement, footpaths and landscaping in this area.

Where traffic changes are required, traffic and pedestrian detours may be implemented. There will always be one lane in and out open to ensure local access, including to the QT Hotel. Pedestrian access around the area will also always be maintained.



### Night and weekend work

Throughout November, fill placement and earthworks will be carried out from **7am to 6pm on Saturdays**. Work will be undertaken within the closure area, but there may be an increase in trucks entering and exiting the site.

During November, stormwater works will be undertaken within the London Circuit closure area on weekends, from **6am to 6pm each Saturday and Sunday**. This work will include installation of stormwater pipes, pits and culverts.

### Utility works

In November, night work may be required around the site to undertake utility relocations and cutovers. This includes at the intersections of Edinburgh Avenue and London Circuit, and Constitution Avenue and London Circuit. This work will be carried out by the asset owner and may include some noisy activities. Properties will be notified directly where services will be impacted. While work is undertaken there will be lane closures and traffic control in place around the intersection, but local access will be maintained.



## Edinburgh Avenue and London Circuit

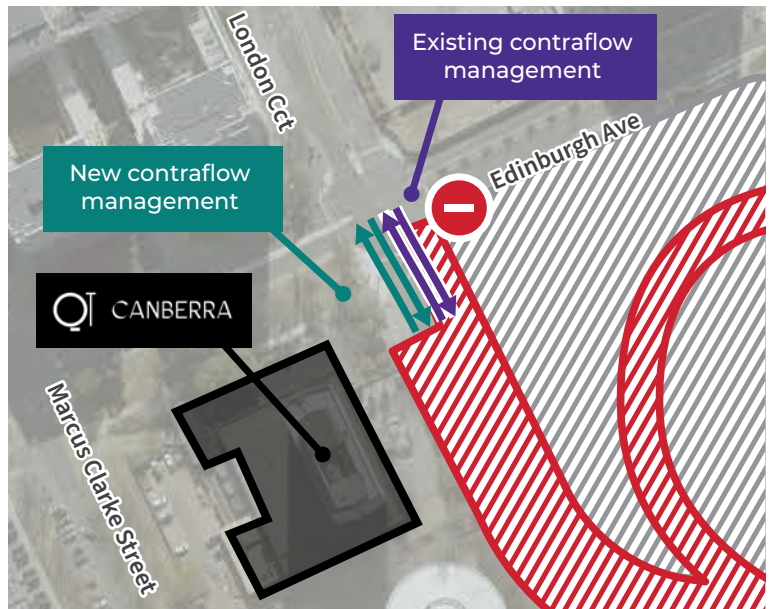
To undertake utility installation work, road closures will be required on Edinburgh Avenue between Marcus Clarke Street and London Circuit.

- > A full closure from **6pm Friday 10 November** until **8am Monday 13 November**
- > A partial closure (eastbound lanes) from **6pm Friday 24 November** until **8am Monday 27 November**
- > A partial closure (westbound lanes) from **6pm Friday 1 December** until **8am Monday 4 December**.

Works will be undertaken throughout these weekends, including overnight. The existing pavement will be removed, trenches to install conduits excavated, and installations carried out. Once this is complete the area will be reinstated.

While the intersection is closed, detours will be in place via Gordon Street and Marcus Clarke Street. Local access will be maintained for residents and the QT Hotel.

The intersection will operate under a stop/slow traffic arrangement over two nights, **Friday 17 November and Sunday 19 November, from 8pm to 6am** each night to undertake a reconfiguration of the QT Hotel access on London Circuit. Current access on London Circuit (from Edinburgh Avenue) for the QT Hotel will be changed to use what was the left lane for traffic exiting the hotel, while entering traffic will use what was the middle lane. Over these two nights, water filled barriers will be moved, current line marking removed, and new line marking completed.



### Other works

Throughout November there will be one night of maintenance work each week carried out on the Commonwealth Avenue side track. The side track will remain open, but there will be lane closures and traffic control in place during this work.

Other night works may need to take place in November. Notifications will be published on [act.gov.au/lightrailtowoden](https://act.gov.au/lightrailtowoden) to let you know when these works will take place.



To speak to someone in a language other than English telephone the Telephone Interpreter Service (TIS) **13 14 50**. It operates 24 hours a day, seven days a week.

## Contact Us

Produced by Major Projects Canberra | November 2023

@ [lightrailtowoden@act.gov.au](mailto:lightrailtowoden@act.gov.au)

▶ [act.gov.au/lightrailtowoden](https://act.gov.au/lightrailtowoden)

☎ 1800 956 409