

Canberra Hospital Expansion Project Update

May 2023

BUILT FOR CBR



Canberra Hospital Expansion Project reaches new heights

Canberra Hospital's new Critical Services Building has marked a major milestone by reaching its highest point at 40.35 metres.

The occasion was celebrated with a topping out ceremony held on the roof of the new building.

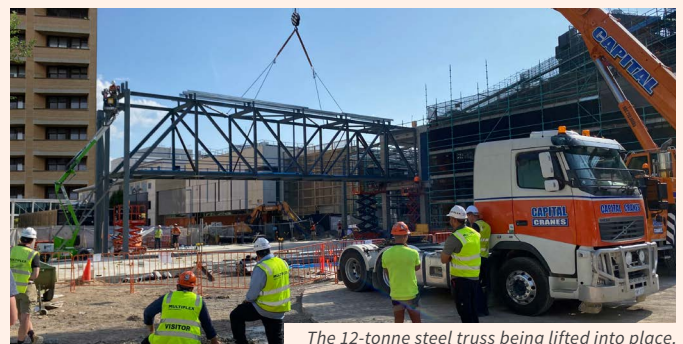
During the ceremony a native acacia melanoxyylon (Australian Blackwood) was hoisted to the top of the building, a traditional symbol that indicates construction has reached its highest point.

Minister for Health Rachel Stephen-Smith joined representatives from construction partner Multiplex, consumer groups and Canberra Health Services on the ninth level helipad for the topping out

ceremony and marked this significant milestone. The Critical Services Building will deliver a bigger and better Canberra Hospital, with a larger emergency department, more operating rooms, more treatment spaces and more intensive care beds.

Over the coming months work will continue on the external façade and waterproofing, as well as internal fit outs, services, artwork and landscaping. Construction of the Critical Services Building is expected to be completed in mid-2024.

Images from the Critical Services Building topping out ceremony held on 27 March, 2023.



The 12-tonne steel truss being lifted into place.

New corridor for improved clinical links

Secured in place high above the ground, the new steel truss (pictured) forms part of the new hospital building's Welcome Hall as a link bridge. This bridge will create a private clinical connection between the new and old hospital

buildings for use by hospital staff and patients. The link bridge will separate clinical and patient pathways from the public pathways improving hospital efficiency and patient privacy.

The truss structure was built and installed by local Canberra businesses. Weighing in at 12 tonnes, it was assembled offsite by Renrow Steel, trucked to site and then lifted into place by Capital Cranes.



Acknowledging the work of the Consumer Reference Group

The Canberra Hospital Expansion's Consumer Reference Group (CRG) was established to ensure the voices of patients, carers and their families are heard in the planning and development of the new Critical Services Building. The group served as a platform for members to provide feedback and suggestions on design, delivery and operation of the new Critical Services Building. They recently met to acknowledge and celebrate the contribution they've made towards improving the consumer experience in the new Critical Services Building.

Some of the design elements influenced by the group include:



Better patient rooms

The inclusion of carer zones and beds, with dimmable lighting, and better placed power points in more practical places.



New family spaces

The inclusion of a private family respite lounge (with kitchenette, meeting room and showers), and a patient and carer lounge.



New Aboriginal and Torres Strait Islander lounge

A first for Canberra Hospital in a centrally located position, with an outdoor space and yarning circle.



Improved accessibility

Better design in the patient room ensembles, service counters at wheelchair level, and more intuitive wayfinding and signage.



Emergency department improvements

A new reception centre for better patient flows, and an improved patient experience with a kid's play zones, and a sensory room.



Upgraded facilities, green spaces and public places

Outdoor green spaces, interiors, lockers and personal storage.

Additional funds to future proof the Critical Services Building

In February 2023, an additional investment of \$16.9 million was announced to future proof the building for pandemic situations as well as add more sterilisation services and enhanced imaging facilities to improve the hospital's efficiency and safety. This investment is part of the government's plan to deliver exceptional health care with state-of-the-art clinical equipment in new and renewed facilities.

The additional funding includes:

- > \$8.1 million towards pandemic safe measures in the fit out and design, including enhanced air conditioning to better filter and isolate the circulation of air.
- > \$4.9 million will be invested into the building's Central Sterilising Service Department. This means more equipment can be sterilised faster and more efficiently onsite, improving hospital service delivery.
- > \$3.9 million which will go towards state-of-the-art equipment, including a new Angio-CT machine which will enable imaging of patients in the operating theatre in real-time. This improves efficiency in theatres and patient safety outcomes.

Canberra Health Services' Jane Coventry with one of Canberra Hospital's newest state-of-the-art CT machines, the Canon Aquilion ONE / Prism CT, the first of its kind in Canberra.



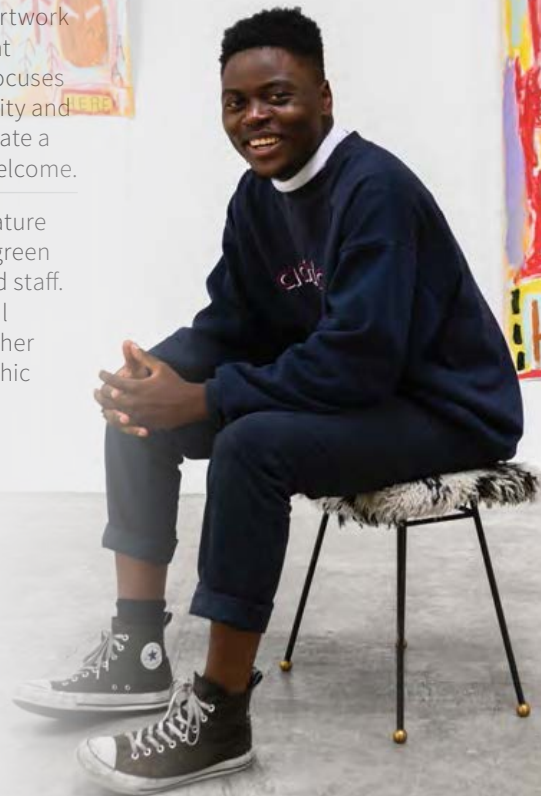
New artwork for Critical Services Building

The new Canberra Hospital is set to receive a creative facelift with the introduction of artwork installations which will be displayed across five priority areas in the Critical Services Building. The artists selected aim to create a calming and welcoming environment for patients, visitors, and staff.

The chosen artists whose work will be installed in the hospital include:

- > **Hannah Quinlivan** who will create artwork for the main public corridor, linking the new Welcome Hall to the Critical Services Building. Hannah's artwork celebrates the significant bodies of water in and around Canberra and the life that they bring to the city.
- > **Musonga Mbogo** will create artwork for the emergency department paediatric spaces. Musonga focuses on diversity, celebrating identity and a sense of self and aims to create a place where everyone feels welcome.
- > **Peta Kruger's** artwork will feature in an outdoor courtyard and green space for patients, visitors and staff. Peta creates bright and playful sculptural works informed by her previous experience as a graphic and jewellery designer.

- > To find out more about the artists, visit hospitalexansion.act.gov.au or scan the QR code.



Upcoming works update

In the coming months the hospital expansion project will continue with fit out, landscaping, art installations and the removal of the two tower cranes.

Now

Internal fit out underway

Façade and window installation

Soon

Crane removal

Steel structure for new reception and link bridge complete

Later this year

Art installations

Internal fit out complete

Major medical equipment installed

Furniture moved in

New services on the Canberra Hospital Campus

New Early Pregnancy Service at Centenary Hospital for Women and Children

A dedicated Early Pregnancy Service has opened at Centenary Hospital for Women and Children. The new service is for women and pregnant people with complications relating to early pregnancy.

There are more than 500 people who require hospital care each year for miscarriage or early pregnancy complications and this new three-bed unit offers a therapeutic healing space to receive care. The unit supports overnight stays, has separate treatment spaces and a waiting area for pregnant patients and their families.

A newly refurbished 15-bed Antenatal and Gynaecology Unit has

also opened and is located adjacent to the Early Pregnancy Service, allowing strong integration between the services and enabling staff to work across both spaces as needed.

For more information, visit the **Canberra Health Services website** or scan the QR code.



Designs for dedicated cancer research centre in Canberra unveiled

The ACT Government is expanding and improving cancer facilities in the ACT, with a new cancer research centre to be built within the Cancer Region Cancer Centre (CRCC) at Canberra Hospital. This project will fit out a 449 sqm research centre able to meet the needs of researchers, cancer patients and their carers. Once built, the CRCC will be able to provide treatment, research, supportive therapies and emotional support in a single, integrated facility.

The facility will integrate a research laboratory into a clinic space where patients are assessed for clinical trials, and sample collection can be seamlessly coordinated with lab technicians.

Construction of the cancer research centre is scheduled to begin later this year.

For more information visit **builtforcbr.act.gov.au/health/cancer-research-centre** or scan the QR code.



Content and images on this page provided by Canberra Health Services



Subscribe for **updates**

Scan the QR code to subscribe to project updates.

**BUILT
FOR
CBR**



Produced by Major Projects Canberra, April 2023.
Email: hospitalexpansion@act.gov.au

For more information visit:
hospitalexpansion.act.gov.au