

Building Light Rail to Woden Project Update

December 2023



Contract signed for Light Rail Stage 2A

Light rail from the City to Commonwealth Park (Stage 2A) has reached a major milestone with the signing of a contract with long term delivery partner Canberra Metro.

Construction can now start in 2024 to add three new stops at Edinburgh Avenue, City South and Commonwealth Avenue, extending the network by 1.7 kilometres and providing a greater connection between the city and the lake.

The alignment travelling along London Circuit will service more people needing to access the ANU, homes and businesses in City West and New Acton.

This project is jointly funded by the Australian and ACT Governments.

Read more about the three new stops inside. ▶



A message from Minister for Transport

The recent signing of the construction contract with Canberra Metro for Stage 2A is the next milestone in building light rail to Woden. It enables the ACT Government to continue working with the Australian Government to deliver mass-transit infrastructure to improve public transport for our rapidly growing city.

The extension of the popular light rail line will transform the southern part of the CBD into a better place for people with public transport connectivity to major employment and recreation precincts in City West, the ANU, City South, Acton Waterfront and Commonwealth Park.

Chris Steel MLA





Wire-free and green track design

Stage 2A will be delivered wire-free to counter the urban heat island effect and reduce the visual impact. The wire free design will contribute to the maintenance of an accessible, attractive, high quality and distinctive city centre.

Batteries will power light rail vehicles from Alinga Street to Commonwealth Park, then back to Alinga Street without needing to recharge. The energy consumed on that trip will then be replenished through recharging of the batteries via the overhead lines between Alinga Street and Gungahlin.

In a Canberra first, the light rail corridor to Commonwealth Park will include sections of green track. These track sections are areas where the light rail line sits within a bed of specially selected grass or plants instead of concrete.

On Northbourne Avenue, the green track will be planted with a low-lying species and forms part of the overall landscape design of Northbourne Place. Green track will also be located on London Circuit in front of the Melbourne Building and on Commonwealth Avenue.

Green tracks are effective in countering the urban heat island effect, reducing glare, absorbing more rainwater, and contributing to noise reduction.

Green track prototype coming soon...

Before construction of Stage 2A gets underway, a green track prototype will test the suitability of selected grasses, ground cover and tree species for Canberra's climate as part of the light rail track.

Construction of the green track prototype is almost complete. You will get a chance to see the prototype for yourself at the National Arboretum Canberra once it is completed.

Where to check out the green track?

South of the Village Centre and Margaret Whitlam Pavilion near Forest Drive at the National Arboretum Canberra.

Read more about the Green Track Prototype at builtforcbr.act.gov.au

Stage 2A delivers more trees, cycleways and walking paths



Better active travel connections



Increased tree canopy coverage



Bike racks available on light rail vehicles and at stops



Durable and attractive street furniture, paving and lighting



New off-road cycleways and pedestrian infrastructure for safer travel



Minimising waste and increased recycling during construction



Dedicated pedestrian paths nearby, off-street cycling and protected intersections



Use of local materials and suppliers during construction

Three new light rail stops for commuters

1 Edinburgh Avenue

Servicing residents and businesses in the area, along with the Australian National University.

2 City South

Improving access to the eastern and southern area of the city and supporting easier access to future development nearby.

3 Commonwealth Park

Offering a convenient way to reach lakeside events, attractions and parks.

Commonwealth Park stop



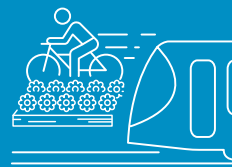
Stage 2A improves safety



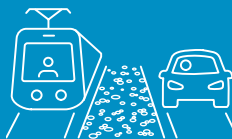
Two new **signalised intersections** on London Circuit at West Row and University Avenue which will provide safe and controlled pedestrian and cyclist crossings.



In-ground pedestrian lights in key locations to alert and remind pedestrians to cross light rail tracks safely.



Protected cycleways on newly designed intersections at London Circuit and Northbourne Avenue, and London Circuit and Commonwealth Avenue.



A cobbled median on London Circuit to help pedestrians and cyclists differentiate the light rail corridor from the roadway.

Full steam ahead on Raising London Circuit

Work is progressing on Raising London Circuit, with the southbound Commonwealth Avenue Bridge over London Circuit now demolished. To minimise disruption, a new side track (temporary road) ensures two lanes of traffic in each direction are maintained during peak hours.

An embankment is being constructed on the eastern side of London Circuit in place of the demolished bridge. Fill importation will continue for the following months. The permanent Commonwealth Avenue southbound lanes and a second side track on the eastern side will be built. On completion, southbound traffic will be diverted on the eastern side track and

northbound traffic will be diverted to the new road. The northbound bridge will then be demolished, allowing for the construction of the permanent northbound lanes.

Visit builtforbr.act.gov.au/travel-impacts to stay informed on changes to travel arrangements and sign up for construction updates using the QR code.



Creating gender sensitive urban design

Gender Sensitive Urban Design (GSUD) investigates how public spaces can be designed to address the level of comfort and risks experienced by women, girls and gender diverse people in urban environments.

Key design elements of Stage 2A have been developed with GSUD in mind. These include features such as quality wayfinding and signage, sight lines, and lighting at light rail stops and nearby public spaces. These elements will help people of all genders to move confidently and safely when using the light rail and surrounding public space during the day or night.



Expanding Canberra's Light Rail Vehicle fleet

Construction on the expansion of the light rail depot is nearing completion in Mitchell. The expanded depot provides space to retrofit the existing 14 light rail vehicles (LRVs) with battery technology, which will allow for wire-free running of the entire fleet.

Five new LRVs are currently in production and will come pre-fitted with battery technology known as an Onboard Energy Storage System (OESS). This technology will power vehicles on the wire-free Stage 2A track between Alinga Street and Commonwealth Park.

The new LRVs will help maintain a consistent light rail service while the existing vehicles are fitted with the OESS battery technology. This work is important to ensure an expanded depot and full fleet of battery-powered vehicles are ready ahead of services starting on Stage 2A.



Woden public transport interchange

Design improvements have been added to Woden's new light rail ready public transport interchange. Visit Built for CBR to find out more.



Subscribe for updates

To stay up to date on light rail project information, construction activity and travel impacts, scan the QR code and register your email.

**BUILT
FOR
CBR**



Light Rail Stage 2A is jointly funded by the Australian and ACT Governments.