

Australian Early Development Census ACT key findings 2021

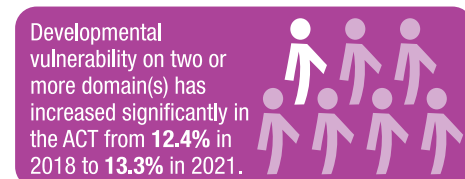
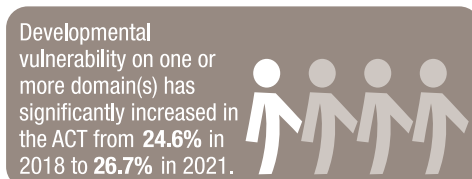
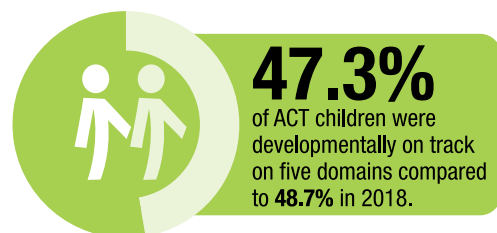
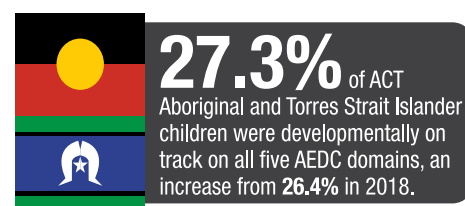
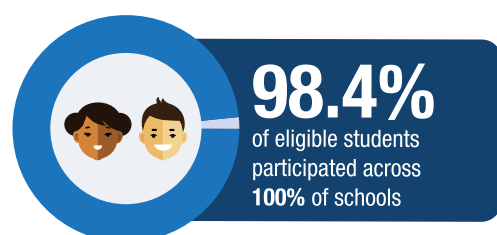
The Australian Early Development Census (AEDC) is Australia's only national census of children in their early years.

Since the first release in 2009, the AEDC has measured early childhood development across five domains. These domains form the foundations for later good health, education and social outcomes. The rich dataset of the AEDC provides us with an opportunity to reflect on what is working well and where we need to improve our approach to better support children and families.

From the latest results we know more ACT children are starting school with developmental vulnerabilities. There is more work to do to give every child in Canberra the best start in life and meet the increased need for early childhood supports and services in the ACT.

It is important that we continue to work together to use the AEDC data to assist our understanding of where Canberra's children are at and how we can better support them in the early years to open the door for every success in the future.

ACT 2021 results



Domains (percentage (%) of ACT children developmentally vulnerable)

