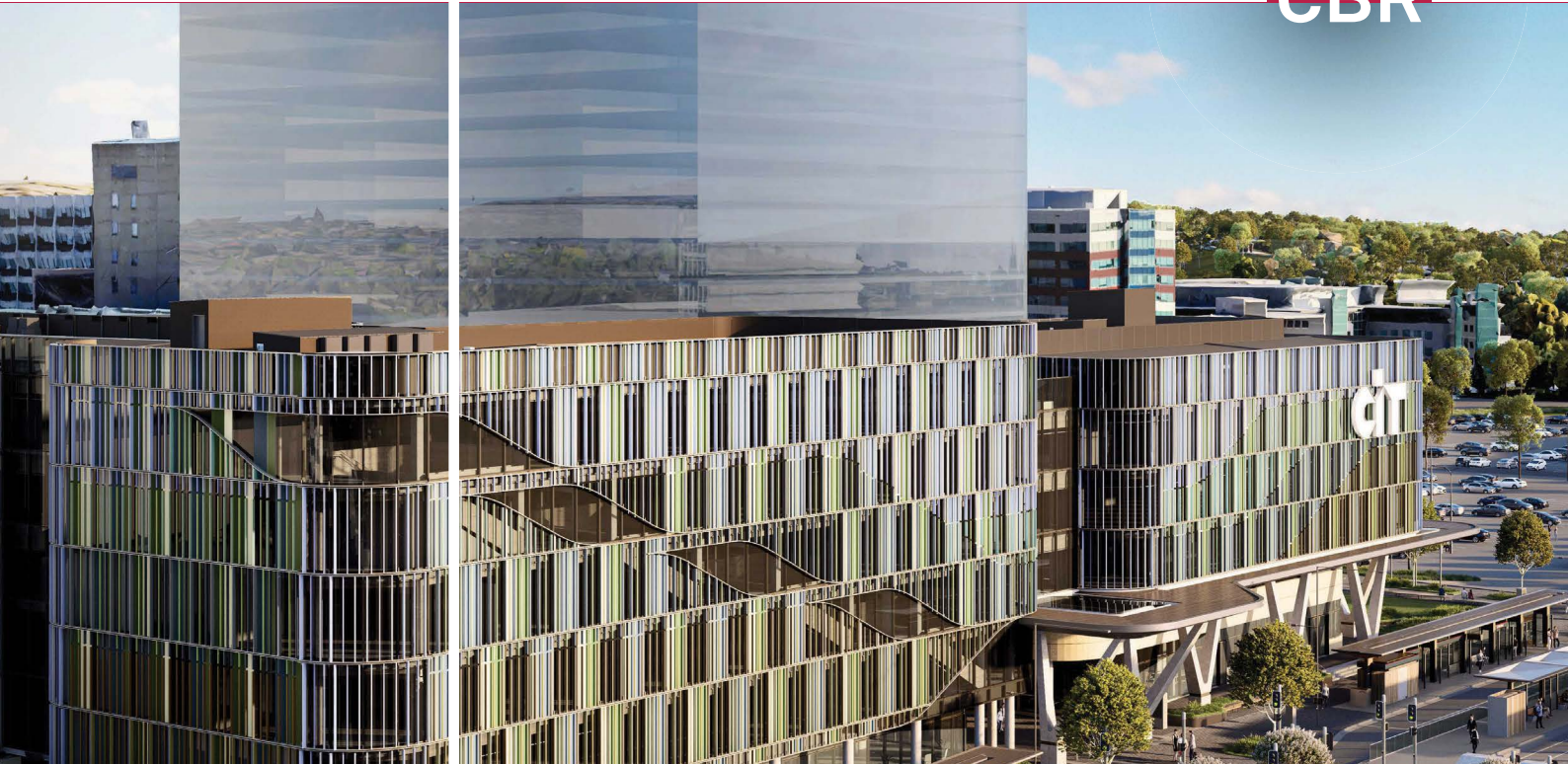


CIT Woden Campus Project Update

April 2024



**BUILT
FOR
CBR**



CIT Woden Campus continues to take shape

The construction of the CIT Woden Campus and new public transport interchange is progressing, with the sustainable cross-laminated timber frame soon to be completed. Canberrans can now get a glimpse of the future state-of-the-art CIT Woden Campus by exploring the fly-through video.

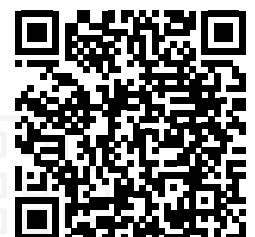


Take a virtual tour

Have a first look by taking a virtual tour around the new CIT Woden Campus and new public transport interchange currently under construction in the Woden town centre. Take a closer look at the

public spaces, the building's façade, the new features and the facilities in the area.

Scan the QR code or head to act.gov.au/citcampuswoden to see the virtual fly-through!





Have YourSay on naming public spaces

Canberrans are invited to help name the public spaces at the new CIT Woden Campus.

Three new outdoor areas will offer sunny break-out locations, outdoor seating and dining, native gardens and gathering spaces for students and the community to enjoy.

Naming these spaces will improve wayfinding for students, staff and visitors across the CIT Woden Campus.

Place naming provides an opportunity to create long-lasting meaning and connection between these important public spaces and the Woden community.

For more information scan the QR code or visit the YourSay website at: yoursayconversations.act.gov.au

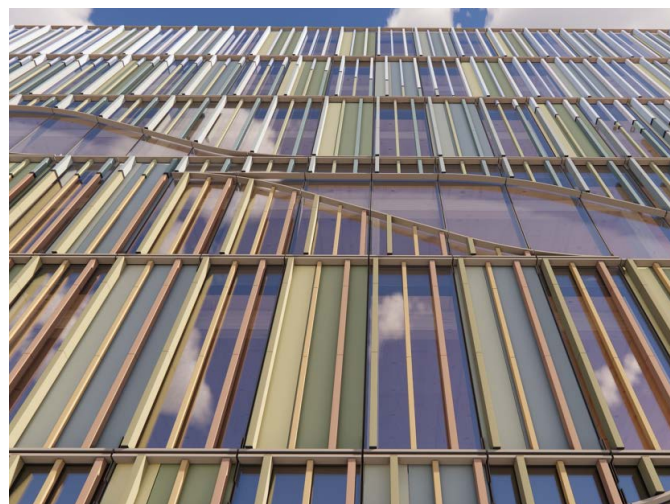


CIT building façade walking the ridgeline

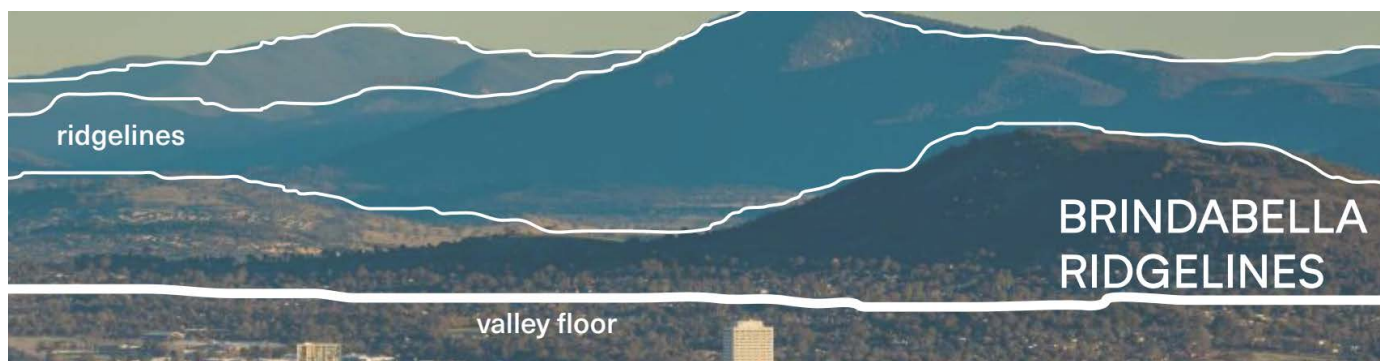
The main campus building will be a showcase of innovative design featuring vertical terracotta battens placed at different angles, creating a dynamic look.

The design, named “Walking the Ridgeline,” was created in partnership with Yerrabingin, a First Nations cultural heritage agency. The design imitates the Brindabella ridgelines and draws inspiration from the rivers and native gum trees around Canberra. This design also influences the layout of bleacher seating and stairs inside the building.

Depending on your viewpoint, the façade will appear open and inviting or solid and robust. These angles will allow natural light to filter through, creating a captivating interplay of light and shadows and a calming space for students and staff to enjoy.



▲ Design render of the multi-coloured terracotta battens





Artful welcome on Easty Street

Even the most practical and functional facilities can be transformed with art.

The ACT Government commissioned Killara Art, an Aboriginal owned and family operated business based in Canberra, to design the feature on the new bus driver facilities block on Easty Street.

The artwork, created by Steven Kennedy, features a goanna, representing the expansion of the Woden region and depicts three meeting places for people in the surrounding areas to gather with friends, family, and acquaintances.

The two goannas represent Steven's totem and placed in this piece in memory of his late grandfather and brother.

◀ *Artist Steven Kennedy at his Easty Street art installation*

Sustainable timber – good for the environment and mental health

Timber is a renewable building resource with immense environmental, learning and wellbeing benefits. At the CIT Woden Campus, the main building's structure, floors and architectural finish are crafted from cross-laminated timber sustainably sourced and manufactured in Australia.

Cross-laminated timber is produced by layering smaller timber sections, creating a sustainable structural solution. Compared to concrete, timber is lightweight and holds carbon throughout its life.

In total, the CIT Woden Campus will include **1200 cubic metres of timber, resulting in 7,508 tonnes of CO² retained.**

Beyond the environmental benefits, timber creates a calm and soothing indoor atmosphere. The natural warmth of timber mimics the benefits of being in nature, reducing stress and fostering positive social interactions. Timber interiors also promote learning and creativity and as a result, timber has become a popular material for commercial and educational facilities across Australia.

Cross-laminated timber installation



Woden's active commuting advantage

While there is a lot of construction activity taking place in Woden, the network of accessible paths will still get you where you need to go.

Active transport, like cycling or walking, offers numerous benefits including improved fitness, reduced environmental impact and cost savings.

Check out the latest precinct map at www.act.gov.au/citcampuswoden

To see the Canberra cycle network map visit www.transport.act.gov.au



Women in Construction program participants at their graduation.

Celebrating the 2023 Women in Construction graduates

After 12 months of learning and on the job training, 15 participants in the Lendlease Women in Construction (WIC) program have successfully graduated and are continuing their careers in construction industry.

In December the group was joined by family, friends and other representatives to celebrate their achievement at a graduation ceremony.

The Lendlease Women in Construction Initiative is one of eight projects being supported by the 2023 Skilled to Succeed Innovation Grants program. The program assists women and gender-diverse people gain the necessary skills, equipment and licenses required for entry into the construction industry.

Seven of the 15 Women in Construction program graduates have already been offered a traineeship under the Certificate II Construction pathways with Lendlease or Lendlease subcontractors working on the CIT Woden Campus Project. The remaining eight are considering other options including further training, apprenticeships, and other related work.

Looking beyond bricks and mortar Project social objectives

The ACT Government and construction delivery partner, Lendlease, remain committed to the project's social objective targets to create a more empowered and diverse construction workforce.

The CIT Woden Campus Project focuses on three areas for social and industry improvement: women in construction, apprentices and traineeships and supporting Aboriginal and Torres Strait Islander businesses.

To achieve these targets, multiple training programs, such as the Women in Construction program, have been created. This provides groups that traditionally face barriers in the construction industry the opportunity to succeed in their field.

If you're interested in being involved in one of the programs contact citwoden@lendlease.com

Project social targets

15% Women in Construction

10% Apprentices and traineeships

4% Aboriginal and Torres Strait Islander workers and businesses



Subscribe for updates

Follow the QR code to subscribe to regular Project Updates and Construction Activity Updates.

BUILT FOR CBR