

# CANBERRA HOSPITAL EXPANSION PROJECT UPDATE



NOVEMBER 2021



## CONSTRUCTION STARTS ON CANBERRA HOSPITAL EXPANSION'S CENTREPIECE BUILDING

▲ Groundbreaking ceremony on 1 November that included Minister for Health Rachel Stephen-Smith (centre) and ACT Government and Multiplex representatives.

**Canberra Hospital's new Critical Services Building is now under construction.**

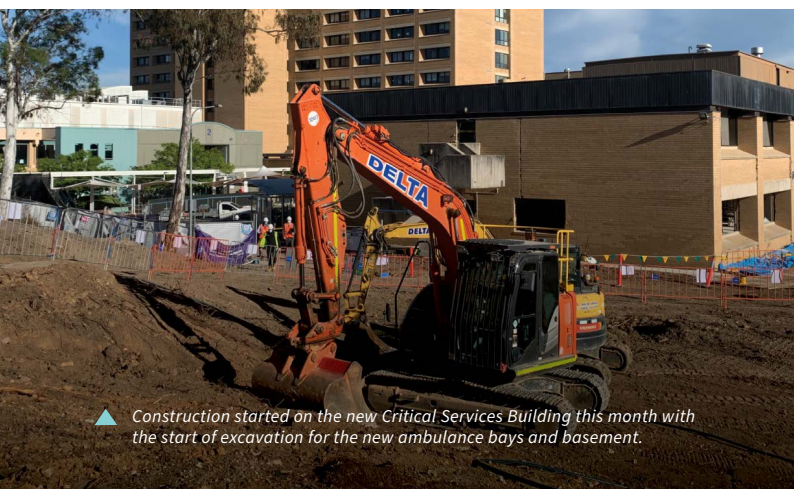
Following more than 18 months of preparation to get the hospital campus ready for construction, hospital staff, patients and visitors will notice visible changes on the site as the project comes to life. The new building will be an 8-level structure located in the north-east corner of the Canberra Hospital campus, linking back to the existing hospital building.

This construction milestone means that, in just a few years time, Canberrans will have access to the very best modern hospital facilities with more beds, more treatment spaces and a bigger emergency department.

The project is part of an ongoing transformation for the Canberra Hospital campus. A master plan for the campus will be released soon.

**Take a tour and see your new hospital building.**

Go to [hospitalexansion.act.gov.au](https://act.gov.au/hospitalexansion) to watch a new animation showing construction of the new building from the ground up.



▲ Construction started on the new Critical Services Building this month with the start of excavation for the new ambulance bays and basement.



▲ Artist's impression of the completed Critical Services Building, viewed from the corner of Palmer Street and Gilmore Crescent.

## INSIDE THIS UPDATE

- ▶ Development Application approved
- ▶ COVID-safe construction
- ▶ Demolition of Buildings 5 and 24
- ▶ Prototype Shed under construction
- ▶ Traffic changes for local residents and visitors

## LOCAL JOBS UPDATE

The ACT Government's investment in the Canberra Hospital Expansion Project includes the creation of more than 600 local construction jobs for Canberrans.

- **100 jobs** have already been created through the construction of the Canberra Hospital's new Building 8 and other enabling works projects across campus to prepare for construction of the main building.
- **11 new** trainee, apprentice and graduates are already working on the new Critical Services Building.
- **More than 20** job seekers are being provided with pre-vocational and other support to get them ready for immediate employment with many more to come as construction on the project ramps up.
- **Nearly all** tradespersons currently on the construction site are local to the ACT region.
- **The majority** of sub-contractors engaged on the site are local ACT businesses.
- A shopfront and training facility will soon be coming to Woden to recruit and train even more workers.
- Job seekers can email [canberra@theconnectivitycentre.com.au](mailto:canberra@theconnectivitycentre.com.au) for more information.
- Local businesses should search 'Canberra Hospital Expansion ICN gateway' for upcoming sub-contracting opportunities.



## FAREWELL TO BUILDINGS 5 AND 24

To make way for the new Critical Services Building, two other buildings on the campus have been demolished.

A small smoking ceremony conducted by Ngunnawal Elder Warren Daley in August marked the cleansing of the site before demolition commenced.

The ceremony acknowledged the traditional custodians of the land, cleansed the site prior to the start of hard demolition works and protects the spirits of people working on the site.

Approximately 95% of debris from the demolition is being recycled with only a minor portion requiring disposal to landfill.

Demolition debris including bricks, concrete, timber and metals are either recycled using local facilities or by providing materials directly to subcontractors.

Demolition of Building 24 is now complete, with Building 5 demolition nearing completion.

Watch the demolition in action at [hospitalexpansion.act.gov.au](https://www.hospitalexpansion.act.gov.au)

◀ *Top image: Ngunnawal Elder Warren Daley conducted a smoking ceremony prior to the start of hard demolition of Buildings 5 and 24.*  
*Bottom image: Demolition started on the east wing of Building 5 in August 2021.*

## COVID SAFE CONSTRUCTION ON SITE

To ensure a safe construction site is maintained, Multiplex and all subcontractors have COVID-19 safe plans in place. Procedures include social distancing, hand hygiene, mandatory face masks, daily cleaning and staggered staff shifts.

The construction site is also using innovative technology in the fight against COVID-19 with all workers wearing badges that track their location as they move around the site. This allows potentially exposed workers to be immediately traced and notified if an outbreak occurs.

The Multiplex team at the Canberra Hospital Expansion site is 100% fully vaccinated.



## WODEN RENEWAL INFORMATION SESSION

A public information session will be held soon to outline some of the exciting improvements and projects taking shape around Woden including the new CIT Woden Project, Light Rail and Canberra Hospital Expansion. The event will be attended by Minister for Transport Chris Steel and representatives from across government.

For more information and details go to [yoursayconversations.act.gov.au/woden-renewal](https://yoursayconversations.act.gov.au/woden-renewal)

# 18 MONTHS OF CONSULTATION ACHIEVES PROJECT APPROVAL

Following a thorough assessment and review, the development application (DA) for the Critical Services Building was approved in August.

To achieve this approval, more than 18 months was spent refining the design of the new hospital building to reflect the feedback from ongoing consultations with hospital users, clinicians, families, carers and local residents.

More than 250 user group workshops were held with clinicians, while local community and consumer reference groups met regularly and will continue to do so throughout construction.

A 10 week pre-DA consultation invited Canberrans to have their say on the proposed designs earlier this year. Your feedback covered 10 major themes including amenity, building design, parking, wayfinding and landscape design.



**4,052**  
VISITS  
TO YOURSAY  
PAGE



**57**  
SURVEY  
RESPONDENTS



**45**  
WRITTEN  
SUBMISSIONS



**753**  
COMMENTS  
COLLECTED

**To those who contributed, thank you for your feedback and guidance on this very important project for the future of Canberra's healthcare.**

▼ Construction of the Prototype Shed at the old CIT Woden site.



## WHAT'S THAT SHED?

There's something big popping up on the corner of Hindmarsh Drive and Ainsworth Street at the old CIT Woden site.

It's a temporary prototype shed that will house examples of the types of rooms and clinical spaces that will be included in the new Critical Services Building.

This helps to ensure the clinical facilities in the new building are set up and fitted out in the best possible way.

Next year Canberra Hospital staff and consumers will be invited to take a look inside the shed and test out the functionality of the spaces, such as

an operating theatre, ICU bay, resuscitation bay, equipment zones and staff stations. Staff will also undertake clinical training in a simulated space to ensure the actual rooms constructed in the new Critical Services Building are fit for purpose.

### The prototype shed will include:



# CHANGES TO TRAFFIC AND PEDESTRIAN ARRANGEMENTS

A number of changes to traffic and pedestrian arrangements are now in place to facilitate construction of the new Critical Services Building and other infrastructure works around Canberra Hospital.

## CONSTRUCTION SITE ENTRY

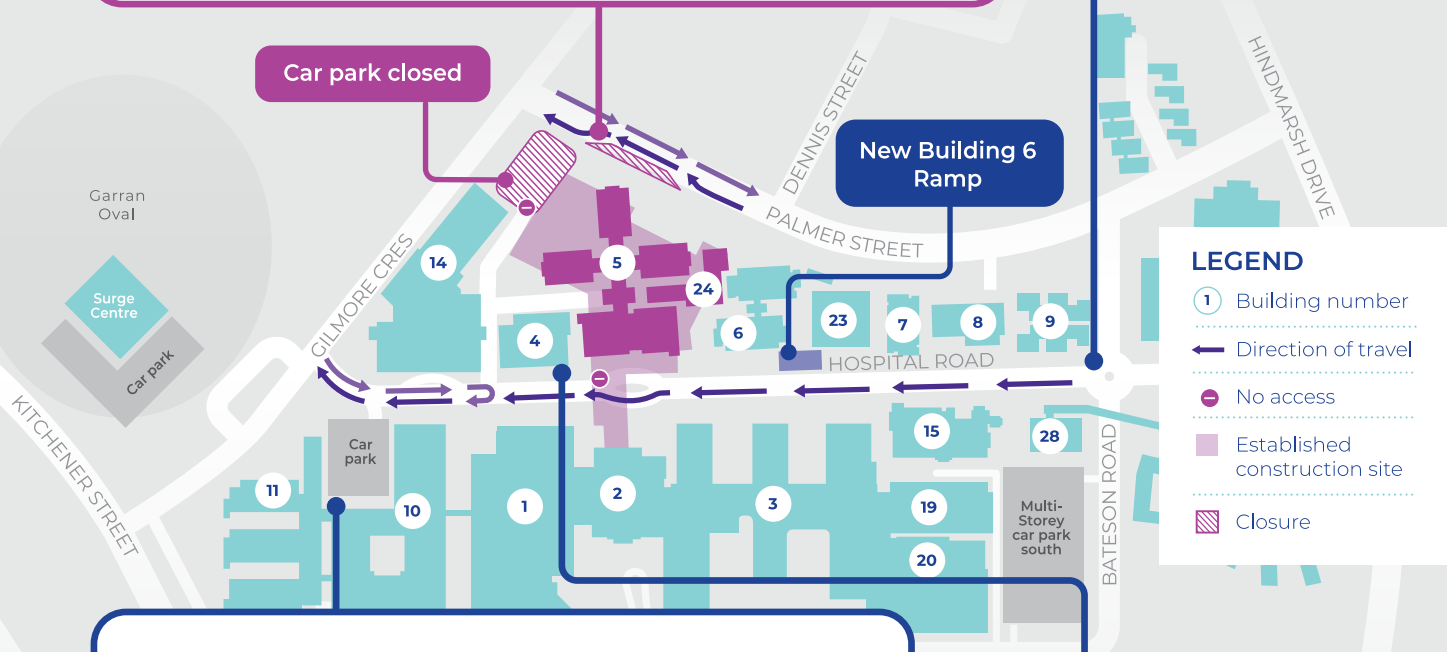
- ▶ A portion of Palmer Street is now a material loading/unloading bay. This means the position of traffic lanes have temporarily shifted to the east between Dennis Street and Gilmore Crescent.
- ▶ The bay functions as a 'drive-through' lane allowing heavy vehicles to enter, load/unload and exit in a single forward direction.
- ▶ The speed limit along Palmer Street has been reduced to 40km/h and will remain in place for the duration of construction.
- ▶ Pedestrians will be redirected to the footpath on the eastern side of Palmer Street.
- ▶ The area will be managed by a trained and licensed traffic controller.

## HOSPITAL ROAD

- ▶ The southern section of Hospital Road remains as a through-road from south to north. Traffic and pedestrian arrangements will change in early 2022 when the road permanently closes.

Car park closed

New Building 6 Ramp



### LEGEND

- ① Building number
- Direction of travel
- ⊘ No access
- █ Established construction site
- ▨ Closure

## MORE PATIENT PARKING

- ▶ Parking will be created outside the entrance to the Centenary Hospital for Women and Children along with changes to the footpaths to make them safer and more user-friendly.
- ▶ More cars will be able to angle park alongside the administrative building and the courtesy bus will stop closer to the entrance.

## REPOSITIONED BUILDING 4 ENTRY

- ▶ Staff and students wishing to access the medical library or teaching facilities can enter via the new entry facing Hospital Road.

## TOWER CRANE COMING 2022

A tower crane will be established on site early next year. The crane will lift and move construction materials and equipment from within the site boundary, no items will be moved above residential streets.

The crane will exhibit an aircraft warning light as required by the Civil Aviation Safety Authority and Canberra Airport. You may notice the crane change positions to prepare for particularly windy days.

The crane will not be operational during high wind conditions.

Local residents can expect further information from Multiplex on the installation of the tower crane in the coming months.

