

# CIT Woden Campus

## Construction Activity Update

August 2023

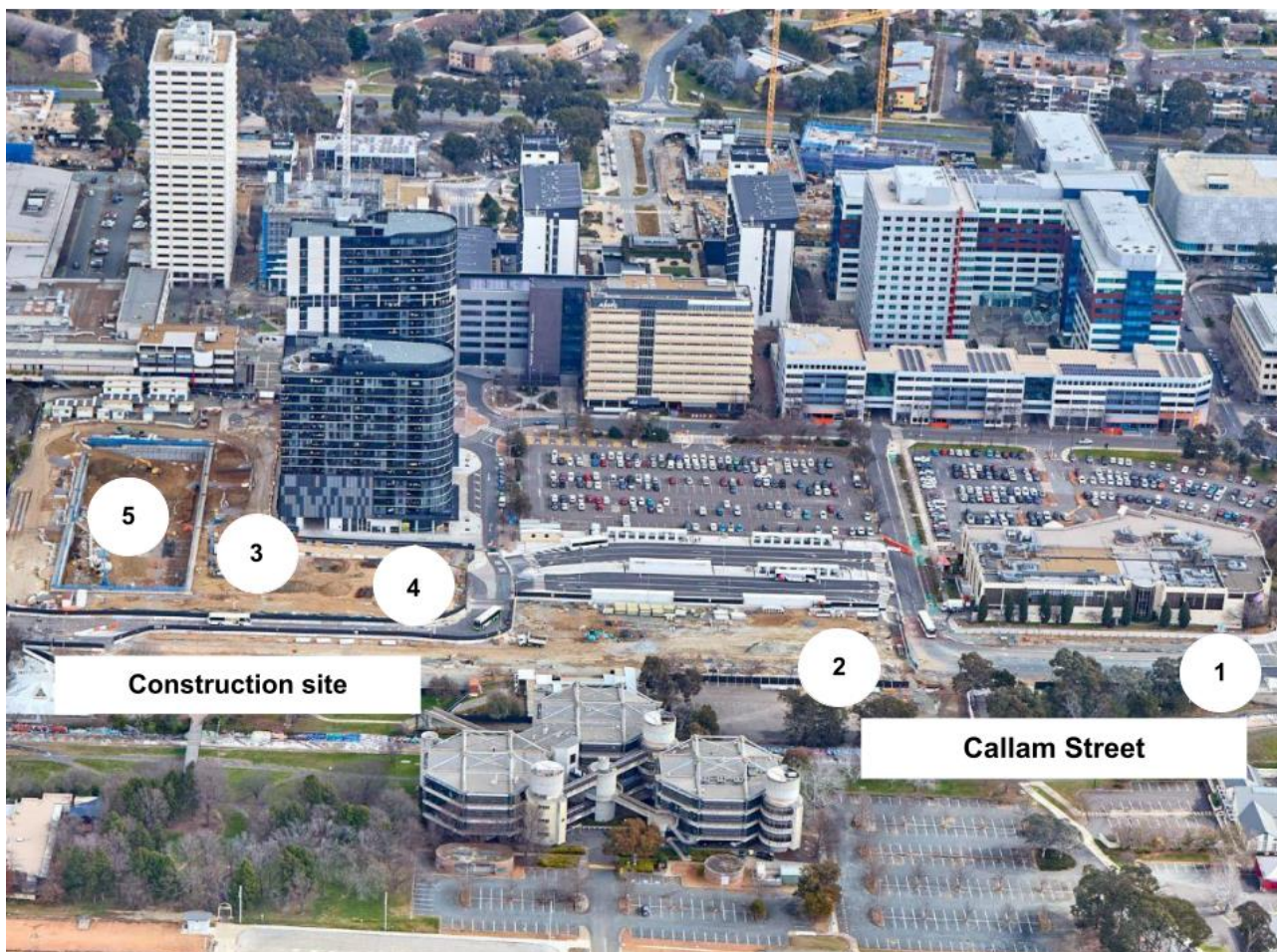


**BUILT  
FOR  
CBR**

### What's happening on site in August

The CIT Woden Campus project will bring state-of-the-art learning facilities, a new public transport interchange, improved active travel and vibrant public spaces to Woden.

This update summarises upcoming construction activities and outlines any expected impacts or disruptions to the community.



#### Key:

- |                                     |   |
|-------------------------------------|---|
| 1. Eastern verge staging            | 4. Slab On Grade preparation                          |
| 2. Bus interchange stormwater works | 5. Concrete, foundation piling and in-ground services |
| 3. Crane erection                   |   |

#### Contact us:

Major Projects Canberra

Email: [CITCampusWoden@act.gov.au](mailto:CITCampusWoden@act.gov.au)

Website: [www.act.gov.au/citcampuswoden/home](http://www.act.gov.au/citcampuswoden/home)



To speak to someone in a language other than English, telephone the Telephone Interpreter Service (TIS) on **13 14 50**. It operates 24 hours a day, seven days a week.

## Description of main construction activity

### 1. Eastern verge staging on Callam Street

To facilitate ongoing excavation, substrate preparation and storm water pipe laying, buses will be diverted slightly when using the north end of Callam Street. Public transport timetables and pedestrians will not be affected.

### 2. Bus interchange stormwater works on Callam Street

Installation of a stormwater system to manage water and prevent flooding during heavy rainfall. This will ensure a safer and more efficient transportation hub. This work will continue for several months.

### 3. Crane erection

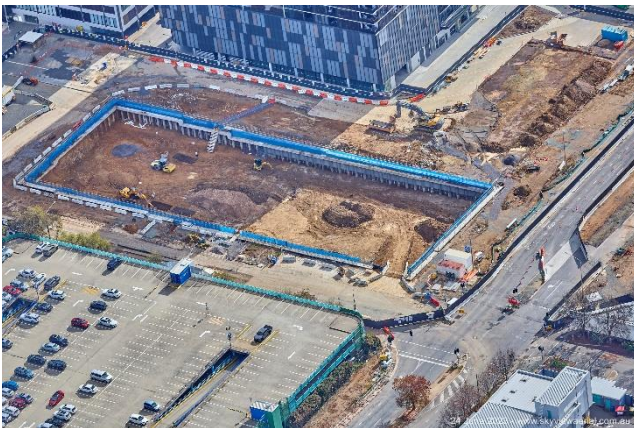
The first of two electric tower cranes will be installed on-site to facilitate the construction process and handle heavy materials and equipment safely and efficiently.

### 4. Slab On Grade preparation for the new CIT building

Preparation, levelling and compacting of the soil to create a solid base for the ground slab to be poured.

### 5. Concrete, footing piling and in-ground services for the new CIT building

Footing piling work is underway, starting the main structure for the CIT building. In-ground- services, such as electrical and plumbing systems are being installed to meet future building needs.



## How works could affect you

While every effort is made to minimise construction disruption and impacts to the community, at times, you may experience some disruption.

This may include higher levels of noise and dust, traffic, pedestrian, and cyclist changes involving detours and an increase in construction vehicle movements.

Activities will be monitored by Lendlease. All work is weather dependent and subject to change. Road closures, traffic control and pedestrian diversions continue to be in place.

Refer to the '[Traffic Impacts](https://act.gov.au/citcampuswoden/construction/traffic-impacts)' page for the transit map at [act.gov.au/citcampuswoden/construction/traffic-impacts](https://act.gov.au/citcampuswoden/construction/traffic-impacts)