

# Light Rail to Woden

## Stage 2A City to Commonwealth Park

Stage 2 light rail to Woden is being constructed in two stages for a faster project delivery. The first stage (2A) will extend the line from the City to Commonwealth Park, while the second stage (2B) will take light rail all the way to Woden.

An Environmental Assessment (EA) has been prepared for Stage 2A as part of the project's planning and works approval process. This fact sheet outlines some of the benefits and features of Light Rail Stage 2A.



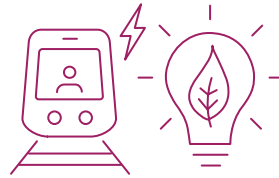
### Benefits of light rail to Commonwealth Park



Improving urban amenity and active travel with bike racks on vehicles and at stops



Improved access to workplaces, businesses, education centres and community events



Powered by 100% renewable energy - reducing emissions



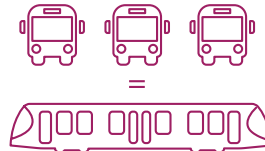
Accessible for people of all abilities, wheelchairs and prams



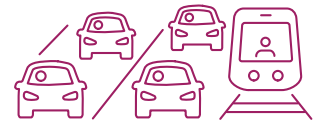
Better connection between the city and the lake



Reliable and convenient - with services every 5-15 minutes



Higher passenger capacity to buses – equivalent to three buses



Helping prevent future traffic congestion in the city

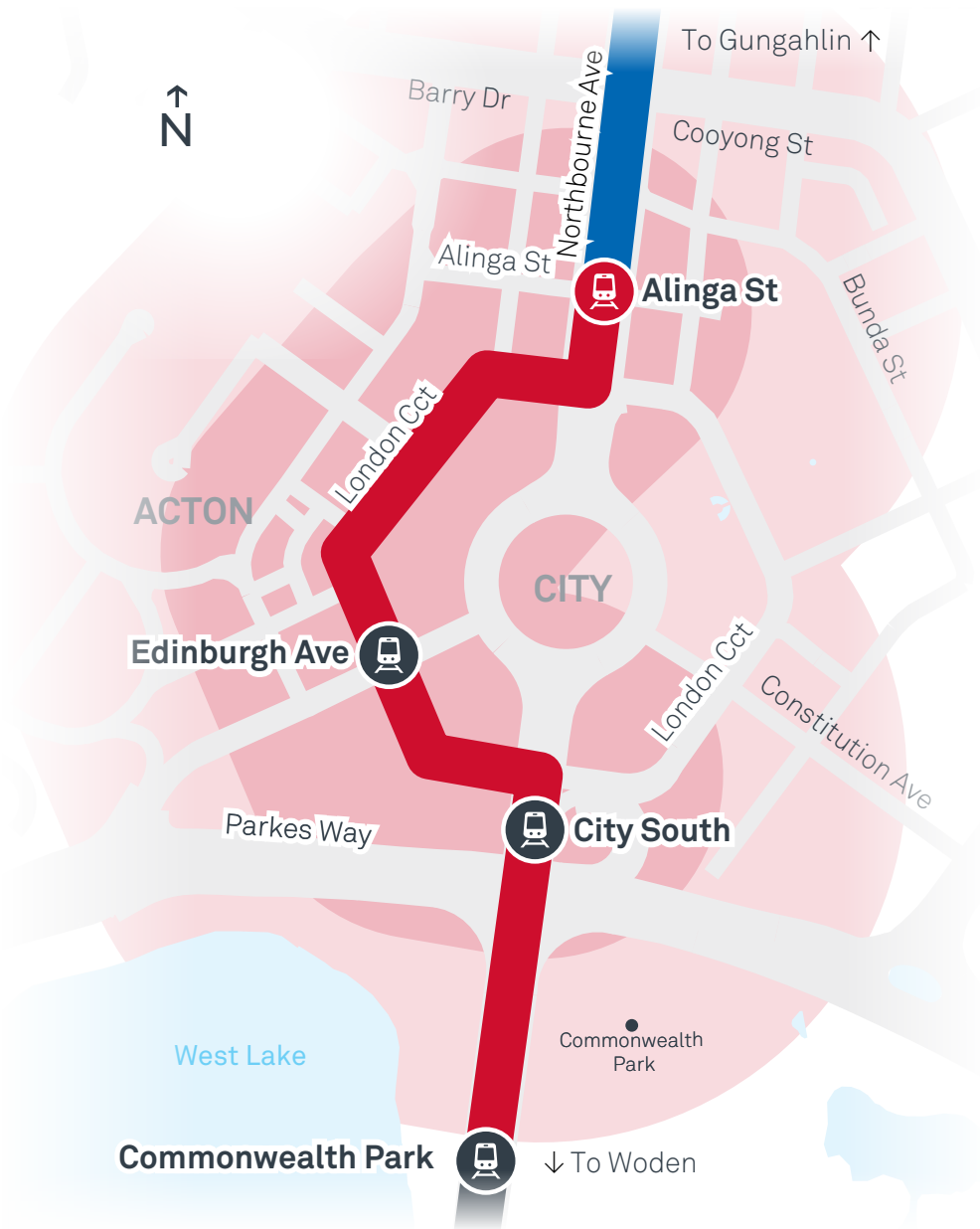
### Wire-free and green tracks

To maintain Canberra's iconic landmarks and views, the Stage 2A extension will feature a discreet wire-free track and sections of 'green track' for seamless integration of natural and urban environments.

Green tracks are areas where tracks sit on a bed of specially selected grass or

plants instead of bitumen or concrete. This track design helps reduce glare and the urban heat island effect. The grass bed also helps the track blend in the surrounding environment and is better at reducing noise, absorbing rainwater, and reducing dust accumulation.





**LEGEND**

- Proposed Light Rail Stop
- Existing Light Rail Stop
- Station Catchment
- Light Rail Stage 1: Gungahlin to City
- Light Rail Stage 2A: City to Commonwealth Park
- Light Rail Stage 2B: Commonwealth Park to Woden

**The stops**

**Edinburgh Avenue**

The Edinburgh Avenue stop will service residents and major businesses in the area, along with the Australian National University.

**City South**

The City South stop will improve access to the eastern and southern areas of the city and provide additional access to the city's west.

**Commonwealth Park**

The third stop will be built adjacent to Commonwealth Park, offering a convenient way to reach lakeside events, attractions and parks.



**Safety features**

- Protected intersections to improve pedestrian and cyclist safety
- In-ground lights at light rail crossings to help prevent accidents

**Have your say**

As part of the planning approval process for the Light Rail Stage 2A project, a Works Approval has been submitted to the National Capital Authority (NCA) and a Development Application has been submitted to the ACT Planning and Land Authority (ACTPLA).

To have your say on the project, you can make a submission to the NCA or ACTPLA.

Visit [act.gov.au/lightrailtowoden](http://act.gov.au/lightrailtowoden) to learn more about the project and how to have your say.

**BUILT FOR CBR**

