

Produced by ACT Health

Week ending 11 September 2022

Reporting period Monday 5 September 2022 to Sunday 11 September 2022 inclusive, Epidemiological Week 37.

Key statistics:

COVID-19:

- To align with other jurisdictional reporting, the reporting cut off time for case notifications has changed from 8pm to 4pm. This report covers the period 8pm on 4 September 2022 to 4pm on 11 September 2022.
- In Week 37, the ACT recorded 876 new COVID-19 cases. This is the lowest number of weekly cases recorded in the ACT for 2022.
- Hospitalisations continue to decrease since a peak in numbers in mid-July.

Influenza:

- The ACT continues to receive a low number of reported influenza cases, with three new notifications in Week 37.
- 44.5% of ACT residents aged 6 months or over have received an influenza vaccination. This is higher than the national coverage of 38.7%

Table 1: COVID-19 and laboratory-confirmed influenza notifications, 1 January to 11 September 2022

COVID-19 ^a		Influenza ^b	
WEEK 37 ending 11/09/2022	Year to date 2022 ^{cd}	WEEK 37 ending 11/09/2022	Year to date 2022 ^{cd}
876	199,572	3	1,957

Notes:

^aCOVID-19 cases notified to ACT Health during the reporting period

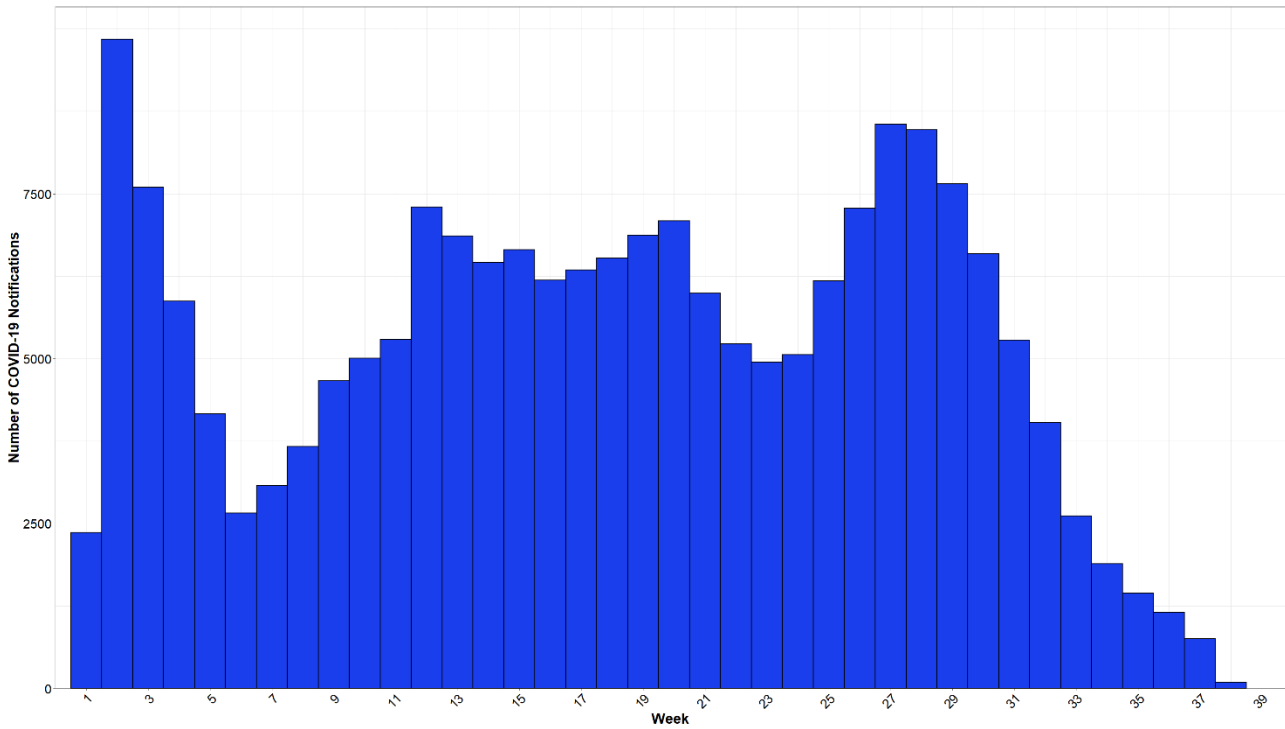
^bLaboratory-confirmed influenza notifications where the specimen collection date was within the reporting period.

^cFrom 1 January 2022 until 4pm 11 September 2022

^dTotal cases since 1 January 2022 may not reflect the sum of cases from last week's reporting period and this week's reporting period. Case numbers may change due to reclassifying some of the cases following further investigation or merging of duplicate records.

Produced by ACT Health

Figure 1: COVID-19 cases by week of diagnosis^{ab} for 2022



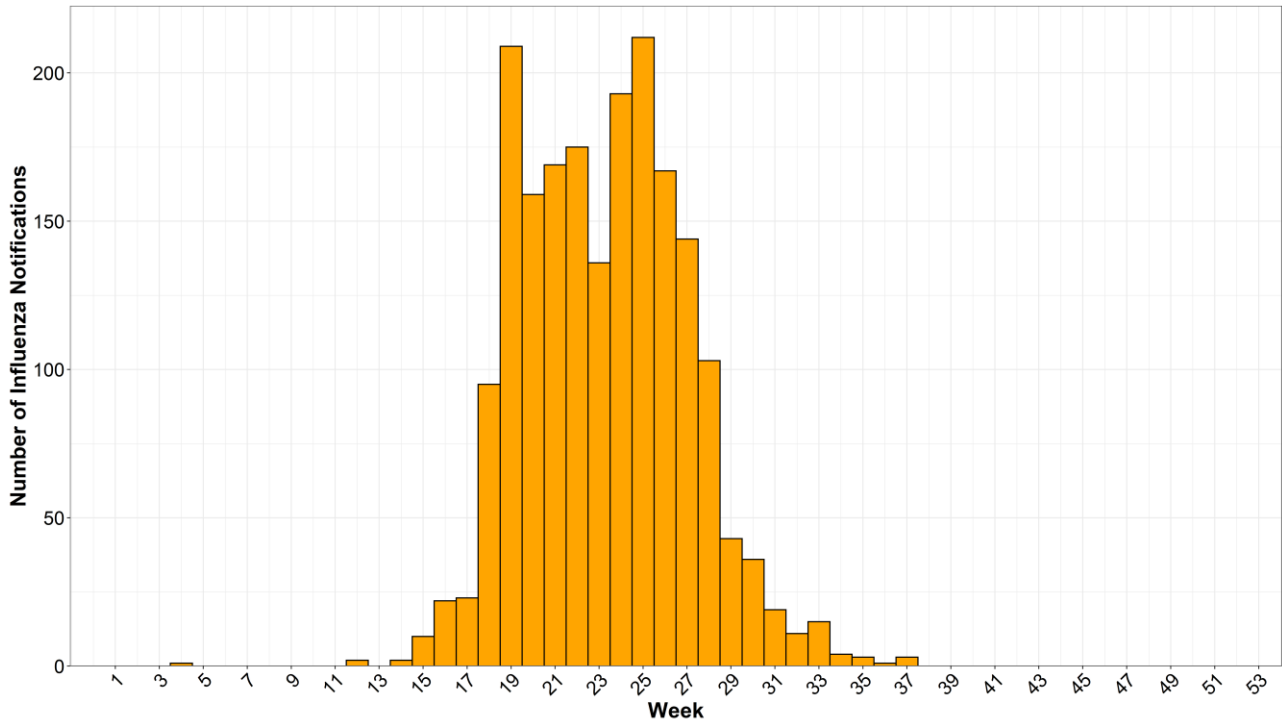
Notes:

^aThe **DIAGNOSIS DATE** will be the **TRUE ONSET DATE** if known, otherwise it will be earliest of the **SPECIMEN DATE**, the **NOTIFICATION DATE** or the **NOTIFICATION RECEIVED DATE**.

^b Epidemiological week 1 (27 December 2021 to 2 January 2022) shown above only includes cases from 1 and 2 January 2022.

Produced by ACT Health

Figure 2: Influenza cases by week of specimen collection date^a for 2022



Notes:

^aThe notification data was exported on 12 September 2022 from the ACT Notifiable Disease Management System for the 1 January 2022 to 11 September 2022, by date of specimen collection.

Produced by ACT Health

Table 2: COVID-19 and laboratory-confirmed influenza notifications by age group, reporting period and 1 January to 11 September 2022

Age Group	WEEK 37 Ending 11/09/2022		Year To Date 2022	
	COVID-19	Influenza ^c	COVID-19	Influenza
0-4	39		10,404	253
5-11	64		18,398	347
12-17	36		15,536	189
18-24	82		24,319	401
25-39	265		58,287	338
40-49	133		30,276	136
50-64	138		27,271	139
65+	119		15,081	154
TOTAL^{ab}	876	3	199,572	1,957

Source: ACT Health Data Repository.

Notes:

^aCases notified to ACT Health during the reporting period

^bTotal COVID-19 cases may not reflect the sum of cases from last week's reporting period and this week's reporting period. Please see the explanatory notes for further information.

^cWhere influenza notifications were fewer than five in an age group, these cells have been intentionally left blank.

Table 3: COVID-19 vaccination statistics^a as at 11 September 2022

77.7% VACCINATIONS (TWO DOSES: 5-15 YRS OLD)	78.2% VACCINATIONS (THREE DOSES: 16 YRS+)	58.3% VACCINATIONS (FOUR DOSES: 50 YRS+)
--	---	--

Note:

^aPopulation change is occurring in the ACT including a shift in age breakdowns and interstate and overseas migration into and out of the ACT.

Vaccination rates may either increase or decrease as they are affected by these changes. In Week 37, the second dose vaccination coverage rate for the 5-15-year age group decreased by 0.1%

Produced by ACT Health

Number of cases reported with COVID-19 in the ACT

Table 4: COVID-19 case status by test type

	Test type	WEEK 36	WEEK 37	2022 TOTAL ^{bc}
		Ending 04/09/2022 ^a	Ending 11/09/2022 ^{ac}	
Cases	PCR	637	435	116,420
	RAT	566	441	83,152
	Total	1,203	876	199,572
Deaths ^d		2	0	110

Notes:

^aCases notified to ACT Health during the reporting period.

^bTotal cases or deaths 1 January to 11 September 2022

^cTotal COVID-19 cases since March 2020 may not reflect the sum of cases from last week's reporting period and this week's reporting period. Case numbers may change due to reclassifying some of the cases following further investigation or merging of duplicate records.

^dRefers to a COVID-19 death that has been confirmed by ACT Health during the reporting period. The definition of a COVID-19 death for surveillance and reporting purposes is according to the COVID-19 SoNG.

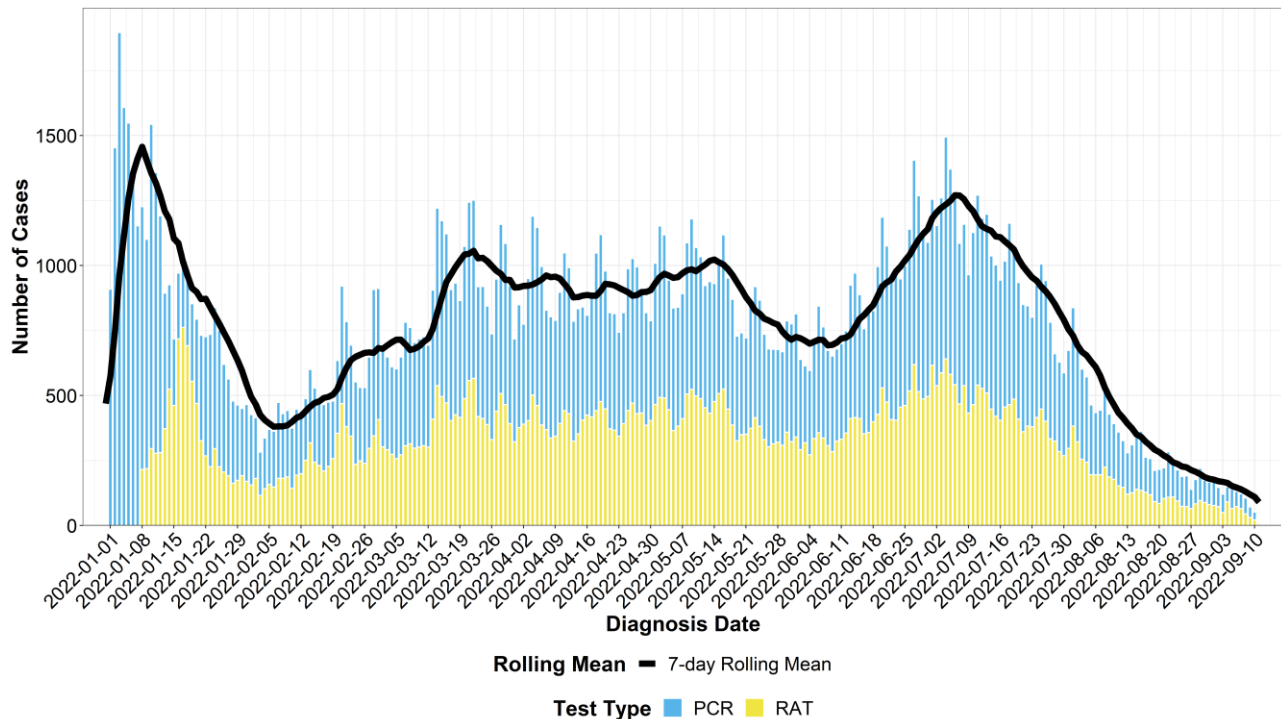
- Of the 110 COVID-19-related deaths in 2022, 21 had received 4 doses of vaccine, 37 had received 3 doses of vaccine, 30 had received 2 doses of vaccine, six had received a single dose of vaccine, 12 were unvaccinated and the vaccination status of the remaining four individuals is unknown.
- Of the new COVID-19 cases reported this week, 11% (93/876) were individuals who had more than one episode¹ of COVID-19 reported to ACT Health. This percentage has increased from 8.4% in Week 36.

¹ For this analysis we have defined multiple episodes as a person who had an initial positive PCR/RAT, was cleared from isolation, and a subsequent positive PCR/RAT after the nationally recommended testing window (COVID-19 SoNG) that was current at the time of the subsequent test. This has ranged from 4 weeks to 12 weeks throughout the pandemic. It is possible that some individuals have not been included in this analysis due to the changing recommended testing periods, due to individuals having had an initial infection in a different location (i.e., not in ACT Health system). This number should not be taken as meaning reinfection as some instances of prolonged viral shedding may have been counted as a separate episode. Most of these episodes have not had Whole Genome Sequencing attempted on both samples (if both were PCR), so we are unable to confirm how many have been reinfection with a different variant/subvariant.

Produced by ACT Health

Figure 3: COVID-19 cases (with 7-day rolling mean) by test type and diagnosis date^{ab}

Since 1 January 2022



Notes:

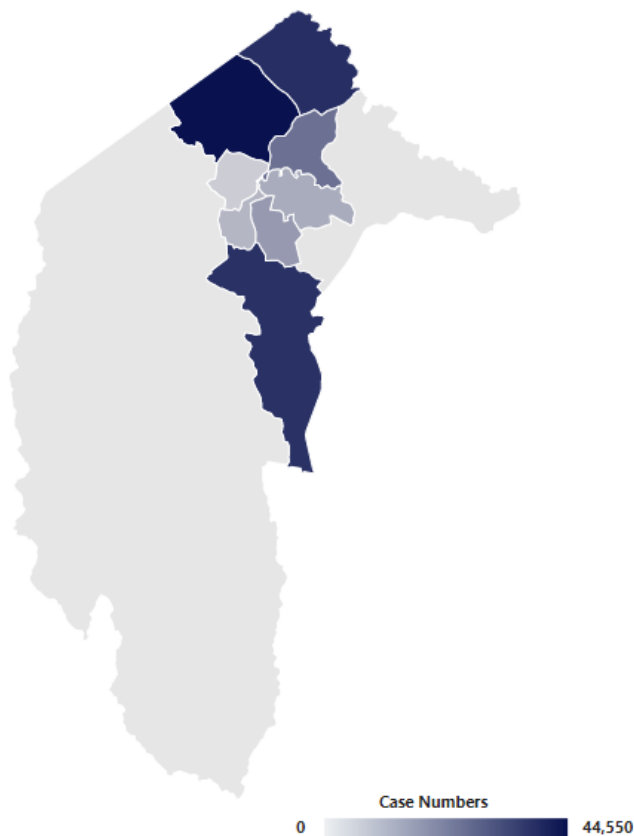
^aThe DIAGNOSIS DATE will be the TRUE ONSET DATE if known, otherwise it will be the earliest of the SPECIMEN DATE, the NOTIFICATION DATE or the NOTIFICATION RECEIVED DATE.

^bDue to the case processing system, there is a small proportion of cases that will not appear before the end of the cut-off period. This will result in an under-reporting of the case numbers and average mean for the 48 hours prior to the cut-off period.

- COVID-19 case numbers have continued to decrease this reporting period.
- There were 876 cases reported in Week 37 (Monday 5 September 2022 to Sunday 11 September 2022) compared with 1,203 new cases in week 36 (Monday 29 August 2022 to Sunday 4 September 2022). Total cases for Week 36 were previously reported as 1,209, which has decreased following data cleaning, including removal of duplicate records.
- In Week 37, the 7-day rolling case mean (PCR and RAT) was 105-130 cases per day. This compares to 160-200 cases per day in Week 36. This is the lowest 7-day rolling case mean (PCR and RAT) recorded in the ACT for 2022.

Produced by ACT Health

Figure 4: Map of COVID-19 cases by Statistical Area Level 3 (SA3) since 1 January 2022



SA3 Region ^a	Cases ^{bc}
Belconnen	44,524
Canberra East	470
Gungahlin	38,472
Molonglo	5,504
North Canberra	24,653
South Canberra	12,440
Tuggeranong	38,103
Uriarra - Namadgi	244
Weston Creek	10,200
Woden Valley	16,348
Not available ^d	5,689
Outside ACT ^d	2,925
TOTAL^{ae}	199,572

Notes:

^aData show cases notified to ACT Health from 1 January 2022 until the end of the reporting period (4pm, 11 September 2022). These data use the [Australian Statistical Geography Standard \(ASGS\) Edition 3](#).

^bThese data use multiple address identifiers to determine the SA3 region.

^cTotals are calculated as case numbers and do not take into account differences in populations across regions.

^dThere were 8,614 cases not included in the figure due to incomplete or inaccurate address data reported to ACT Health and/or residential address being outside the ACT.

^eTotal COVID-19 cases may not reflect the sum of cases from last week's reporting period and this week's reporting period. Please see the explanatory notes for further information.

Produced by ACT Health

Table 5: COVID-19 cases^{ab} by age group for reporting period

Age Group	WEEK 36	WEEK 37	Age Group Percentage (%) of TOTAL WEEK 37	Age Group Rate (per 100,000 population) of TOTAL WEEK 37
	Ending 04/09/2022	Ending 11/09/2022		
0-4	56	39	4.5	146
5-11	108	64	7.3	158
12-17	58	36	4.1	119
18-24	141	82	9.4	178
25-39	311	265	30.3	230
40-49	177	133	15.2	216
50-64	172	138	15.8	191
65+	180	119	13.6	191
Not stated/inadequately described ^c	0	0	0.0	0
Total	1,203	876	100	193

Source: ACT Health Data Repository.

Notes:

^aCases notified to ACT Health during the reporting period.

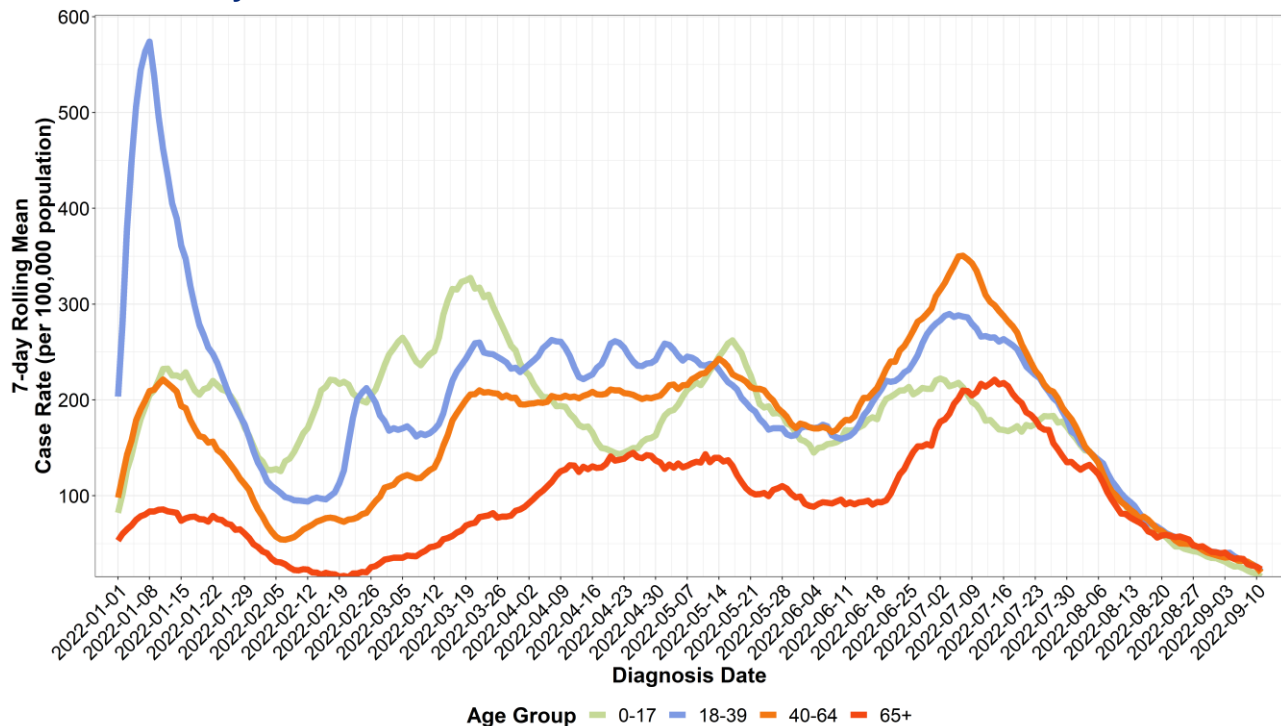
^bTotal COVID-19 cases may not reflect the sum of cases from last week's reporting period and this week's reporting period. Please see the explanatory notes for further information.

^cDates of birth were invalid or not available.

Produced by ACT Health

Figure 6: Rolling mean of COVID-19 case rate by age group and diagnosis date^a

Since 1 January 2022



Notes:

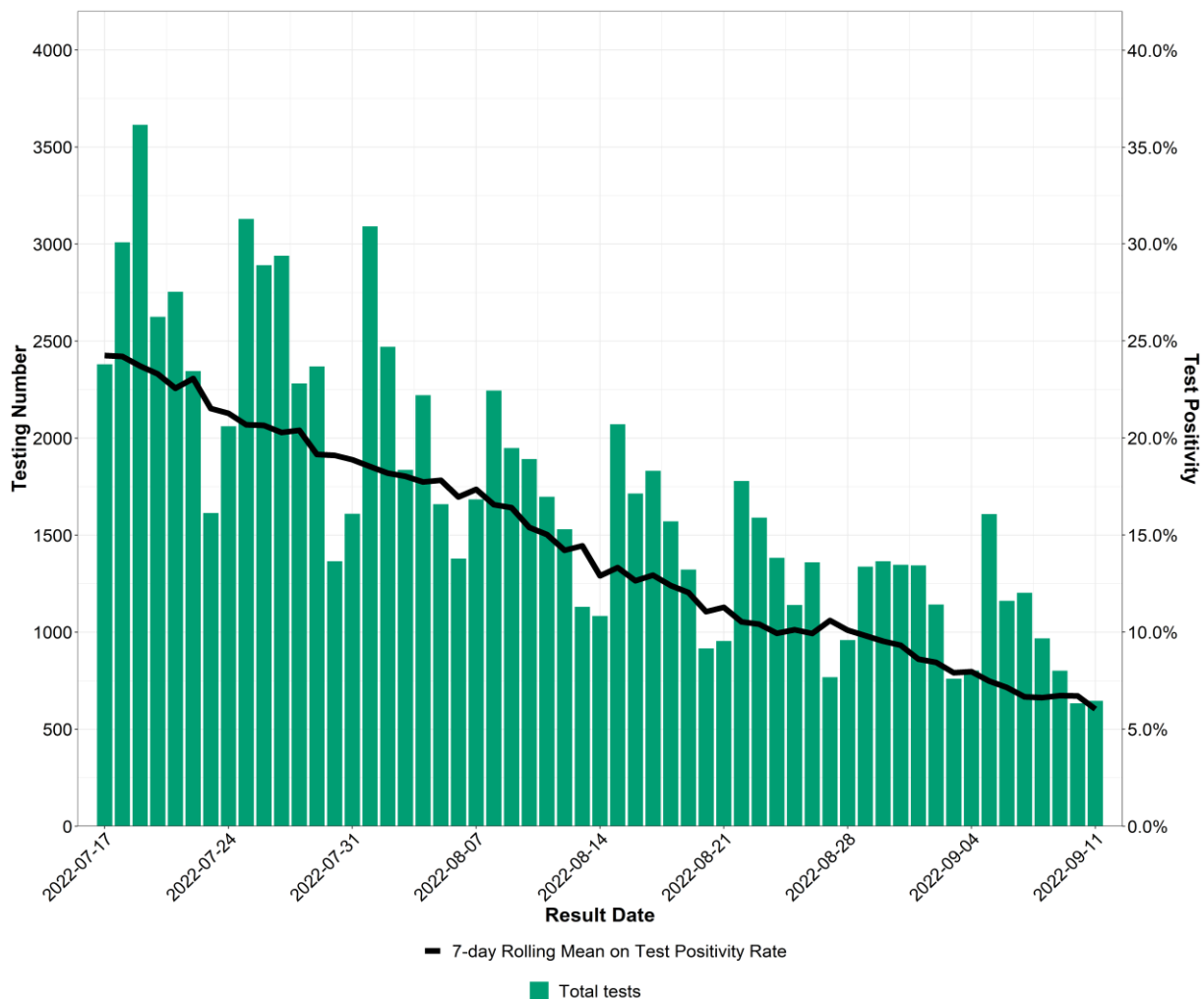
^aThe DIAGNOSIS DATE will be the TRUE ONSET DATE if known, otherwise it will be earliest of the SPECIMEN DATE, the NOTIFICATION DATE or the NOTIFICATION RECEIVED DATE

- The case rate is calculated as the number of reported cases divided by the population count of the people in the ACT in that age group multiplied by 100,000. The rolling mean is the average of the rate for that day and the previous 6 days. A rolling mean provides an average line over time and smooths out predictable peaks and troughs.
- In Week 37, the 7-day rolling average case continued to decrease for all age groups, with each averaging between 20 and 30 cases per day.

Produced by ACT Health

Figure 6: Testing by result date with test positivity

Past 8 Weeks



Notes:

^aTesting number includes positive and negative tests for PCR only.

^bTest positivity is calculated as the number of positive PCR tests divided by the total number of PCR tests, both positive and negative. The rolling mean is the average of the test positivity for that day and the previous 6 days.

- Total PCR test numbers have declined this reporting period, with a total of 7,058 tests being conducted in Week 37. This compared to 8,060 tests in Week 36, and 8,481 tests in Week 35.
- Based on PCR tests only, the test positivity 7-day rolling mean has fallen this reporting period at an average of 7% compared to 9% in Week 36. This is the lowest test positivity 7-day rolling mean in the ACT since the first week of January 2022.

Produced by ACT Health

Table 6: COVID-19 cases^{ab} by Aboriginal and/or Torres Strait Islander status for the reporting period

Indigenous Status	WEEK 37 Ending 11/09/2022	2022 TOTAL^a
Aboriginal and/or Torres Strait Islander People	16	3,625 (2%)
Neither Aboriginal nor Torres Strait Islander People	585	162,764 (82%)
Not stated/inadequately described ^c	23	7,712 (4%)
Not available ^d	252	25,471 (13%)
Total	876	199,572

Notes:

^aCases notified to ACT Health during the reporting period.

^bTotal COVID-19 cases may not reflect the sum of cases from last week's reporting period and this week's reporting period. Please see the explanatory notes for further information.

^cIndividuals have chosen not to identify their Aboriginal and/or Torres Strait Islander Status.

^dData were not available on Aboriginal and/or Torres Strait Islander Status. These data were not available if an individual has not completed the survey, is awaiting a case interview, or has declined to respond to a case interview.

Produced by ACT Health

COVID-19 Hospitalisation in the ACT

Table 7: COVID-19 cases^a by vaccination status and hospitalisation status (non-mutually exclusive^b)

Status (NON-MUTUALLY EXCLUSIVE) ^a	Unvaccinated N (%)	1 doses of COVID-19 vaccine N (%)	2 doses of COVID-19 vaccine N (%)	3 doses of COVID-19 vaccine N (%)	4 doses of COVID-19 vaccine N (%)	Unvalidated/ Unknown N (%)	2022 TOTAL
In hospital ^{bcd}	267 (17%)	45 (3%)	437 (28%)	611 (39%)	192 (12%)	17 (1%)	1,569 (100%) ^e
In ICU	22 (17%)	3 (2%)	44 (35%)	45 (35%)	11 (9%)	2 (2%)	127 (100%) ^e

Notes:

^aTotal cases since 1 January 2022.

^bCases are counted multiple times for the different types of hospital admissions (admitted to the hospital ward, ICU and receiving ventilation). Therefore, data in this table are not non-mutually exclusive.

^cCases admitted to an ACT hospital, including those with a residential address in the ACT or another state or territory.

^dHospitalisation is defined as a person being admitted to an ACT hospital for any reason and does not differentiate between a person admitted for COVID 19 related reasons or for other reasons.

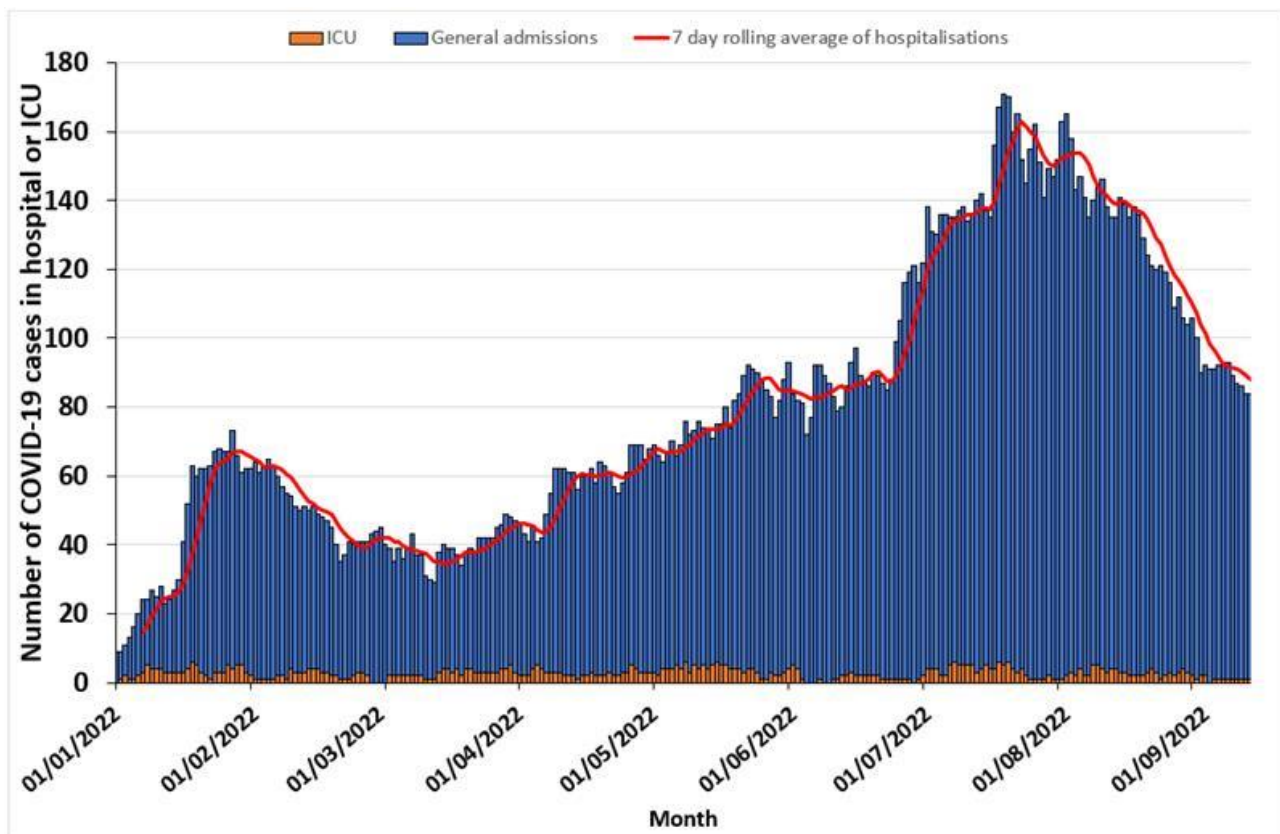
^e3 cases were admitted to an ACT hospital with admission date prior to the reporting period. 0 cases were admitted to an ICU with an admission date prior to the reporting period.

- Since 1 January 2022, 52%² (66/127) of all cases admitted to the ICU had received fewer than 3 doses of vaccine at the time of their admission despite being age eligible.
- Since 1 January 2022, 17% of cases admitted to the ICU were unvaccinated at the time of their admission.

² This numerator only includes cases admitted to the ICU whose vaccination status was able to be verified and who were age eligible for 3 or more doses of COVID-19 vaccine at the time of admission. Since 1 January 2022 there have been 3 cases who were not age eligible for 3 doses of vaccine at the time of their admission, and two cases whose vaccination status remains unvalidated/unknown

Produced by ACT Health

Figure 7: COVID-19 hospitalisations^a in the ACT, by date^b, from 1 January 2022



Note :

^aHospitalisation is defined as a person admitted to an ACT hospital for any reason and does not differentiate between a person admitted for COVID-19 related reasons or for other reasons. Cases admitted to an ACT hospital includes those with a residential address in the ACT or another state or territory.

^bDate used in the reporting week refers to the date of publication of COVID-19 hospitalisations on the ACT Health website. Data published on, for example, 17 July 2022 refer to COVID-19 cases in hospital up until 8pm 16 July 2022.

- At the end of the reporting period, (4pm³ Sunday 11 September 2022), there were 81 inpatients affected by COVID-19 across ACT hospitals.
- COVID-19 ICU admissions remain low. At the end of the reporting period, none of the 81 inpatients were admitted to ICU or ventilated.

³ The reporting period for COVID-19-related hospital notifications will change to 4pm for the next weekly ACT COVID-19 and Influenza Epidemiology Overview, to be in line with the rest of the COVID-19 reporting data.

Produced by ACT Health

Table 8: Hospitalised^a COVID-19 cases^b by age group and vaccination status

Age Group	Unvaccinated N (%)	1 doses of COVID-19 vaccine N (%)	2 doses of COVID-19 vaccine N (%)	3 doses of COVID-19 vaccine N (%)	4 doses of COVID-19 vaccine N (%)	Unvalidated/ Unknown N (%)	2022 TOTAL
0-17	125 (70%)	13 (7%)	33 (19%)	2 (1%)	0 (0%)	5 (3%)	178 (100%)
18-39	34 (13%)	8 (3%)	118 (45%)	94 (36%)	3 (1%)	5 (2%)	262 (100%)
40-64	42 (12%)	7 (2%)	111 (32%)	161 (46%)	25 (7%)	2 (1%)	348 (100%)
65+	66 (8%)	17 (2%)	175 (22%)	354 (45%)	164 (21%)	5 (1%)	781 (100%)
2022 TOTAL^c	267 (17%)	45 (3%)	437 (28%)	611 (39%)	192 (12%)	17 (1%)	1,569 (100%)

Notes:

^aHospitalisation is defined as a person being admitted to an ACT hospital for any reason and does not differentiate between a person admitted for COVID-19 related reasons or for other reasons.

^bCases admitted to an ACT hospital, including those with a residential address in the ACT or another state or territory.

^c3 cases were admitted to an ACT hospital with admission date prior to the reporting period. 0 cases were admitted to an ICU with an admission date prior to the reporting period

Historical COVID-19 cases

Table 9: COVID-19 case totals by year

Year	Total cases ^a
2020	118
2021	4,261
YTD 2022 ^b	199,572

Notes:

^aCOVID-19 cases notified to ACT Health during the reporting period.

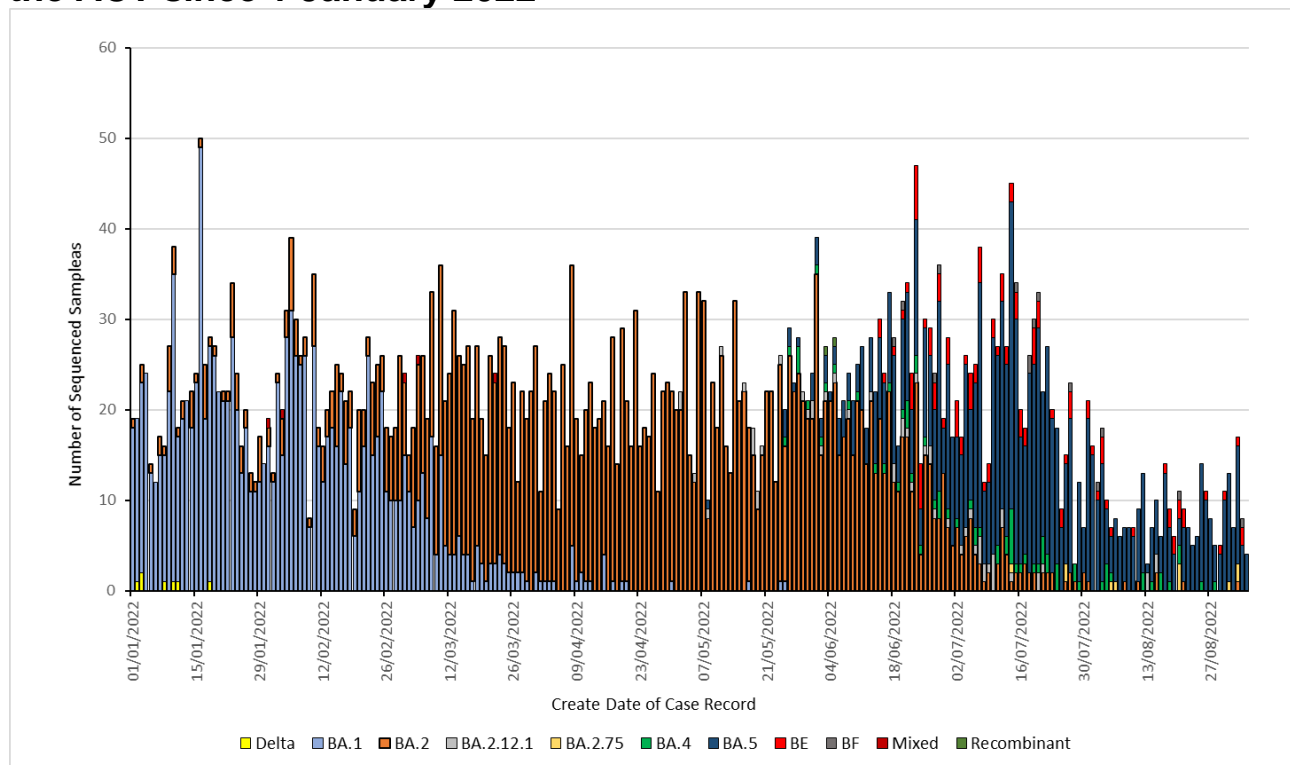
^bFrom 1 January 2022 until 4pm 11 September 2022

Produced by ACT Health

COVID-19 Whole Genome Sequencing

- No recombinant COVID-19 infections⁴ were recorded during this reporting period. The last recombinant (XM) was detected in Week 24.
- No mixed COVID-19 infections⁵ were recorded during the reporting period. Six mixed infections have been previously identified in ACT with the last recorded in mid-March 2022.
- BA.5 remains the dominant variant sequenced on samples sent for sequencing in the ACT (see Figure 8).

Figure 8: Proportion of variant designations of sequenced samples in the ACT since 1 January 2022



Note: All of the BA, BE and BF designations are subvariants of the B.1.1.529 Omicron variant.

⁴ A recombinant COVID-19 infection is where two strains have shared genetic material to form a new variant.

⁵ A mixed COVID-19 infection is defined as a case being simultaneously infected with two different COVID-19 strains.

Produced by ACT Health

Institutional outbreaks of influenza and COVID-19

- In Week 37, there were six active COVID-19 outbreaks in ACT Residential Aged Care Facilities (RACFs)⁶, and a total of eight new COVID-19 cases in residents in these facilities. This compares with Week 36, when there were seven active outbreaks and 44 new resident cases.
- In Week 37, there were two non-COVID-19 Acute Respiratory (ARI) outbreaks in an ACT RACF.
- During the reporting period, there have been no COVID-19 outbreaks in a residential disability setting notified to ACT Health.

COVID-19 vaccination coverage in the ACT

Table 10: COVID-19 vaccination coverage rates^a for ACT residents^{de} by age group, as of 11 September 2022

Age Group	Dose 1	Dose 2	Dose 3 ^b	Dose 4
5-15 ^f	84.8%	77.7%	<1%	-
16-29	89.5%	87.3%	56.2%	1.2%
30-39	>99%	98.7%	73.0%	12.1%
40-49	>99%	>99%	84.2%	19.5%
50-69	>99%	>99%	90.7%	46.8%
70+	>99%	>99%	>99%	82.3%
Total 5 and over	97.5%	95.0%	67.1%	23.6%
Total 16 and over	>99%	97.9%	78.2%	27.5%
Total 50 and over	>99%	>99%	93.7%	58.3%

Source: Australian Immunisation Register, QLIK reports. Population estimates are sourced from 2021 ABS Census ACT population data.

Notes:

^aPopulation change is occurring in the ACT including interstate and overseas migration into and out of the ACT. Vaccination rates are affected by these changes.

^bThere were 1,233 third doses administered prior to the approval of third doses for severely immunocompromised people on 8 October 2021. Third doses cannot be distinguished from boosters in AIR reporting.

^cThere were 3,280 fourth doses administered prior to the commencement of the administration of winter (second) boosters. Fourth doses cannot be distinguished from second boosters in AIR reporting.

^dACT residential status is determined by residential address given at the time of vaccination. This may differ from a person's Medicare address.

^ePostcode 2901 is excluded from counting as this postcode lists vaccines administered under the Commonwealth COVID-19 Vaccination Program for persons that do not disclose their address, or for whom there is no known address. It includes national residents.

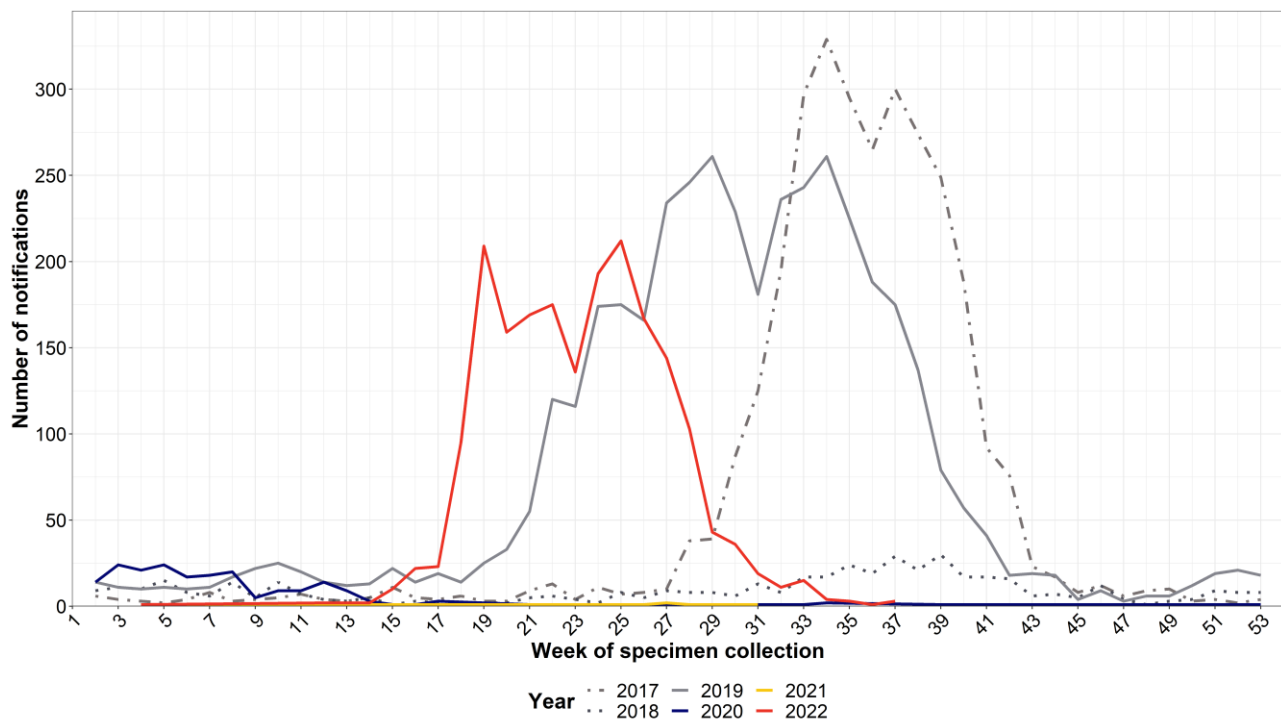
^fFrom 22 July 2022, 5-11-year group has been replaced with 5-15-year group to reflect the vaccination rollout.

⁶ As of 16 June 2022, a RACF COVID-19/Acute Respiratory Infection outbreak is defined as when two (2) or more residents test positive to COVID-19/the same respiratory virus within a 72-hour period.

Produced by ACT Health

Number of people reported with laboratory confirmed influenza in the ACT

Figure 10: Number of influenza notifications, by week and year of specimen collection, 1 January 2017 to 11 September 2022, ACT.



- Influenza notifications to ACT Health remain low. During the reporting period, one new influenza notification was made to ACT Health where the specimen was collected in Week 36. This compares to three influenza notifications in Week 35. Total notifications for Week 35 were previously reported as one but have since increased following additional data received.
- ACT Health continues to monitor cases of influenza as there may be further peaks later in the season. Historically, the influenza season in the ACT lasts from June until October.

Produced by ACT Health

Table 11: Number and proportion of influenza notifications^a by age group 1 January 2022 to 11 September 2022, ACT

Age Group	Number of Notifications	Proportion of Notifications (%)	Rate (notifications per 100,000 age specific population)
0-4	253	12.9	948
5-9	280	14.3	960
10-19	422	21.6	790
20-64	848	43.3	300
65+	154	7.9	248
TOTAL	1,957	100.0	431

Source: ACT Health Data Repository. Population estimates are sourced from 2021 ABS Census ACT population data.

Notes:

^aData related to the current and most recent weeks may be incomplete. All data is preliminary and subject to change as updates are received.

- So far in 2022, the 0-9 age group has the highest rate of influenza notifications per 100,000 population. This may reflect health-seeking and testing behaviours.

Influenza vaccination coverage

- Free influenza vaccines are available under the National Immunisation Program for:
 - All children aged 6 months to under 5 years
 - People aged 6 months and over with a medical condition that increase risk of influenza complications
 - Aboriginal and/or Torres Strait Islander people aged 6 months and over
 - Anyone pregnant (at any stage of pregnancy)
 - People aged 65 and over.
- In 2022, in the ACT, people aged 5 and over with a disability, their carers and concessions card holders (including the ACT Services Access Card) can also receive a free influenza vaccination.

Produced by ACT Health

Table 12: Influenza vaccination coverage⁷ by jurisdiction, all residents, 4 September 2022

	ACT	NSW	VIC	QLD	SA	WA	TAS	NT	AUS
6 mo - <5 yrs	52.1	32.1	37.6	25.9	33.7	28	36.1	36.4	32.4
5 - <15 yrs	28.3	23	26.7	19.4	25.5	19.6	25.1	17.5	23
15 - <50 yrs	36.6	27.6	31.7	25.4	34.7	25.5	32.8	25.8	28.7
50 - <65 yrs	52.2	44.1	48.1	44.4	54.1	44.4	54.9	32.7	46.1
≥65 yrs	71.7	66.5	70.3	68.4	75.6	69.2	75.5	41.6	68.9
Total (≥6mo)	44.5	37.6	41.3	35.7	45.8	35.8	45.7	28.5	38.7

Source: [National Centre for Immunisation Research and Surveillance Australia](#), AIR data as at 4 September 2022.

Table 13: Influenza vaccination coverage⁷ by jurisdiction, Aboriginal and Torres Strait Islander people

	ACT	NSW	VIC	QLD	SA	WA	TAS	NT	AUS
6 mo - <5 yrs	33.2	21.3	24.5	17.1	20	19.4	26.6	40.7	21.5
5 - <15 yrs	21.4	17.6	18.8	14.8	17.5	16.5	20.7	27.2	17.6
15 - <50 yrs	28.1	21.7	25	20.8	26.4	23.2	27.9	37.2	24.1
50 - <65 yrs	52.5	49.2	50.6	46.4	53.7	47.3	61.5	53.4	49.4
≥65 yrs	72.2	71.8	72.8	66.3	70.7	62.1	81.1	56.1	68.3
Total (≥6mo)	32.3	27.4	30.6	24.4	29.7	26.1	34.4	38.7	28.1

Source: [National Centre for Immunisation Research and Surveillance Australia](#), AIR data as at 4 September 2022.

⁷ Considerations when using AIR data in relation to influenza:

- Vaccinations reported to the AIR are more comprehensive and accurate since 2021 due to the introduction of mandatory reporting for National Immunisation Program vaccines. Vaccinations where the person has since been 'end dated' in the Medicare Consumer Directory (due to death, emigration, etc) are included in the data.
- Data includes influenza vaccinations given to Medicare eligible and non-Medicare eligible individuals.
- The counted values represent a count of all vaccination episodes.
- The 'vaccination episode' is linked to a state or territory based on the vaccination individual's Medicare residential address at the time of the report's creation
- There is a 'reporting lag' for the AIR data, as vaccine providers can upload the immunisation encounter days or weeks after the actual encounter occurs. The result of this 'reporting lag' is the immunisation figures for the current day/week appearing as lower than the reality of the situation.
- AIR is unable to identify individuals receiving a National Immunisation Program-funded vaccine due to a medical condition or pregnancy.

Produced by ACT Health

Explanatory notes:

Reporting period is Monday 4 September 2022 to Sunday 11 September 2022 inclusive, Epidemiological Week 37.

COVID-19

This report analyses COVID-19 case notifications, positive by Polymerase Chain Reaction (PCR) or Rapid Antigen Test (RAT) self-declaration, received by ACT Health. Some data in this report is based on online surveys sent to everyone who tests positive for COVID-19 in the ACT, by both PCR and RAT.

All analysis is based on data available in the ACT Health Notifiable Disease Management System (NDMS) at the time of reporting and is subject to change. Total COVID-19 cases may not reflect the sum of total cases reported in last week's report and this week's reporting period. This difference in cases is due to ACT Health's case processing system reclassifying some cases following investigation, removal of duplicates, and other case processing activities. In addition, new cases may be identified in previous reporting periods due to the inter-jurisdictional reporting agreements on cases being managed by ACT Health (after receiving a positive COVID-19 test interstate). These will be reflected in subsequent reports.

All case notification data is for ACT residents or non-ACT residents who fall under the management of ACT Health (i.e. they have a residential address outside the ACT but will remain in the ACT for their period of isolation). Case notifications that have a residential address outside the ACT have been excluded.

ACT Health must balance the importance of transparency with its legal and ethical obligations to maintain the confidentiality of the personal health information of individuals. As such, not all data tables are updated every week if the count difference between the weeks is fewer than five and if there is a chance of individuals being identified.

Diagnosis date is used to estimate the disease activity within the reporting period. This date represents when a person reported that their symptoms started, or the earliest of the date the PCR was collected/positive RAT was declared, or the date ACT Health received the positive PCR/RAT declaration. Due to potential delays in people seeking a COVID-19 test and the time taken for the test to be notified, the diagnosis date and notification date may differ by several days. This can result in underestimates of case numbers late in the reporting period, with data often appearing to trend down. This should be interpreted with caution and may change in subsequent reports as further notifications are received and data is reanalysed.

Daily case reporting by ACT Health represents COVID-19 case notifications received in the past 24 hours, also known as the notification-received date. The cut off time for reporting changed on 11 September 2022 from 8pm to 4pm to align with other jurisdictions. The notification received date provides a useful 'snapshot' of COVID-19 numbers over a shorter time. The diagnosis date can differ from the notification received date, as explained above, therefore case numbers in this report may not match the number of cases reported daily elsewhere for the same period.

ACT COVID-19 and Influenza Epidemiology Overview



Produced by ACT Health

Age is calculated as the age of the person on the date when their PCR specimen was collected, or the positive RAT was declared.

All cases are asked if they identify as Aboriginal and/or Torres Strait Islander in the online survey. People may choose to answer this question as 'not stated'. ACT Health attempts to contact all those that have not responded to their case survey. No data will be available for this question if a person declines to respond to their survey or for a small proportion of people who ACT Health is unable to contact.

Hospitalisation is defined as a person admitted to an ACT hospital for any reason and does not differentiate between a person admitted for COVID-19 related reasons or for other reasons. It may include those with a residential address outside the ACT. Those admitted may be active or cleared cases as defined by the CDNA National Guidelines for Public Health Units. ACT Health may receive notification of a case being admitted to hospital that falls within the reporting period after the release of the report. These will be reflected in subsequent reports.

Vaccination status is based on Australian Immunisation Register (AIR) records. Where a vaccination status is listed as 'unknown', this is because no record was found for the individual in AIR or the record was not accessible. Hospitalised cases, deaths and people who identify as Aboriginal and/or Torres Strait Islander with missing vaccination statuses are prioritised for review and the data updated accordingly.

On 22 July 2022, ACT Health began using 2021 ABS Census ACT population data for COVID-19 vaccination analyses. This resulted in changes to vaccination coverage rates due to the underestimate of the previous source (ACT Government Treasury Projections 2021 estimate). This change was publicly reported on Friday 22 July 2022.

The definition of a COVID-19 related death for surveillance purposes is according to the COVID-19 SoNG. A COVID-19 related death is reported if the person dies with COVID-19, though it may not be the primary cause of death. Deaths under investigation by the coroner will not be reported until the findings have been issued. ACT Health may receive notifications of COVID-19 related deaths that fall within the reporting period after the release of the report. These will be reflected in subsequent reports. COVID-19 related deaths are reported by the date of death, as recorded on the death certificate.

Whole Genome Sequencing (WGS) is currently being prioritised for cases from outbreaks in high-risk settings, recently returned overseas travellers, hospitalised cases, deaths and a small proportion of other community cases.

Laboratory-confirmed influenza

This report analyses laboratory-confirmed cases of influenza reported to ACT Health who are residents of the ACT. Influenza notification data should be interpreted with caution as notification data generally only represents a small proportion of cases of influenza in the community. Data provided for the current and most recent weeks may be incomplete. All data are preliminary and subject to change as updates are received.

Due to the COVID-19 pandemic, interpretation of 2020-2022 influenza notification data should consider: the impact of travel restrictions, quarantine, and social distancing measures; likely changes in health seeking behaviour of the community; and focused testing for COVID-19 response activities.

ACT COVID-19 and Influenza Epidemiology Overview



Produced by ACT Health

From 1 January 2022, the definition for a laboratory-confirmed influenza case changed. Please see the [Australian national notifiable diseases case definition](#) for more information. This change has minimal impact on the interpretation of influenza notification trends.