

19 July 2021

Dear Tenant,

WORKS NOTICE

WEEKEND WORKS (30 July – 2 August)

AND EASTY ST TEMPORARY ROAD CLOSURE JULY

Weekend roadworks

Stormwater Upgrades to Launceston and Easty Street intersection

8pm Friday 30 July to 5:30am Monday 2 August 2021

We are working on behalf of Major Projects Canberra to upgrade intersections, improve pedestrian safety and signalise intersections along Launceston Street in preparation for the new CIT Woden-Campus and the new Woden Public Transport Interchange works.

In order to minimise longer term disruption, Canberra Contractors have programmed *round-the-clock* construction works at the Launceston and Easty Street intersection from 8:00pm Friday 30 July through to 5:30am Monday 2 August 2021.

The works involving digging trenches, installing stormwater pipes and new drainage pits. These works are in preparation for future signalising of the intersection, including new dedicated pedestrian crossings.

What to expect

Works include:

- Demolition of existing kerb and median
- Use of large machinery to undertake excavation
- Movement of materials with trucks from the work area
- Installation underground services
- Concrete delivery and placement

We expect these works to generate:

- Noise typical of construction works
- During night works, lighting towers will be in use for safety reasons
- Reversing beepers and flashing lights are a safety requirement
- Traffic disruption, including speed reductions and detours

Noise will be localised to the area where works are being undertaken. We will endeavour to minimise noise impacts where possible by;

- Scheduling high impact works during the day shifts
- Directing noisy equipment away from businesses and residences
- Turning off equipment when not in use

Traffic and Pedestrian impacts

Launceston Street eastbound between Callam and Easty Streets will be temporarily closed for the duration of the works to both road cyclists and cars. A road detour will be in place to redirect travellers via Callam Street/Hindmarsh Drive. The footpaths along Launceston and Easty Street will remain open for pedestrians and access to businesses and premises will be maintained unless notified otherwise.

Southside markets and other nearby neighbours have been informed separately and access will be maintained for the markets scheduled on Sunday 1 August.

Refer to map below for extent of road closure.

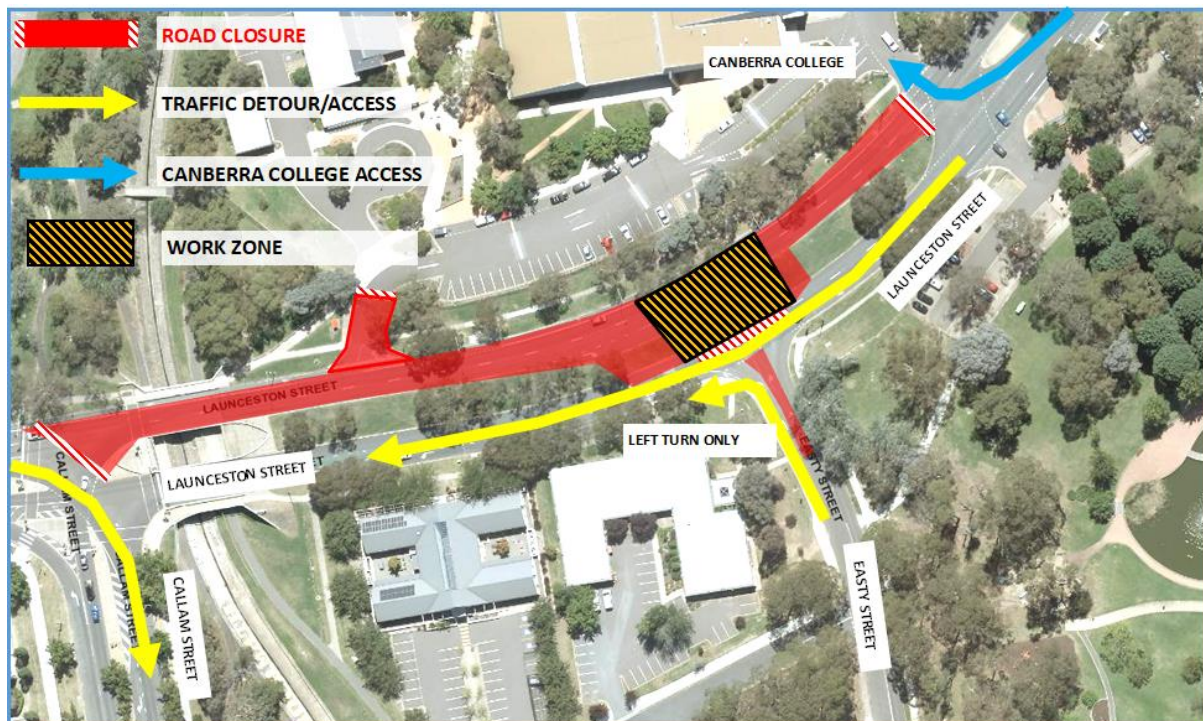


Figure 1 - Weekend Works Intersection of Launceston and Easty Street

Out of hours work

Due to the intersection shutdown being restricted to weekend only and to minimise traffic disruption, the work will require out of hours construction. This is to ensure excavation of stormwater across roads can be completed in the shortest possible timeframe, weather conditions and technical requirements permitting.

It is expected the stormwater works will be complete by 5:30am Monday 2 August 2021, however in the event of wet weather or unforeseen circumstances, activities will be **rescheduled** for the next available weekend. Updates will be available at <https://www.transport.act.gov.au/getting-around/network-upgrades/woden>

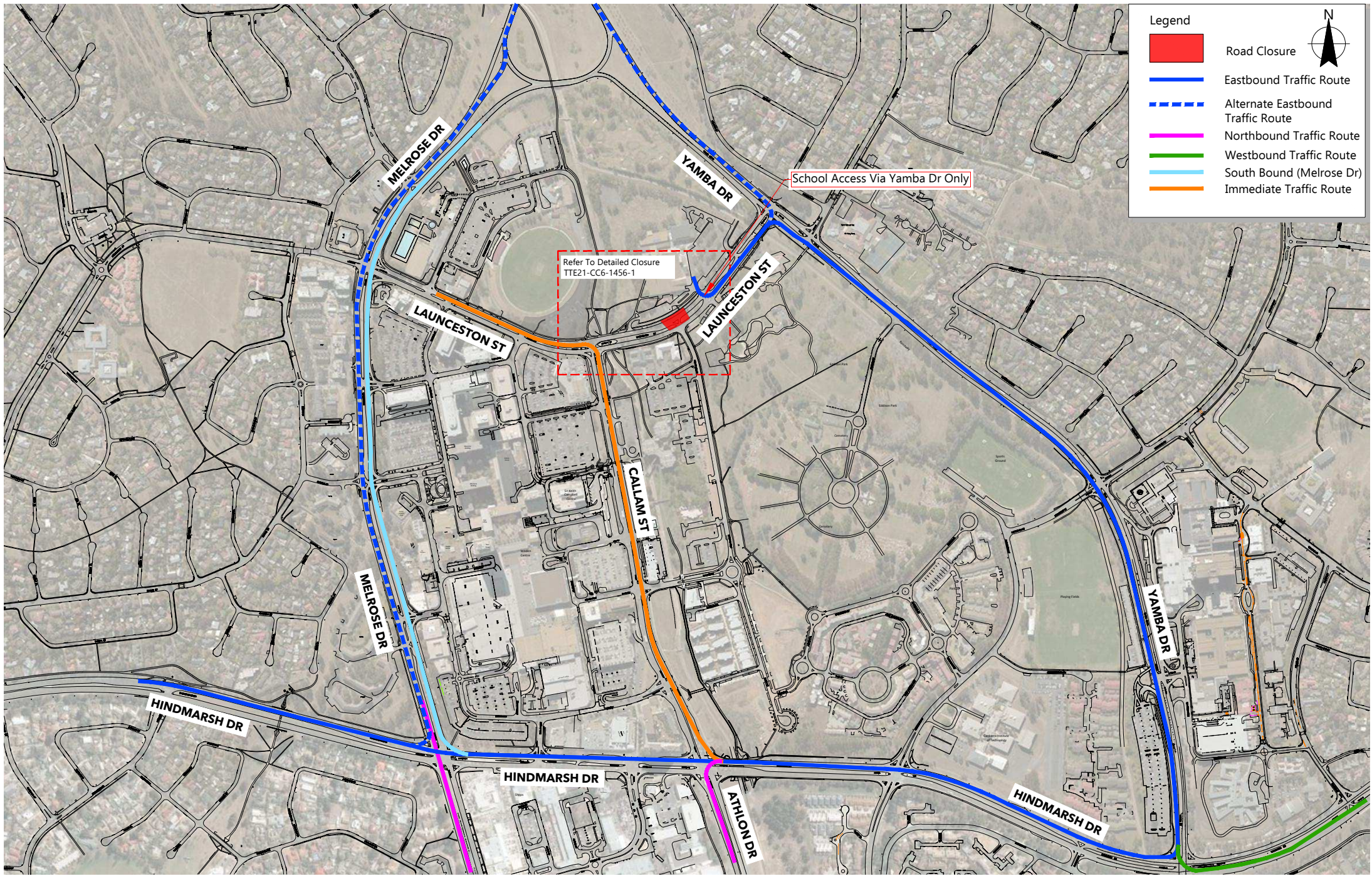


Figure 2 - Detour for Launceston and Easty Street intersection road closure

Easty Street temporary road closure

Easty Street road closure between Wilbow and Matilda Street

Monday 2 August 2021 – Saturday 1 October 2021

Commencing **Monday 2 August 2021**, Easty Street between Launceston and Wilbow will be temporarily closed to traffic for approximately 8 weeks. The temporary road closure is required to allow our work crews to safely complete road and active travel upgrades as well as construct a new bus layover. Access to properties will be maintained unless notified otherwise, details of car parking and business access is included in below map:

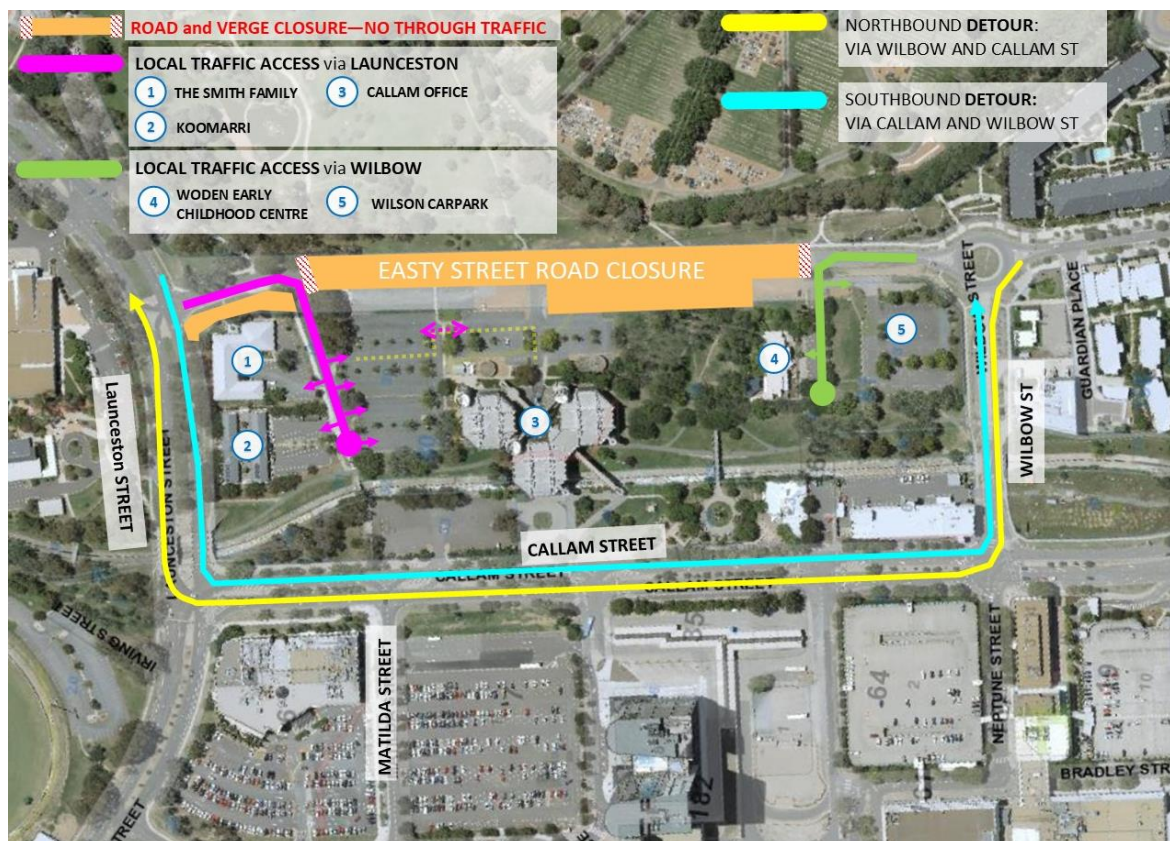


Figure 3 - Local Access, Easty Street temporary road closure

Traffic Management

Traffic management will be required to ensure the safety of the community and our workers during this time. Speed reductions, traffic control and work zones will be frequent around the road closure area. To assist with traffic congestion around the road closure, attached to this notice is preferred advanced detour routes for access to premises North and South of the road closure.

Parking Restrictions

The road and active travel improvements will impact existing parking capacity along Easty Street, including the removal of kerbside parking. There will be some temporary and some permanent removal of car parking spaces near the Callam Offices to allow for a new bus layover. Works will be staged to minimise carpark reductions ; however, we suggest parking at alternate locations to reduce traffic and congestion around the work area. More considered parking in the informal spaces at Callam Offices

would also allow provide increased capacity. Alternate parking and travel information is available at www.transport.act.gov.au/getting-around/network-upgrades/woden

Pedestrian impacts

The works will require footpath closures along Easty Street, detours will be established to ensure key connections to businesses, residents and Woden town centre are maintained.

Equipment used

In general, the work will require a range of construction equipment, from mini excavators to medium excavators, trucks, concrete pumps, graders, skid steers, cranes, loaders, asphalt pavers and rollers.

If you have any questions or would like to know more about the works, please dial 6130 0524 to contact a Site Representative from Canberra Contractors or email us at mail@canberracontractors.com.au.

We thank you for your patience and understanding while we undertake this important work. More project information is available at www.act.gov.au/citcampuswoden

Yours sincerely,

A handwritten signature in black ink, appearing to read 'D Hill', written in a cursive style.

Daniel Hill
Project Manager
Canberra Contractors
(02) 6242 8122

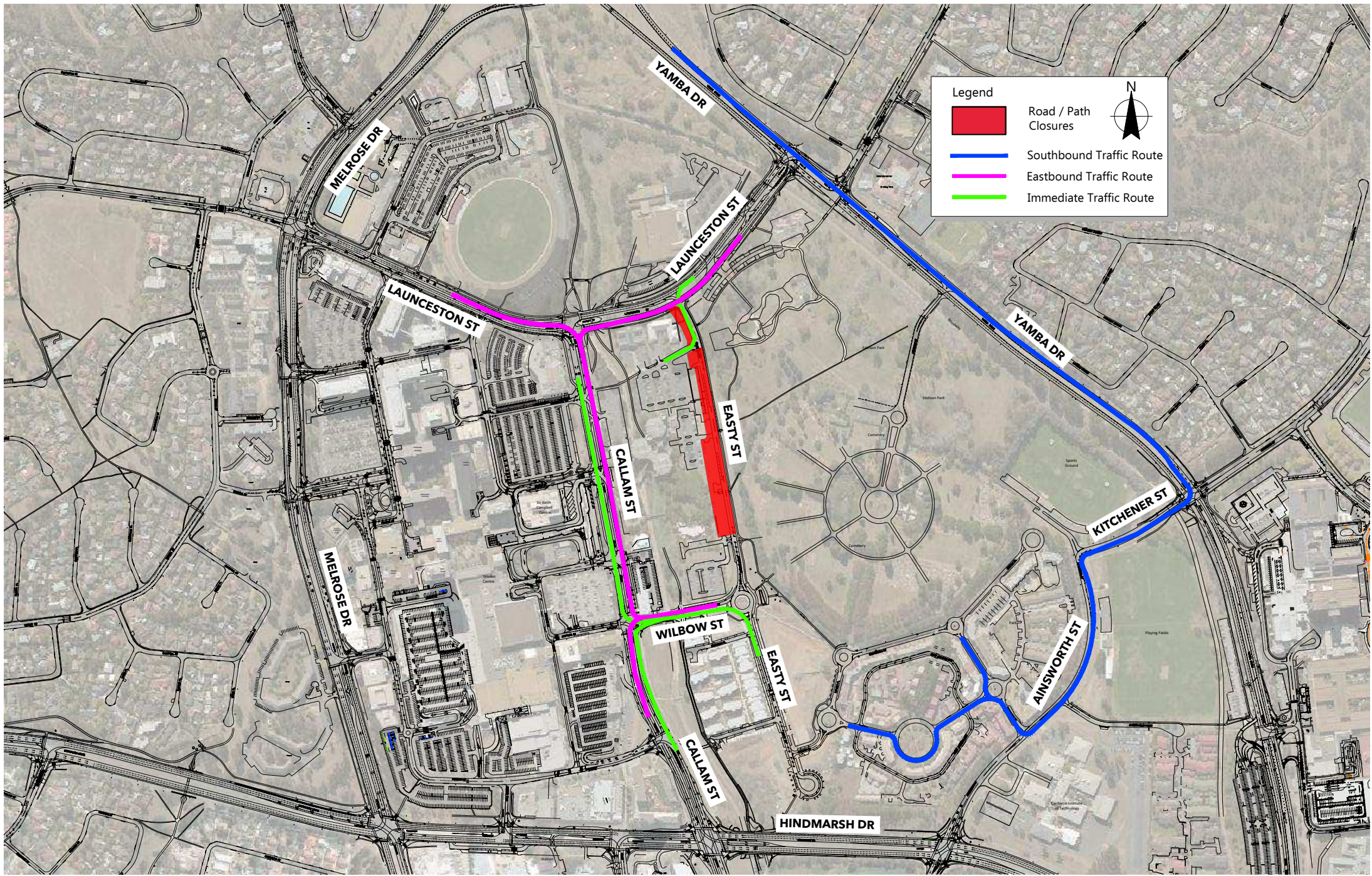


Figure 4 - Road detour for Easty Street road closure